

anko

Steam Mop User Manual



Model No.: JC-230

Rev Draft 2

READ AND SAVE THESE INSTRUCTIONS

1	Warnings	4
2	Safety Direction	4
3	Recommended Floor Surfaces	5
4	Transporting your Steam Mop	6
5	Components	6
6	Assembly	7
6.1	Adjustable Handle	8
7	Micro Fibre Pad	8
8	Operation	9
8.1	Using on carpets	10
9	User Maintenance	11
9.1	Cleaning the Micro Fibre Pad	11
9.2	Reduced Steam Flow	11
10	Completion and Storage	13
10.1	Cleaning the Steam Mop	14
11	Troubleshooting	15
12	Warranty Against Defect	16

1 Warnings

Before using this appliance, read and follow all warnings and instructions in this manual, even if you are familiar with this product.

This appliance is not intended for use by persons (including children) with reduced physical, sensory or mental capabilities, or lack of experience and knowledge unless they have been given supervision or instruction concerning the use of the appliance by a person responsible for their safety.

Children should be supervised to ensure that they do not play with the appliance.

If the supply cord is damaged, it must be replaced by the manufacturer, its service agent or similarly qualified persons to avoid a hazard.

The liquid or steam must not be directed towards equipment containing electrical components, such as power boards or the like.

DO NOT use in swimming pools, etc. containing water.

The appliance has to be unplugged after use and before cleaning and carrying out user maintenance on the appliance.

2 Safety Direction

Please read this instruction manual carefully before first use. It is advisable to keep this instruction manual for future reference.

DO NOT leave the appliance unattended when in use, hot or producing steam.

Take care that children cannot touch the appliance when the appliance is hot and or producing steam, and make sure they cannot pull the mains cord.

DO NOT direct the steam towards persons, animals or equipment containing electrical components, such as the interior of ovens.

To protect against the risk of electric shock, do not immerse the appliance, cord or plug in water or other liquids.

The filling aperture (Water Fill Cap) must not be opened during use.

Take care as burns can occur from touching hot parts, hot water or steam.

DO NOT use near sinks, baths or showers containing water or running water.

Disconnect the plug from the wall socket and let cool before changing the micro fibre cleaning pad.

This appliance must be earthed. The use of an Earth Leakage Safety Switch is highly recommended. If unsure, consult an electrician.

DO NOT use without the microfibre cleaning pad fitted.

DO NOT store or use the appliance near or in high temperature areas.

DO NOT run over the power cord with the Steam Mop.

DO NOT use the appliance if the power cord is damaged. Do not repair by yourself.

ONLY for domestic use. Industrial or commercial use invalidates the warranty.

To avoid scalding, **DO NOT** touch hot surfaces or the steam nozzle on the bottom during or just after use.

3 Recommended Floor Surfaces

This product can be used for cleaning floor surfaces such as sealed wooden floors, ceramic tiles, granite, and marble flooring, including some types of carpets and Vinyl.

It is strongly advised to always test a section of the flooring material in an out-of-sight area first to ensure the surface to be cleaned is not damaged by the steam. Always follow the manufacturer's cleaning instructions of the floor. If unsure, **DO NOT USE!**

NOTE: This steam mop should not be used on surfaces with soft or heat sensitive coatings like wax, enamels or oils, etc.

IMPORTANT:

DO NOT use on unsealed hardwood or unglazed ceramic surfaces.

Surfaces that are not properly sealed may be warped or damaged by exposure to heat and moisture.

Care should also be taken when steaming sealed hardwood floors, as prolonged exposure to steam in a single spot may cause damage and discolouration.

To avoid this, keep the Steam Mop in constant motion on these surfaces, and place it on an old towel or similar when finished.

Extremely rough textured floors may tear or damage the Microfibre Pad.

DO NOT use on windows, tables or other types of furniture or fixtures.

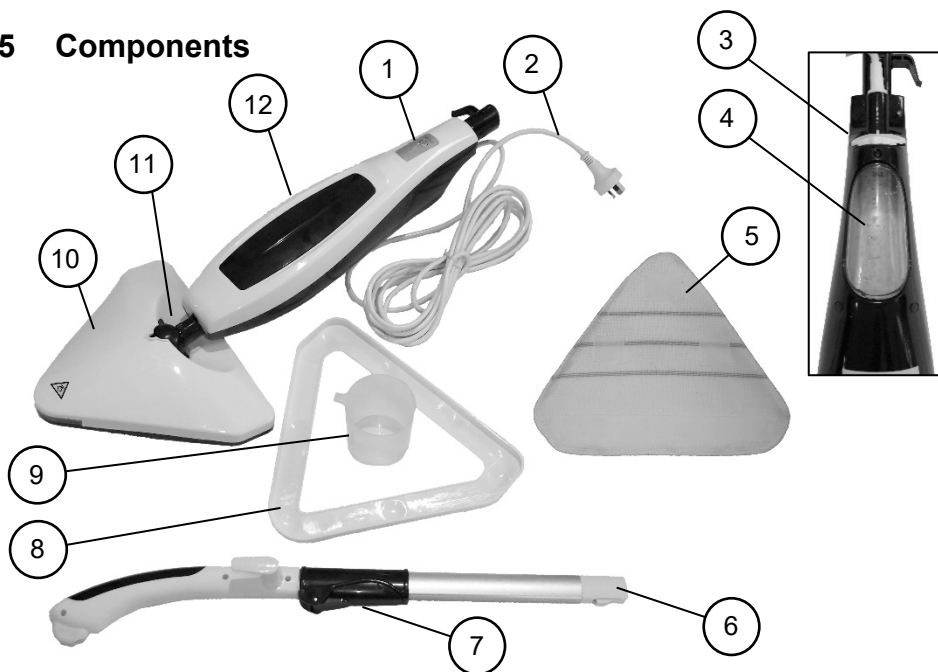
DO NOT add any other agents into the water tank, such as rust removers, odour counter reacting agents, alcohol, cleaners, solvents, detergents, etc. as this may cause serious injury to the user and may damage the appliance and floor surface.

4 Transporting your Steam Mop

To move your Steam Mop from room to room, unplug the unit and carry using the handle.

Never pull or carry the Steam Mop by its cord.

5 Components

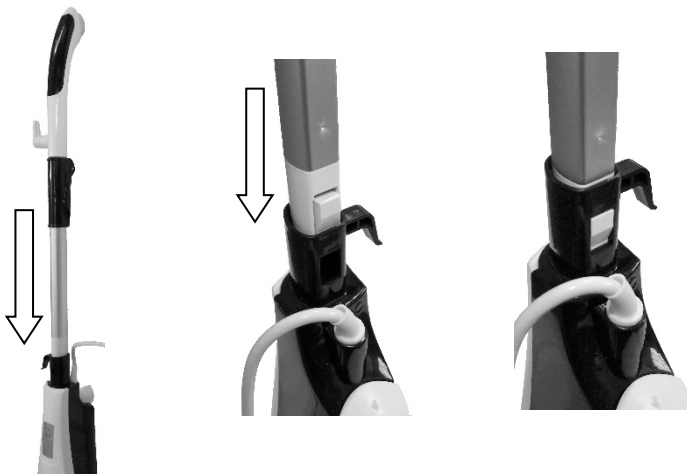


1	Indicator Light	7	Extension Lock
2	Power Cord and Plug	8	Carpet Slider
3	Water Filler Cap	9	Water Beaker
4	Water Tank	10	Steam Head
5	Micro Fibre Pad	11	Swivel Joint
6	Removable Handle	12	Main Body

6 Assembly

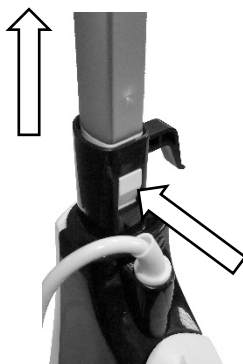
The handle needs to be assembled to the body when you receive your steam mop.

- First, remove all the components from the packaging.
- Take the Handle and fit it into the hole located in the top of the Steam Mop body and push down until it clips in place.



The Handle can be removed if need be for ease of storage.

- To remove, press the clip in and then pull the handle up and out.



6.1 Adjustable Handle

The Handle length can be adjusted to your desired length for comfort.

- To adjust, pull down the lever.

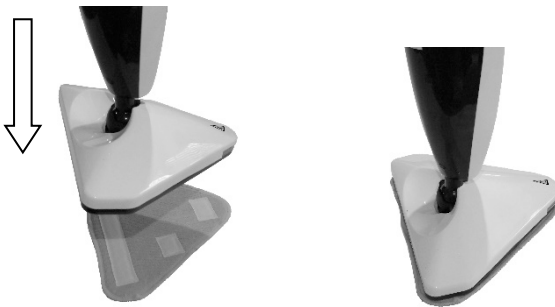


- Slide the handle out to your desired length and then close the lever to lock it in place.



7 Micro Fibre Pad

- To fit the Micro Fibre Pad, place the Micro Fibre Pad on the floor with the “hook & loop” tabs facing up.
- Lift the steam mop up and position centrally over the Micro Fibre Pad and then lower down applying a small amount of downward pressure.



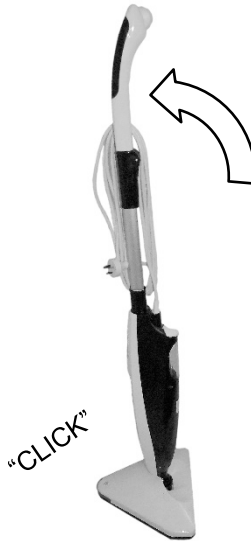
- To remove the Micro Fibre Pad, ensure the steam mop is unplugged, empty of water and cool, then grasp the edge of the micro pad and peel it off.

8 Operation

Note: Ensure the Micro Fibre Pad is fitted before use. To prevent damage to the floor never use the steam mop without the microfibre pad.

- After fitting the Micro Fibre Pad, stand the steam mop upright in its “Park” position.

To latch the handle in the upright “Park” position, swing the handle up and push forward until the handle “clicks” and latches in the upright position.



- Open the water tank cap by pulling up on the tab.



- Fill the water tank to the “Max” mark (on the window) then refit the cap securely.

- Ensuring the power cord is fully unwound, insert the plug into the power point and switch it on. The Indicator light on the front face of the Steam Cleaner Body will illuminate and Flash.
- Allow 15 – 30 seconds (depending on the initial water temperature) for the element to heat up.

NOTE: Read the section on “Recommended Floor Surfaces” before use.

- Whilst in the upright “Park” position, the steam will not be generated.

To start the steam, pull the handle backward to unlatch it from its parking position, ensuring the floor head remains flat on the floor, and then start to push and pull the Steam Mop over the floor as if you are vacuuming the floor.

Note: Tilting the handle back activates the water pump which in turn creates the steam generation.

Note: A small amount of water may initially be ejected from the base when heating starts. This is normal.

- If you need to stop cleaning the floor, i.e., you need to move an object, or the phone rings and steam is still being ejected from the base, lift the handle to the upright position until it locks inside the floor head (Park Position”. This stops the water pump and stops the steam.

Note: Always switch off and unplug the appliance when refilling the water tank, or when not in use.

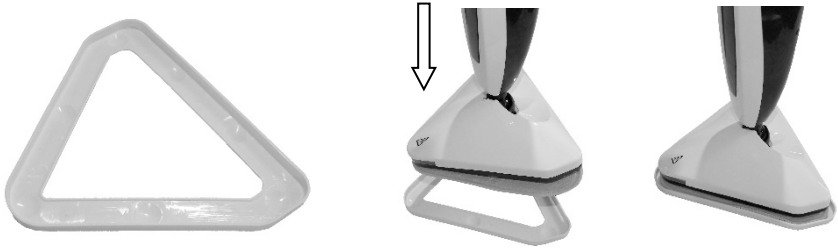
IMPORTANT! Never allow the steam mop to rest in one spot while the steam is on as this may damage the floor surface.

8.1 Using on carpets

This appliance is supplied with a Carpet Slider which allows you to use the Steam Mop on carpets.

- To use this accessory, place the Carpet Slider on the carpet and then place the Steam Mop Head (with Micro Pad fitted first) into the frame.

- Push and pull the Steam Mop over the carpet as if you are vacuuming the floor.



- To remove the Carpet Slider, just lift the Steam Mop up and out of the Slider.
- Take care when touching the Carpet Slider as it may be hot after use.

9 User Maintenance

WARNING: The appliance must be switched off and the plug must be removed from the power point before any maintenance, cleaning or replacing the Micro Fibre Pad.

NOTE: To maximise the performance of your steam mop, you should clean the microfiber Pad regularly.

9.1 Cleaning the Micro Fibre Pad

The Micro Fibre Pad must be cleaned regularly for the best cleaning performance.

Simply wash the Micro Fibre Pad in warm mild soapy water, rinse in clean fresh cold water and let dry.

The Micro Fibre Pad may be washed in a washing machine on a Normal Wash.

DO NOT scrub the Micro Fibre Pad or Tumble Dry.

9.2 Reduced Steam Flow

Should there be a build-up of scale etc. the flow of steam will be restricted and there may be small particles of scale left of the floor surface.

The scale needs to be cleaned away as follows:

Disconnect from the power supply and wait for the appliance to fully cool down.

Cleaning solution:

- Prepare a solution of 1/3 white vinegar and 2/3 tap water and add to the water tank.
- Position and secure the mop over a sink. Ensure steam released from the mop head is aimed into the sink and can't do any harm to surrounding surfaces, objects, pets or people, etc.
- Plug the unit in and wait for approx. 30 seconds for the unit to heat and then tilt the handle back, so that it disengages from the floor head lock position, to start the steam.
- Let the mop produce steam until the vinegar/water solution is used up.
- Repeat the above procedure as many times as necessary until a normal steam flow rate is achieved.
- After cleaning, the water tank and pipes etc. need flushing out with clean water. To do this, fill the water tank with fresh clean water and wait for approx. 30 seconds for the unit to heat and then tilt the handle back, so that it disengages from the floor head lock position, to start the steam. Allow all the water to be used up to ensure a good flush.

Note: After each limescale removal we recommend performing a test clean on a suitable isolated area to ensure that there is no debris left in the system.

10 Completion and Storage

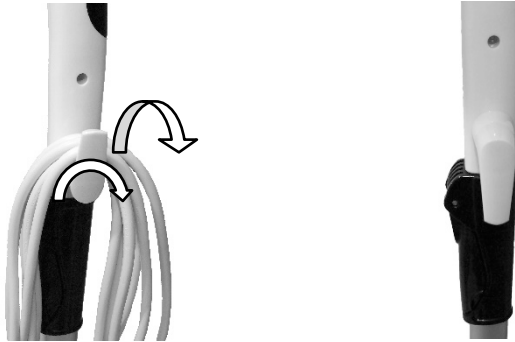
- After you finish mopping, latch the handle in the upright “Park” position, by swinging the handle up and pushing forward until the handle “clicks” and latches in the upright position.



- After you have finished using the appliance, switch off and unplug from the power point and allow the appliance to fully cool down.
- When cool, empty the water tank.
- Remove the micro fibre pad and clean it. (refer to User Maintenance section)
- Wind the power cord onto the side hooks as shown.



- To quickly release the power cord, the top hook can be rotated to allow the power cord to slip off as shown:



10.1 Cleaning the Steam Mop

Do not clean the Steam Mop or components with petrol or any other flammable liquids, solvents, etc.

Use only a moist cloth and mild detergent for cleaning the Steam Mop.

Clean only the outside of the Steam Mop.

After cleaning, wipe off the moisture with a dry cloth.

Do Not place in water to clean.

11 Troubleshooting

<p>No Steam.</p>	<p>Power Not Switched On.</p> <p>The water has not heated up</p> <p>The handle has not been tilted back far enough.</p> <p>No water in the tank.</p> <p>Blocked Steam Hole</p>	<p>Switch On at power point.</p> <p>Allow approximately 20 – 30 seconds for the water to heat.</p> <p>Tilt the handle back ensuring the floor head is still flat on the floor.</p> <p>Add water to the water tank.</p> <p>Clean the steam hole as described under “User Maintenance”</p>
<p>A small amount of water is ejected instead of steam</p>	<p>This is normal when the element is heating up.</p>	<p>This is normal</p>
<p>The indicator Light will not come on.</p>	<p>Power Not Switched On.</p>	<p>Switch On at power point.</p>
<p>The indicator light flashes.</p>	<p>Water is heating.</p>	<p>Allow water to heat for approximately 20 – 30 sends before use.</p>

12 Warranty Against Defect

12 Month Warranty

Thank you for your purchase from Kmart.

Kmart Australia Ltd warrants your new product to be free from defects in materials and workmanship for the period stated above, from the date of purchase, provided that the product is used in accordance with accompanying recommendations or instructions where provided. This warranty is in addition to your rights under the Australian Consumer Law.

Kmart will provide you with your choice of a refund, repair or exchange (where possible) for this product if it becomes defective within the warranty period. Kmart will bear the reasonable expense of claiming the warranty. This warranty will no longer apply where the defect is a result of alteration, accident, misuse, abuse or neglect.

Please retain your receipt as proof of purchase and contact our Customer Service Centre 1800 124 125 (Australia) or 0800 945 995 (New Zealand) or alternatively, via Customer Help at Kmart.com.au for any difficulties with your product. Warranty claims and claims for expenses incurred in returning this product can be addressed to our Customer Service Centre at 690 Springvale Rd, Mulgrave Vic 3170.

Our goods come with guarantees that cannot be excluded under the Australian Consumer Law. You are entitled to a replacement or refund for a major failure and compensation for any other reasonably foreseeable loss or damage. You are also entitled to have the goods repaired or replaced if the goods fail to be of acceptable quality and the failure does not amount to a major failure.

For New Zealand customers, this warranty is in addition to statutory rights observed under New Zealand legislation.

IMPORTANT!

For all technical queries or difficulties in operating the product and for spare parts, contact H.E. Group customer service 1300 105 888 (Australia) and 09 8870 447 (New Zealand).