

IMPORTANT SAFEGUARDS

FOR HOUSEHOLD USE ONLY

This appliance should only be used for domestic cleaning, and must only be used indoors, as described in this user guide.

- Always switch off and remove the charger from the socket before cleaning the appliance or during any maintenance.
- This appliance is not intended for use by persons (including children) with reduced physical, sensory or mental capabilities, or lack of experience and knowledge, unless they have been given supervision or instructions concerning use of the appliance by a person responsible for their safety.
- Children should be supervised to ensure that they do not play with the appliance.
- If the power cord is damaged, it must be replaced by a qualified electrician in order to avoid hazard or the appliance must be disposed.
- Use only the original charger supplied with the appliance.
- Check that your supply voltage is the same as that rated on the charger.
- When charging the appliance, the power switch must be off.
- Never charge the batteries in temperatures above 37°C or below 0°C.
- If it is normal for the charger to become warm to the touch when charging.
- Use only attachments provided.
- Static electricity, some carpets can cause a small build up of static electricity. Any static discharge is not hazardous to health.
- Do not use your appliance out of doors or on any wet surface.
- Do not spray with or pick up flammable liquids, cleaning fluids, aerosols or their vapours.
- Do not continue to use your appliance or charger if it appears faulty.
- Do not leave the appliance unattended when in use.
- Never use the appliance without the filters in place!
- Check the filters are inserted correctly!
- Do empty the Dust Cup regularly for optimal operation of the vacuum.
- Do not replace the batteries with non-rechargeable batteries.
- The vacuum must only be used with the battery charger provided with the product: WJA-Y081750450W.

WARNING: Do not recharge non-rechargeable batteries.

WARNING: Before charging the product, please make sure your hands are dry.

WARNING: Please use the charger supplied with the appliance. Other chargers may cause electrical failure and/or fire.

2

anko

Vacuum Cleaner
User Manual

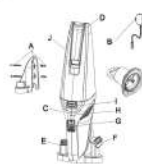


Model no.: V8273-L-9

PLEASE READ AND SAVE THESE
INSTRUCTIONS FOR FUTURE REFERENCE.

1

PARTS



- A Wall mount pack
- B Charger
- C Handheld Vacuum
- D Flip-up crevice tool
- E Brush
- F Rubber wiper
- G On/Off switch
- H Charging Power Indicator
- I Dust cup release button
- J Dust cup
- K Cloth filter

CHARGING THE VACUUM

Plug the charger into the wall outlet, ensure the voltage of the electricity supply is same as that indicated on the rating label of battery charger. When charging is completed, pull out the battery charger from the socket.

When used for the first time, charge the vacuum cleaner for 5hrs. After first time use the normal charging time is 5hrs.

The indicator light will flash during charging, it turns to GREEN steady light when fully charged. When the battery level is high, indicator light will remain GREEN, it turns RED when battery level is low. When the battery power is low the indicator light will flash for approximately 20 seconds before the vacuum cleaner turn off automatically.

THE PRODUCT NEEDS TO BE CHARGED PERIODICALLY (2 or 3 TIMES A MONTH) TO ENSURE OPTIMUM BATTERY LIFE, EVEN IF YOU HAVE NO INTENTION OF USING IT FOR A LONG TIME.

3

TROUBLE SHOOTING

Problem	Possible causes	Solutions
The vacuum steamer does not switch ON.	1. The power switch on this unit is not switched ON. 2. Bad contact to main power socket charger jack	1. Try sliding the power switch button to ON again. 2. Check connection and see if battery is fully charged
Suction not strong	1. Brush head not correctly fixed. 2. The dust cup is full. 3. The filters are blocked.	1. Check brush head not connected to main unit. 2. Empty dust cup 3. Check for any blockage and wash filter.

SPECIFICATION

Model number	V8273-L-9
Battery	14.8V 1300mAh Li-ion (3.7V x 400mAh)
Working time	15-20min
Charging time	5-6hr
Battery charge	WJA-Y081750020W Input: 100-240V 50-60Hz 30W Output: 17.5V 4.0A 700mA

4

12 Month Warranty

Thank you for your purchase.

Your new product is warranted to be free from defects in materials and workmanship for the period stated above, from the date of purchase, provided that the product is used in accordance with accompanying recommendations or instructions where provided. This warranty is in addition to your rights under the Australian Consumer Law.

For New Zealand customers, this warranty is in addition to statutory rights observed under New Zealand legislation.

We will provide you with your choice of a refund, repair (where possible) or exchange (availability dependent) for this product if it becomes defective within the warranty period. The business will bear the reasonable expense of claiming the warranty.

This warranty will no longer apply where the defect is a result of alteration, accident, misuse, abuse or neglect.

Please retain your receipt as proof of purchase and contact our Customer Service Centre as listed below, for the entity you purchased this product from, for any difficulties with your product. Warranty claims and claims for expense incurred in returning this product can be addressed to the respective Customer Service Centre.

Our goods come with guarantees that cannot be excluded under the Australian Consumer Law. You are entitled to a replacement or refund for a major failure and compensation for any other reasonably foreseeable loss or damage. You are also entitled to have the goods repaired or replaced if the goods fail to be of acceptable quality and the failure does not amount to a major failure.

Contact for Kmart purchases

Kmart Australia Ltd.
C/- Customer Service Centre
690 Springvale Road,
Malvern Vic 3170
Customer Service: 1800 124 125
(Australia) or 0800 945 995
(New Zealand) or via
Customer Help at kmart.com.au

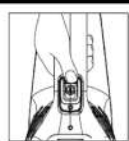
Contact for Target purchases

Target Australia Pty Ltd
C/- Customer Service Centre
2 Kendall Street, Williams Landing,
Vic, 3027
Customer Service: 1300 753 567
or via Customer Help at
target.com.au/help/contact-us

5

USING THE VACUUM

Turn on the vacuum cleaner by sliding the On/Off switch forward.
(i.e. "O" = Off, "I" = On)
To stop, slide the switch back.
Recharge the vacuum after use.



MAINTENANCE

Emptying the dust cup
Press the dust cup release button and pull out the dust cup



Pull out the filter.



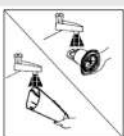
6

Empty the dust cup.



Cleaning the filter

Wash the filter and dust cup under running water.



IMPORTANT! DO NOT wash the main electric motor unit with handle in water or other liquid.

Allow to dry for 24 hours.

Make sure filter and dust cup are dried thoroughly before fitting them back to the unit.



IMPORTANT! Filters must be cleaned regularly for best suction performance and to prevent over-heating and damaging the vacuum cleaner.

7

STORAGE

Wall Mount

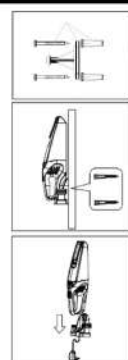
There is a wall mount accessory supplied with screws and wall plugs.
To install the wall mount bracket, position it on the wall at a suitable height.

Mark the two screw holes through onto the wall. Using a suitable drill (wood drill bit for timber wall, or masonry drill bit for brick / concrete walls, drill three holes 20mm and 35-40mm deep.
Insert the plastic wall plugs into each hole and gently hammer in until they are flush with the wall, place the hanging mount over the holes then insert the screws and tighten up. Do Not Over-tighten.

Insert the DC jack through the bottom hole of wall mount bracket, twist it 90deg to hold it at base



Seat the handheld vacuum on the wall mount bracket, the vacuum can start charging in this position.
IMPORTANT! In course of the above installation process consult a professional person to have it installed



8

ASSEMBLY

IMPORTANT! The cloth filter must always be used when operating the handheld vacuum.

A crevice tool is built into the nozzle and can be flip-down for use.



A rubber wiper was provided for wet suction.
Push the wiper to nozzle, ensuring it is tightly fixed.



A brush was provided for general cleaning.

Flip-down the crevice tool, then push the brush attachment to crevice tool. Ensure it is tightly fixed.



9