

# I003028 7W LED Genio Wi-Fi Smart Tube Light

TO ENSURE THE SAFE AND SATISFACTORY OPERATION OF THIS SET PLEASE READ THESE INSTRUCTIONS CAREFULLY AND RETAIN FOR FUTURE REFERENCE

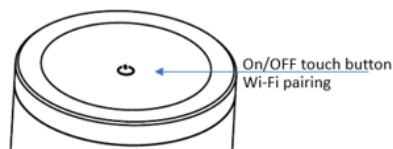
## SAFETY INFORMATION:

- Remove set from packaging before connecting to power supply.
- Use only with adaptor supplied
- Ensure that the cable is completely uncoiled whilst set is in use.
- LED bulbs is non replaceable.


## Wi-Fi pairing information (BK, EZ and AP method)

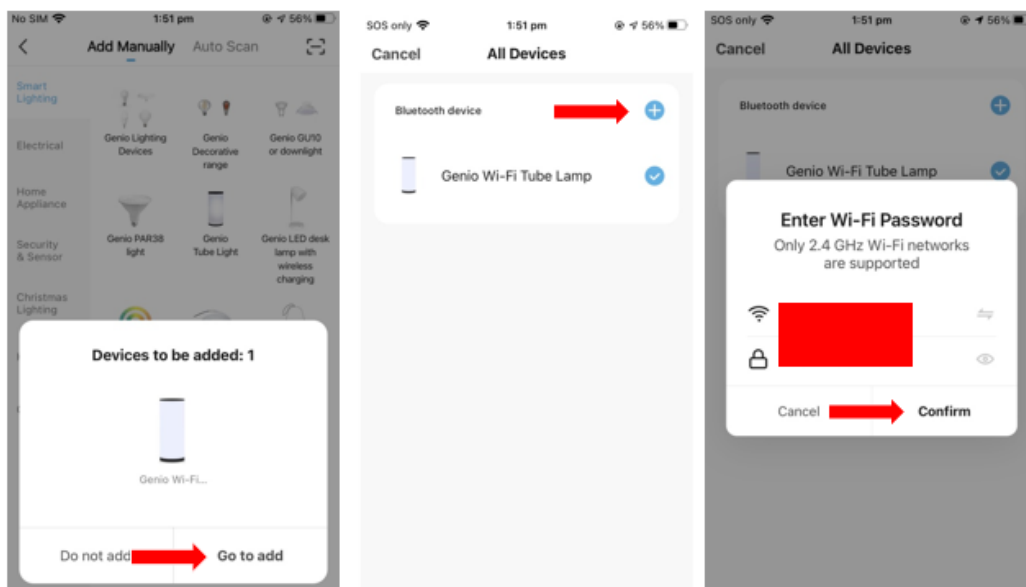
1. Download “Mirabella Genio” App from the APP store or Google Play , and register an account
2. Connect your mobile phone to 2.4Ghz Wi-Fi network (Tube light doesn’t support 5Ghz Wi-Fi)
3. Connect the adaptor to the tube light and switch the power on Tube light and wait for the Tube light start to blink rapidly (1 blink per second)

If the tube light doesn’t start to blink when first powered on, then power off, then power on, Press and hold the ON/OFF button on the top of tube light, and wait for it starts to blinking,



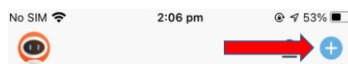
## Bluetooth BK method

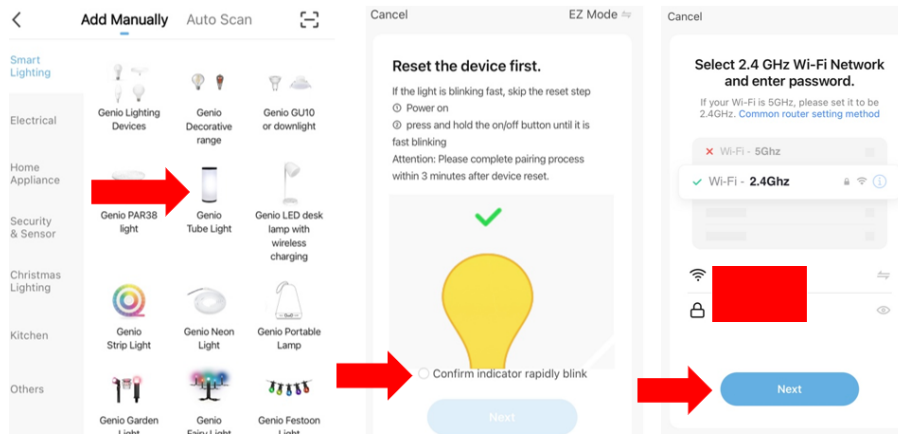
Our latest genio smart Wi-Fi lighting range have Bluetooth pairing assistant function, to make the pairing even easier than before, to take advantage of this function, please turn the Bluetooth on your phone, open Mirabella genio APP, tap on  , APP would automatically discover the Tube lamp, and follow the below instructions to pair it



## Fasting blinking EZ method (when the bluetooth on the phone is not turned on)

1. open Mirabella genio APP, tap on  ,
2. select Genio Tube light under the smart lighting, then follow the in-app prompts to connect tube light to your APP

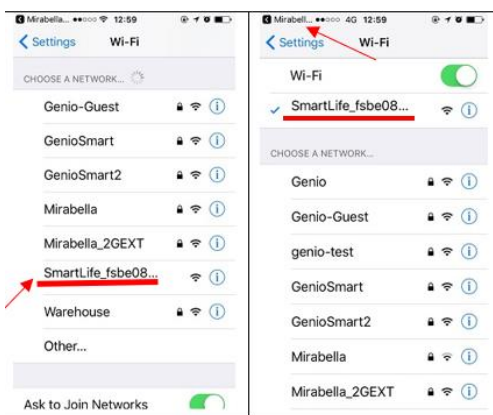
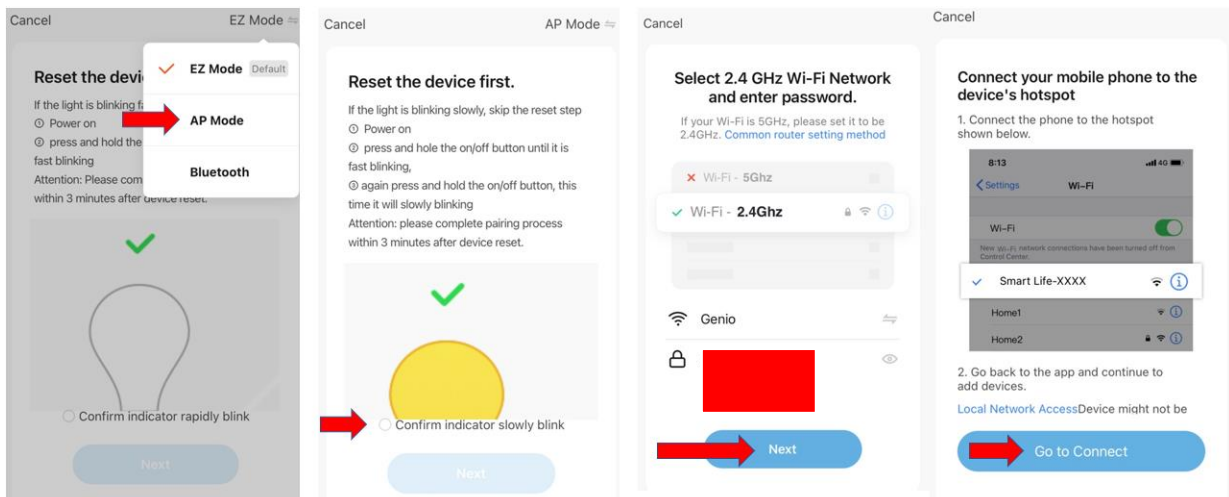




### Slow blinking AP method (1 blinking per 2 second)

If this fasting blinking method doesn't work for you, please try the slow blinking AP method, while the light is fast blinking, press and hold the ON/OFF again and wait for the light to slowly blinking

1. Open the APP this time on the **reset the device first** screen tap on **EZ mode** in the Top right hand corner just below the battery image , select **AP Mode**
2. Now **Confirm indicator slowly blinking** ,it **Next**, then **Go to connect** and connect to Wi-Fi named **SmartLife\_XXXX**



After connected to SmartLife\_XXXX, **return back** to Mirabella Genio, APP will commence the 0-100% countdown process. If you cannot see the SmartLife-xxxx on the list, it means the tube light is not slowly blinking, please reset it and try again.

Please visit <https://www.mirabellagenio.com.au/setting-up/> and <https://www.mirabellagenio.com.au/faqs/> for more help

Without the need of Genio APP, you can also quickly double tap on the ON/OFF button, and light will cycle from white->color quick flash->color slow fade->white

**Should the tube light or adaptor get damaged, do not attempt to repair.**

**TO BE REPAIRED BY AN AUTHORIZED PERSON ONLY**

THIS IS AN AUSTRALIAN STANDARDS REQUIREMENT IN THE INTEREST OF YOUR SAFETY