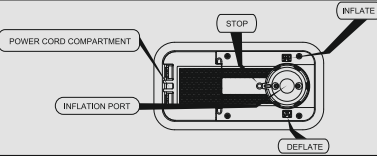


OPERATING INSTRUCTIONS

Built-in Sidewinder™ AC Electric Pump
Model number P3141



- 220-240V~ 50Hz 95 W
- DUAL FUNCTION: INFLATION & DEFLATION
- EXCLUSIVELY DESIGNED FOR AIR BEDS
- Max. Load: 300kg.

● **NOTICE:** READ CAREFULLY BEFORE OPERATING AND SAVE THESE INSTRUCTIONS.

CAUTION:

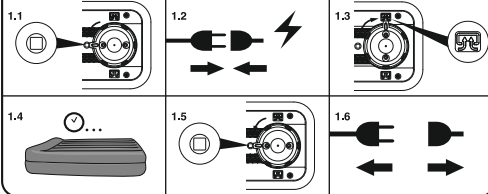
TO AVOID THE RISK OF ELECTRIC SHOCK, DO NOT EXPOSE TO WATER OR RAIN, FOR INDOOR USE ONLY.

WARNING:

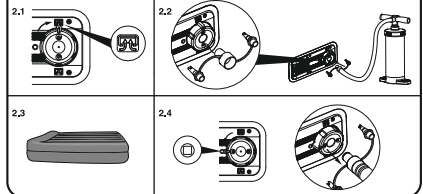
1. Unplug or disconnect the appliance from the power supply before servicing.
2. If the supply cord is damaged, it must be replaced by the manufacturer, its service agent or similarly qualified persons in order to avoid a hazard.
3. Motor for short time operation only. Inflate only for 5 minutes and deflate only for 5 minutes. Make sure motor's run time at a time not exceeds 5 minutes.
4. Children are strictly prohibited from operating pump.
5. The air vent on the cover should be kept away from debris during use.
6. Product must be stored in a dry location.
7. After use, airbeds may require additional air to increase firmness. Refill air for the proper firmness in necessary.
8. This product is not intended for use by persons (including children) with reduced physical, sensory or mental capabilities, or lack of experience and knowledge, unless they have been given supervision or instruction concerning use of the product by a person responsible for their safety. Children should be supervised to ensure that they do not play with this product.

NOTE: This product is not intended for commercial use.

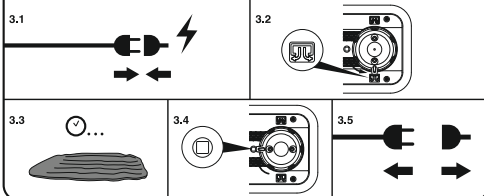
INFLATION



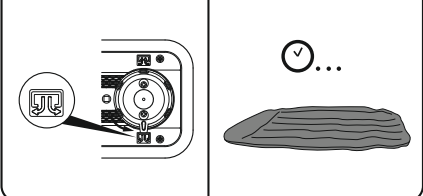
INFLATE WITH HAND PUMP (not included)



DEFLATION



MANUAL-DEFLATION



CLEANING & STORAGE:

1. If product gets dirty, use a clean damp cloth and wipe gently on the flocked and PVC surface. Do not use harsh detergents to clean. Fold and store after product is dried.
2. Before storing the product, release all the air. Store in a cool and dry place.
3. Do not place sharp or heavy objects near or on top of the mattress. Doing so will cause damage and tears.
4. If product is damaged, please use the provided repair patch.

AUSTRALIA

Tel: 61 2 9037 1388

Fax: 61 2 9737 9423

E-mail: service@bestwaycorp.com.au

Bestway Global Holding Inc.

No.3065 Cao An Road, Shanghai, 201812, China.

Tel: 86 21 6913 5588

Fax: 86 21 5913 8383

E-mail: info@bestwaycorp.com

www.bestwaycorp.com