

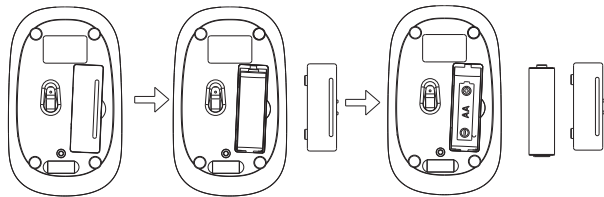
Installing the Batteries

The RF2.4GHz Optical mouse use one AA alkaline batteries.

The RF2.4GHz Optical keyboard use one AAA alkaline batteries.

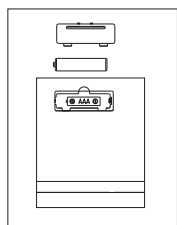
Installing Batteries in the Mouse

- Step 1. Open the battery compartment
- Step 2. Insert the batteries as shown inside the battery compartment
- Step 3. Replace the cover



Install the batteries in the keyboard

- Step1: Remove the battery compartment cover on the bottom of the keyboard by squeezing the cover in from the tab to release it
- Step2: Insert the batteries as shown inside the battery compartment
- Step3: Replace the cover

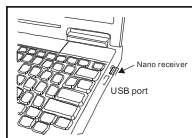


Connecting the Receiver

Take out the receiver from the bottom of the mouse, the receiver is inserted to USB port immediate, or by a extra USB cable.



USB Port



Connect the USB plug to USB port of your computer

Multimedia Hotkeys functions:

FN+ESC=Media Player	FN+F7=Web home
FN+F1=Play/Pause	FN+F8=Search
FN+F2=Previous Track	FN+F9=My Favorite
FN+F3=Next Track	FN+F10=Email
FN+F4=Volume Up	FN+F11=Key Lock
FN+F5=Volume Down	FN+F12=My computer
FN+F6=Mute	

Note: Some hot keys can not support Mac OS system

Obtain the receiver on the mouse

- 1.If you want to use the mouse,pls take out the receiver (shown in picture 1) and connect it to computer;
- 2.If you want to stop using the mouse, pls store the receiver onto the mouse (shown in picture 2);



1 Take out the receiver

2 Store the receiver

Restoring factory default settings

Mouse:

When the enduser finds the wireless mouse doesn't work, please check:

1. Whether the battery is used out, if yes, please replace with new battery;
2. If the led on mouse bottom is off, please do the following steps to recovery the default setting (automatic pairing):

Step one: unplug and plug again the nano receiver onto an available USB port of computer,

Step two: make the wireless mouse close to the nano receiver (within 10 cm), take out the battery and install the battery again inside the Battery compartment, if we find the Led on the mouse bottom on, we can start using the wireless mouse again.

Power-Save function:

1. Without using the mouse for 1 minute, the mouse will go into sleep mode level1. You can move it to wake up the mouse. The Red LED is still on.
2. Without using the mouse for 1-8 minutes, the mouse will go into sleep mode level 2. You can move it to wake up the mouse. The Red LED keep flashing.
3. Without using the mouse for more than 8 minutes, the mouse will go into deep sleep mode. The LED turn off automatically.

State of standby and wake up the mouse

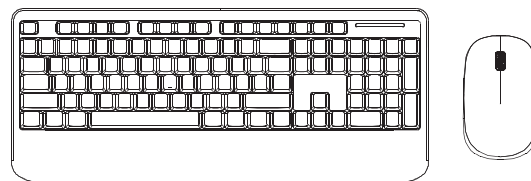
Without any clicks or scroll movement for 8 minutes, the mouse will go into standby mode. Click any button or scroll the wheel to wake up the mouse.

Under this economize mode, the optical Red LED will turn off automatically and the mouse won't respond by moving it.

K :43-026-555 | T: 68-736-422
Model No.: 43026555

Instruction Manual

Wireless slim keyboard and mouse combo



CAUTION: To use this device properly, please read the user's guide before installation.