

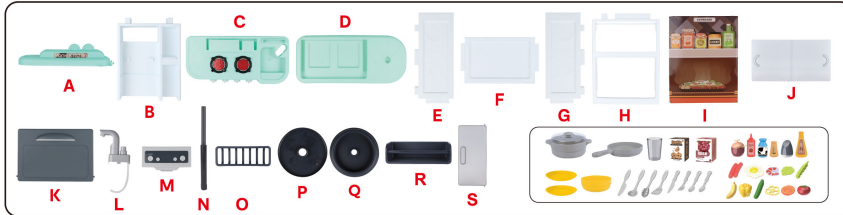
正面

背面

Assembly Instructions

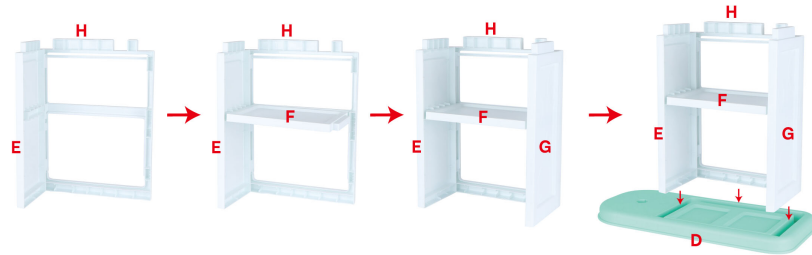
3+ years

1. Component List



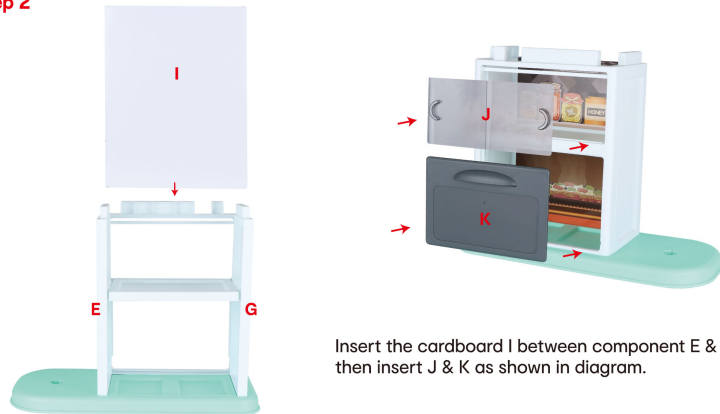
2. Assembly Instructions

Step 1



Assemble main body as shown in diagram. Make sure component E & H & G are inserted to the right position as image shown.

Step 2



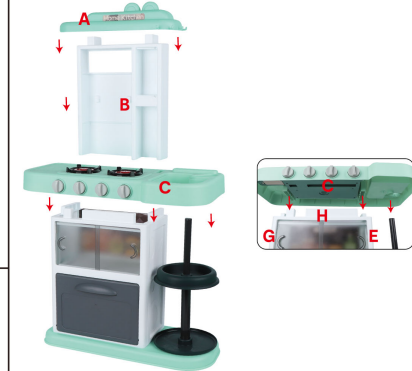
Insert the cardboard I between component E & G, then insert J & K as shown in diagram.

Step 3



Assemble N & P & Q as shown in diagram, then insert component N into component D as shown in diagram.

Step 4



Assemble component E & H & G & N to component C, make sure every component was inserted to the right position. Then assemble component A & B and insert to component C as shown in diagram.

Step 5



Assemble component S to component R, then insert component M & Q & R to component B as shown in diagram.

Step 6



Assemble component L to the right position, make sure the water pipe inserts to the bottom of sink as shown in diagram.

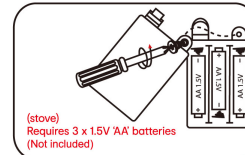
Step 7



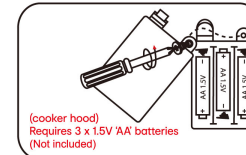
The assembly is completed as shown in diagram.

Cautions

Keycode: 43160310



(stove)
Requires 3 x 1.5V AA batteries
(Not included)



(cooker hood)
Requires 3 x 1.5V AA batteries
(Not included)

WARNING: DISPOSE OF USED BATTERIES IMMEDIATELY. KEEP NEW AND USED BATTERIES AWAY FROM CHILDREN IF YOU THINK BATTERIES MIGHT HAVE BEEN SWALLOWED OR PLACED INSIDE ANY PART OF THE BODY, SEEK IMMEDIATE MEDICAL ATTENTION.

WARNING: BATTERIES ARE TO BE INSERTED WITH THE CORRECT POLARITY (+ AND -). DO NOT MIX DIFFERENT TYPES OF BATTERIES OR NEW AND USED BATTERIES. NON-RECHARGEABLE BATTERIES ARE NOT TO BE RECHARGED. RECHARGEABLE BATTERIES ARE ONLY TO BE CHARGED UNDER ADULT SUPERVISION. RECHARGEABLE BATTERIES ARE TO BE REMOVED FROM THE TOY BEFORE BEING CHARGED. THE SUPPLY TERMINALS ARE NOT TO BE SHORT-CIRCUITED. REMOVE BATTERIES FROM THE TOY WHEN NOT IN USE FOR EXTENDED TIME OR WHEN BATTERIES BECOME EXHAUSTED. BATTERY INSTALLATION BY AN ADULT IS REQUIRED. DISPOSE OF BATTERIES RESPONSIBLY. DO NOT DISPOSE OF IN FIRE.