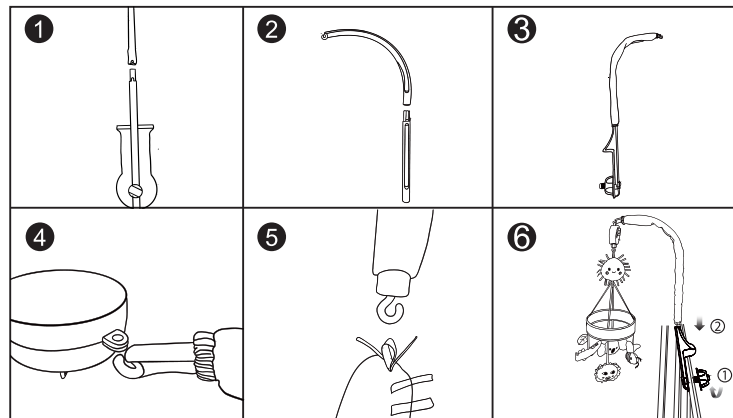


Size: 148(H) x 105(W)mm V2

anko

## PLUSH SAFARI MOBILE

0+  
months



This sheet contains important information.  
Please keep all information for future reference.

### Adult assembly required

Warning! To ensure your child's safety, this product must be assembled by an adult.

### Warning!

Possible chance of injury due to entanglement. Keep mobile out of baby's reach. Remove mobile from crib when baby can sit up unaided or when baby begins to push up on hands and knees.

### Important!

- Remove this product from crib once the child can sit up unassisted or begins to push up on hands and knees.
- The mobile is intended for visual stimulation and is not intended to be grasped by a child.
- This product may not attach to all crib designs.
- Do not add additional strings or straps to attach to a crib or playpen. Only use the attachments provided.
- To ensure your child's safety, please follow the instructions carefully and make sure the final assembly is correct.  
Check frequently.
- Always attach all provided fasteners (strings, straps, clamps, etc) tightly to a crib according to the instructions.  
Check frequently.
- Attach only to cribs with sturdy rails and spindles.
- If you are attaching this toy to a crib side rail that can be lowered and raised, make sure the crib side rail is in the raised (locked) position whenever a child is in the crib.
- Please check the unit frequently to ensure it is still secure.

Item No. 43228980  
MADE IN CHINA  
FOR AU/NZ:IMPORTED FOR KMART STORES IN AUSTRALIA AND ZEALAND.