

Bike Wheel LED Lights

Keycode 43271474

Instruction Manual

Please read the entire instruction manual before using the product and then save it for future reference. We reserve the right for any errors in text or images and any necessary changes made to technical data.

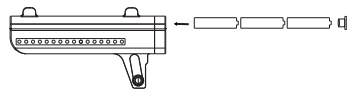
Safety

- Do not point the light beam into anyone's eyes.
- Do not let children play with the product.
- Never subject the product to high temperatures or naked flames.

WARNING: INSERT BATTERIES IN THE CORRECT POLARITY AND ALWAYS FOLLOW THE MANUFACTURER'S INSTRUCTIONS. DO NOT MIX NEW AND USED BATTERIES, ALKALINE, STANDARD (CARBON-ZINC), OR RECHARGEABLE (NICKEL-CADMUM) BATTERIES. REMOVE BATTERIES IF PRODUCT WILL BE STORED FOR AN EXTENDED PERIOD. DISPOSE OF USED BATTERIES RESPONSIBLY.

WARNING: THIS PRODUCES FLASHES THAT MAY TRIGGER EPILEPSY IN SENSITISED INDIVIDUALS.

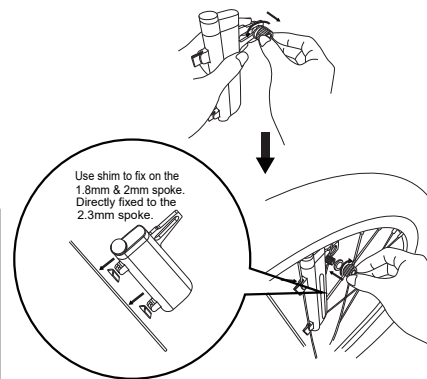
Instructions for use batteries



required 3 x 1.5V AAA batteries (not include)

- Crew off the silver cap.
- Insert 3xAAA batteries. Follow the marking in the battery compartment to ensure correct polarity. Never mix old and new batteries. Never mix rechargeable and non-rechargeable batteries.
- Reassemble the silver cap.

Mounting



- Attach the light to the spoke.

Switching on/off

On - Work when vibrating.
Off - Enter standby mode after 25 seconds.

Care and maintenance

- Clean the product by wiping it with a damp cloth. Use only mild cleaning agents, never solvents or corrosive chemicals.
- Remove the batteries if the lights are not to be used for a long time.

