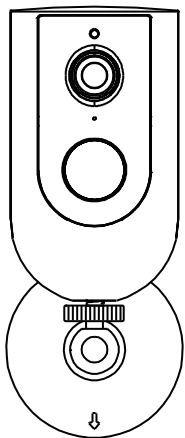


# Quick Start Guide

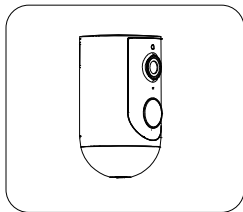
## **FULL HD Battery Wi-Fi Outdoor Camera**



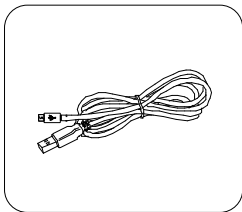
Model I004776

KEYCODE: 43274468

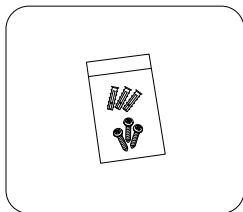
## Packaging contents



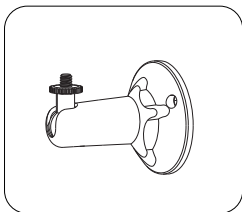
Battery camera



Charging cable

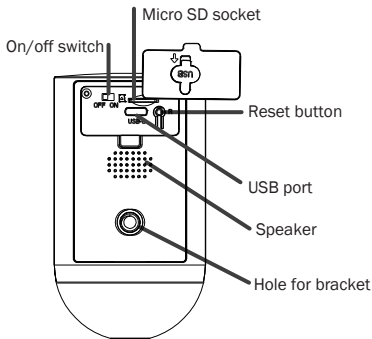
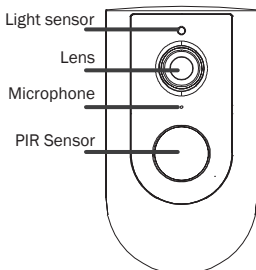


Installation set

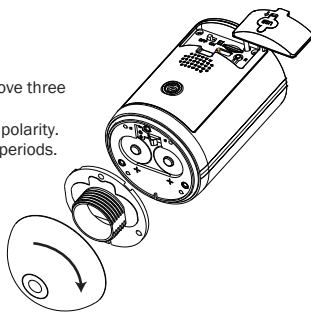


Screw Bracket

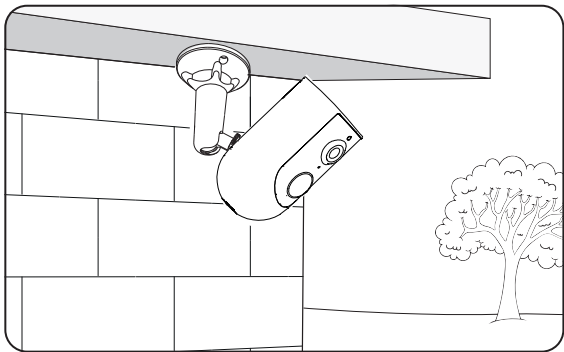
# Description



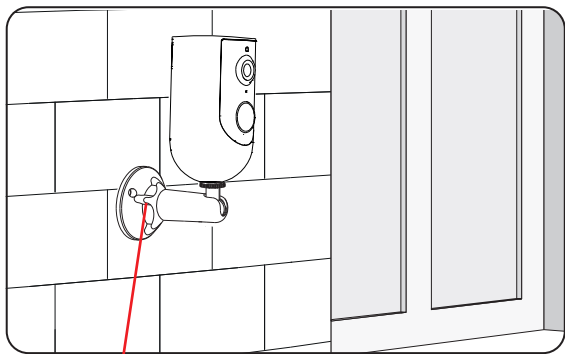
Battery replacement, when necessary  
Unscrew bottom cover anticlockwise, remove three screws to access battery compartment.  
Ensure batteries are inserted with correct polarity.  
Remove batteries when not used for long periods.



## Installation



Suspended (sheltered)



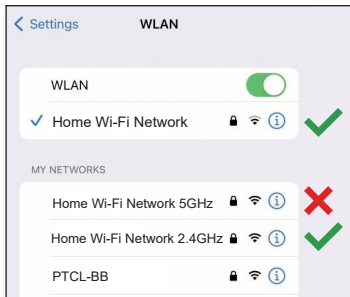
Mount on wall

Once In desired position/angle,  
twist and lock nut into place

# Connection Preparation

It is important that your phone is connected to a 2.4Ghz Wi-Fi and not to a 5GHz network.

To verify your mobile device is set to a 2.4Ghz Wi-Fi network, navigate to the **Settings** menu and click on Wi-Fi. In this menu you will see all the available networks in your area. Locate the SSID (the name of your network) and ensure that the Wi-Fi SSID does not end with a 5G / 5GHz.



Check that you have a strong Wi-Fi signal (at least two bars) in the location where the smart camera is to be installed.



If you don't have at least two bars signal on your phone, then you may need to reconsider relocating the camera to a different location or obtain a Wi-Fi extender to boost the Wi-Fi signal strength.

## **Install the Mirabella APP and register Account**

To access your camera and its functions download the "Mirabella Genio" APP to your smartphone from the App Store or Google Play then add your device to the APP.

## **Insert a Micro SD card**

Please note that the camera will work without an SD card, but it will not be able to record any footage.

Insert the Micro SD card gently into the SD card slot. Please pay attention to the direction of the Micro SD card. Do not force it inside. Micro SD card size needs to be between 8GB and 128Gb, FAT32 format only, This camera doesn't support NTFS file system.



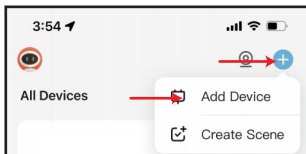
**Insert like this way**

# Pairing the doorbell using Mirabella Genio App

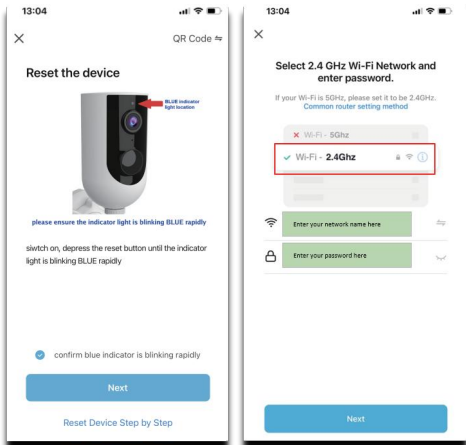
1.Charge the battery, slide ON/OFF switch to ON. Then wait for the indicator light to start blinking BLUE rapidly(1 blink every second) . If it fails to blink, press the reset button and hold until you hear an audible sound, the camera is now ready to pair.

2.Check your mobile phone is connected to the 2.4Ghz Wi-Fi network, (Wi-Fi name should not end with -5G).

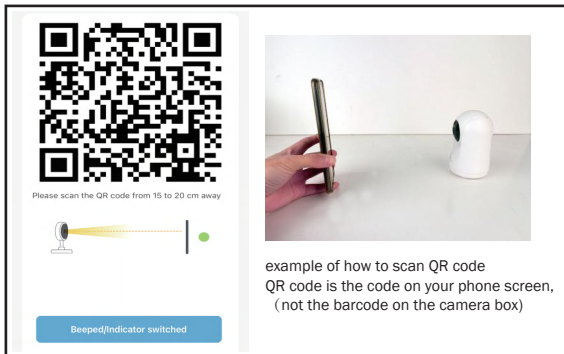
3.Open the Mirabella Genio APP, tap on blue “+” icon, then choose add device, then select Security & Sensor and select your camera from the list.



4. Confirm that the LED indicator light is still blinking rapidly blue, tap “confirm blue indicator is blinking rapidly”, then tap “next” and enter your home network 2.4GHz Wi-Fi name and password.

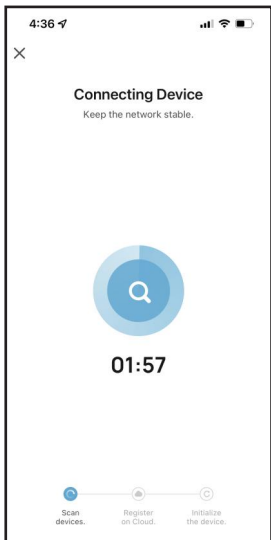
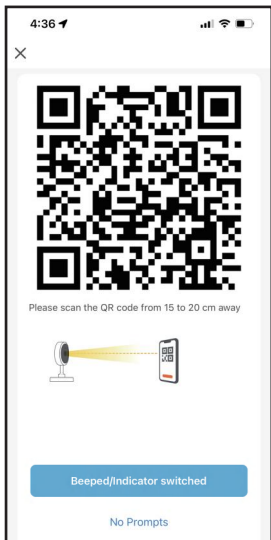


Tap next and the QR code will appear on your phone screen, place this QR code in front of the camera at approximate 15-20cm, until you hear a sound,

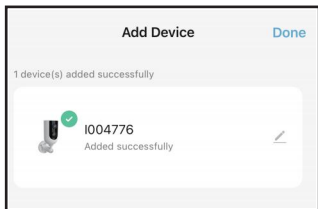




Tap on “Beeped/Indicator switched” It will then start to connect your device.  
(refer to the 1st & 2nd images).



5. Once the countdown ends, the Camera has now successfully been paired to your APP.  
Please refer to the FAQ section for troubleshooting if this method does not connect.



if somehow the QR code method does not work,  
please reset and retry using the EZ method.

## FAQ

### **Q. LED indicator is not blinking rapidly as per APP screen**

A. Power off the camera, wait for 20 sec, depress the reset button until you hear a sound, then release the button, wait for another 30-40 sec until the light starts to blink blue rapidly again (1 blink every second).

### **Q. Camera doesn't scan the QR code**

A. Please ensure camera is in the pairing mode, indicator light is blinking blue rapidly as per the APP screen, if you are unsure, please simply reset it.

### **Q. I am using Telstra NBN, I disabled the 5Ghz and still can't get it to pair?**

A. Please follow the Guest Network pairing instructions at <https://mirabellagenio.net.au/faqs>

### **Q: Camera will not connect to my Wi-Fi network**

A: Make sure the Wi-Fi network is a 2.4GHz network, device will not connect to a 5GHz network. Also make sure your Wi-Fi name has no space, your Wi-Fi network password is case sensitive, make sure you are entering it correctly.

Refer to our website's FAQ and check for your router is listed as some routers are set up differently.

### **Q: The camera is off-line**

A: There could be a temporary issue with your internet connection (e.g., service disruption). Please try again in a few minutes.

Make sure your Wi-Fi router is turned On.

Make sure the camera is getting a good signal from your Wi-Fi router. Use your phone to check range, it is recommended to have at least 2 signal bars showing proper connection.

### **Q: How to reset the camera to reenter pairing mode?**

A: Press and hold reset button (see Product Details section) until you hear an audible tone.

### **Q: Live video stream is slow to load**

A: Camera streaming issues may be caused by any of the following: Your phone's cellular connection, which relies on mobile coverage. Limited internet bandwidth at home, for example, other video streaming services running at the same time on your network can cause congestion slowing down the internet upload and download speeds. Wi-Fi reception may not be stable or work reliably if the camera's Wi-Fi signal strength is less than 2 signal bars. You may need to install a Wi-Fi repeater or extender to boost the Wi-Fi signal.

### **Q: The camera is not recording?**

A: Make sure that the microSD card is installed correctly. To confirm the camera is recognizing the microSD card, go to storage Settings in the Settings menu and make sure the micro SD Card capacity shows Total capacity, Used and Free space.

If this does not appear you may consider reformatting the microSD card. **WARNING:** Reformatting micro SD card will delete all videos stored on card. Once SD card is formatted, your recordings will be stored on the card and can be accessed via the playback button.

### **Q: What happens when the microSD card reaches full capacity?**

A: Once the microSD card reaches full capacity, new videos will start rewriting (deleting) over the oldest videos.

### **Q: Why I can't get the notifications with my cell phone App?**

A: Confirm that the App has been running on the phone, and the relevant reminder function has been opened; Message notification and authority confirmation in the mobile phone system have been enabled.

### **How to connect camera to another router**

Go to the camera settings page, look for “remove device” Remove it and reset the camera, pair it again to the new router through the app.

### **Poor performance, takes a long time to load the live footage**

Please check the Wi-Fi signal, if it is less than 60%, you will need consider changing the camera location or purchasing a Wi-Fi extender to boost the signal.

### **Camera went offline and doesn't reconnect back online by itself**

Go the camera' settings page, look for “remove device” Remove it and reset the camera and pair it again through the app.

### **Followed the pairing process but still receive the error Cannot find Device**

Manually disable the 5Ghz Wi-Fi signal on the router setting.

Ensure that the 2.4Ghz Wi-Fi signal is on.

Ensure the indicator light is blinking BLUE rapidly as per APP screen (1 blink per second)

Please check you have entered the correct 2.4Ghz Wi-Fi SSID and password.

### **I am using Telstra NBN, I disabled 5Ghz and I still cannot get it to pair**

Please follow the Guest Network paring instructions on <https://mirabellagenio.net.au/faqs>

If you have done all of the above, ensuring that 5Ghz is disabled.


### **How to turn on or turn off movement notification**

On the Genio APP home screen, Tap on **Me -> Settings -> App Notification -> turn on/off**

Enable notifications

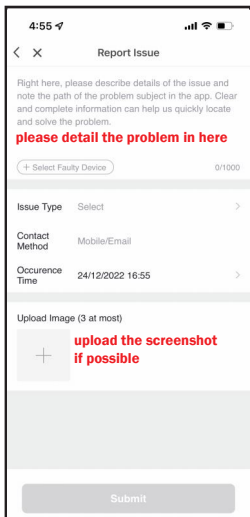
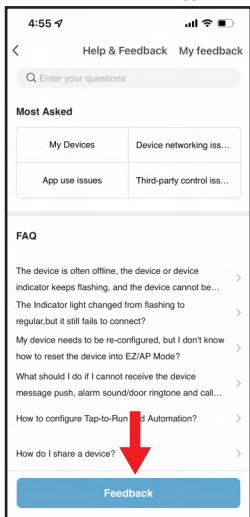
On the iphone, **Settings -> Notifications -> turn on/off Allow Notifications** for the Mirabella Genio app.

### **For multiple camera setup, change camera view or arrange device set up sequences and manage rooms**

On the genio APP home screen, tap on  on the top right corner, to access these options, tap on V to switch below rooms. Tap on x to exit this mode

## Need more help or need further technical assistance from Mirabella engineer

On the genio APP home screen, tap on, Me, -> FAQ & Feedback -> Report issue  
Fill the fault information or suggestion for the APP/product, then submit



**Remember the performance of your Wi-Fi camera is relies heavily on the performance of your router,  
If you are using Telstra NBN or a dual-band router, you must disable the 5GHz Wi-Fi in order to make  
a successful connection and for best overall performance, as MOST smart products in Australia only  
work on the 2.4Ghz signal.**

Always read the instruction manual and any warnings on the device before using a lithium-ion battery.

Rechargeable lithium-ion batteries can explode, release flames, and/or cause burns if disassembled, punctured, cut, crushed, short-circuited, incinerated, recharged incorrectly, or exposed to water, fire, or high temperatures.

1. Use the battery charger and AC adapter specified for use with the lithium-ion battery.
2. Do not force the lithium-ion battery into a battery charger or device if it does not fit.
3. Do not throw lithium-ion batteries into a fire or heat source also lead to overheating, explosion or fire.
4. Do not connect the positive and negative terminals of the lithium-ion battery with a metal object.
5. Do not throw lithium-ion batteries, drop them from high places, or otherwise subject them to strong impacts
6. Do not put a lithium-ion battery in a microwave oven, pressure container, or other such devices.
7. Do not place combustible materials on top of or over a lithium-ion battery when charging or discharging.
8. Do not disassemble or modify a lithium-ion battery.
9. When the electric device is not being used for an extended.



All trademarks are used for reference purposes only. Made in China  
ANKO, HOME&CO AND AUDIOSONIC® ARE TRADEMARKS OF KMART AUSTRLIA LIMITED.

MIRABELLA INTERNATIONAL PTY LTD  
1 MIRABELLA DRIVE, TULLMARINE, VIC, AUSTRALIA 3043  
TOLL FREE: 1800 636 528, [www.mirabellagenio.com.au](http://www.mirabellagenio.com.au)

