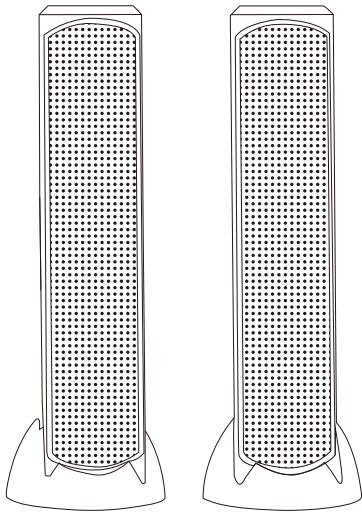




## BLUETOOTH SPEAKER WITH RGB 43277629 User Manual



Please read all instructions carefully and keep for future use.

### Specification

Bluetooth Version	: V5.0
Speaker specifications	: 2x2Inch
Supply Voltage	: USB DC 5V
Power	: 2x6W

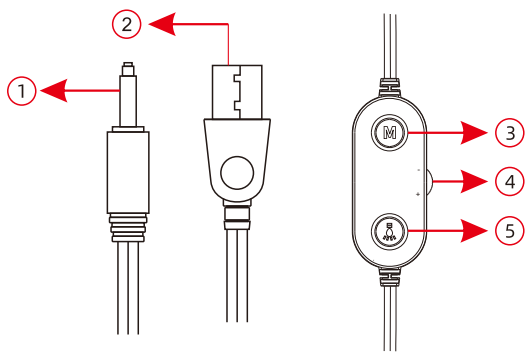
### In the box

Speaker x 1  
Manual x 1

### Important Precautions:

1. Don't expose the unit to liquid, moisture or humidity.
2. If liquid breaches the unit, disconnect all devices and cables and discontinue using the product.
3. Ensure there is at least 50cm around the device to allow for ventilation.
4. Do not cover or block any ventilation outlets on the device.
5. Keep away from flames and other heat sources.
6. Exposure to extreme high temperatures or fire may result in explosion.
7. Do not listen to excessively loud music over an extended period of time, as this can cause hearing damage.
8. Don't assemble or disassemble the unit to avoid electric shock, if there is water on your hands.
9. Performance may be affected if used in areas with electromagnetic interference.
10. Dispose of plastic packaging material immediately. Keep away from Children
11. Do not connect the unit to a power supply source exceeding 15W. Rated 5V d.c. 1A.

### Function Overview



#### 1. AUX audio 3.5mm jack

-Insert to the PC computer for audio sound output.

#### 2. USB power supply interface

-Plug into to the PC computer to ensure power supply the speaker.

#### 3. Mode switch/ Play or Pause button

-Long press to switch between the Bluetooth and AUX mode.

-Quick press to play or pause the music.

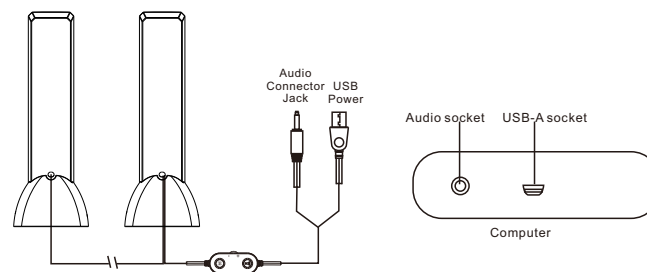
#### 4. Volume adjustment

-Turn up(+) or down(-) to adjust the speaker volume.

#### 5. Speaker light switching button

-Press to switching the light effects and turn off the light.

### How to use this speaker



### Function Operation:

1. Connect: Connect the USB power supply interface and the AUX audio 3.5mm jack to the corresponding interface of the computer.
2. Play: After connecting, you can play the audio on your computer.
3. Volume adjustment: Turn up(+) or down(-) to adjust the speaker volume, Or you can adjust the volume through the computer.

### Bluetooth Instructions

1. Power on the speaker.
2. Long press the M button if the speaker is on AUX mode.
3. Switch on your Bluetooth device and search for 43277629 to connect it, you can hear the Ding Dong tone from the speaker when connected successfully.
4. Long press the M button to disconnect the Bluetooth and enter into the AUX mode.

### 12 Month Warranty

Thank you for your purchase from Kmart.

Kmart Australia Ltd warrants your new product to be free from defects in materials and workmanship for the period stated above, from the date of purchase, provided that the product is used in accordance with accompanying recommendations or instructions where provided. This warranty is in addition to your rights under the Australian Consumer Law.

Kmart will provide you with your choice of a refund, repair or exchange (where possible) for this product if it becomes defective within the warranty period. Kmart will bear the reasonable expense of claiming the warranty. This warranty will no longer apply where the defect is a result of alteration, accident, misuse, abuse or neglect.

Please retain your receipt as proof of purchase and contact our Customer Service Centre on 1800 124 125 (Australia) or 0800 945 995 (New Zealand) or alternatively, via Customer Help at [Kmart.com.au](http://Kmart.com.au) for any difficulties with your product. Warranty claims and claims for expense incurred in returning this product can be addressed to our Customer Service Centre at 690 Springvale Rd, Mulgrave Vic 3170.

Our goods come with guarantees that cannot be excluded under the Australian Consumer Law. You are entitled to a replacement or refund for a major failure and compensation for any other reasonably foreseeable loss or damage. You are also entitled to have the goods repaired or replaced if the goods fail to be of acceptable quality and the failure does not amount to a major failure.

For New Zealand customers, this warranty is in addition to statutory rights observed under New Zealand legislation.