

Automated Pet Feeder User Manual



43-279-272

Please read all information carefully before you use the product and keep the manual for future reference.

Includes

Main Unit
1pc AC adaptor + 1pc A to A charging cable

Specification

Programming: Maximum 5 meals per day, each press adds 10g, maximum food bowl maximum capacity is 400g.
Capacity: 5L (Dry food with particles smaller than 15mm only)
Dual Power Mode: Output DC power adaptor, 5V 1A & 3 x 1.5V D Type batteries

Warning

- Do not place your fingers into the outlet or the rotor.
- The product requires 3 x 1.5V D Type batteries (Note: Remove the batteries if the product is not used for a longer period).
- Batteries:
 - Remove battery cover.
 - Place batteries inside.
 - Securely replace the battery cover.
- Applicable for dry food only.
- The pet food size should not exceed 15mm to prevent jamming of the dispenser.
- With batteries only, the feeder can work for up to one month.
- Batteries are not included.
- The protective device cannot be replaced after a short-circuit or overload.
- Symbols on AC adaptor rating label.
 - Indoor use only
 - SMPS (Switch mode power supply)
 - SMPS incorporating a short-circuit-proof isolating transformer (non-inherently)
- This appliance is not intended for use by persons (including children) with reduced physical, sensory or mental capabilities, or lack of experience and knowledge, unless they have been given supervision or instruction concerning use of the appliance by a person responsible for their safety. Children should be supervised to ensure that they do not play with the appliance. The appliance is only to be used with the power supply unit provided with the appliance. Non-rechargeable batteries are not to be recharged; Rechargeable batteries are to be removed from the appliance before being charged; Different types of batteries or new and used batteries are not to be mixed; Batteries are to be

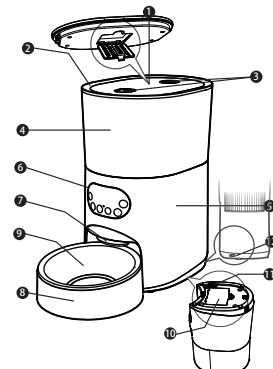
inserted with the correct polarity; Exhausted batteries are to be removed from the appliance and safely disposed of; If the appliance is to be stored unused for a long period, the batteries should be removed; the supply terminals are not to be short-circuited.

Notes

- The product works up to 30 days with batteries as the only power source.
- To prevent jamming, use dry pet food smaller than 15mm in size.
- To avoid failure and injury, monitor the condition of your appliance.
- Do not put anything other than dry pet food into the feeder.

Product Structure

- Dryer
- Cover
- Cover Buckle
- Transparent Container
- The Machine
- Control Panel
- Food Outlet
- Food Tray
- Stainless Steel Bowl
- Battery Case
- Speaker
- Electric Source Socket



Display Screen

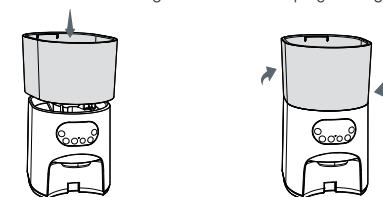


Notes

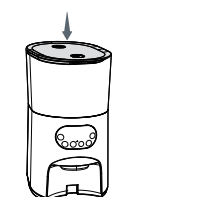
- When its working without any operation, the feeder will automatically turn off after 1 minute without use. All buttons cease working until reactivation. User can hold the Back/Lock button for 2 seconds to unlock the feeder.
- The feeder will work approx. 30 days on batteries without being plugged into an outlet.
- This machine is applicable for multiple cats and small dogs.

Assemble the Feeder

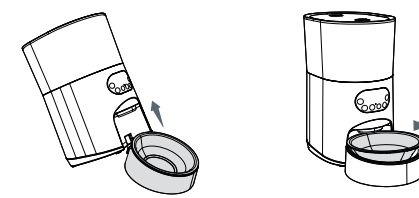
- Assemble the container, cover and food tray
 - Insert the container into the groove and lock it up by twisting clockwise.



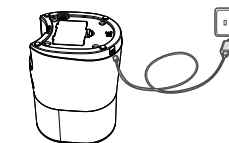
(2) Fasten the cover.



(3) Connect the food tray with the machine, and place the stainless steel bowl in the tray.



- Connect the power (dual power mode is suggested to use)
 - Connect the USB cord, plug in the socket.



(2) If you want to run the feeder on batteries, insert 3 x 1.5V D Type batteries on the bottom. Ensure the polarity of the batteries match the polarity inside the battery compartment.



3. Insert the dryer
The dryer keeps the food fresh and dry. Change every 60 days. Remove the dryer when cleaning the cover.



4. Add food to the container



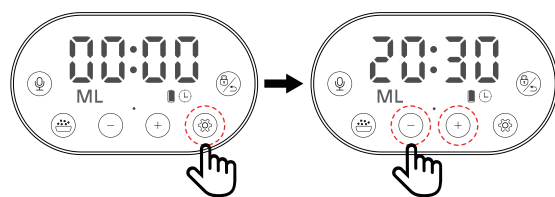
445 mm

Instructions on Operation

Hold "+" and "-" for 5 seconds to restore factory settings.
Hold "+" for 2 seconds to unlock / lock feeder.

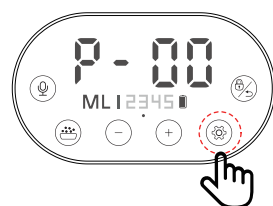
1. Set the time

- Press and hold Setting button "+" for 2 seconds to enter setting mode.
- When clock symbol "⌚" is flashing, use "+" and "-" to set the hour.
- Then press Setting button "+" again and use "+" and "-" to set the minutes.
- Press Setting button "+" again to finish and move on to confirm the meal. For example: The current time is 20:30.



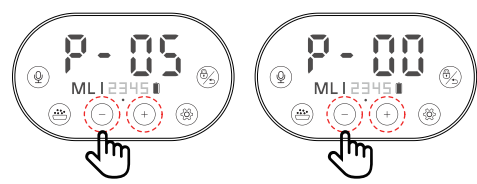
2. Confirm the meal

- "ML 1" flashes to indicate that you want to set the first meal.
- Press Setting button "+" to confirm the meal and move on to portion size. As the picture shows.



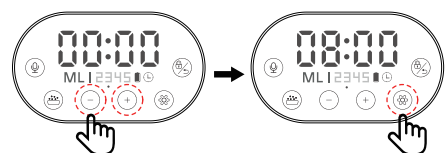
3. Set Portion Size

- Portions are multiples of 10g, up to 400g.
- Example: If you want to reserve a 10g serving, adjust the quantity to 1 (P-01). If 20g, set P-02, and so on. Picture below shows P-05 means 50g per meal.
- If you do not want to set this meal, set the portion size to 0 (P-00). As the picture shows.
- When the portion is set, press Setting button "+" to set the feeding time.



4. Set Feeding Time

- Set the hour by using "+" and "-", e.g. 8:00, press Setting button "+" and adjust the minutes again by using "+" and "-".



- Press Setting button "+" again to skip to the next meal. Repeat the steps for Meal 2 to 5. When finished, save and exit setting mode by pressing Setting button "+" again.

- If you want to set less than 5 meals, long press Setting button "+" after the desired number of meals to save and exit the setting mode.

- Once set up successfully, the screen will show how many meals you have reserved a day.
- E.g. ML 1 → Set up 1 meal a day; ML 1 2 → Set up 2 meals a day; and so on, ML 1 2 3 4 5 → Set up 5 meals a day.

Notes: If you wish to feed your pet without having to wait, please press Feeding Button "+" directly, each press is 7-10 g.

5. Voice Recording

- Notes: The playback volume may seem low, but pets have better ears than humans, so speak in a normal voice while recording.

(1) Start recording

Hold the record button "🎤" when you hear a beep, the recording starts. Speak your voice message and to finish release the button. The recording will automatically be played back to you. Max recording time is 10 seconds.

(2) Play the recording

After recording, you can play it back by pressing Recording button "🎤".

(3) Delete recording

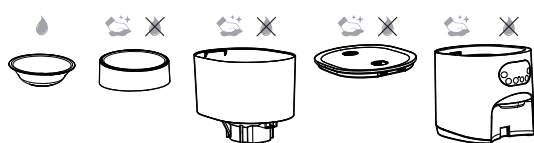
Hold Recording button "🎤" pressed until you hear a beep, then release without recording a message.



Important Notes

1. Cleaning and Maintenance

- Please clean the feeder regularly for hygienic reasons.
- Stainless steel bowl is dishwasher safe.
- The main body cannot be washed in the sink or dishwasher. To clean it, please use a damp cloth.



2. Troubleshooting

- E-01 shows on the screen: Food stuck in the outlet, please clean.



- E-02 shows on the screen: General malfunction, try to restart the machine.



Different colors of battery icon

- Battery indicator shows which power source is used and the remaining capacity.
- Battery icon flashing: No batteries.
- White icon: 50%-20% battery power left.
- Pink icon: 50%-20% battery power left.
- Red icon: Low battery power notice, battery power less than 20%

12 Months Warranty

Thank you for your purchase from Kmart.

Kmart Australia Ltd warrants your new product to be free from defects in materials and workmanship for the period stated above, from the date of purchase, provided that the product is used in accordance with accompanying recommendations or instructions where provided. This warranty is in addition to your rights under the Australian Consumer Law.

Kmart will provide you with your choice of a refund, repair or exchange (where possible) for this product if it becomes defective within the warranty period. Kmart will bear the reasonable expense of claiming the warranty. This warranty will no longer apply where the defect is a result of alteration, accident, misuse, abuse or neglect.

Please retain your receipt as proof of purchase and contact our Customer Service Centre on 1800 124 125 (Australia) or 0800 945 995 (New Zealand) or alternatively, via Customer Help at Kmart.com.au for any difficulties with your product. Warranty claims and claims for expense incurred in returning this product can be addressed to our Customer Service Centre at 690 Springvale Rd, Mulgrave Vic 3170.

Our goods come with guarantees that cannot be excluded under the Australian Consumer Law. You are entitled to a replacement or refund for a major failure and compensation for any other reasonably foreseeable loss or damage. You are also entitled to have the goods repaired or replaced if the goods fail to be of acceptable quality and the failure does not amount to a major failure.

For New Zealand customers, this warranty is in addition to statutory rights observed under New Zealand legislation.

445 mm