

anko

Cosmetics Cooler with Mirror User Manual

Read and Save These Instructions




Model No.: MFA-5L-P
Rev 1

1	Safety Instructions	4
2	Features	6
3	Components.....	6
4	Preparation	7
5	Operation	7
5.1	ON / OFF	7
5.2	Cool	7
5.3	Heat	8
5.4	Mirror Light.....	8
6	Usage – Cooling	9
7	Usage – Heating	9
8	Carry Handle	9
9	Care and Cleaning	10
10	Storage	10
11	Warranty Against Defect	11

1 Safety Instructions

When using electrical appliances, basic safety precautions should always be followed, including the following:

- Carefully read this instruction manual before using the appliance. 
- Keep this appliance out of reach of young children.
- This appliance is not intended for use by persons (including children) with reduced physical, sensory, or mental capabilities, or lack of experience and knowledge unless they have been given supervision or instruction concerning the use of the appliance by a person responsible for their safety.
- Children should be supervised to ensure that they do not play with the appliance.
- Ensure children and babies do not play with plastic bags or any packaging materials.
- Do Not disassemble the appliance. There are no user-serviceable parts inside.
- Do not store explosive substances such as aerosol cans with a flammable propellant in this appliance.
- This appliance is intended to be used in household and similar applications such as:
 - staff kitchen areas in shops, offices, and other working environments
 - farmhouses and by clients in hotels, motels, and other residential type environments
 - bed and breakfast type environments
 - catering and similar non-retail applications
- **WARNING:** When positioning the appliance, ensure the supply cord is not trapped or damaged.
- **WARNING:** Do not locate multiple portable socket outlets or portable power supplies at the rear of the appliance
- **VERY IMPORTANT:** Ensure that the appliance does not get wet (water splashes etc.). Do not use the appliance with wet hands.
- Do not immerse the appliance in water or other liquids or use near sinks, baths, or showers.
- Always operate the appliance from a power source of the same voltage, frequency and rating as indicated on the product identification plate.
- Position the power supply lead properly so that they will not be walked on or pinched by items placed on or against them.
- Use the appliance only for its intended use. The appliance is intended for household use only and not for commercial or industrial use.
- Do not use the appliance if it has been dropped or any part of the appliance (including cord or plug) has been damaged. For electrical safety, any repairs to the product must be performed by a qualified electrical person only.

- If the supply cord is damaged, it must be replaced to avoid a hazard.
- Use only accessories supplied with the product. The use of accessories not intended for use with this appliance may cause injuries to the user or damage to the appliance.
- Do not install the unit on other appliances, on uneven surfaces or where it could be subject to heat sources (e.g., radiators or stoves), direct sunlight, excessive dust, or mechanical vibrations.
- Appliance should not be used outdoors, placed near a hot gas or electrical burner, or placed in a heated oven.
- Do not install near any heat sources such as radiators, heat registers, stoves, or other apparatus that produce heat.
- Do not operate the appliance underneath or near flammable or combustible materials (e.g., curtains). Keep at least 300mm clearance around the sides, back, front, and top.
- Unplug this apparatus during lightning storms or when unused for long periods of time.
- Do not block any ventilation openings.
- Unplug the appliance before cleaning.
- Any repairs to the product must be carried out by a qualified electrical person only or the product must be disposed of. There are no user-serviceable parts in this appliance.
- If this appliance is used by a third party, please supply the instruction manual with it.
- Do not misuse the cord. Never carry the appliance by the cord or pull it to disconnect it from the outlet. Instead, grasp the plug and pull to disconnect.
- Do not insert or allow foreign objects to enter the grille openings as this may cause damage to the appliance and/or injury to the user.
- Be sure the unit is placed on a stable surface when operating.
- Turn off and unplug the unit before moving. Move the unit slowly and carefully.
- Turn off, unplug, and empty the water from the unit if you are not going to use it for a long time.
- If using the Heating function, take care as the internal surface temperatures can burn the skin.
- No liability can be accepted for any damage caused by non-compliance with these instructions or any other improper use or mishandling of the appliance.

Additional Safety Instructions

If using an extension cord:

- The technical specifications of the extension cord must match or exceed the technical specifications of this appliance.
- Do not allow the cord to hang over the edge of the work surface or to come into contact with stoves or other hot surfaces.

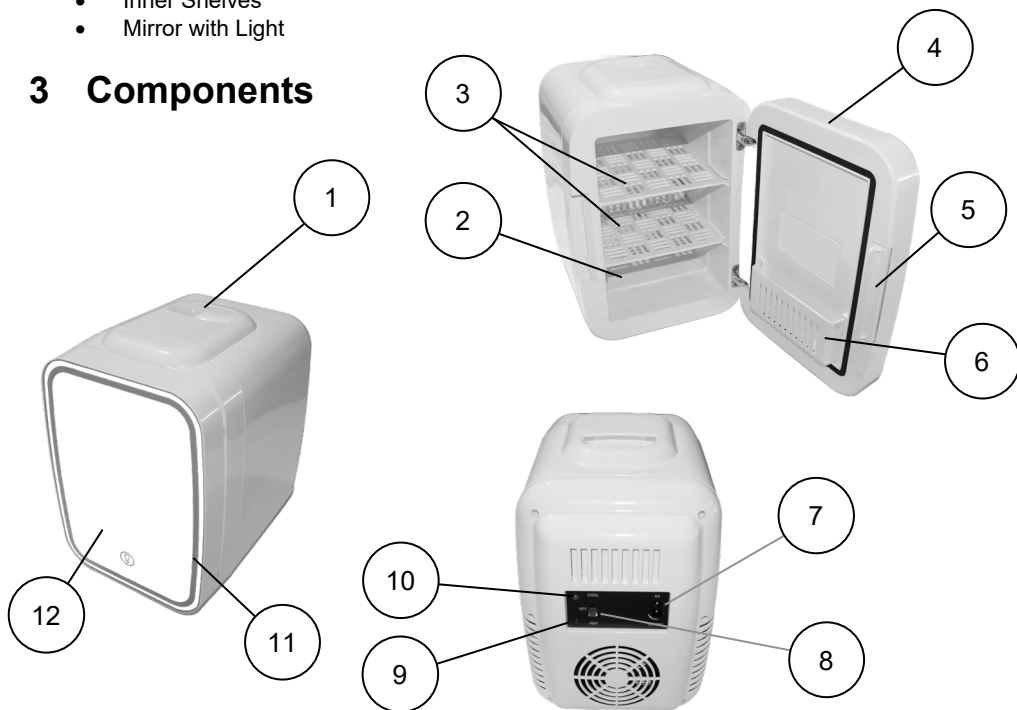
- If the cord or plugs are worn or damaged, do not use.
- Unplug from the power socket by grasping the plug body - Do Not pull on the cord.

Read and Save These Instructions

2 Features

- Cooling created by Thermo-electric Peltier module (no compressor).
- Heat created by Thermo-electric Peltier module (no heating elements).
- Easy operation.
- Near silent operation.
- Compact size.
- Inner Door Pocket (Max Storage Weight: 150g)
- Inner Shelves
- Mirror with Light

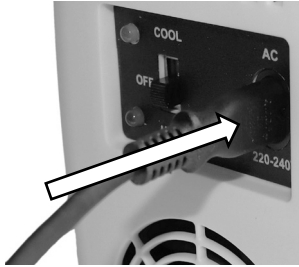
3 Components



1	Carry Handle	7	Mains Power Inlet Socket
2	Metal Cabinet	8	On / Off Selector Switch
3	Shelves	9	Heating Indicator Light
4	Door Seal	10	Cooling Indicator Light
5	Door Handle / Latch	11	Slim Mirror Light
6	Inner Door Pocket Max Storage Weight: 150g	12	Mirror

4 Preparation

- Before using the appliance, please set it up as follows:
- Fully unravel the power supply cord.
- Plug the small plug into the back of the appliance and push in hard as shown.



5 Operation

Important: Refer to the Section “Safety Instructions” before use.

- Insert the Power Supply Plug into the Power Point and switch it on.

5.1 ON / OFF

- Located at the back of the appliance is the On / Off Selector switch.
- With the Switch to Off Position the appliance will not Cool or Heat.



5.2 Cool

- Slide the Switch to the “Cool” position and the Green Light will illuminate indicating the appliance is Cooling.

5.3 Heat

- Slide the Switch to the “Heat” position and the Red Light will illuminate indicating the appliance is Heating.

Important:

DO NOT switch the appliance from Cool to Heat without first allowing the appliance to warm up naturally to the ambient room temperature.

Open the Door and let it sit for at least 30 minutes before changing the function.

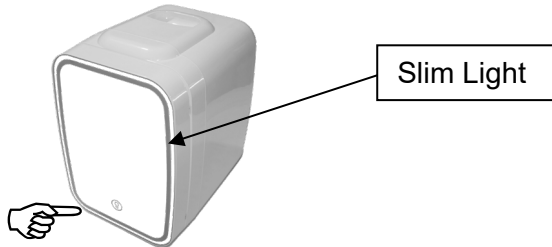
DO NOT switch the appliance from Heat to Cool without first allowing the appliance to cool down naturally to the ambient room temperature.

Open the Door and let it sit for at least 30 minutes before changing the function.

Note: Depending on the ambient temperature and the items placed inside, it could take a few hours to reach the desired temperature either cooling or heating.

5.4 Mirror Light

- Touch the “Light Bulb” icon on the bottom of the mirror and the slim light surrounding the mirror will illuminate at full brightness.



- Touch the “Light Bulb” icon again and the slim light will reduce to the “Mid” brightness level.
- Touch the “Light Bulb” icon again and the slim light will reduce to the “Low” brightness level.
- Touch the “Light Bulb” icon again and the slim light will turn off, and so on.

6 Usage – Cooling

Important: Do not place food or drink items inside this appliance.

Storing at a cooler temperature helps prevent most cosmetic liquids and gels from drying out or thickening which also helps in a smoother and easier application.

The types of cosmetics that you can store at lower temperatures are items such as Nail Polish and Nail Polish Removers, Perfumes, Lipsticks, Lip Balms, Face Mister, Applicators, Eye Creams and Serums, Face Creams, Pencils (Eyeliner), Organic Cosmetics, etc.

Do Not crowd the items so as to allow air circulation for a more effective cooling environment.

7 Usage – Heating

Important: Do not place food or drink items inside this appliance.

This product can also be used to heat cosmetic products so as to make it easier for application.

The type of products that you can heat are items such as Hair Removal Wax or Wax Strips, Oils, Facial Cloths, etc.

Do Not crowd the items so as to allow air circulation for a more effective heating environment.

Caution: Take care when opening the door as the internal surfaces and products may be very hot.

8 Carry Handle

There is a foldaway carry handle built into the top of the unit for ease of moving from room to room.

IMPORTANT: Never carry the product by the power cord.

9 Care and Cleaning

- Turn off and unplug the unit from mains power before cleaning.

IMPORTANT: Never spray with liquids or submerge the unit in water or any other liquid.

Do Not use flammable liquids, chemicals, abrasive creams, steel wool or scouring pads for cleaning.

- Wipe the unit over with a damp (not wet) cloth with fresh clean lukewarm water and mild detergent.
- Wipe over again to remove any detergent residue and thoroughly dry before reusing.
- Do not let the switch or power inlet socket in the back get wet or splashed. Ensure the power inlet socket is perfectly dry before inserting the power supply plug.
- If the vent holes are dusty, you can use a vacuum cleaner with a “non-rotating” brush attachment to gently vacuum the dust away.

Important: **Do Not** poke any objects into the vent holes.

10 Storage

- Switch off and unplug the appliance from the mains power and from the back of the unit.
- Coil the power supply cord loosely and place it inside the appliance.
- Store in a dry well-ventilated area.

11 Warranty Against Defect

12 Month Warranty

Thank you for your purchase.

Your new product is warranted to be free from defects in materials and workmanship for the period stated above, from the date of purchase, provided that the product is used in accordance with accompanying recommendations or instructions where provided. This warranty is in addition to your rights under the Australian Consumer Law. For New Zealand customers, this warranty is in addition to statutory rights observed under New Zealand legislation.

We will provide you with your choice of a refund, repair (where possible) or exchange (availability dependent) for this product if it becomes defective within the warranty period. The business will bear the reasonable expense of claiming the warranty. This warranty will no longer apply where the defect is a result of alteration, accident, misuse, abuse or neglect.

Please retain your receipt as proof of purchase and contact our Customer Service Centre as listed below, for the entity you purchased this product from, for any difficulties with your product. Warranty claims and claims for expenses incurred in returning this product can be addressed to the respective Customer Service Centre.

Our goods come with guarantees that cannot be excluded under the Australian Consumer Law. You are entitled to a replacement or refund for a major failure and compensation for any other reasonably foreseeable loss or damage. You are also entitled to have the goods repaired or replaced if the goods fail to be of acceptable quality and the failure does not amount to a major failure.

Contact for Kmart purchases	Contact for Target purchases
Kmart Australia Ltd. C/- Customer Service Centre, 690 Springvale Road, Mulgrave Vic 3170 Customer Service: 1800 124 125 (Australia) or 0800 945 995 (New Zealand) or via Customer Help at kmart.com.au	Target Australia Pty Ltd. C/- Customer Service Centre, 2 Kendall Street, Williams Landing, Vic, 3027 Customer Service: 1300 753 567 or via Customer Help at target.com.au/help/contact-us

IMPORTANT! For all technical queries or difficulties in operating the product and for spare parts, contact H.E. Group customer service 1300 105 888 (Australia) and 09 8870 447 (New Zealand).

