

# anko

## Head Shaver User Manual



Model No.: RQ-778

Rev 1

**Note:** The specifications and/or components of this appliance are subject to change without prior notice.



<b>1</b>	<b>Safety Instructions</b>	<b>5</b>
<b>2</b>	<b>Components</b>	<b>8</b>
<b>3</b>	<b>Instructions for Use</b>	<b>8</b>
3.1	Charging the Shaver	8
<b>4</b>	<b>Operation</b>	<b>10</b>
<b>5</b>	<b>Travel Lock</b>	<b>11</b>
<b>6</b>	<b>Intelligent Display</b>	<b>11</b>
<b>7</b>	<b>Care and Cleaning</b>	<b>12</b>
7.1	Cleaning	12
7.2	Lubrication	13
<b>8</b>	<b>Storage</b>	<b>13</b>
<b>9</b>	<b>Technical Specifications</b>	<b>14</b>
<b>10</b>	<b>Warranty Against Defect</b>	<b>15</b>



# 1 Safety Instructions

When using electrical appliances, basic safety precautions should always be followed, including the following:



Carefully read this instruction manual before using the appliance and USB cable.

- Keep the appliance, accessories and USB cable out of reach of young children.
- This appliance is not intended for use by persons (including children) with reduced physical, sensory or mental capabilities, or lack of experience and knowledge unless they have been given supervision or instruction concerning the use of the appliance by a person responsible for their safety.
- Children should be supervised to ensure that they do not play with the Appliance and/or USB cable.
- Ensure children and babies do not play with plastic bags or any packaging materials.
- Do not disassemble the Appliance and/or USB cable. There are no user-serviceable parts inside.
- **VERY IMPORTANT:**  
Ensure that the charger (not supplied) and/or USB cable do not get wet (water splashes etc.).  
Do not use your charger or the USB cable with wet hands.  
Do not immerse the USB cable in water or other liquids or use it near sinks, baths, or showers.
- Only Charge the Appliance with the USB cable that was supplied with the Appliance.
- Only Charge the Appliance from an Extra Low Voltage Battery Charger (not supplied) with an output rating the same as indicated on the Appliance's rating label.
- Position the USB cable properly so that they will not be walked on or pinched by items placed on or against them.
- Use the Appliance, accessories, and USB cable only for its intended use. The Appliance, accessories and USB cable are intended for household use only and not for commercial or industrial use.
- Inspect the USB cable, Appliance, and accessories for damage before every use.
- Do not use the appliance if it has been dropped or if any part of the Appliance, accessories and/or the USB cable has been damaged.
- If the USB cable is damaged, call our customer service for a replacement.

- The use of accessories not intended for use with this Appliance may cause injuries to the user or damage to the Appliance, components and/or the USB cable.
- Do not sit the Appliance on other appliances, on uneven surfaces or where it could be subject to heat sources (e.g., radiators or stoves), direct sunlight, excessive dust or mechanical vibrations.

The Appliance and/or USB cable must not be charged or used outdoors if raining, not charged near water, placed near a hot gas or electrical burner, or placed in a heated oven.

- Do not place or leave near any heat sources such as radiators, heat registers, stoves, or other apparatus that produce heat.
- Do not operate or charge the Appliance underneath or near flammable or combustible materials (e.g., curtains).
- Always switch off and unplug the USB charger cable when finished charging the appliance, during lightning storms or when unused for long periods.
- Do not cover the appliance or charger (not supplied) when charging or when in use.
- Turn off and unplug before cleaning or storing.
- Any type of servicing, apart from ordinary cleaning, must be conducted by a qualified electrical person only. There are no user-serviceable parts in this Appliance or USB cable.
- Cleaning and user maintenance shall not be made by children without supervision.
- If a third party uses this Appliance and USB cable, please supply the instruction manual with it.
- Do not misuse the USB cable. Never carry the Appliance by the USB cable or pull to disconnect it from the socket. Instead, grasp the plug and pull to disconnect.
- Do not insert or allow foreign objects to enter any openings as this may cause damage to the Appliance and/or injury to the user.
- Do not leave the Appliance running or charging unattended.
- No liability can be accepted for any damage caused by non-compliance with these instructions or any other improper use or mishandling of the Appliance and/or USB cable.
- This product has not been designed for any uses other than those specified in this manual.
- **ONLY** for domestic use. Industrial or commercial use invalidates the warranty.



## **WARNING**

Only use the USB Cable that was supplied with this Appliance.

Consumers are cautioned against trying to replace the battery. Using and/or purchasing counterfeit and/or inferior-quality batteries has the potential to cause fire, personal injury, and/or property damage. These batteries are typically found on online auction websites or from other retailers and are known to pose a potential safety risk.

Never try to charge non-rechargeable batteries as they may explode or catch on fire or cause personal injury and/or damage to property.

- Batteries may explode if disposed of in fire.
- The battery is not replaceable. Do Not open the appliance.
- Do not use or store in temperatures above 40°C.



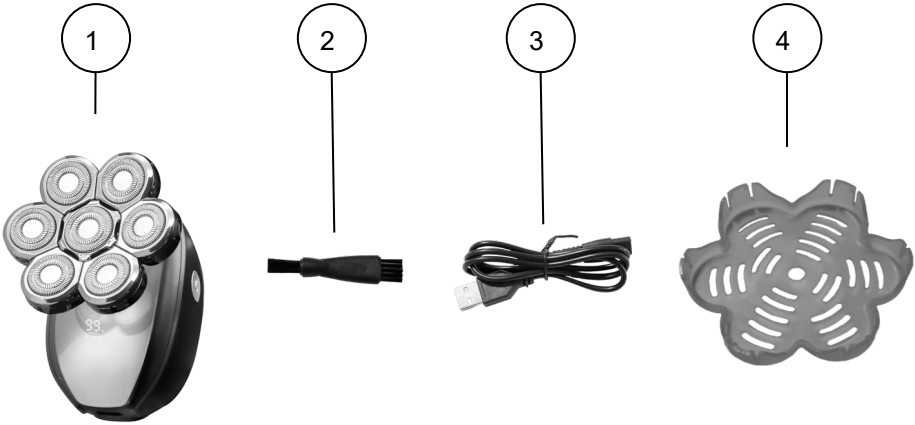
At the end of the appliance's life, it must be disposed of correctly.

Contact your local waste management authority for more information on Battery Recycling and disposal regulations in your area.

Do not dispose of electrical appliances or batteries as unsorted municipal waste, use separate collection facilities. Contact your local council for information regarding the collection systems available. If electrical appliances are disposed of in landfills or dumps, hazardous substances can leak into the groundwater and get into the food chain, damaging your health and well-being. Please contact your local council or regional authority for more information on the collection, reuse, and recycling programmes.

## **Read and Save These Instructions**

## 2 Components



1	Shaver	3	USB Cable
2	Cleaning Brush	4	Blade Cover

## 3 Instructions for Use

**NOTE:** This Shaver and its accessories are rated IPX6 waterproof for means of cleaning the shaver blades under clean warm (not hot) water only.

Refer to the Care and Cleaning section for cleaning instructions.

### 3.1 Charging the Shaver

**Read the Safety Instructions first.**

**IMPORTANT:** This Shaver contains a built-in lithium-ion battery which must only be charged using the supplied USB cable.

Always switch off and unplug the USB cable when charging is completed or when not in use.

**DO NOT allow to charge for more than 2 hours.**

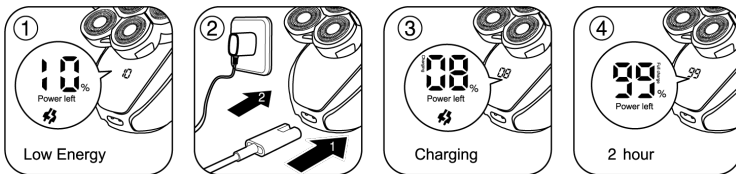


If any abnormality occurs during charging (such as a burning smell, excessive heat, or even a strange sound) immediately turn off the charger and disconnect the USB cable, then contact our service department for assistance.

**IMPORTANT: The Shaver must be fully charged until the display shows “99%” and “Full Charge” before first use.**

**Note:** the display will not show “100%” when fully charged. When the display shows “99%” and the wording “Full Charge” lights up, this indicates the battery is fully charged.

- Take the USB Cable and fully unravel it before using it to charge the Shaver.
- Plug the small end of the USB cable directly into the back of the shaver. (Refer to Fig 2)
- Plug the large end of the USB cable into your 5Vd.c. 1A USB charger (not supplied) and switch on.



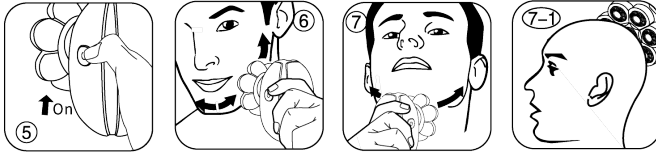
- Whilst charging, the display will illuminate with scrolling numbers where the numbers will increase as the battery charges indicating the percentage of charge. (Refer to Fig 3).
- When the display shows “10%” with the wording “Power Left”, this means there is only 10% of battery power remaining until the battery is depleted.

The indicator “plug” symbol and the number display will flash indicating low charge and a reminder to recharge the shaver. (refer to Fig 1).

- After approximately 2 hours of charge, the display will show “99” and the wording “Full Charge” will light up indicating the battery is fully charged.

## 4 Operation

- When fully charged, remove the USB plug from the shaver and the USB charger.
- Press the On /Off button located on the side of the shaver. (Refer to Fig 5).



- Ensuring your hair is clean and dry, lightly press the blades against your face, neck or scalp and move the shaver slowly around in a circular motion or whichever motion you feel is most comfortable for cutting the hair. Refer to Figs 6, 7 and 7-1)

**Note:** Shaving against the growth direction works best.

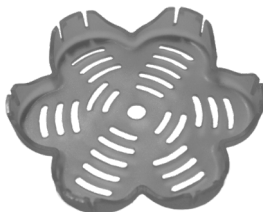
### **IMPORTANT:**

Do not attempt to shave hair that is longer than a few days growth or 2mm in length as head-shaving is designed to maintain the shaved appearance and this look can be achieved by daily use if desired.

This shaver cannot shave long hair down to the scalp. If your hair is longer than 2mm, you should use a hair trimmer first to cut the hair down to 2mm in length or shorter, and then use the shaver to finish off.

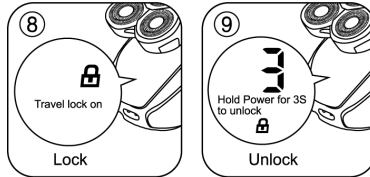
- When finished, press and release the On /Off button located on the side of the shaver. (Refer to Fig 5)

**Important:** Always attach the shaver blade cover when not in use to protect the fragile blade assembly.



## 5 Travel Lock

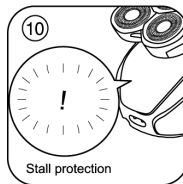
- To lock: Press and hold the On / Off button for 3 seconds then release. The “Travel Lock On” wording will illuminate and the Padlock symbol will flash 5 times indicating the travel lock is activated. (Refer to Fig 8).



- To unlock: Press and hold the On / Off button for 3 seconds. The display will count down from 3 – 2 - 1 and will unlock and turn the shaver on. At this time, release the On / Off button. (Refer to Fig 9)

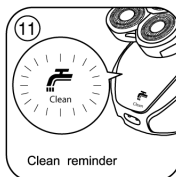
## 6 Intelligent Display

- If the Shaver is overloaded (worked too hard), it will automatically turn off and the display will show “Stall Detection” by means of a “!” flashing six times and then turning off (refer Fig 10).



- At this time, clean the shaver and allow it to cool before using it again.
- If the Water Tap icon flashes with the word “Clean”, this means the shaver head needs cleaning. (Refer to Fig 11).

**Note:** This function is time-based (approx. 15 minutes of running time) and is meant as a visual warning to prompt you to clean the shaver.



# 7 Care and Cleaning

## 7.1 Cleaning

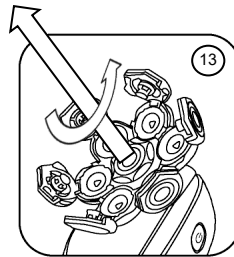
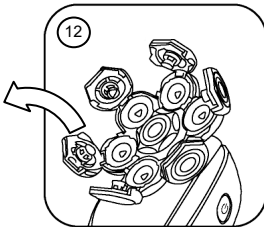
To ensure optimal shaving efficiency, the shaver must be cleaned regularly.

**IMPORTANT: Do Not** use flammable liquids, chemicals, abrasive creams, steel wool or scouring pads for cleaning.

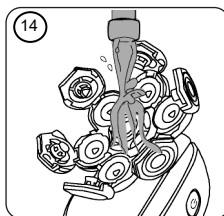
**DO NOT** press on the top of the shaving blade surfaces as you will damage them.

The easiest and most sanitary way to clean the product is to wash the shaver head part and the cut hair container with fresh warm (not hot) water each time after use.

- To do this: Turn off the Shaver and unplug it.
- Pry open each blade section one by one and then swing them fully open to expose the inner cut hair container. (Refer to Fig 12)
- Repeat for the other five blade sections then remove the Centre Blade Section. To do this, grasp the centre blade surround and rotate anti-clockwise to unclip, then lift up and away. (Refer to Fig 13)



- You can brush out the cut hair with the small cleaning brush supplied and then rinse the shaver head parts, the Blade Sections and the cut hair container for a minute or so in running water until the cut hairs have been washed away. (Refer to Fig 14)



**IMPORTANT:** **DO NOT** use high-pressure water or compressed air to try and clean as you will damage the Shaver.

**DO NOT** wipe the Blade Sections with a towel or paper tissues as this will cause damage to the shaver head.

Only use running tap water to rinse away the cut hair and allow the Blade Sections to dry naturally before re-assembly.

- When clean, gently shake the excess water from the Shaver.
- Allow the Shaver and Blade sections to sit and air dry naturally, and only when dry, refit the Centre Blade Section in the reverse method of disassembly.

Ensure it is rotated clockwise and locked in place.

- Close the six blade sections ensuring they latch shut.
- The other accessories can also be cleaned using running tap water and then allowed to air dry naturally.

**NOTE:** Cleaning and user maintenance shall not be made by children without supervision

## 7.2 Lubrication

The Head Shaver will need periodic lubrication to allow the blades to run smoothly.

Use a drop of sewing machine oil every few months of use directly onto the trimming blades.

## 8 Storage

- Switch off and unplug the Shaver.
- Coil the USB cable loosely. Do not kink or pull the cable tight.
- Ensure all parts are completely dry.
- Fit the plastic Shaver Blade Cover to prevent damage.
- Store your Shaver and accessories in a cool, dry location.

## 9 Technical Specifications

**Input:** 5Vd.c. 1A

**Battery Type:** Li-ion 3.7V 600mAh

**Charge Time:** approx. 2hr

**Working Time:** approx. 1hr

# 10 Warranty Against Defect

## 12 Month Warranty

Thank you for your purchase.

Your new product is warranted to be free from defects in materials and workmanship for the period stated above, from the date of purchase, provided that the product is used in accordance with accompanying recommendations or instructions where provided. This warranty is in addition to your rights under the Australian Consumer Law. For New Zealand customers, this warranty is in addition to statutory rights observed under New Zealand legislation.

We will provide you with your choice of a refund, repair (where possible) or exchange (availability dependent) for this product if it becomes defective within the warranty period. The business will bear the reasonable expense of claiming the warranty. This warranty will no longer apply where the defect is a result of alteration, accident, misuse, abuse or neglect.

Please retain your receipt as proof of purchase and contact our Customer Service Centre as listed below, for the entity you purchased this product from, for any difficulties with your product. Warranty claims and claims for expenses incurred in returning this product can be addressed to the respective Customer Service Centre.

Our goods come with guarantees that cannot be excluded under the Australian Consumer Law. You are entitled to a replacement or refund for a major failure and compensation for any other reasonably foreseeable loss or damage. You are also entitled to have the goods repaired or replaced if the goods fail to be of acceptable quality and the failure does not amount to a major failure.

Contact for Kmart purchases	Contact for Target purchases
Kmart Australia Ltd. C/- Customer Service Centre, 690 Springvale Road, Mulgrave Vic 3170 Customer Service: 1800 124 125 (Australia) or 0800 945 995 (New Zealand) or via Customer Help at <a href="http://kmart.com.au">kmart.com.au</a>	Target Australia Pty Ltd. C/- Customer Service Centre, 2 Kendall Street, Williams Landing, Vic, 3027 Customer Service: 1300 753 567 or via Customer Help at <a href="http://target.com.au/help/contact-us">target.com.au/help/contact-us</a>

**IMPORTANT! For all technical queries or difficulties in operating the product and for spare parts, contact H.E. Group customer service 1300 105 888 (Australia) and 09 8870 447 (New Zealand).**

