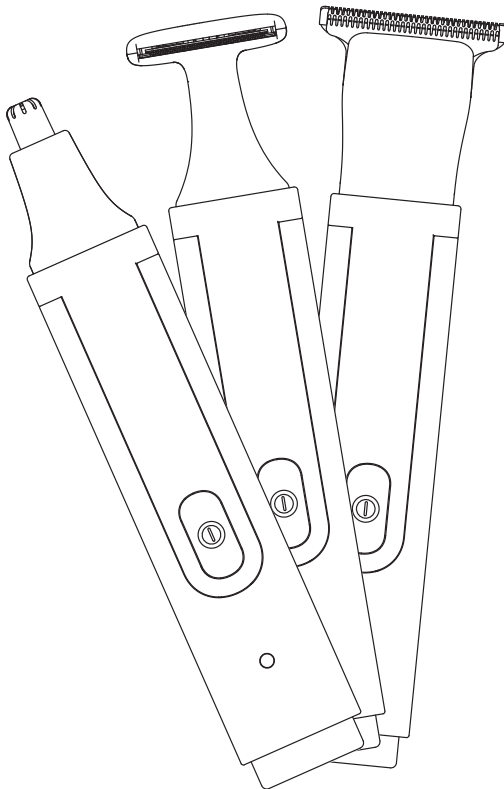


anko

Long Handled Trimmer User Manual



Model No.: MR-8112
Rev 1

Note: This appliance's specifications and/or components are subject to change without prior notice.

1	Safety Instructions	3
2	Components	6
3	Instructions for Use	6
3.1	Charging the Appliance	6
4	Operation	8
4.1	Speed Settings	8
4.2	Auto Off	8
4.3	Travel Lock	8
4.4	Cleaning Reminder	9
4.5	Haircut Trimmer	9
4.6	Nose Trimmer	10
4.7	Body Hair Trimmer	11
4.8	Extension Handle for the Body Hair Trimmer	12
5	Care and Cleaning	13
5.1	Cleaning the Trimmer Heads and Nose Trimmer	13
5.2	Cleaning the Combs	13
5.3	Lubrication	14
6	Storage	14
7	Technical Specifications	14
8	Warranty Against Defect	15

1 Safety Instructions

When using electrical appliances, basic safety precautions should always be followed, including the following:



Carefully read this instruction manual before using the appliance and USB cable.

- Keep the appliance, accessories and USB cable out of reach of young children.
- This appliance is not intended for use by persons (including children) with reduced physical, sensory or mental capabilities, or lack of experience and knowledge unless they have been given supervision or instruction concerning the use of the appliance by a person responsible for their safety.
- Children should be supervised to ensure that they do not play with the Appliance and/or USB cable.
- Ensure children and babies do not play with plastic bags or any packaging materials.
- To protect against the risk of electric shock, do not immerse the appliance, cord or charger in water or other liquids.
- DO NOT use or store the product near sinks, baths or showers containing water or near running water.
- DO NOT use in the bath, shower, spa, pool, etc.
- Do not disassemble the Appliance and/or USB cable. There are no user-serviceable parts inside.
- **VERY IMPORTANT:**
Ensure that the charger (not supplied) and/or USB cable do not get wet (water splashes etc.).
- Do not use your charger or the USB cable with wet hands.
- Only Charge the Appliance with the USB cable that was supplied with the Appliance.
- Only Charge the Appliance from an Extra Low Voltage Battery Charger (not supplied) with an output rating the same as indicated on the Appliance's rating label.
- Position the USB cable properly so that they will not be walked on or pinched by items placed on or against them.
- Use the Appliance, accessories and USB cable only for its intended use. The Appliance, accessories and USB cable are intended for household use only and not for commercial or industrial use.

- Inspect the USB cable, Appliance and accessories for damage before every use.
- Do not use the appliance if it has been dropped or if any part of the Appliance, accessories and/or the USB cable has been damaged.
- If the USB cable is damaged, call our customer service for a replacement.
- The use of accessories not intended for use with this Appliance may cause injuries to the user or damage to the Appliance, components and/or the USB cable.
- Do not sit the Appliance on other appliances, on uneven surfaces or where it could be subject to heat sources (e.g., radiators or stoves), direct sunlight, excessive dust or mechanical vibrations.

The Appliance and/or USB cable must not be used outdoors if raining, near water, placed near a hot gas or electrical burner or placed in a heated oven.

- Do not place or leave near any heat sources such as radiators, heat registers, stoves, or other apparatus that produce heat.
- Do not operate or charge the Appliance underneath or near flammable or combustible materials (e.g., curtains).
- Always switch off and unplug the USB charger cable when finished charging the appliance, during lightning storms or when unused for long periods.
- Do not cover the appliance or charger when charging or when in use.
- Turn off and unplug before cleaning or storing.
- Any type of servicing, apart from ordinary cleaning, must be carried out by a qualified electrical person only. There are no user-serviceable parts in this Appliance or USB cable.
- Cleaning and user maintenance shall not be made by children without supervision.
- If this Appliance and USB cable are used by a third party, please supply the instruction manual with it.
- Do not misuse the USB cable. Never carry the Appliance by the USB cable or pull to disconnect it from the socket. Instead, grasp the plug and pull to disconnect.
- Do not insert or allow foreign objects to enter any openings as this may cause damage to the Appliance and/or injury to the user.
- Do not leave the Appliance running or charging unattended.

- No liability can be accepted for any damage caused by non-compliance with these instructions or any other improper use or mishandling of the Appliance, charging base and/or USB cable.
- This product has not been designed for any uses other than those specified in this manual.
- **ONLY** for domestic use. Industrial or commercial use invalidates the warranty.



WARNING

Only use the USB cable that was supplied with this Appliance.

Consumers are cautioned against trying to replace the battery. Using and/or purchasing counterfeit and/or inferior quality batteries has the potential to cause fire, personal injury, and/or property damage. These batteries are typically found on online auction websites or from other retailers and are known to pose a potential safety risk.

Never try to charge non-rechargeable batteries as they may explode or catch on fire or cause personal injury and/or damage to property.

- Batteries may explode if disposed of in fire.
- The battery is not replaceable. Do Not open the appliance.
- Do not use or store in temperatures above 40°C.



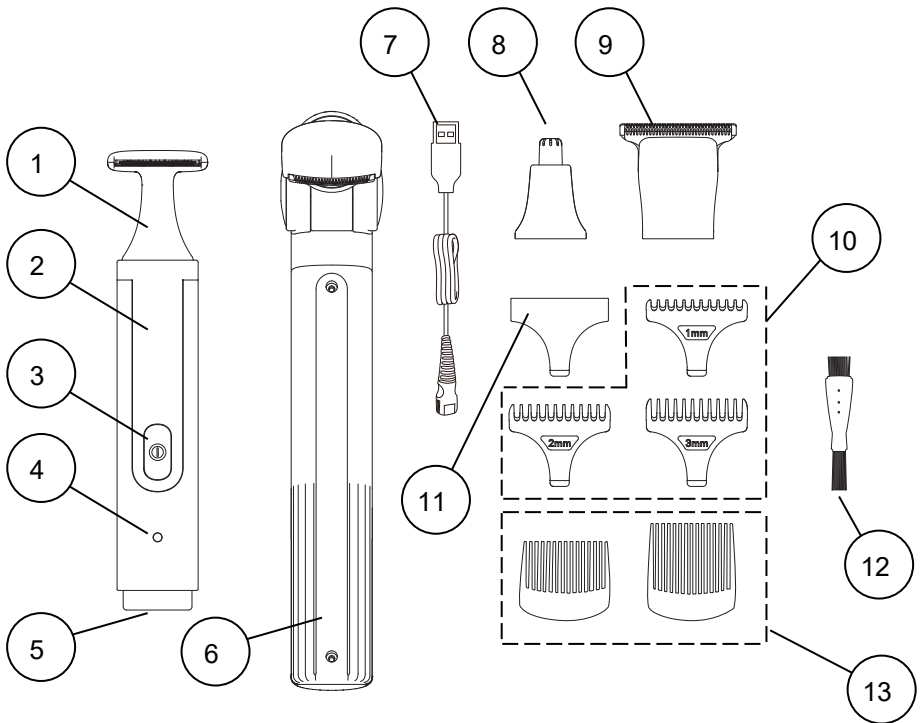
At the end of the appliance's life, it must be disposed of correctly.

Contact your local waste management authority for more information on Battery Recycling and disposal regulations in your area.

Do not dispose of electrical appliances or batteries as unsorted municipal waste, use separate collection facilities. Contact your local council for information regarding the collection systems available. If electrical appliances are disposed of in landfills or dumps, hazardous substances can leak into the groundwater and get into the food chain, damaging your health and well-being. Please contact your local council or regional authority for more information on the collection, reuse, and recycling programmes.

Read and Save These Instructions

2 Components



1	Body Hair Trimmer	8	Nose Hair Trimmer
2	Main Body	9	Haircut Trimmer Head
3	On / Off Button Switch	10	Haircut Trimmer Height Combs
4	Indicator Light	11	Haircut Trimmer Blade Cover
5	Charging Port	12	Cleaning Brush
6	Extension Handle	13	Body Hair Trimmer Height Combs
7	USB Charging Cable		

3 Instructions for Use

3.1 Charging the Appliance

Read the Safety Instructions first.

IMPORTANT: This Appliance contains a built-in lithium-ion battery which must only be charged using the supplied USB cable.

Always switch off and unplug the USB cable when charging is completed or when not in use.

Do not leave the Appliance running or charging unattended.

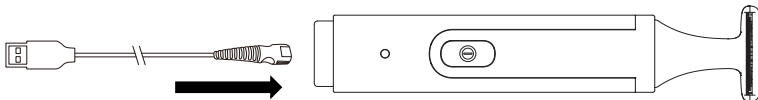
DO NOT allow to charge for more than 2 hours.

Normal charge takes approximately 1.5 hours.

If any abnormality occurs during charging (such as a burning smell, excessive heat or even a strange sound) immediately turn off the charger and disconnect the USB cable, then contact our service department for assistance.



IMPORTANT: The Appliance must be fully charged before first use.

- Take the USB Cable and fully unravel it before using it to charge the Appliance.
- Plug the small end of the USB cable directly into the bottom of the appliance.



Note: This small plug can only be inserted in one direction. If you cannot push the plug in, rotate it 180° and then try again.

- Plug the large end of the USB cable into your 5Vd.c. 1A USB charger (not supplied) and switch on.
- The Red Indicator Light will illuminate indicating the battery is charging.
- When fully charged, the Red light will change to a Green Light.

State	Indicator	Illustration
Charging	Red light in on	
Fully charged	Green light is on	

- Unplug the charging cable when fully charged.

NOTE: The Trimmer cannot be used whilst charging.

4 Operation



4.1 Speed Settings

The trimmer has two speed settings, Low and High.

Press the On/Off button and the Trimmer will start at a Low Speed indicated by the Green Indicator Light Illuminating.

Press the On/Off button again and the Trimmer will shift to High Speed indicated by the Green Indicator Light Flashing.

Press the On/Off button again and the Trimmer will turn off.

State	Indicator	Illustration
Low speed	Green light is on	
High speed	Green light flashes	

4.2 Auto Off

The Trimmer has an “Auto Off” feature which will automatically turn the trimmer off after approximately 15 minutes of constant running time.

NOTE: If it turns off automatically, you need to wait for approximately 1 minute before you can turn it back on.


This is to prevent the trimmer from overheating.

4.3 Travel Lock

The Trimmer has a “Travel Lock” feature which you can turn on to prevent accidental activation during your travels.

To turn on the Lock, Press and hold the On/Off button for approximately 2 seconds and the Trimmer will shut down and lock.

If you press the button whilst in the Locked State, the Red Light will flash.

State	Indicator	Illustration
Lock state	Red light flashes	


To Unlock, Press and hold the On/Off button for approximately 2 seconds and the Trimmer will unlock and start up.

4.4 Cleaning Reminder

After approximately 1 hour of accumulated use, the Clean Reminder Indicator lights will illuminate alternating between Red and Green.

This is to remind you that the Shaver Heads and Nose Trimmer attachments must be cleaned and lubricated. (refer to the section in this manual “Care and Cleaning”)

The only way to turn off the alternating Red and Green lights is to manually turn off the trimmer.

State	Indicator	Illustration
Clean reminder	Red and green lights will flash alternately	

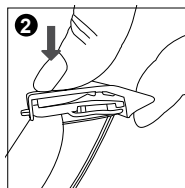
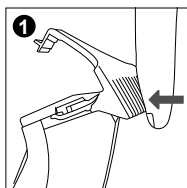
4.5 Haircut Trimmer

The appliance comes with a large Haircut Trimmer attachment along with three various height comb attachments for varying the trim height.

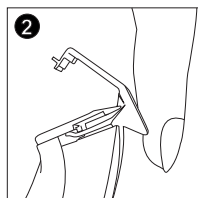
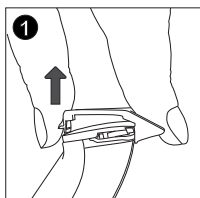
This attachment can be used for trimming sideburns, head hair, moustaches, beards, eyebrows, neck hair, etc.

You can attach any of the Short Finger Height Combs that you require.

- To do this, hook the comb over the front of the trimmer blade, then rotate it backwards, then push down on the back of the comb until it clicks in place.



- To remove, lift the small tab on the back of the comb and swing up and forward.



- To use the Trimmer:

Once the desired hair trimmer Comb size is fitted, press the On / Off button to turn On in the default Low Speed (press again for High Speed if required), then in a scooping motion move the comb through the hair against the growth of hair working your way slowing so as not to snag or pull when cutting longer hair.

When cutting hair on the top of your head work from front to back in a similar motion.

When finished, if in the High-Speed setting, press the On / Off button to turn the unit off.

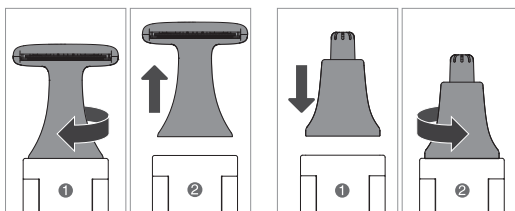
If in the Low-Speed setting, press the On/Off button twice.

4.6 Nose Trimmer

The appliance comes with a Nose Hair Trimmer attachment.

This attachment can be used for trimming the protruding hairs from your nostrils.

- To attach, first remove the trimmer head attachment by grasping the appliance body with one hand, then grasp the neck of the trimmer head and then rotate the Head clockwise whilst pulling upward.
- To fit the Nose Trimmer Attachment, locate the part into the end of the main body then rotate it anti-clockwise to lock it in place.



Remove Head

Refit Head

- To use the Nose Trimmer:

Once the Nose Trimmer attachment is fitted, remove the safety cover from the tip of the trimmer then press the On / Off button to turn On in the default Low Speed (press again for High Speed if required), then gently place the nose trimmer into one nostril and work in a circular motion around the internal area of the nostril cavity.

CAUTION: Be very careful not to push the trimmer too far up into the nasal cavity as this may become uncomfortable and/or cause injury.

When finished, if in the High-Speed setting, press the On / Off button to turn the unit off.

If in the Low-Speed setting, press the On/Off button twice.

Check and clean the nose trimmer attachment and repeat the same procedure on the other nostril.

4.7 Body Hair Trimmer

The appliance comes with a Body Hair Trimmer attachment.

This attachment can be used for trimming unwanted body hair such as on the chest, back, shoulders, etc.

Attach the Body Hair Trimmer Attachment.

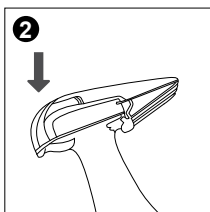
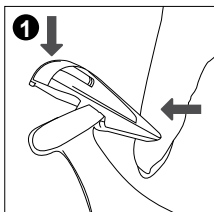
Once the Body Hair Trimmer Attachment is fitted, press the On / Off button to turn On in the default Low Speed (press again for High Speed if required), then in a back and forward motion move the comb through the hair against the growth of hair working your way slowing so as not to snag or pull when cutting longer hair.

When finished, if in the High-Speed setting, press the On / Off button to turn the unit off.

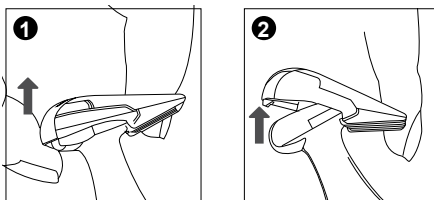
If in the Low-Speed setting, press the On/Off button twice.

If you wish to leave the hair longer, you can attach any of the two Long Finger Height Combs that you require.

- To do this, hook the comb over the front of the trimmer blade, then rotate it backwards, then push down on the back of the comb until it clicks in place.



- To remove, lift the small tab on the back of the comb and swing up and forward.



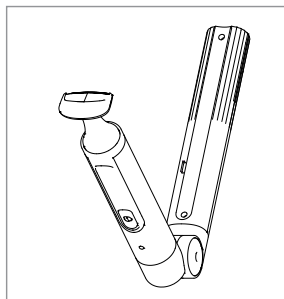
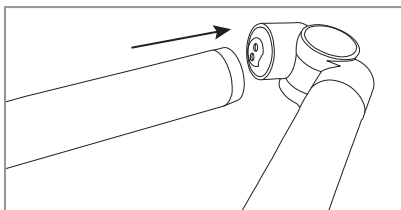
4.8 Extension Handle for the Body Hair Trimmer

The appliance comes with an extension handle for use with the Body Hair Trimmer attachment.

This helps to reach those hard-to-reach areas such as your back.

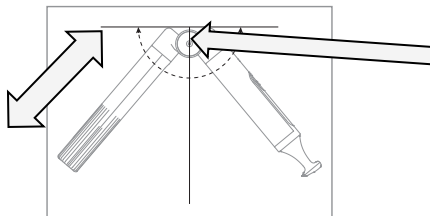
With the Body Hair Trimmer Attachment fitted to the Trimmer, attach to the extension handle by aligning the Charging Port in the end of the trimmer handle with the location post on the end of the extension handle.

Push the two components together until they lock together.

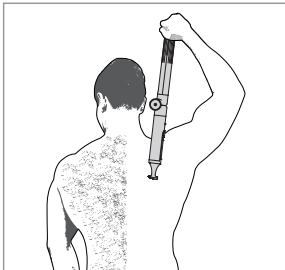


Press the angle locking button inward, adjust the extension handle's angle to your desired angle, and release the button to allow it to lock in place.

The handle can also be extended by pulling it out.



Turn on the trimmer as explained previously and then trim your back as shown below.



5 Care and Cleaning

Unplug the trimmer from the USB cable before cleaning.

NOTE: Cleaning and user maintenance shall not be made by children without supervision

5.1 Cleaning the Trimmer Heads and Nose Trimmer

To ensure optimal trimming efficiency, the trimmer attachments must be cleaned regularly.

IMPORTANT: Do Not use flammable liquids, chemicals, abrasive creams, steel wool or scouring pads for cleaning.

The easiest way to clean the trimmer is to brush off the hairs with the small cleaning brush.

For a deeper clean use gently running water to wash away the hairs whilst brushing with the small brush.

After cleaning, thoroughly dry the attachments and trimmer with a dry cloth then lubricate the cutting blades. Refer to the section on “Lubrication”.

5.2 Cleaning the Combs

The Combs can be cleaned using mild detergent and warm water.

Rinse off in clean water and dry thoroughly before use.

5.3 Lubrication

The Hair Trimmer Attachments will need periodic lubrication to allow the blades to run smoothly.

Use a drop of sewing machine oil every few months of use directly onto the trimming blades or after every time the blades are cleaned with water.

6 Storage

- Switch off and unplug the appliance.
- Coil the USB cable loosely. Do not kink or pull the cable tight.
- Ensure all parts are completely dry.
- Store your appliance and accessories in a cool, dry location.

7 Technical Specifications

Input: 5Vd.c. 1A

Battery Type: Li-ion, 3.7V, 600mAh

Charge Time: approx. 1.5hr

Working Time: approx. 1hr

8 Warranty Against Defect

12 Month Warranty

Thank you for your purchase.

Your new product is warranted to be free from defects in materials and workmanship for the period stated above, from the date of purchase, provided that the product is used in accordance with accompanying recommendations or instructions where provided. This warranty is in addition to your rights under the Australian Consumer Law. For New Zealand customers, this warranty is in addition to statutory rights observed under New Zealand legislation.

We will provide you with your choice of a refund, repair (where possible) or exchange (availability dependent) for this product if it becomes defective within the warranty period. The business will bear the reasonable expense of claiming the warranty. This warranty will no longer apply where the defect is a result of alteration, accident, misuse, abuse or neglect.

Please retain your receipt as proof of purchase and contact our Customer Service Centre as listed below, for the entity you purchased this product from, for any difficulties with your product. Warranty claims and claims for expenses incurred in returning this product can be addressed to the respective Customer Service Centre.

Our goods come with guarantees that cannot be excluded under the Australian Consumer Law. You are entitled to a replacement or refund for a major failure and compensation for any other reasonably foreseeable loss or damage. You are also entitled to have the goods repaired or replaced if the goods fail to be of acceptable quality and the failure does not amount to a major failure.

Contact for Kmart purchases	Contact for Target purchases
Kmart Australia Ltd. C/- Customer Service Centre, 690 Springvale Road, Mulgrave Vic 3170 Customer Service: 1800 124 125 (Australia) or 0800 945 995 (New Zealand) or via Customer Help at kmart.com.au	Target Australia Pty Ltd. C/- Customer Service Centre, 2 Kendall Street, Williams Landing, Vic, 3027 Customer Service: 1300 753 567 or via Customer Help at target.com.au/help/contact-us

IMPORTANT! For all technical queries or difficulties in operating the product and for spare parts, contact H.E. Group customer service 1300 105 888 (Australia) and 09 8870 447 (New Zealand).

