

Tiny Terrace

OUTDOOR LIVING HOUSE

DIY

14+ years



 **WARNING:**
CHOKING HAZARD - SMALL PARTS.
NOT FOR CHILDREN UNDER 3 YEARS.

THIS PRODUCT DOES NOT INCLUDE A LIGHT FEATURE AS SHOWN IN THIS IMAGE.

Contents

Name	Material package	Page
Frame	Package A+Package B+ Printing paper	Page 4-6
bed	Package C + Package D+Printing paper	Page 6
bookcase	Package C + Printing paper	Page 7
plant 1	Package E + Package F+ Printing paper	Page 7-8
Bedside table	Package C +Package F+ Printing paper	Page 8
footstool	Package D +Package E+ Package F+Template paper	Page 8
sofa	Package D+Package E +Package F+ Template paper	Page 9-10
End table	Package B +Package D+ Package E + Template paper + Printing paper	Page 10
plant 2	Package B+Package E+Printing paper	Page 10-11
plant 3	Package E +Printing paper	Page 11-12
plant 4	Package E +Printing paper	Page 12
outdoor seating	Package d + Package f + Printing paper	Page 12
flower shelf	Package D +Package E+Package F+ Printing paper	Page 13
book	Printing paper	Page 13
Street lamp	Package F + Printing paper	Page 14
computer	Package E + Printing paper	Page 14
component placement	Package A +Package B+ Package C +Package D+Package E Package F+Template paper+ Printing paper	Page 14

Assembly Overview

Tips for Assembly

1. Pictures shown on the package may be slightly different from the actual product.
 2. Place remaining materials back into the original bag until the installation is complete.
(Avoids materials getting lost during installation)
 3. Not too much glue should be applied. If so, the drying time will be extended
 4. Children must assemble under the guidance of adults in case of swallowing
 5. All dimensions within the instruction are shown in millimeters (mm)
 6. Find the part you need according to material list and the 1: 1 part illustration paper (for wooden parts). Check its number and size carefully before assembling. See Part Number Explanation.
 7. Note which bags the parts are kept in based on the Material List when assembling and taking them out to use.
-

Glue

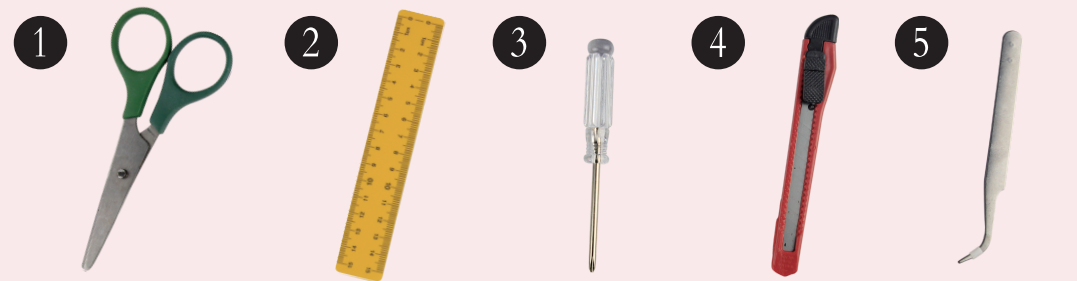


Liquid Glue

PVA Glue

(Both glue types can be used on all steps. Liquid glue can dry faster. Liquid glue is used to glue large wooden parts and other materials. PVA glue is to be used on lighter materials.)

Tools excluded



Scissors

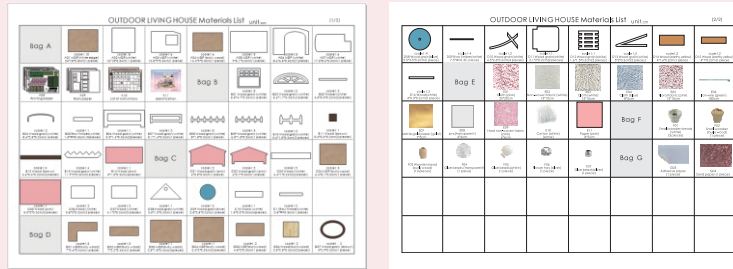
Ruler

Screw Driver

Stanley Knife

Tweezers

Thumbnail of material list(reference only)



Thumbnail of printing paper&template paper(reference only)



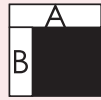
Symbol description used



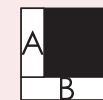
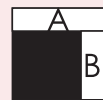
Install parts
in the opposite
direction



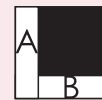
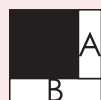
Install the same
parts on both
sides



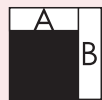
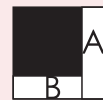
Pay attention to the direction
of installation material B
stick to material A



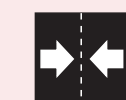
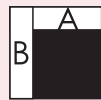
Pay attention to the direction
of installation material A
stick to material B



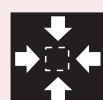
Pay attention to the direction
of installation material B
stick to material A



Pay attention to the direction
of installation material A
stick to material B



fold double edge
to center dotted
line



Fold four sides
to the middle

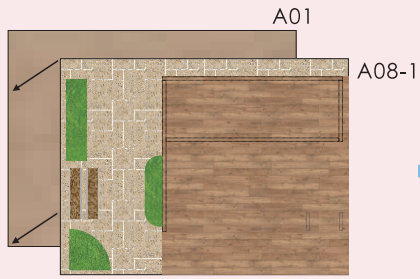


Fold in half
according
to dotted line

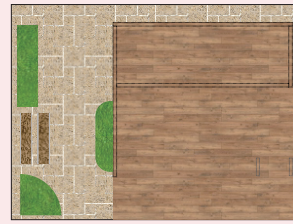


combination part
according 1 2 3 and so on.

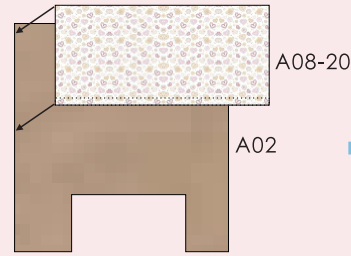
Frame



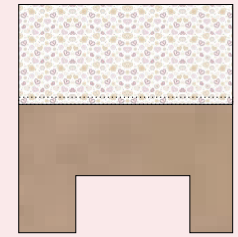
Glue A08-1 to A01



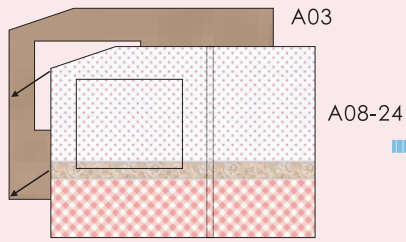
A01



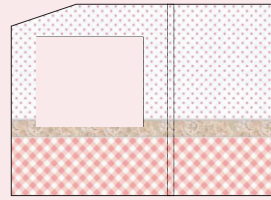
Glue A08-20 to A02



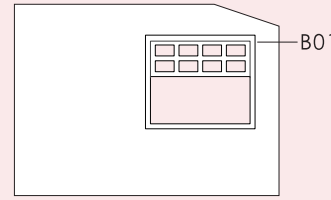
A02



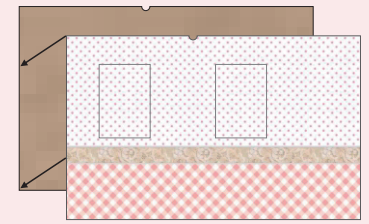
Glue A08-24 to A03 and crop the window position



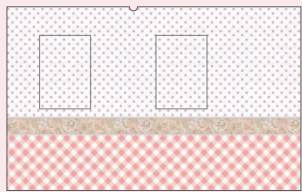
A03(The right side)



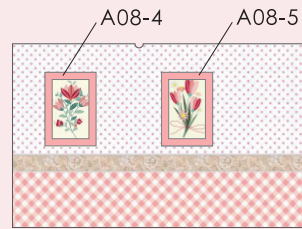
Glue B01 to the back of A03 as shown



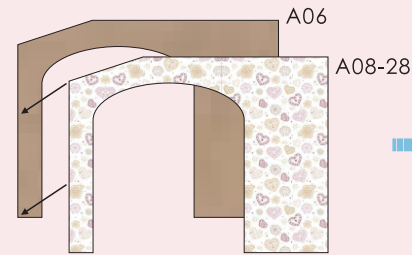
Glue A08-12 to A04 and crop out the window position



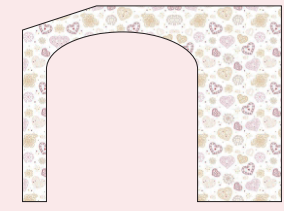
A04



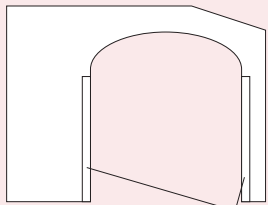
Glue A08-4 and A08-5 inside the border of A08-12 as shown



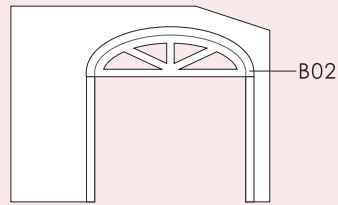
Glue A08-28 to A06 and cut out the door position



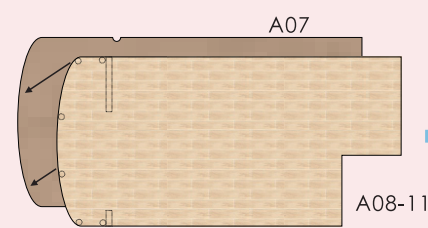
A06(The right side)



Glue B03 to the back of A06 as shown



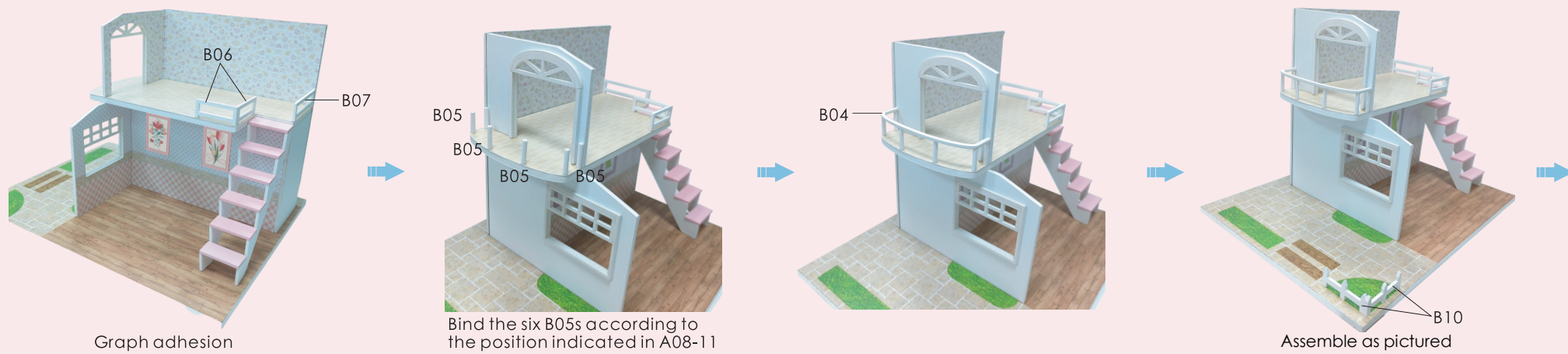
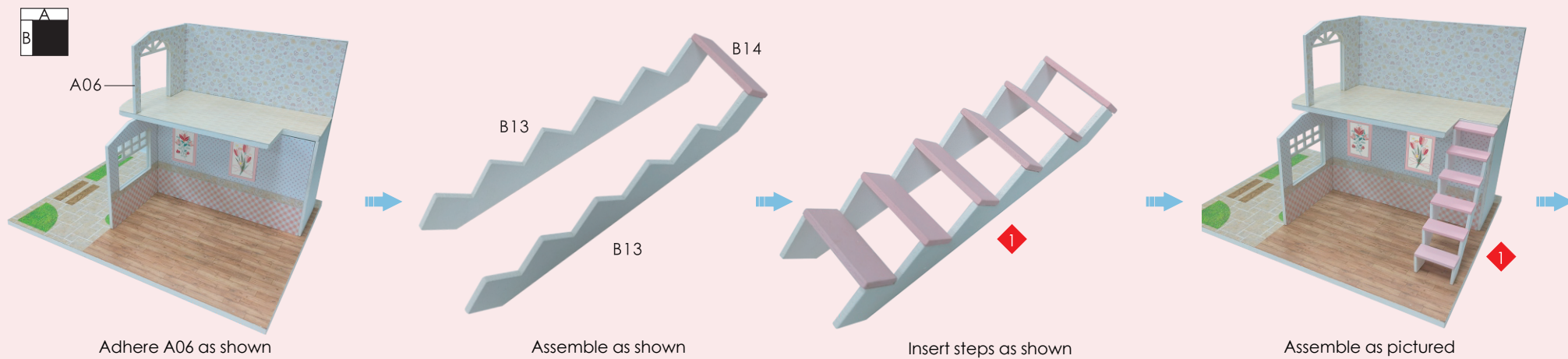
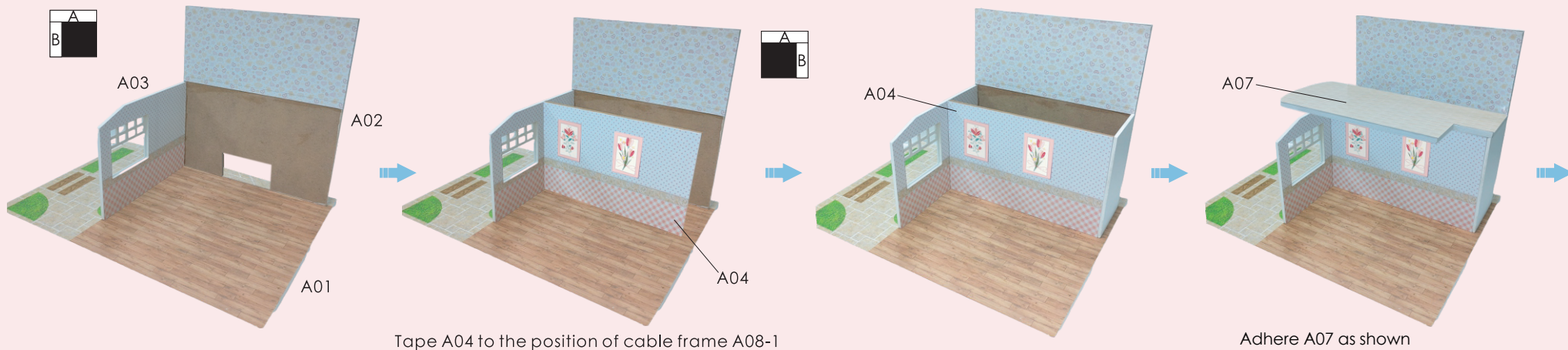
Graph adhesion

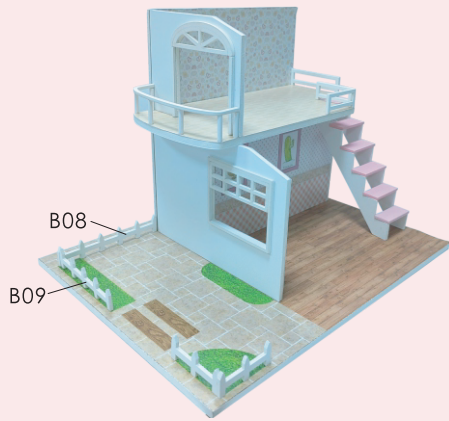


Graph adhesion



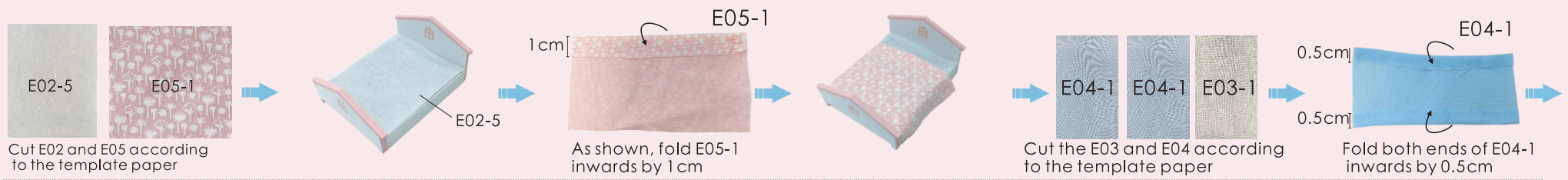
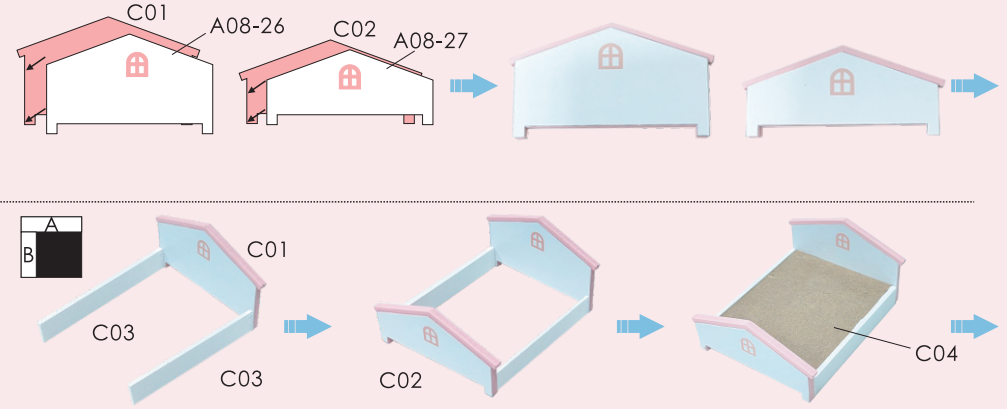
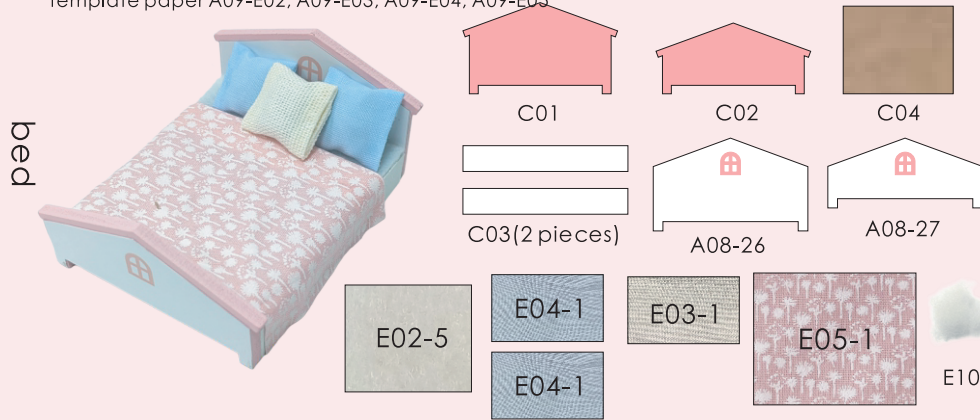
A07



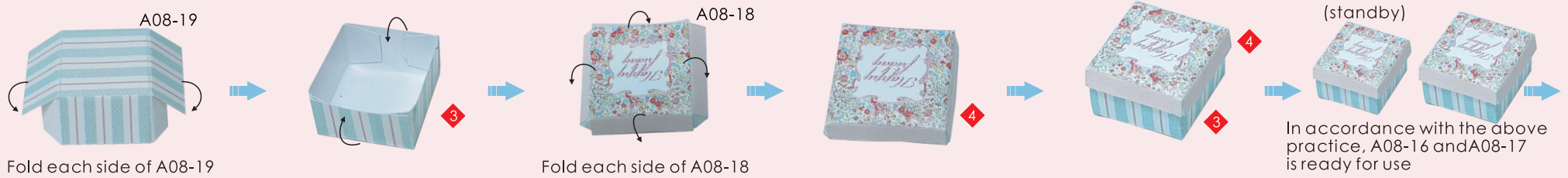
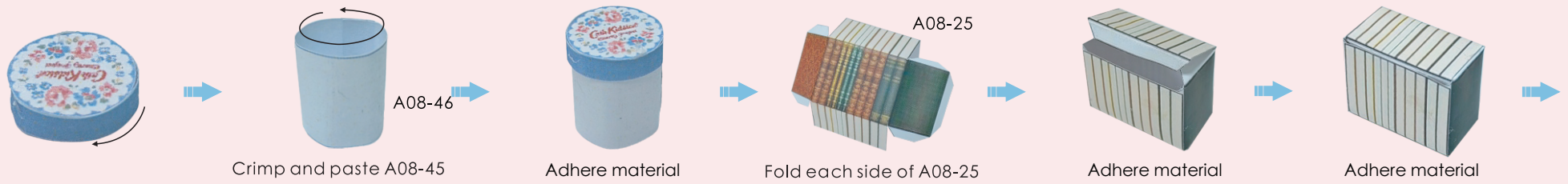
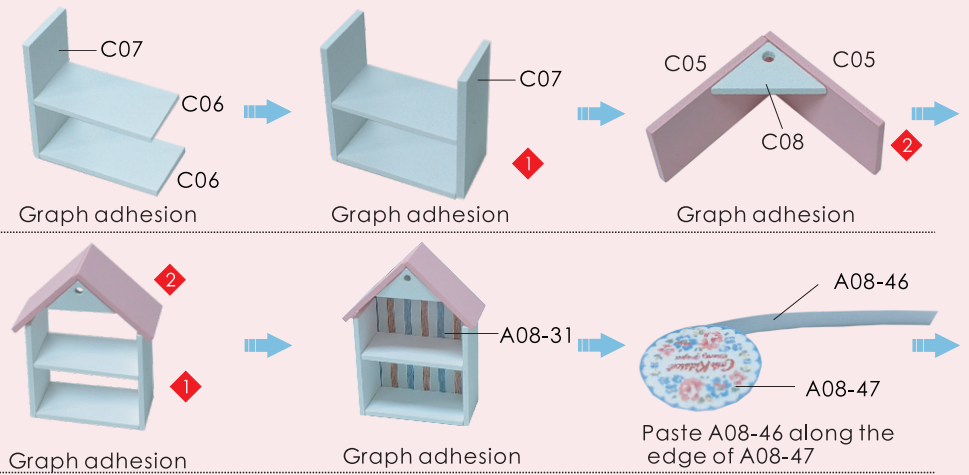
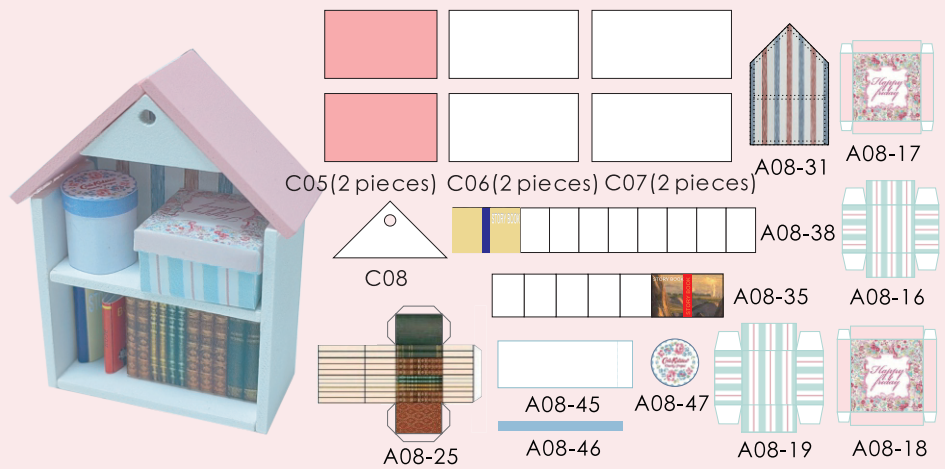


Adhere all components as shown

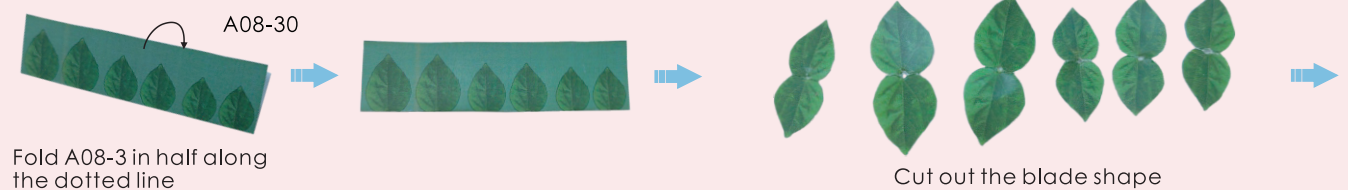
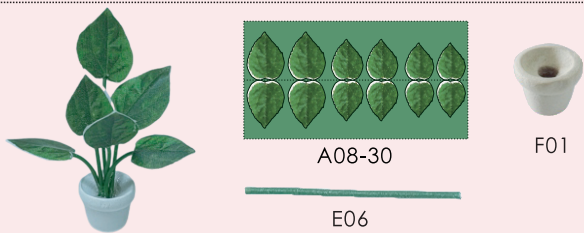
Before production, cut E02, E03, E04 and E05 according to the template paper A09-E02, A09-E03, A09-E04, A09-E05

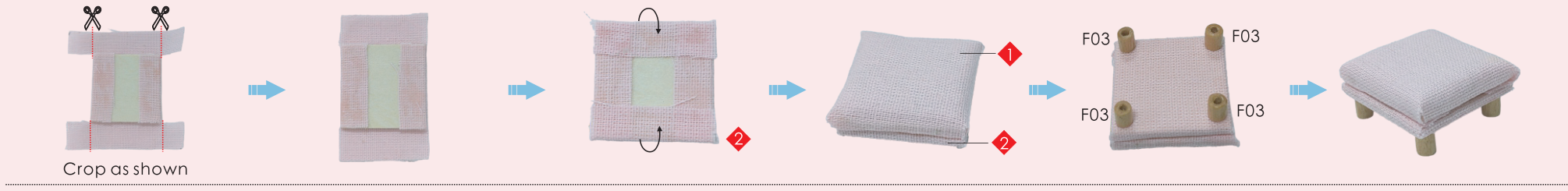
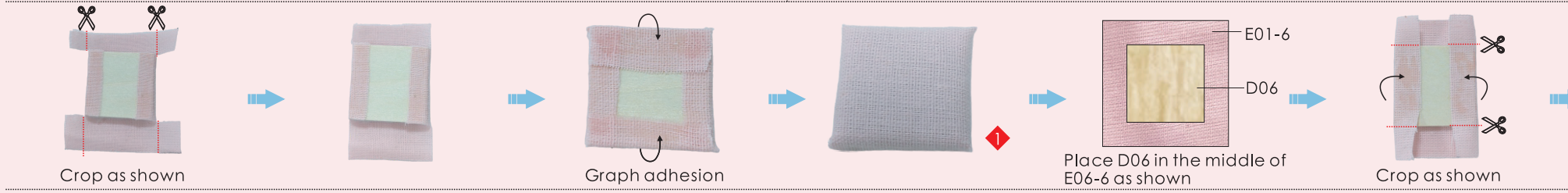
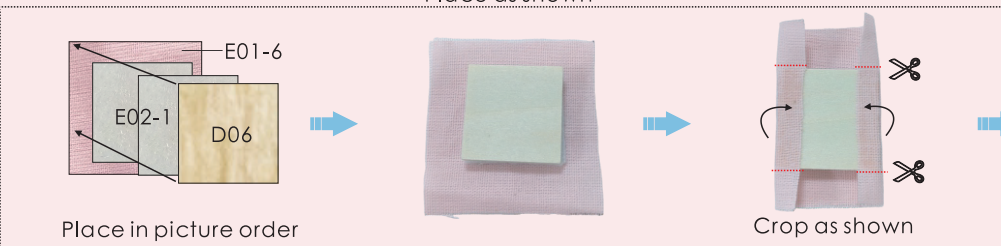
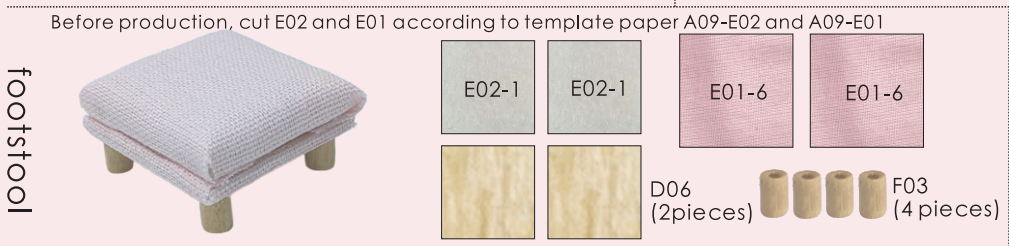
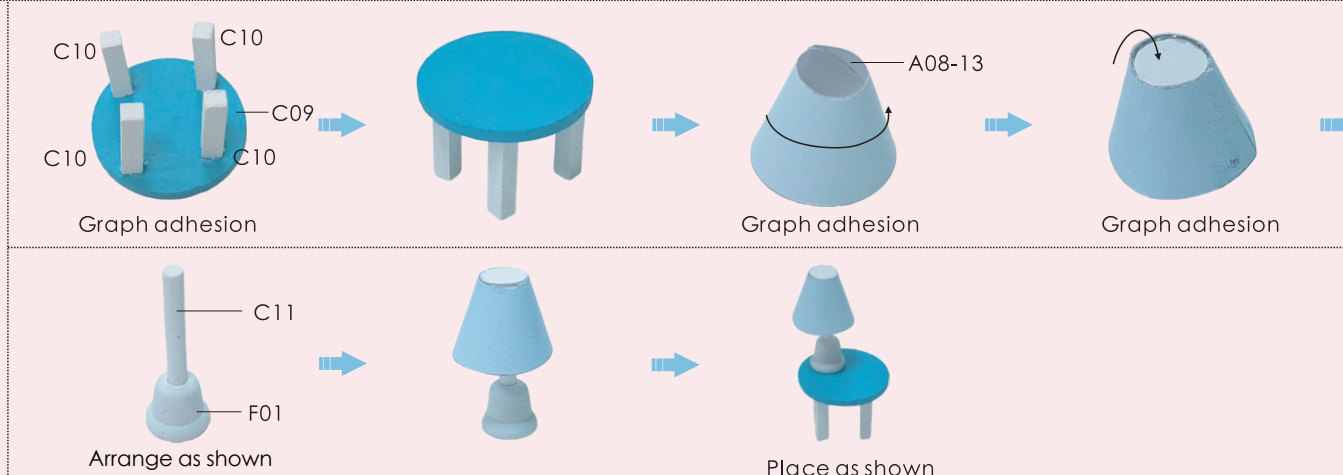
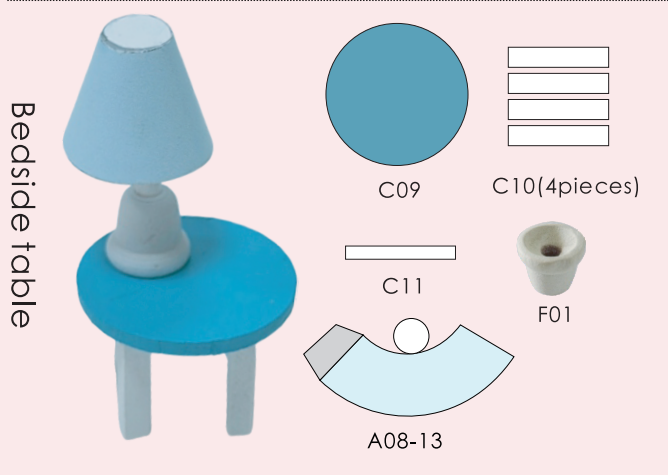
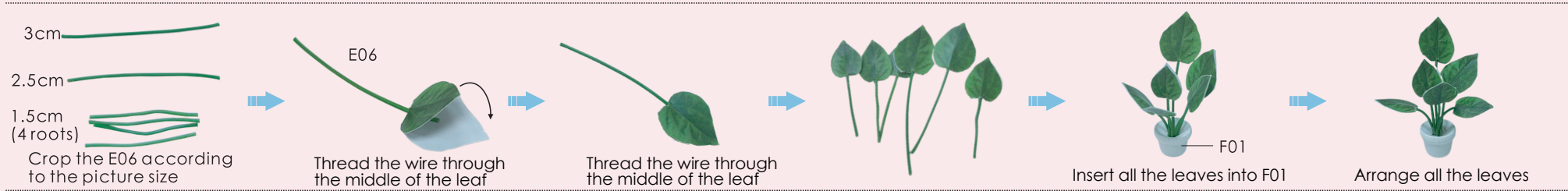


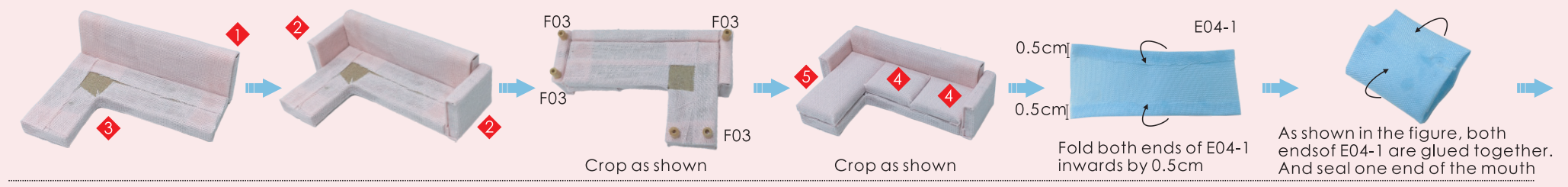
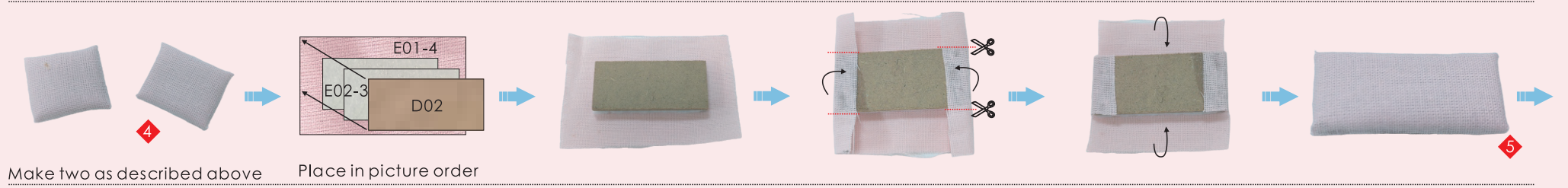
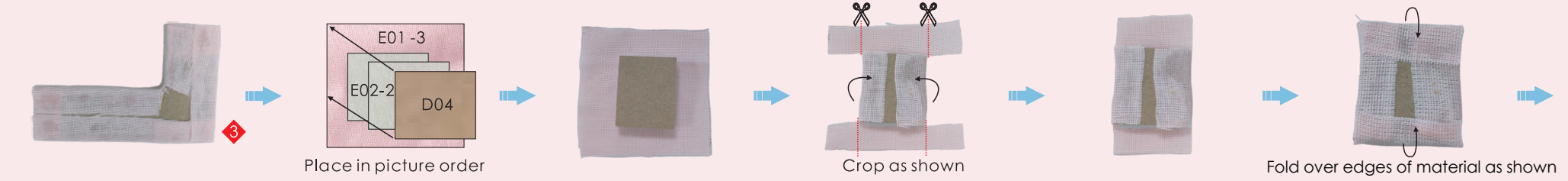
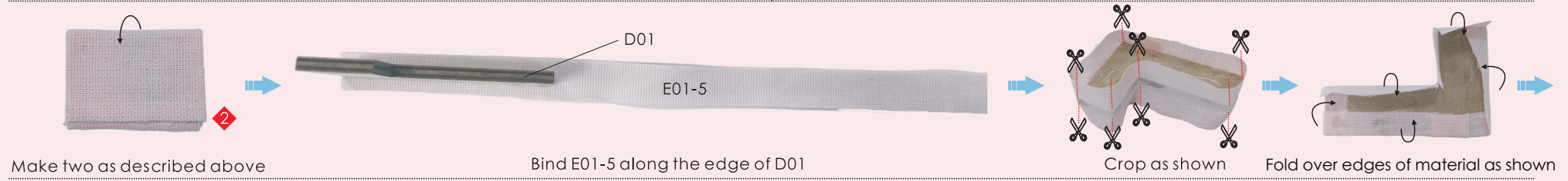
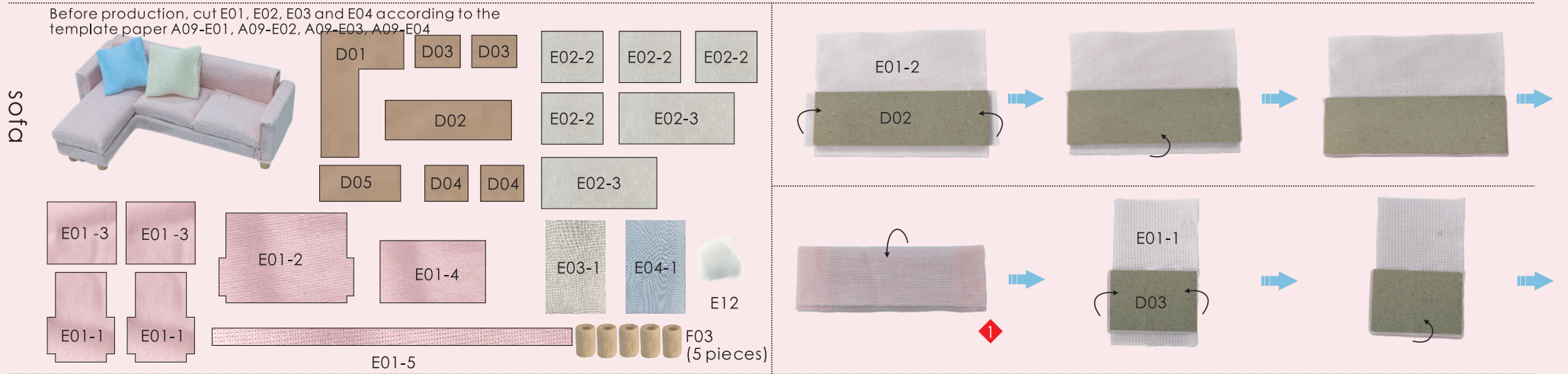
bookcase



plant 1









Insert cotton into the other end and seal

Make two throw pillows as described above

Place as shown

End table

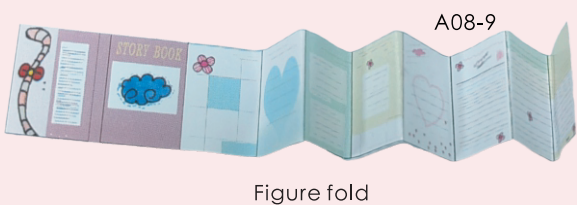
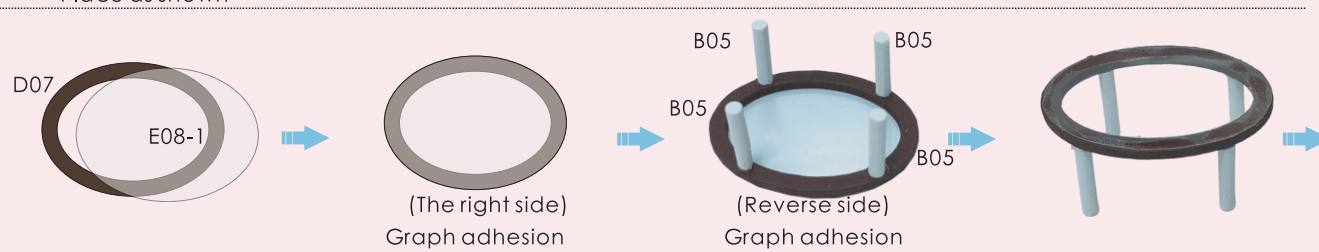
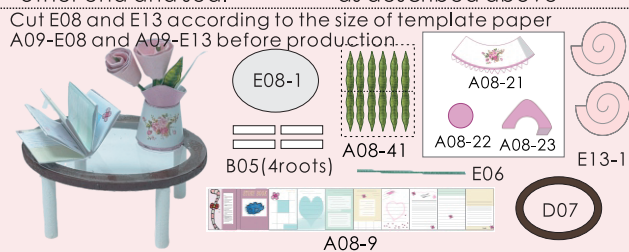


Figure fold

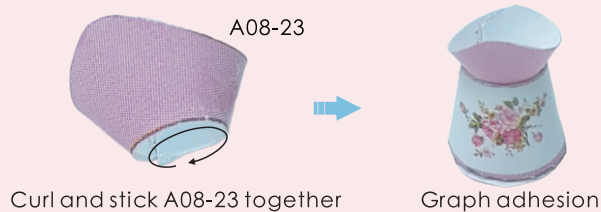


Figure fold

Curl and stick A08-21 together



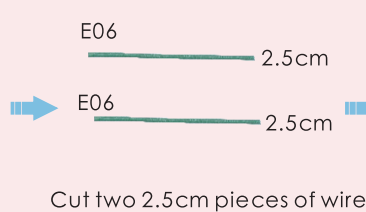
Graph adhesion



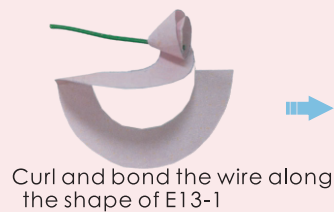
Curl and stick A08-23 together



Graph adhesion



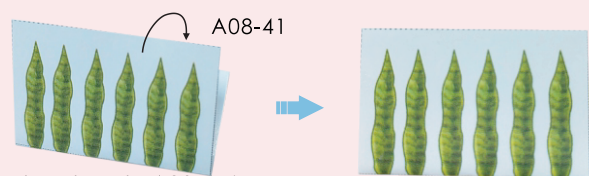
Cut two 2.5cm pieces of wire



Curl and bond the wire along the shape of E13-1



Make two flowers as described above



Fold and paste A08-41 in half along the dotted line



Cut out 3 blades

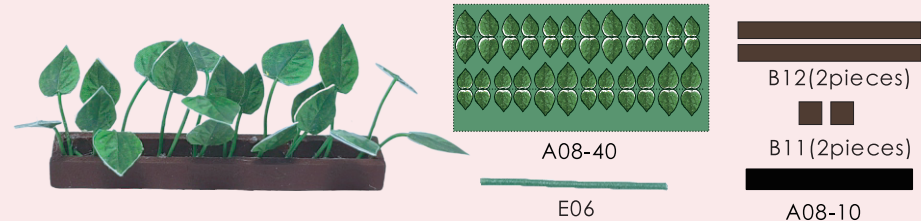


Graph adhesion



Place as shown

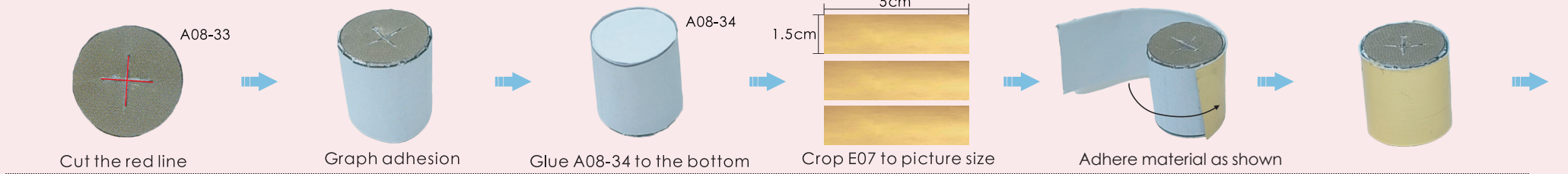
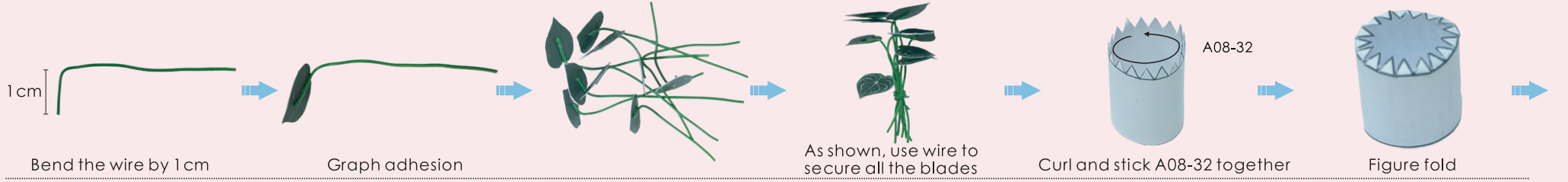
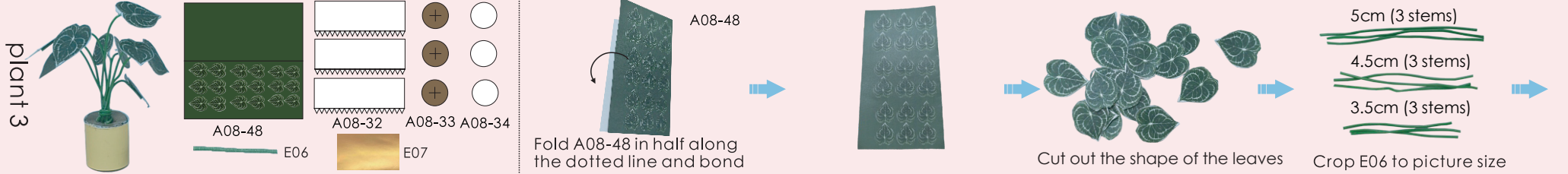
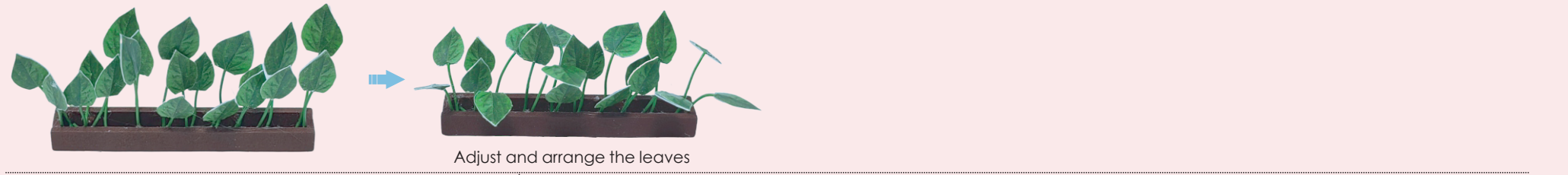
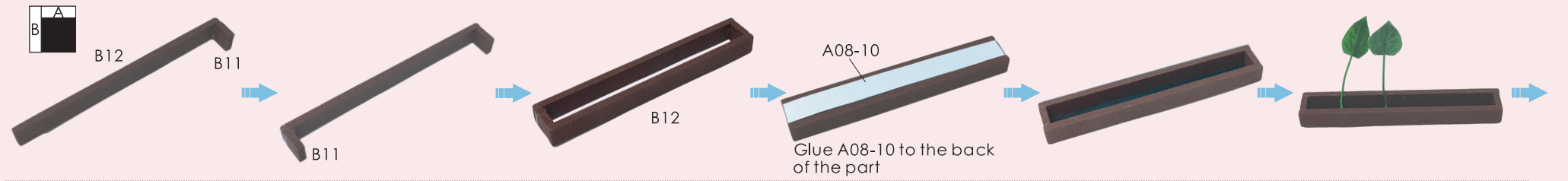
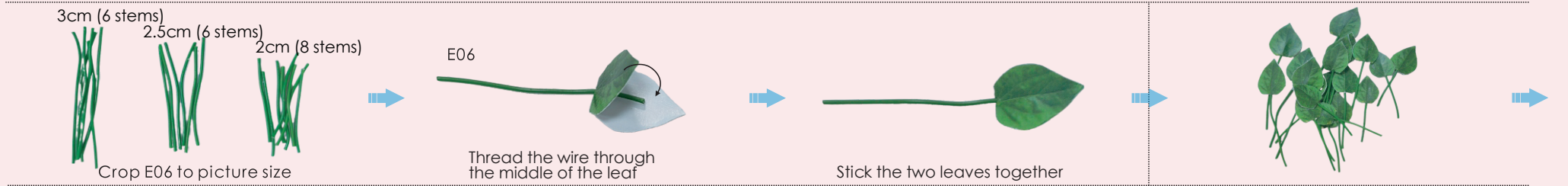
plant 2

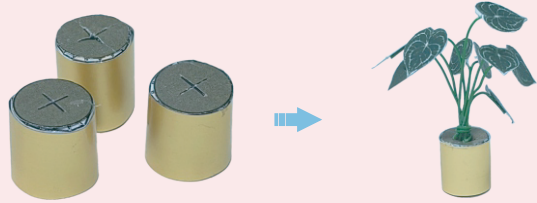


Fold A08-40 in half along the dotted line and cut



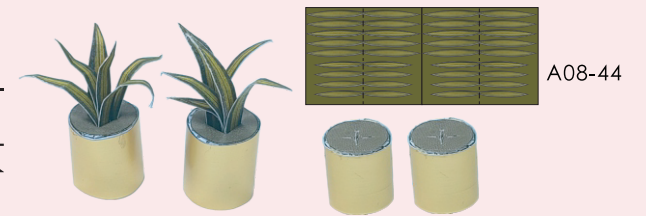
Cut out the leaf shapes



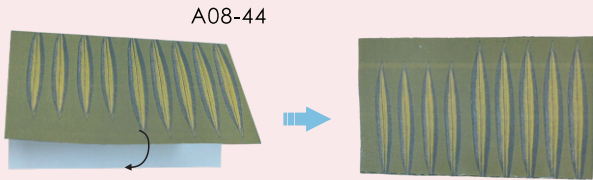


Make three as described above

plant 4

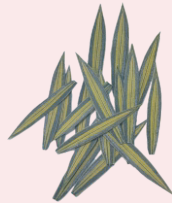


A08-44



A08-44

Fold and paste A08-44 in half along the dotted line



Cut out the leaf shapes

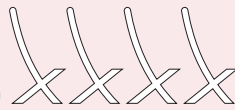


Adjust and arrange the leaves

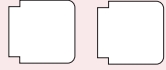


Make two as described above

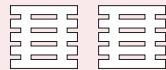
Cut E02 and E05 to the size of templates A09-E02 and A09-E05



D10 (4 pieces)



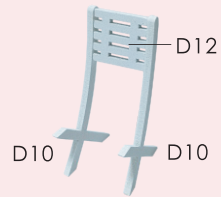
D11 (2 pieces)



D12 (2 pieces)



Outdoor seating



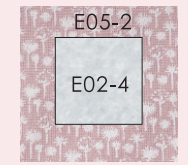
D10 D10



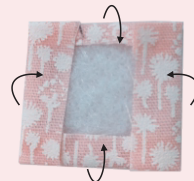
D11



Assemble 2 chairs



Graph adhesion



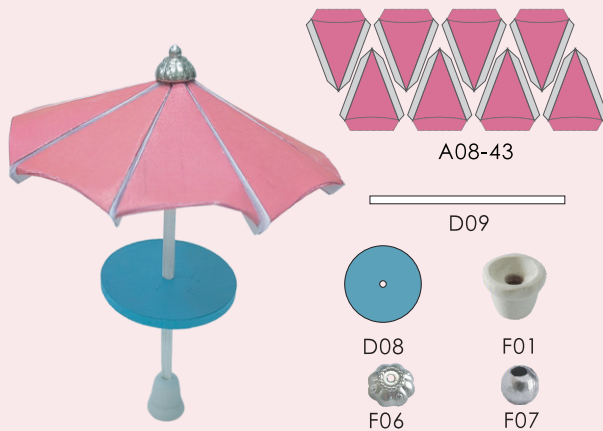
Graph adhesion



Make two as described above



sunshade



A08-43

D09



D08



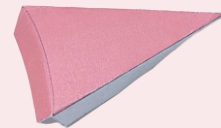
F01



F06



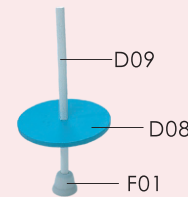
F07



Fold each side of A08-43



Assemble as shown



D09

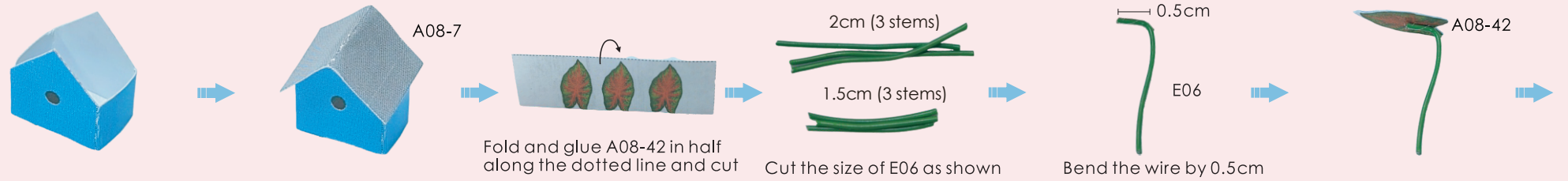
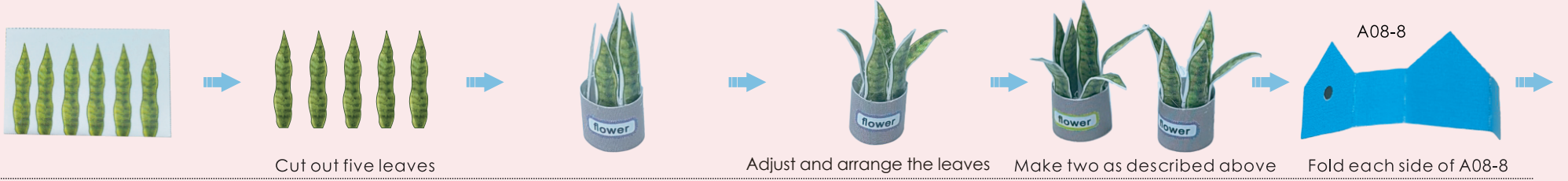
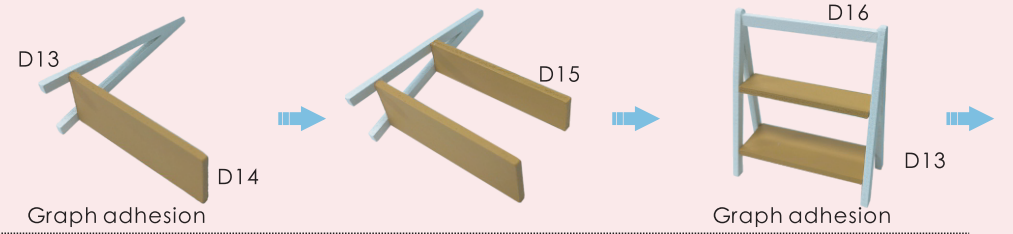
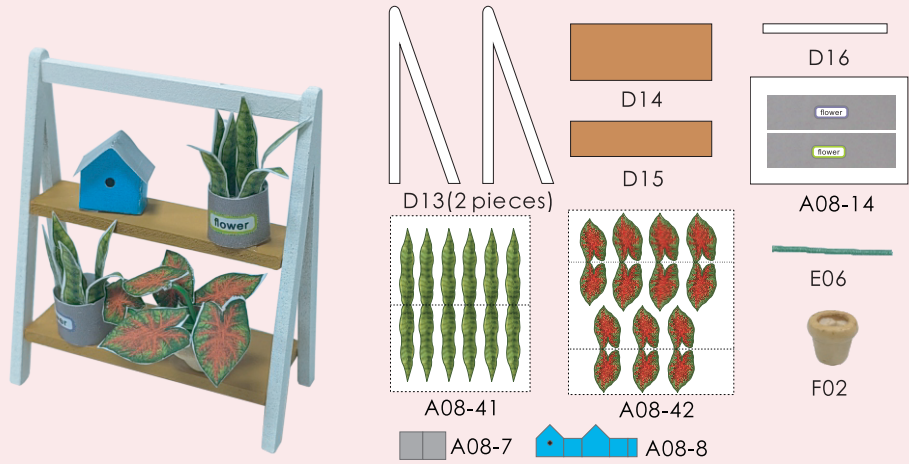
D08

F01



Assemble as shown

flower shelf



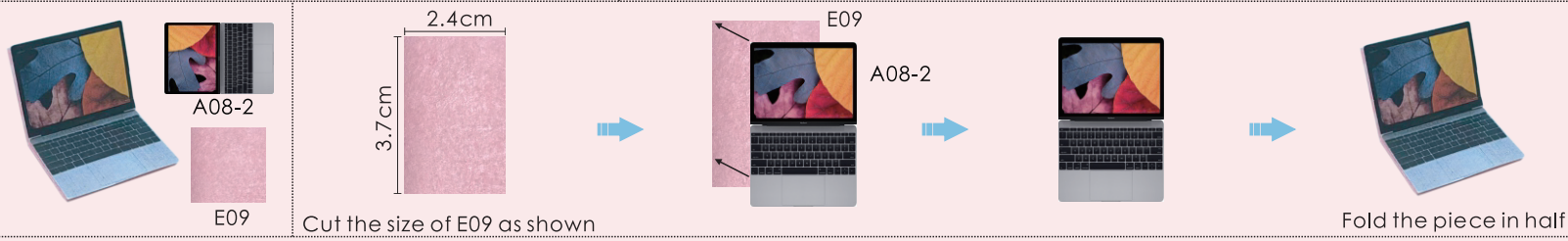
books



Street lamp



computer



Component placement

