

1

2

3

4

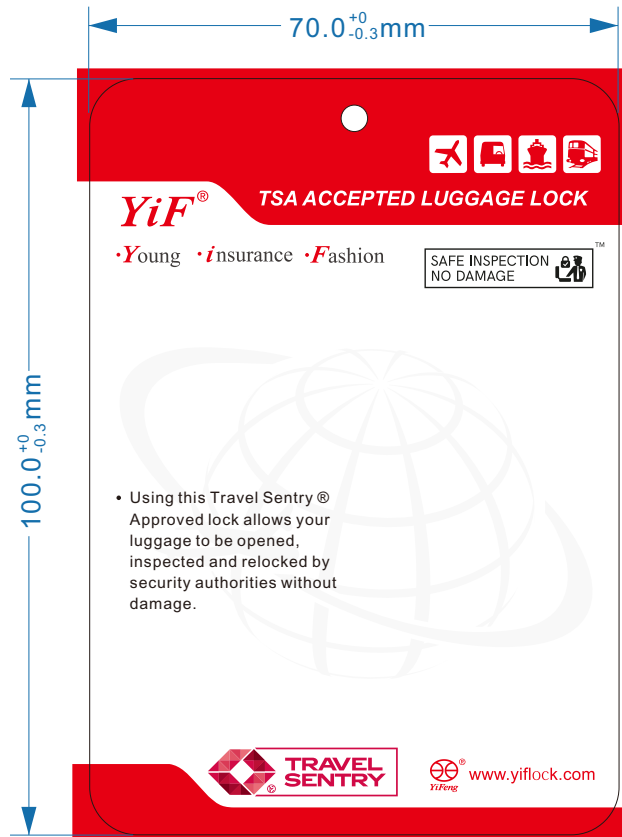
版本	变更内容	变更者	日期		
				<input type="checkbox"/>	<input type="checkbox"/>

A

B

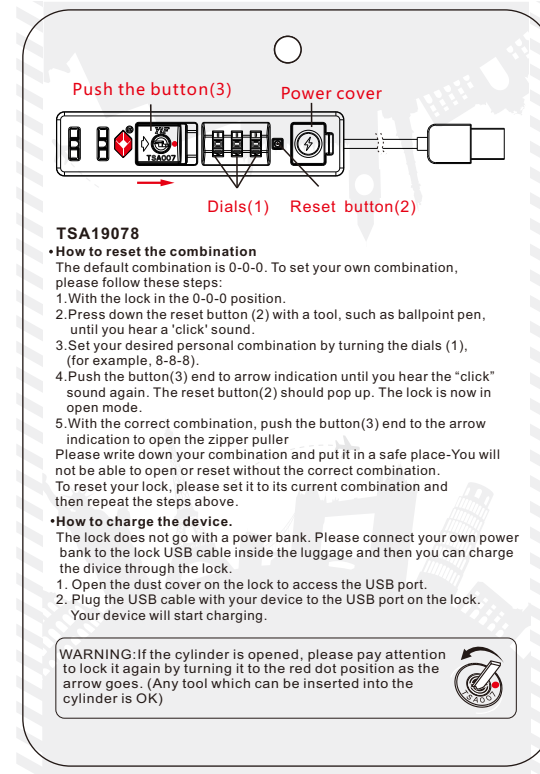
C

D



400g双铜 双面过UV

70*100*0.4 双面印刷(厚度0.4±0.05mm)

 PANTONE 185C
**TSA19078****•How to reset the combination**

- The default combination is 0-0-0. To set your own combination, please follow these steps:
1. With the lock in the 0-0-0 position.
 2. Press down the reset button (2) with a tool, such as ballpoint pen, until you hear a 'click' sound.
 3. Set your desired personal combination by turning the dials (1), (for example, 8-8-8).
 4. Push the button(3) end to arrow indication until you hear the "click" sound again. The reset button(2) should pop up. The lock is now in open mode.
 5. With the correct combination, push the button(3) end to the arrow indication to open the zipper puller

Please write down your combination and put it in a safe place-You will not be able to open or reset without the correct combination. To reset your lock, please set it to its current combination and then repeat the steps above.


•How to charge the device.

The lock does not go with a power bank. Please connect your own power bank to the lock USB cable inside the luggage and then you can charge the device through the lock.

1. Open the dust cover on the lock to access the USB port.
2. Plug the USB cable with your device to the USB port on the lock.

Your device will start charging.

WARNING: If the cylinder is opened, please pay attention to lock it again by turning it to the red dot position as the arrow goes. (Any tool which can be inserted into the cylinder is OK)

制图	周珊	23.10.23	项目	TSA19078	材料		缩水		
审核			全英文说明卡			数量	1PCS	比例	1:1
确认						产品编号	NSMK6804		
版本	A		 怡丰制造有限公司			文件名			
						客户	嘉兴通雅		

1

2

3

4

A

B

C

D