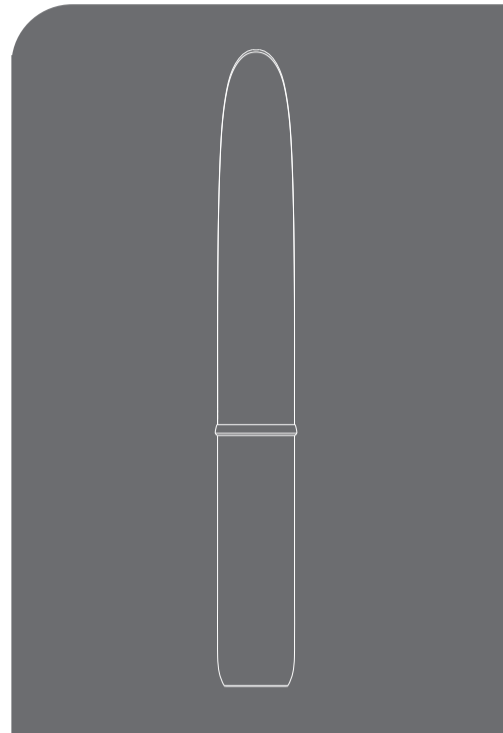


anko



MINI DETAIL TRIMMER

TB-1458

INSTRUCTION MANUAL

Safety Instructions:

To ensure proper operation of this device, please read this instruction manual carefully before using the device, and keep it for further reference.

⚠ WARNING

- Do not use this device under the following conditions: persons with physical, sensory, and mental disabilities; persons with allergies; areas with existing open wounds, inflammation, severe dryness, lumps and other severe skin diseases or conditions.
- Verify if the device is deformed or damaged before you start using it. Do not use the appliance if it has any damage to prevent injuries.
- This device has a variety of using purposes, before using it, select the head you want to use to avoid accidents.
- If any abnormality or fault occurs during use, immediately stop using the appliance.
- If the skin feels abnormal during or after trimming, stop using the appliance and consult a doctor.
- Do not attempt to modify, disassemble, or repair the device by yourself to avoid accidents.

⚠ CAUTION

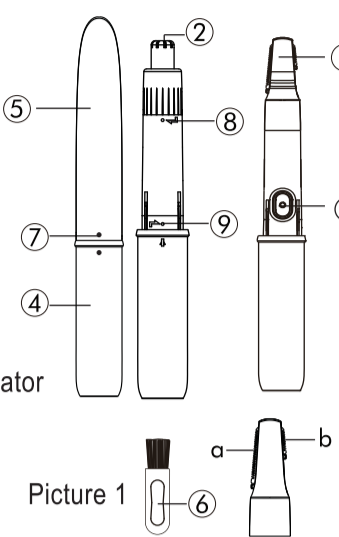
- Do not share the same device with others.
- Regularly clean the device to extend its lifetime.
- Keep the device out of reach of children.
- This device is battery-operated. If you do not use the device for a long time, remove the battery.

Product Specifications:

- Type of Battery: AAA x 1 (Not Included)

Product Description:

- 1 Eyebrow Trimmer Head
 - a) Large Blade
 - b) Small Blade
- 2 Nose/Ear Trimmer Head
- 3 Power Button
- 4 Battery Cover
- 5 Protective Cap
- 6 Cleaning Brush
- 7 Cap alignment indicator
- 8 Head assembly indicator
- 9 Battery cover assembly indicator

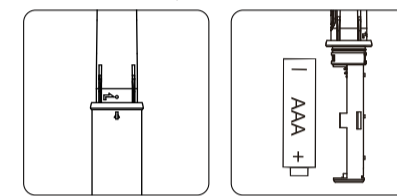


Picture 1

Operating Instructions:

Install the Battery

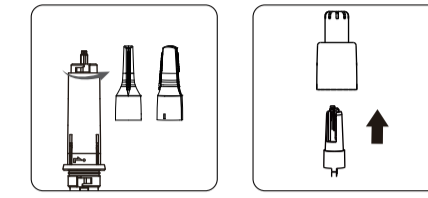
With the device turned off, remove the Protective Cap. With one hand hold the area below the Trimmer Blade (do not press the Power Switch accidentally), with the other hand rotate the Battery Cover counterclockwise and pull the Battery Cover to remove it. Insert 1 AAA battery according to the battery compartment instructions (picture 2) and put the Battery Cover back on rotating it clockwise to lock in place (battery is not included).



Picture 2

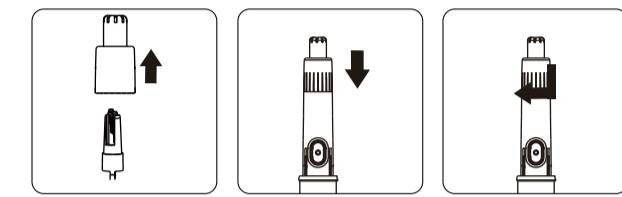
Remove/Install the Trimmer Head

- 1) Before you remove the Trimmer Head, remove the Protective Cap and make sure the device is turned off.
- 2) To remove the Trimmer Head, hold the device body with one hand and with the other hand rotate the trimmer head counter, and pull the trimmer Head upwards (picture 3).



Picture 3

- 3) To install the trimmer blade, place it directly on the device, and rotate it counterclockwise until it locks the position (picture 4).



Picture 4

Using the Device:

- 1) Remove the Protective Cap, select and install the trimmer head you want to use. Press the Power Button to turn the device on.
- 2) Hold the device and place the blade lightly on the area you want to trim. Slowly move the blade against hair growth. Trim different areas as recommended (picture 5).

a) Eyebrows

Place the Blade on the area of the eyebrow you want to trim and move the blade downwards to achieve a perfect shape. Trim under the eyebrows from outside to inside.

b) Forehead

Move the Blade from the hairline to the center of the forehead and back to the hairline.

c) Cheeks

Move the Blade from the center of the face to the ear.

d) Upper lip

Stretch your upper lip and trim downwards.

e) Sideburns

Decide on the length of the sideburns and trim downwards.

f) Neck

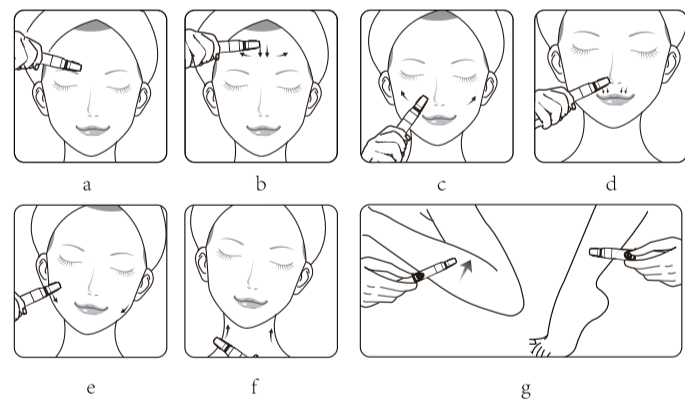
Hold the skin with your fingers and move the Blade upwards.

g) Hands, arms or legs

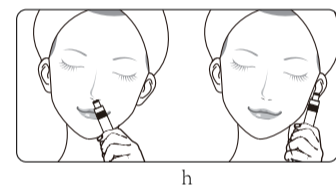
Move the Blade against hair growth.

h) Nose and ears hair

Slowly and slightly insert the nose/ear trimmer blade into the nose or ear to trim (do not insert it too deep to avoid injury).



Picture 5



Picture 5

- 3) After use, press the power button to turn off the device and put the protective cap back on.

Cleaning & Maintenance:

- 1) Make sure the device is turned off before you start cleaning it.
- 2) Do not immerse the device in water. Clean the device surface with a dry cloth or with a cloth moistened with water. The removable part of the head should be cleaned with a brush and then rinsed with water.
- 3) Never use lubricants, detergents, polishing agents or air fresheners on this device.
- 4) Never use towels, paper towels, and wire ball sponge to clean the trimmer blade.

Recycling:

Batteries contain substances that may pollute the environment. Remove the battery when it is empty or when you discard the device. Do not throw away the battery with the normal household waste, dispose the batteries responsibly by recycling. Children should be supervised to ensure that they do not play with the device.

2. Troubleshooting

Problem	Possible Cause	Solution
The appliance does not work	Battery installed incorrectly	Reinstall battery correctly
	Low battery	Install new battery
Poor trimming effect	Worn blade	Change new blade
Trimmer head loose	The trimmer head not locked correctly.	Lock the trimmer head properly.

12 Month Warranty

Your new product is warranted to be free from defects in materials and workmanship for the period stated above, from the date of purchase, provided that the product is used in accordance with accompanying recommendations or instructions where provided. This warranty is in addition to your rights under the Australian Consumer Law.

For New Zealand customers, this warranty is in addition to statutory rights observed under New Zealand legislation.

We will provide you with your choice of a refund, repair (where possible) or exchange (availability dependent) for this product if it becomes defective within the warranty period. The business will bear the reasonable expense of claiming the warranty. This warranty will no longer apply where the defect is a result of alteration, accident, misuse, abuse or neglect.

Please retain your receipt as proof of purchase and contact our Customer Service Centre as listed below, for the entity you purchased this product from, for any difficulties with your product. Warranty claims and claims for expense incurred in returning this product can be addressed to the respective Customer Service Centre.

Our goods come with guarantees that cannot be excluded under the Australian Consumer Law. You are entitled to a replacement or refund for a major failure and compensation for any other reasonably foreseeable loss or damage. You are also entitled to have the goods repaired or replaced if the goods fail to be of acceptable quality and the failure does not amount to a major failure.

Contact for Kmart purchases	Contact for Target purchases
Kmart Australia Ltd. C/- Customer Service Centre 690 Springvale Road, Mulgrave Vic 3170 Customer Service: 1800 124 125 (Australia) or 0800 945 995 (New Zealand) or via Customer Help at kmart.com.au	Target Australia Pty Ltd C/- Customer Service Centre 2 Kendall Street, Williams Landing, Vic, 3027 Customer Service: 1300 753 567 or via Customer Help at target.com.au/help/contact-us