

147x210mm 2024.4.23 蓝欣

anko

Hair Styler

INSTRUCTION MANUAL



Model No.: BY-813G

Please read this instruction manual before using your product and keep it in a safe place for future reference. If you pass the appliance on to anyone else, please include this manual.

INTRODUCTION

Use this appliance to brush human hair only. Do not use this appliance on artificial hair or animals.

IMPORTANT! The appliance may have different results depending on the hair type. Therefore, we recommend to trial at a hidden area of hair before first use. The hot air styler is not recommended for damaged or bleached hair.

SAFETY PRECAUTIONS

- Carefully read all instructions before operation and retain for future reference.
- Do not place near the edge of a bench or table during operation
- Ensure the surface is dry, level, clean and free of liquid and other substances.
- **Do not leave the appliance unattended when in use.** Always ensure the appliance is turned OFF by switching OFF and unplugging the appliance from mains power when not in use, if left unattended and before cleaning and storing.
- Always keep the appliance clean.
- Fully unwind the cord before use.
- To protect against electric shock, do not immerse the power cord, plug or appliance in water or any other liquid.
- Do not allow the cord to hang over the edge of the table or bench, touch hot surfaces or become knotted.
- This appliance is not intended for use by persons (including children) with reduced physical, sensory or mental capabilities, or lack of experience and knowledge, unless they have been given supervision or instructions concerning use of the appliance by a person responsible for their safety.
- Children should be supervised to ensure that they do not play with this appliance.
- If the supply cord shows any signs of damage, DO NOT use. For electrical safety, any repairs to the product must be carried out by qualified electrical person only or the product must be disposed to avoid a hazard.
- This product is intended for household use only. Do not use it outdoors. Not for commercial purposes.
- NEVER grasp the appliance, power cable or power plug with wet hands.
- Always remove the power cable from the socket by pulling on the plug; do not pull on the cable itself. Do not hold or carry the appliance with the power cord.
- Do not fold or crush the power cable. Ensure that the power cable does not run over sharp edges.
- Please do not attempt to dismantle the appliance. This appliance has no user-serviceable parts inside.
- When the appliance is used in a bathroom, unplug it after use since the proximity of water presents an electrical safety hazard even when the appliance is switched OFF.
- Do not use outdoors or operate where aerosol (spray) products are being used or where oxygen is being administered.
- For additional protection, the installation of a residual current device (RCD/ Safety switch) having a rated residual operating current not exceeding 30mA is advisable in the electrical circuit supplying the power outlet socket in the bathroom. If unsure, check with your electrician.

- **DANGER OF ELECTRIC SHOCK!** Do not insert any foreign objects into the appliance.
- Do not use any accessories not supplied with this product.
- The appliance is not intended to be operated by means of an external timer or separate remote control system.
- Always keep the hair away from the rear grille of the appliance. Hair may be sucked into the rear of the appliance causing a blockage.
- Never cover or block the rear grille of the appliance. This may lead to overheating. If the rear grille becomes blocked, stop using the appliance immediately and clear the blockage.
- Ensure the brush attachment is free to blockages. Unrestricted airflow is required for correct operation and to prevent overheating.
- The brush attachment will become hot during use. Allow it to cool before removing it.
- For user maintenance, please refer to “Cleaning and Maintenance” section.

RISK OF FIRE

- Do not leave the appliance unattended when in use.
- To avoid a build-up of heat, NEVER cover the appliance. Do not use the appliance under a blanket or at other poorly ventilated locations
- Avoid the addition of heat from other sources, e.g., from direct sunlight, heating appliances, other devices, etc.
- Do not use an extension cable. In the event of danger, the power cord plug must be quickly and easily accessible.

ELECTRICAL REQUIREMENT

- Check that the voltage on the rating plate of your appliance corresponds with your house electricity supply which must be 220V-240V AC.

IMPORTANT

- The plug removed from the mains lead, if severed, must be destroyed as a plug with bared flexible cord is hazardous if connected into a ‘live’ power outlet socket.
- If the supply cord is damaged, DO NOT use. Any repairs to the product must be carried out by qualified electrical person only or the product must be disposed.



Danger of suffocation! Keep all packaging material away from children. Dispose of the packaging materials in an appropriate way. Contact your local authorities about collection points or waste separation.



Caution Risk of Burning! The appliance gets very hot! Take care to avoid contact between the hot surfaces of the unit and skin, paying particular attention to the face, neck, chest and hands.



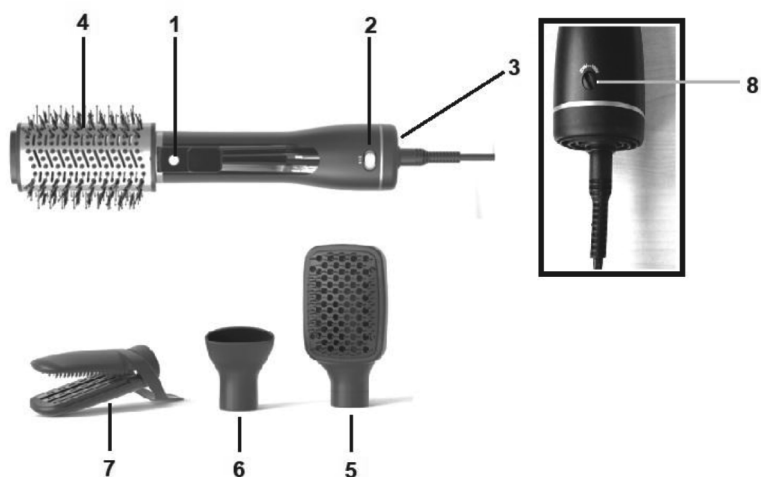
WARNING: Do not use this appliance near bathtubs, showers, basins or other vessels containing water.



Class II Appliance

The hot air styler is for household use only.

PARTS



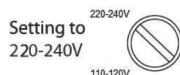
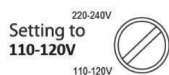
- | | |
|----------------------------------|-----------------------------------|
| 1. Head release button | 2. Heat setting switch |
| 3. Air inlet | 4. Round brush attachment |
| 5. Flat brush attachment | 6. Hair Drying attachment |
| 7. Hair Straightening attachment | 8. Voltage selector (at the back) |

BEFORE FIRST USE

- After unpacking the appliance, check for transport damage and that all the parts mentioned in this manual are present. In the event of damaged or missing parts, return the product back to Kmart.
- Do not discard the original box. It can be used for storage and dispatch to avoid transport damage.
- Clean the appliance as described under the heading Cleaning and Care. For your safety make particular attention to the safety instructions supplied in the user manual.
- **For Australia the Voltage Selector (6) must be set to 220-240V AC.**

SETTING THE MAINS VOLTAGE

Always check the local mains voltage in your area before connecting this appliance. You may need to change the voltage selector setting to match the local mains voltage correctly. To change the operating voltage, turn the selector switch on the handle with a screwdriver or a small coin to line up the slot in the screw with the correct voltage as shown below:



IMPORTANT! Always remember to check the voltage setting before use when you have travelled to another country or returned home. Incorrect voltage setting will result in permanent damage to the appliance

For Australia, ensure that the Voltage Selector (6) is set to 220-240V AC.

CHANGING ATTACHMENT

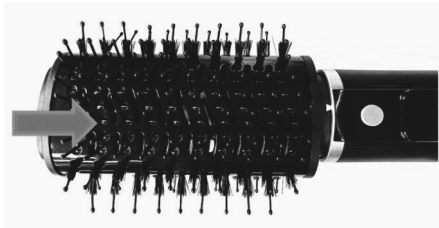


Fig. 1

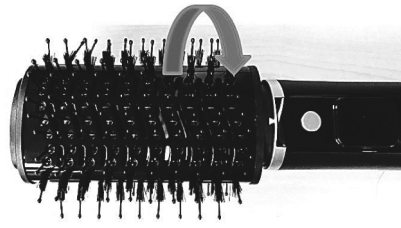


Fig. 2

- Press the attachment head to main unit. The “Δ” mark on attachment shall point slightly right to the “Head release button”. (Fig.1).
- Twist the attachment head to align the “Δ” mark & “Head release button”. When a click is heard, the attachment was fixed. (Fig.2)
- To remove the attachment, press “Head release button”, rotate the attachment anti-clockwise, then pull off the appliance.

Brush attachments: to lift hair to give volume, to help achieve curls and waves

Hair straightening attachment: create straight sleek style

Hair drying attachment: to remove excessive moisture pre-styling

OPERATION

- The Hair Styler combines the benefits of hair styling and drying in one appliance.
- To use the Hair Styler, fully unwind the mains cable. Make sure the Heat Setting Switch is in OFF (0) position.
- Place the appliance on a smooth, flat, dry surface, plug-in and switch on at the mains supply.
- Select the desired attachment head. Use the high heat setting for initial drying, and the low heat setting as the hair begins to dry and for styling.
- Use the cool setting to set the style for longer lasting results after drying and styling.
Position 0 – OFF
Position 1 – Low heat setting
Position 2 – High heat setting

For styling hair

- Make sure your hair is 80% dry. Place the appliance into the hair, close to the roots.
- Move the brush through the hair towards the ends. When reach the end of the section, start to rotate the brush inward to make the root lift.
- For even more volume, wind the entire section of the hair around the comb part until you reach the root. Leave the brush in the hair for a few seconds.
- When finished drying or styling, switch the appliance OFF, unplug and allow it to cool down before putting it down or storing.

For Straightening hair

- Take a section no more than 4 to 5cm wide. Place the hair between the two flat plates, as close as you can near the scalp.
- Hold the plates tight for a couple of seconds and slide the straightener in an even motion towards the ends. For best results, hold the hair while smoothing the section
- **CAUTION!** Do not hold the hair between the plates for more than a couple of seconds as this may damage your hair.

- When you have finished one section, move to another area of hair and repeat the process. Allow the hair to cool before combing through.
- After using, turn OFF the appliance. Make sure the power indicator has gone off.
- Unplug the appliance and put it on a table to allow for cooling.

UNBLOCKING THE REAR GRILLE

- Make sure the hot air styler is disconnected from the mains power outlet socket.
- If during use, the air inlet grille becomes clogged or blocked with dust or dirt, remove dust or hair by using a dry brush.
- The unit should be cleaned at least once a month
- Clean the appliance with a soft, slightly damp cloth. Make sure that no moisture has entered the appliance during cleaning.

CLEANING AND MAINTENANCE

- **Attention!** Turn OFF the appliance before cleaning by disconnecting the supply cord plug from the mains power outlet socket.
- **Attention!** Do not use any alcohol, acetone, gasoline, abrasive cleaning agents, etc. to clean the plastic components. Do not use hard brushes or metal objects for cleaning.
- Risk of burning! Do not clean the appliance while still hot.
- Wipe the appliance with a dry cloth.
- Never submerge the appliance in water or let water run over the heating plates on the appliance.
- Clean the air inlet opening from time to time with a fine brush.

STORAGE

- Store the appliance in a cool, dry location, away from children and pets.
- If the appliance is not used for an extended period, store it preferably in its original packaging.
- After use do not wrap the cord around the appliance as in time this may cause the cord to fracture. Coil cord loosely by the side of the appliance during storage.

DISPOSAL

- Do not dispose this product with normal household waste collection. If unsure, contact the local council waste management service for proper disposal facilities available for your area.

TECHNICAL DATA

Model: BY-813G
Voltage: 110-120V/ 220-240V
Frequency: 50-60Hz
Power: 1000W

12 Month Warranty

Thank you for your purchase.

Your new product is warrantied to be free from defects in materials and workmanship for the period stated above, from the date of purchase, provided that the product is used in accordance with accompanying recommendations or instructions where provided. This warranty is in addition to your rights under the Australian Consumer Law.

For New Zealand customers, this warranty is in addition to statutory rights observed under New Zealand legislation.

We will provide you with your choice of a refund, repair (where possible) or exchange (availability dependent) for this product if it becomes defective within the warranty period. The business will bear the reasonable expense of claiming the warranty.

This warranty will no longer apply where the defect is a result of alteration, accident, misuse, abuse or neglect.

Please retain your receipt as proof of purchase and contact our Customer Service Centre as listed below, for the entity you purchased this product from, for any difficulties with your product. Warranty claims and claims for expense incurred in returning this product can be addressed to the respective Customer Service Centre.

Our goods come with guarantees that cannot be excluded under the Australian Consumer Law. You are entitled to a replacement or refund for a major failure and compensation for any other reasonably foreseeable loss or damage. You are also entitled to have the goods repaired or replaced if the goods fail to be of acceptable quality and the failure does not amount to a major failure.

| Contact for Kmart purchases | Contact for Target purchases |
|--|--|
| Kmart Australia Ltd. C/- Customer Service Centre 690 Springvale Road, Mulgrave Vic 3170 Customer Service: 1800 124 125 (Australia) or 0800 945 995 (New Zealand) or via Customer Help at kmart.com.au | Target Australia Pty Ltd C/- Customer Service Centre 2 Kendall Street, Williams Landing, Vic, 3027 Customer Service: 1300 753 567 or via Customer Help at target.com.au/help/contact-us |

