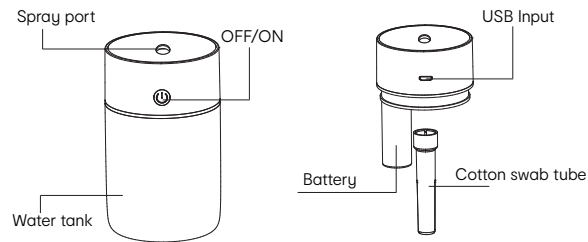


160mm

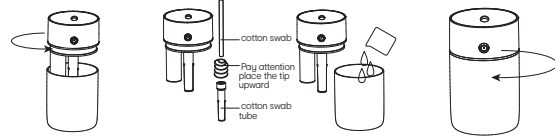
In Car humidifier

KC:43381579



Instruction

Steps:



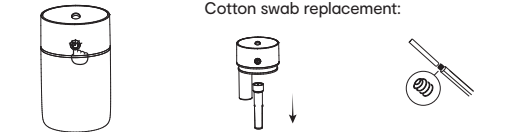
Turn counterclockwise to unscrew the cover

Put the cotton swab into the cotton swab tube

Unscrew the cover and add water to the tank with below "Max line"

Turn the cover clockwise to tighten

Cotton swab replacement:



Click the button Product work

Pull out filter tube and replace it

Please pay attention to the spring in bottom

Spraying Operation:

1. Double-click to turn on the power, turn on the continuous spray mode, and turn on the marquee mode at the same time; (double-click again to turn off)
2. Short press the second time, intermittent spray (spray for 3 seconds and stop for 3 seconds)
3. Short press the 3rd time to turn off the power (turn off the spray and turn off the lights at the same time)

Lighting Mode:

1. Double-click to turn on the marquee mode
2. Long press for the first time, the marquee mode will change to the colorful atmosphere light gradient mode;
3. Long press the second time to fix the color of the light
4. Long press the third time to turn off the light

Charging:

When the battery power is off, need to charge the product. Please insert the USB cable, and connect a power supply (DC 5V=0.5-1A)
 Red Light: Charging
 Green Light: Full Charge

Product Specification

Rated input: DC5V/1A	Spray volume: 25-40mL/h
Battery Capacity: 1200mAh	Product material: ABS/PP/silicone/PCBA
Charging time: about 4 hours	Product size: 12.5*6.8cm(Dia)
Working time: Max.6 hours	Product weight: 140g
Rated power: 2W	

Precautions and Troubleshooting

1. Use clean tap water or still mineral water, do not use Distilled water.
2. Do not fill water past the Max line.
3. Fill with water when spray stops or weakens.
4. Spray has odor, replace the water regularly and replace cotton swab.
5. Do not touch or move while driving, set up humidifier before commencing journey

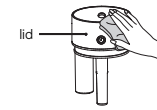
Product contents

Humidifier*1; Cable*1; Manual; Cotton Swab*2

Care instruction

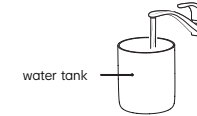
Important: Switch off and unplug the Power cord from the appliance first before cleaning.

1. Lid maintenance Remove the cover and wipe gently with a soft cloth.



IMPORTANT: Do not use water to rinse the lid

2. Water Tank Using the small cleaning brush and water only (no detergents, household cleaners or scouring pads etc.), brush any residue off the transducer.



3. Cotton swab and cotton swab tube



Using water only, (no detergents, household cleaners or scouring pads etc.), then ventilate and dry

4. Do not remove the cover during using
5. Do not add water from the mist outlet



Made in China

116mm