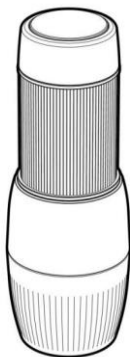


# **anko**

## **MANUAL ESPRESSO**

### **Instruction Manual**



**Rev 01**

**Model No.: ACM101**

To ensure the proper operation of this device, please read this instruction manual carefully before using the device and keep them for further reference.

## General Information and Safety Instructions

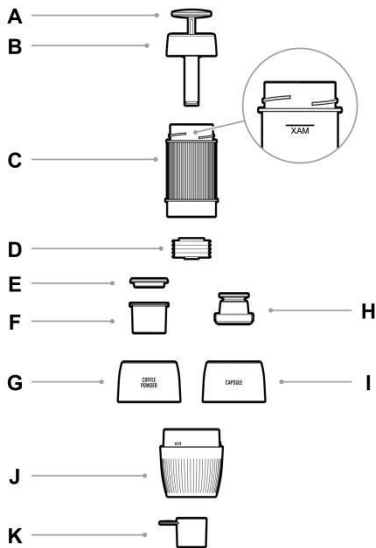


Read all instructions thoroughly before first use, even if you are familiar with this type of product. The safety precautions mentioned in this manual reduce the risk of burns, and injury when correctly followed. Keep this manual in a safe place for future reference, along with the purchase receipt and packaging. If applicable, pass these instructions onto the next owner of this appliance.

- Do not use the appliance for other than its intended use.
- Do not use any parts that are not included with the product.
- This product is NOT a toy. Ensure that children are supervised and that they do not play with the product or its packaging.
- Do not place the product on a gas or electric hot plate, in an oven or a dishwasher.
- Do not use the pump if the water tank and adaptor are not in place.
- Only use clean water in the product. Do not use any other liquid.
- Never heat up water in the water tank.
- Water must be heated prior (e.g. In a kettle) and then poured into the water tank.
- Ensure that the product is regularly and carefully cleaned.
- Ensure you do not clean the product or its parts in the dishwasher – this will destroy the product.
- Do not use the product if it is showing any signs of breakdown or malfunctions.
- Do not attempt to dismantle or repair the product.

**SAVE THESE INSTRUCTIONS**

# Product Overview



**A.** Hand pump

**B.** Water tank cover

**C.** Water tank (internal MAX mark)

**D.** Junction valve

**E.** Coffee powder container cover

**F.** Coffee powder container

**G.** Powder Adaptor

**H.** Capsule puncture holder

**I.** Capsule Adaptor

**J.** Coffee cup

**K.** Coffee powder scoop

# Operation

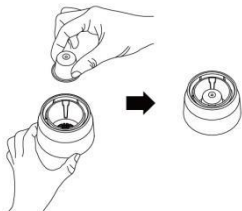
## Using Coffee capsule adaptor

NOTE: Ensure to wash each part of the product with warm soapy water prior to use and dry thoroughly.

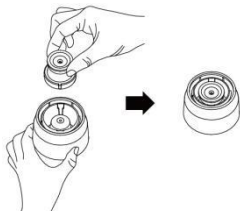


## Prepare coffee capsule

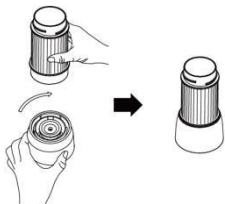
1. Put the coffee capsule into the Capsule Adaptor.



2. Put the Capsule puncture holder on top



**3. Tighten the water tank onto Capsule Adaptor.**

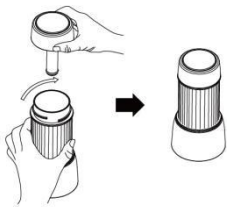


**4. Pour hot water into the water tank, ensuring it does not exceed the "MAX" line.**

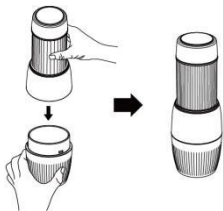


**5. Tighten the water tank cover.**

**6. Insert the assembled part**



**onto the coffee cup.**



## Using the Coffee Powder adaptor

**NOTE:** Ensure to wash each part of the product with warm soapy water prior to use and dry thoroughly.

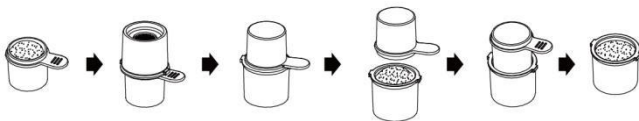


### Tips

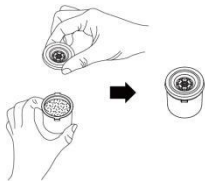
- Use fresh roasted coffee beans and filtered water.
- Grind coffee beans just prior to preparing your espresso shot.
- Only use one scoop of ground coffee to fill the powder container.

### Prepare Coffee Powder

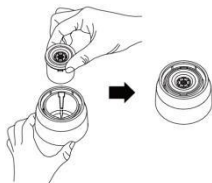
- Fill the Coffee Powder scoop with ground coffee. Position the powder container on the top of the scoop, reverse to transfer ground coffee into the powder container. Tap the container several times to allow the coffee to be evenly distributed and flatten the powder.



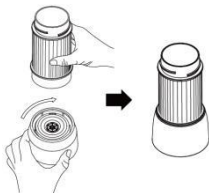
**1. Cover the Coffee Powder container.**



**2. Insert the assembled Coffee powder container into the Powder adaptor.**



**3. Tighten the water tank onto the Powder container lid.**

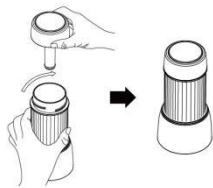


**4. Pour hot water into the water tank up to "MAX" line.**

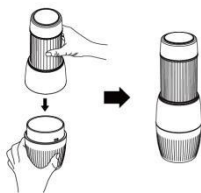


**5. Tighten the water tank cover.**

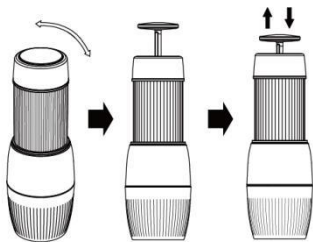
**6. Insert the assembled part**



**onto the coffee cup.**



- When the capsule or ground coffee adaptors are ready in place, you may now begin brewing.
- Unlock the silver hand pump by turning it left or right, the pump will pop-up when unlocked. To brew your coffee, press the pump up and down. (Frequency of the press should be at a consistent pace).



- When the coffee has brewed and there is no water in the tank, disassemble the coffee cup and enjoy your beverage.
- Ensure to disassemble the product, dispose of the capsule and wash each part with warm soapy water and dry thoroughly.
- Reassemble the product and store in a cool, dry place out of direct sunlight.



# Cleaning and Maintenance

**NOTE:** Do not place any parts of the product in the dishwasher! This will destroy the product.

- Once you have finished using the product, remove the used coffee capsule or ground coffee from the adaptor.
- Reassemble the product and pour cold water into the water tank and press the pump up and down with your hand. (Compression frequency should be at a consistent fast pace). This will help to clean out the adaptor.
- Disassemble the product and wash all detachable parts with warm soapy water and ensure to rinse thoroughly with clean water.
- Ensure all parts are clean and dry before storing.
- There is a detachable seal ring in the capsule container, clean it after use.

## STORAGE

- Ensure that the product has been cleaned and dried thoroughly before storing.
- Store in a cool and dry place away from direct sunlight and out of reach of children.