



K: 43-396-498 | T: 69-317-101

Model No.: 205324

3 Pack LED Light

IMPORTANT SAFETY INSTRUCTIONS:

The following safety precautions should always be followed, to reduce the risk of electric shock, personal injury or fire. It is important to read all of these instructions carefully before using the product, and to save them for future reference or new users.

WARNING:

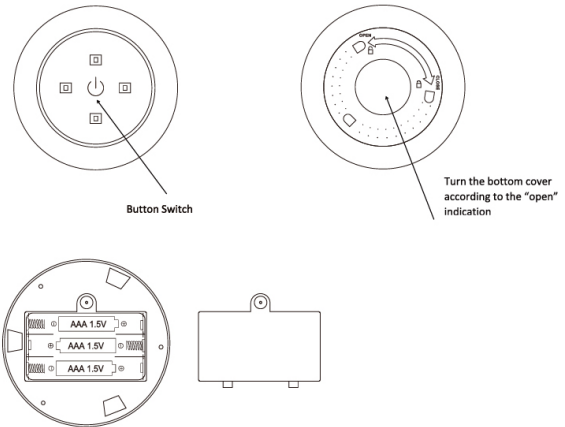
1. Read this user manual thoroughly before first use and pass it on with the product.
2. LED's are not replaceable. When it reaches its end of life, the whole light shall be replaced.
3. Do not stare into the LED beam.
4. The product is intended to be used in moderate climates only. Do not use in tropical or very humid climates.
5. Do not move the product from cold into warm environments and vice versa.
6. The use of accessories and parts not specifically recommended by the manufacturer may cause injuries or damages and will result in forfeiture of the warranty.
7. If the product shows damages, do not use it any longer and have it re-paired by a qualified technician, or contact our customer service department. Do not disassemble the product, and do not try to repair it yourself.
8. Remove the batteries from the product before disposal.
9. Do not attempt to open the LED module to avoid damage.
10. The battery in the product can be replaced but cannot be charged.
11. Children must not use this product without adult supervision.
12. Do not expose the product to fire or high temperatures over 45°C.

13. Keep away from water, liquids, or wet areas.
14. Use a dry cloth to clean this product. Do not use chemicals on this product.
15. Do not place the product in direct sunlight, heat or the under the windshield.
16. When the unit is not in use, make sure it is correctly turned off and stored in a cool dry place.
17. When disposing of this product. Do so responsibly following local government requirements.

WARNING: READ AND FOLLOW ALL ABOVE INSTRUCTIONS CAREFULLY. DO NOT DROP OR APPLY EXCESSIVE FORCE TO THIS PRODUCT. DO NOT EXPOSE TO HIGH TEMPERATURES. IMPROPER USE OR HANDLING OF THIS PRODUCT MAY RESULT IN FIRE OR EXPLOSION CAUSING SERIOUS INJURY OR PROPERTY DAMAGE.

Accessories Quantities:

Light x 3



Operating manual:

1. Rotate the bottom cover according to the "open" indication.
2. Unscrew and open the battery cover, insert 3x 1.5V AAA battery.
3. Close the battery cover and screw again.
4. Rotate the bottom cover back.
5. You can turn the light on by press the top button switch.
6. Peel off the tape on the bottom and stick on a smooth, tidy surface.
7. Wipe the dust before stick.

Battery Installation:

Product: Each light requires 3x1.5V AAA batteries (not included).
Battery installation by an adult is required.

BATTERY WARNING:

- Batteries are to be inserted with correct polarity.
- Do not mix different types of batteries or new and used batteries.
- The supply terminals are not to be short-circuited.
- Remove batteries from the product when not in use for extended time or when batteries become exhausted.
- Dispose of batteries responsibly.
- Do not dispose of in fire.