

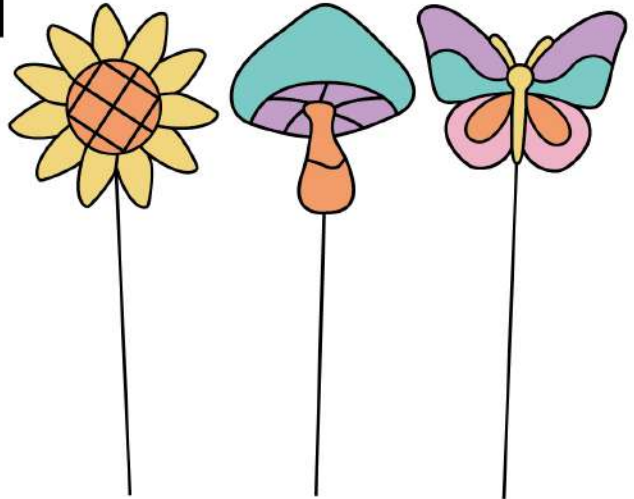
DIY Sun Catcher Garden Stakes Kit Instruction Manual

Kit Includes

- › 3 x metal garden stakes
- › 5 x melting bead colours
- › 1 x instruction sheet

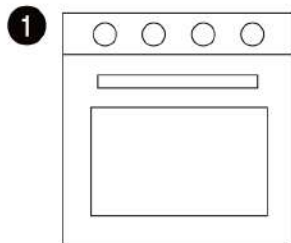
Tips

- › Use a metal tray with aluminium foil.
- › Ensure the frame is completely flat with no movement before adding beads. Keep the frame still while adding beads.
- › Fill the smallest parts of the frame first.
- › Press down on the beads to make sure they are spread evenly.
- › Do not use a microwave or toaster oven.
- › Melting beads can create a smell during the melting process, ensure your space is well-ventilated.
- › Keep all materials away from an open flame.

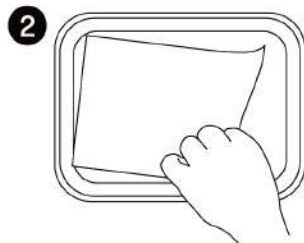


Guide Image

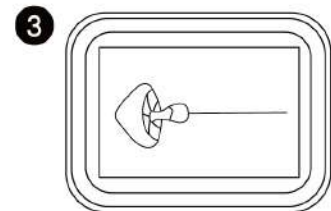
How To Make A Sun Catcher Garden Stake



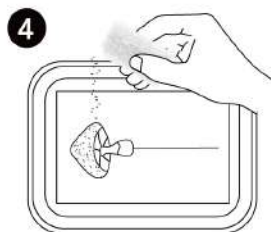
1 Preheat the oven to 190 degrees Celsius.



2 Cover the tray with a sheet of aluminum foil. The foil should be smooth and wrinkle-free to create a glass-like sun catcher. For a textured look, crinkle the aluminum foil.



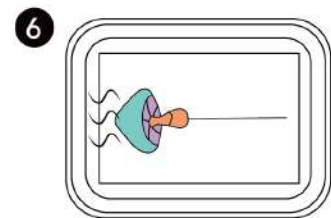
3 Place the frame flat-side down onto the covered tray. The frame should be in the centre of the tray.



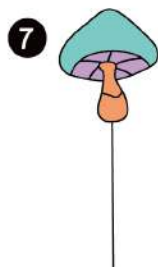
4 Take the first bag of beads and cut a small corner off the bag. Using the image guide for colour reference, carefully pour the beads into the frame sections. Continue filling the whole frame until you cover the foil underneath.



5 Place the tray in the centre of the oven using protective mitts or similar. Bake the sun catcher for 25-30 minutes, or until all of the beads have melted evenly into a glass-like appearance. Do not over bake, it will cause the beads to burn.



6 Remove the tray from the oven using protective mitts or similar. Allow the sun catcher to cool for about 10 minutes. As the plastic cools, it will make popping noises, this is normal.



7 Once the sun catcher has cooled completely, remove it from the tray ready to use. Place the garden stake in a pot plant or in the garden.

MADE IN CHINA

CUSTOMER SERVICE:

KMART AU: 1800 124 125

KMART NZ: 0800 945 995

TARGET AU: 1300 753 567

KEYCODE

K: 43-403-905 | T: 69-387-005