

Texture Canvas Art Kit

Instruction Manual

Kit Includes

- › 2 x stretched canvases
- › 5 x acrylic paints
- › 2 x modelling pastes
- › 1 x paint palette
- › 2 x plastic knives
- › 2 x paint brushes
- › 1 x plastic scraper
- › 1 x instruction sheet

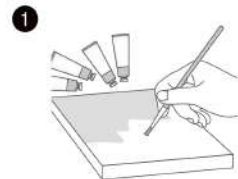
Tips

- › Acrylic paints and modelling paste should be well mixed and blended.
- › Wait for the first coat of base colour to dry before adding more paint.
- › The mixture needs to be adjusted with the back of the plastic knife to get a full and complete shape.
- › Do not handle completed artwork until completely dry
- › Wearing gloves is recommended.



Guide Image

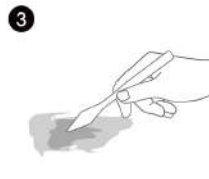
How To Make A Floral Texture Canvas



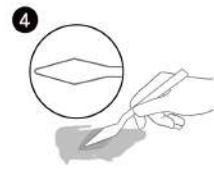
Paint the base colour and allow to dry.



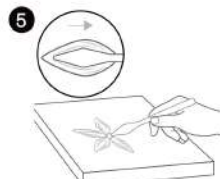
Mix the modelling paste choose with your desired acrylic paint colours and mix until blended. Add more paint to brighten colours, or more modelling paste to lighten colours.



Take some modelling paste mixture onto a flat surface and mix.



Form a shape and scoop mixture onto the back of the palette knife ready to apply to the artwork.

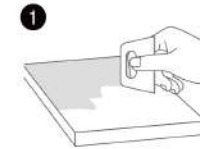


Apply the modelling paste to the canvas and gently press down and slide away, to make an indent in the form and make a petal or leaf shape.

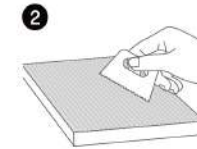


Cover the canvas with a variety of petal and leaf colours. Wait 24 hours after completion to dry and display your artwork.

How To Make A Palm Tree Texture Canvas



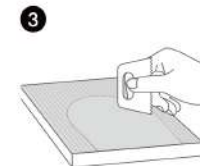
Squeeze out the modelling paste and use the flat edge of the plastic scraper to apply it evenly and thick over the whole canvas. Clean the scraper with warm water.



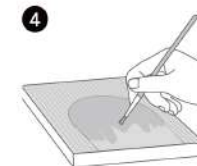
Use the textured edge of the plastic scraper to make texture lines from top to bottom of the canvas.



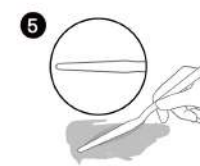
Guide Image



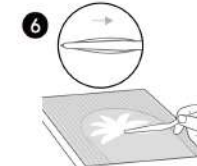
Make an arch with the plastic scraper using the flat edge, then wait 24 hours for modelling paste to dry.



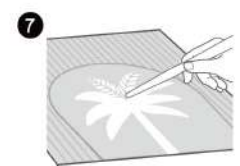
Use the paint brush and acrylic paint to paint the arch.



Use the back of the rounded palette knife to adjust and shape the modelling paste on a flat surface.



Scoop the reshaped modelling paste onto the canvas and gently press it down and spread into a leaf shape. Make all palm leave base shapes. Add modelling paste to make the trunk.



Use the side of the palette knife to scrape the texture of the leaves and trunk.



Wait 24 hours after completion to dry and display your artwork.

MADE IN CHINA
 CUSTOMER SERVICE:
 KMART AU: 1300 524 125
 KMART NZ: 0800 943 995
 TARGET AU: 1300 763 567

KEYCODE
 K: 43-412-235 | T: 69-458-132