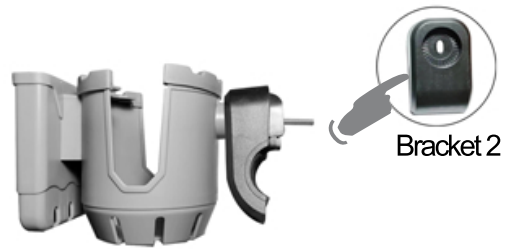
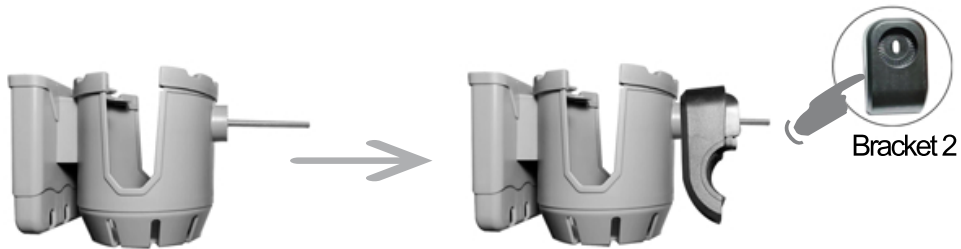
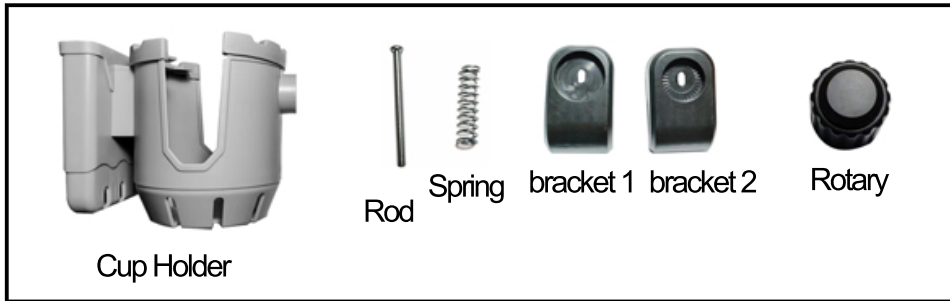


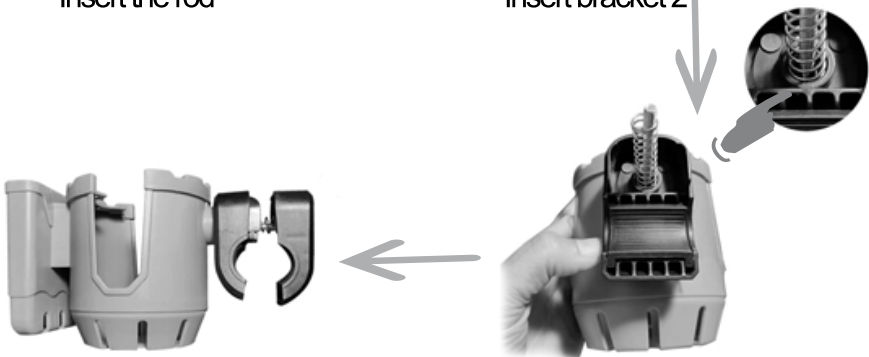
Instruction Manual

Keycode: 43419074



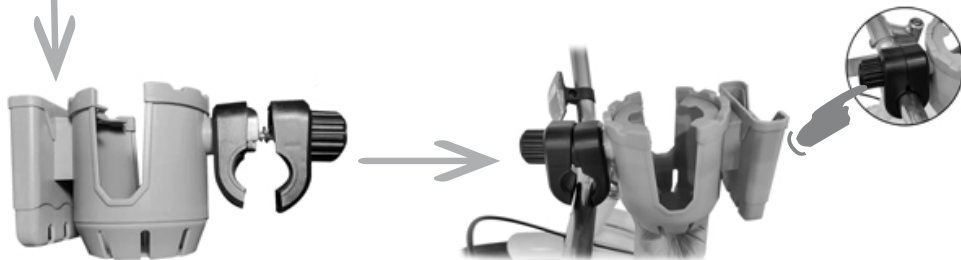
Insert the rod

Insert bracket 2



Insert spring, make sure the end sits correctly

Insert bracket 1



Put the bracket on the handlebar to rotate the circle button to tighten it

Compatible with various handlebar



Bicycle



Scooter



Wheelchair



Thick round handlebar



Small round handlebar



Flat handlebar

WARNING:

- ATTACH TO FRAME AND KEEP OUT OF REACH OF CHILDREN.
- USE WITH LIDLESS CUP OR CONTAINER IS NOT RECOMMENDED.
- LEAKS OR SPILLS MAY RESULT WHEN RIDING ON UNEVEN OR ROUGH TERRAIN.
- ADULT ASSEMBLY REQUIRED.
- THIS IS NOT A TOY. NEVER PLACE A HOT DRINK IN THE DRINK HOLDER.
- FOLLOW USAGE INSTRUCTIONS CAREFULLY.
- MAX LOADING: 0.5KG