

# anko

## Detangler Ionic Hairbrush Instruction Manual



M62015

Rev 01

To ensure proper operation of this device, please read this instruction manual carefully before using the device and keep it for further reference.

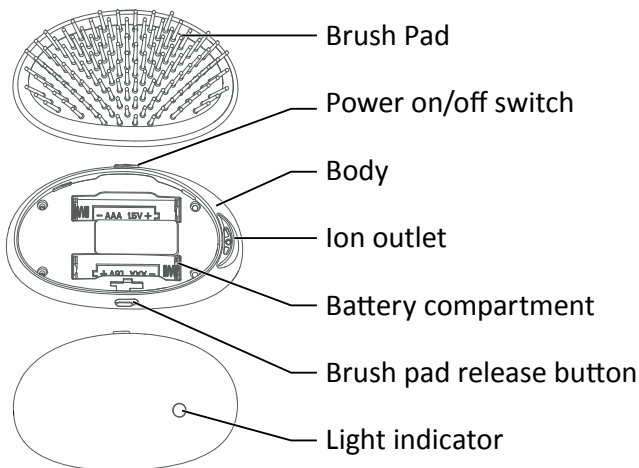
# IMPORTANT SAFETY INSTRUCTIONS

- Please read this manual carefully before use, and keep it for future reference.
- Insert the batteries according to the polarity.
- Exhausted batteries are to be removed from the appliance and safely disposed of. If the appliance is to be stored unused for a long period, the batteries should be removed.
- **DO NOT** use this product for any purpose other than those described in this manual.
- **DO NOT** use the appliance on artificial hair.
- Never block the ion outlet.
- **DO NOT** insert metal objects into the ion outlet to avoid unexpected dangers.
- **DO NOT** use this ion brush together with hairdryer for styling purpose.
- If the bristles change shape or break, stop using the product.
- Turn the brush off after use.
- This appliance can be used by children aged from 8 years and above and persons with reduced physical, sensory or mental capabilities or lack of experience and knowledge if they have been given supervision or instruction concerning use of the appliance in a safe way and understand the hazards involved.
- Cleaning and user maintenance shall not be made by children without supervision.

- This product is not a toy. Children shall not play with this appliance.
- Keep out of reach of children.
- For household use only.
- **DO NOT** use this appliance while taking a shower. Avoid using it in the bathroom.
- Avoid places with high temperature and humidity.
- **DO NOT** expose the brush under sunlight for long period of time in order to avoid damaging or breaking the product.
- **NEVER** immerse the brush body in water or any other liquid, nor rinse it under the tap.

# PRODUCT AND ACCESSORIES


**Battery Type:** 2 x AAA batteries (not included)

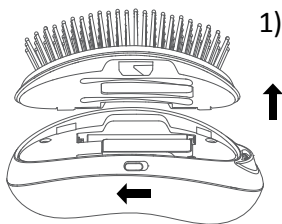


## INSTRUCTIONS FOR USE

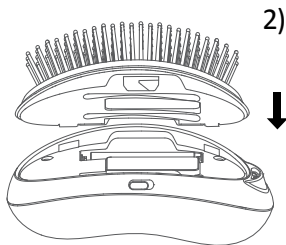
Make sure that batteries and brush pad have been installed properly before first use.

### DETACHING & ATTACHING THE BRUSH PAD

1. To remove the brush pad, push the release button towards  to detach it.



2. First, insert the right side of the brush pad into the buckle position, press the left side of the brush pad downward into the body you will hear a “click” if it is installed correctly.



## **INSTALLING AND REMOVING THE BATTERIES**

This product uses 2 AAA batteries to operate.

1. Remove brush pad.
2. Install batteries according to polarity or remove the batteries from the compartment.
3. Put the brush pad back again.

### **CAUTION:**

- **Make sure your hands are dry when installing the batteries.**

## **USE OF THE IONIC BRUSH**

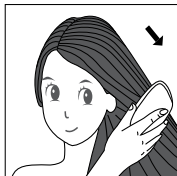
One button operation, high concentration of ions and static electricity, helps you deal with messy hair, makes your hair smooth and shiny. Massages your scalp, reduces stress.

# INSTRUCTIONS FOR USE

1. Turning on: When in standby mode, press the power switch button, the indicator light will light up, massage and ionic function will start, and ionic massage brush is ready to use.

2. After turning the appliance on you may hear a sizzling sound.

3. It's common because it is caused by the ion generator.



4. Comb your hair slowly and gently from the roots to the ends. Repeat this action couple of times until your hair becomes smooth. Combing time varies from hair types and length.

5. Turning off: When you finish combing and massaging, press the power switch button. Massage and ionic function will stop and the ionic massage brush will turn off.

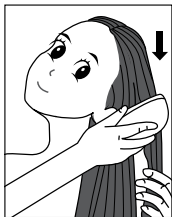
6. Auto turn-off function: It will automatically turn off if there aren't any movements within 10 minutes.

7. Low power alert: When the battery is low, green light will flash. In order to avoid affecting normal usage, replace batteries in time.

## USAGE TIPS:

- The ionic brush performs better when the hair is slightly wet.
- If you wish to use the brush after washing your hair, dry your hair until 80% dry. Over dry your hair may affect the results. Do not use this ion brush together with hairdryer for styling purpose.

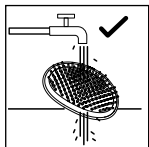
- To fix the entangled hair ends, you would better hold the strand of hair and then brush the hair ends without pulling your hair roots until it is smooth and shine.



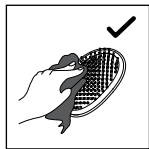
- Apply leave-in hair conditioner to your hair after brushing for best result.
- It is not easy to observe the effect if:
  - You have short or natural curly hair
  - Your hair gets curly easily
  - Your hair condition is too dry or damaged
  - You've had a straightening perm within 3 to 4 months
  - You have lots of short newly grown hair

## MAINTENANCE AND CLEANING

- Turned off the product before cleaning.
- You can use a damp cloth to clean both the brush body and the brush pads. Never immerse the brush body in water or any other liquid.



- Brush pad cleaning: Use your fingers to remove the dust or hair on the brush. Detach the brush pad from the brush body and rinse it under tap water. You can also use toothbrush and shampoo to clean it. Wipe it with dry cloth and let it dry naturally.



- When the brush pad is completely dried, re-attach it to the brush body.
- Keep it in a safe and dry place or put it in your makeup bag for daily use.

**Note: Do not use corrosive liquids to clean this product.**

## 12 Month Warranty

Thank you for your purchase.

Your new product is warranted to be free from defects in materials and workmanship for the period stated above, from the date of purchase, provided that the product is used in accordance with accompanying recommendations or instructions where provided. This warranty is in addition to your rights under the Australian Consumer Law.

For New Zealand customers, this warranty is in addition to statutory rights observed under New Zealand legislation.

We will provide you with your choice of a refund, repair (where possible) or exchange (availability dependent) for this product if it becomes defective within the warranty period. The business will bear the reasonable expense of claiming the warranty.

This warranty will no longer apply where the defect is a result of alteration, accident, misuse, abuse or neglect.

Please retain your receipt as proof of purchase and contact our Customer Service Centre as listed below, for the entity you purchased this product from, for any difficulties with your product. Warranty claims and claims for expense incurred in returning this product can be addressed to the respective Customer Service Centre.

Our goods come with guarantees that cannot be excluded under the Australian Consumer Law. You are entitled to a replacement or refund for a major failure and compensation for any other reasonably foreseeable loss or damage. You are also entitled to have the goods repaired or replaced if the goods fail to be of acceptable quality and the failure does not amount to a major failure.

Contact for Kmart purchases	Contact for Target purchases
Kmart Australia Ltd. C/- Customer Service Centre 690 Springvale Road, Mulgrave Vic 3170 Customer Service: 1800 124 125 (Australia) or 0800 945 995 (New Zealand) or via Customer Help at <a href="http://kmart.com.au">kmart.com.au</a>	Target Australia Pty Ltd C/- Customer Service Centre 2 Kendall Street, Williams Landing, Vic, 3027 Customer Service: 1300 753 567 or via Customer Help at <a href="http://target.com.au/help/contact-us">target.com.au/help/contact-us</a>