

# anko

32" Electric Guitar

43434275 (Model: MEG3201PAK)

Instruction Manual

Thank you to purchase our electric guitar. The instruction manual must be retained since it contains important information. This manual will help you maintain your instrument with care. It covers features and the usage of the instruments. Keep your guitar in good working order will give you many years of enjoyment with your guitar instrument. Have fun and enjoy your guitar!



### ACCESSORIES

Make sure the following are included:

- Guitar
- Amplifier
- Guitar strap
- Guitar Case
- Guitar pick
- E & B strings
- Audio cable with 6.3mm plug
- Tuning tool
- Instruction Manual

1

## SAFETY PRECAUTIONS



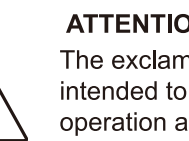
**CAUTION**  
RISK OF ELECTRIC SHOCK  
DO NOT OPEN



**CAUTION:** TO REDUCE THE RISK OF ELECTRIC SHOCK, DO NOT REMOVE COVER (OR BACK). NO USER-SERVICEABLE PARTS INSIDE. REFER SERVICING TO QUALIFIED SERVICE PERSONNEL.

### DANGEROUS VOLTAGE:

The lightning flash with arrowhead symbol, within an equilateral triangle is intended to alert the user to the presence of uninsulated dangerous voltage within the product's enclosure that may be of sufficient magnitude to constitute a risk of electric shock to persons.



**ATTENTION:**  
The exclamation mark within an equilateral triangle is intended to alert the user to the presence of important operation and maintenance (servicing) instructions in the leaflet accompanying the appliance.

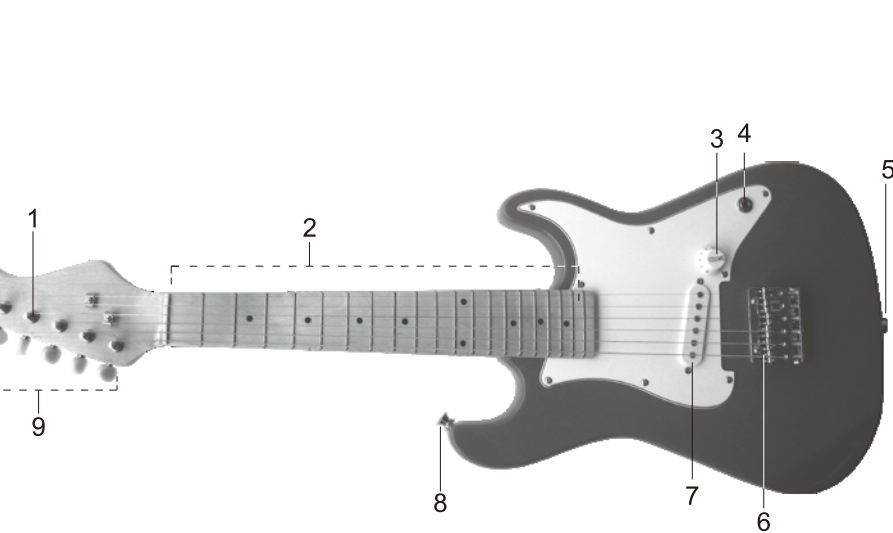
### INFORMATION:

This equipment has been tested and found to comply with the limits for a Class B digital device, pursuant to Part 15 of the FCC Rules. These limits are designed to provide reasonable protection against the harmful interference in a residential installation. This equipment may radiate radio frequency energy and, if not installed and used in accordance with the instructions, may cause harmful interference to radio communications. However, there is no guarantee that interference will not occur in a particular installation. If this requirement does cause harmful interference to radio or television reception, which can be determined by turning off the equipment, the user is encouraged to try to correct the interference by one or more of the following measures:

- Reorient or relocate the receiving antenna.
- Increase the separation between the equipment and receiver.
- Connect the equipment to an outlet on a circuit different from that the receiver is connected to.
- Consult the dealer or an experienced radio/TV technician for help.

2

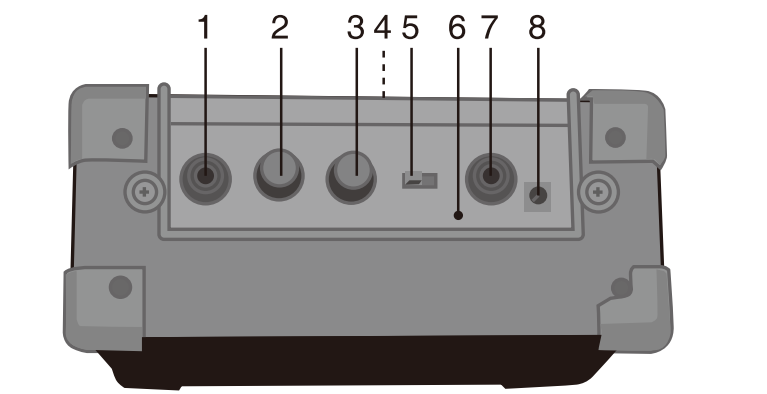
## LOCATION OF CONTROLS (GUITAR)



1. Tuning Pegs
2. Finger Board
3. Volume Control
4. Audio Amplifier Out Jack
5. Bottom Strap Button
6. Bridge
7. Pickup
8. Upper Strap Button
9. Tuning knobs

3

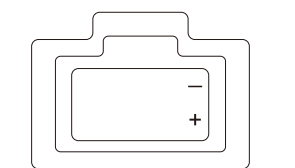
## LOCATION OF CONTROLS (AMP)



1. Audio INPUT Jack
2. VOLUME Control
3. TONE Control
4. Battery Compartment (Rear of Amp)
5. AMP Power ON/OFF Switch
6. DRIVE Indicator
7. Headphone Jack
8. DC 9V IN JACK (Power supply DC 9V/300mA)  $\ominus \oplus$   
Spec.: 60 mV ( Input ) = 2 W RMS ( Output ) / F = 1KHz,  
Volume & Tone Max

## INSTALL 9V 6F22 BATTERY (NOT INCLUDED)

1. Open the battery compartment cover and insert a 9V battery (9V 6F22 battery, not included) with the correct polarity as the diagram.
2. Replace the cover in the battery compartment.



4

## BATTERY PRECAUTIONS

Follow these precautions when using battery in this device:

1. Only 9V battery can be used.
2. Follow the correct polarity when installing the battery as indicated in the battery compartment. Reversed battery may cause damage to the device.
3. If the battery in the device is consumed or the device is not to be used for a long time, remove the battery to prevent damage from the possible battery leakage.
4. Do not try to recharge the battery, it's not rechargeable. Recharging the battery will make it overheat and rupture.
5. Do not dispose of battery in fire, battery may explode or leak.

## AMPLIFIER DC ADAPTOR (NOT INCLUDED)

Alternately the speaker may be powered by a power adaptor with output DC9V 300mA( AC adaptor not included ) and plug it into the DC power socket located in the top of the amplifier. The battery is disconnected when using the adaptor.

Adaptor specification:  
Input: 230-240V~50Hz  
Output: 9.0V==300mA  $\ominus \oplus$

## SAFETY PRECAUTIONS

- The product is not intended for children under 3 years old.
- The product must only be used with the recommended adaptor.
- The product shall only be used with a adaptor for toys, and the adaptor is not a toy.
- Product liable to be cleaned with liquid is to be disconnected from the adaptor before cleaning.
- The product may malfunction when there is radio interference appeared on the power line. The product will revert to normal operation when the interference stops.
- Adaptor used for the product is to be regularly examined for damage to the cord, plug, enclosure and other parts, and that, in the event of such damage, the product must not be used with this adaptor until the damage has been repaired.

5

## SAFETY PRECAUTIONS

- Do not use the player in an extremely dry environment, as this can lead to static discharge which can damage the player.
- Do not expose product to temperatures above 35°C. Keep it out of direct sunlight.
- This product has no user-serviceable parts. Do not attempt to repair this product yourself. Only qualified service personnel should perform servicing.
- Care required with the use of this apparatus in tropical and/or moderate climates.
- Do not subject the product to harsh impacts. Do not drop the appliance. This may result in damage to the product

## CONNECTING THE GUITAR TO THE AMP

Turn the amplifier's VOLUME control to the minimum position before connecting the audio cable, insert the end of the cable to the Amp jack on the guitar and the other end into INPUT jack on the amplifier.

## OPERATE THE AMP.

1. Connect the guitar to the amplifier as described on the above instruction.
2. Slide the AMP. switch to ON position to turn on the AMP.
3. Rotate VOLUME controls on guitar and on amp. to the desired volume setting.
4. Rotate TONE controls on guitar and on amp. as desired.
5. Play your guitar.
6. Slide the AMP. switch to DRIVE position to obtain the overdrive effect, the DRIVE indicator will light.

## HEADPHONE JACK

Insert the plug of headphone (not included) into the headphone jack on the Amplifier for private listening. Please note that the speaker will be disconnected when listening through the headphone jack.

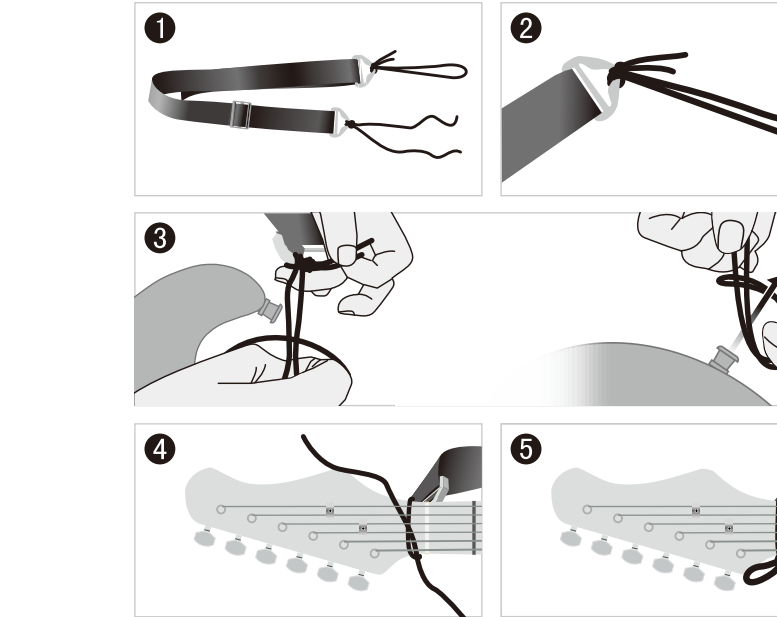
## TUNE THE GUITAR

There are two methods to tune your guitar.  
1. Rotate the tuner on the respective string.  
2. Adjust the height of the bridge with the supplied small wrench.

6

## USING THE STRAP

1. Tie the end into a loop, take loop end and tie around the strap button on bottom and upper of guitar respectively and pull taut, tie into a knot.
2. Or Tie one end into a loop, take loop end and tie around the strap button of guitar and pull taut, tie into a knot, then take the other end and slip one string underneath the guitar strings on the headstock, tie into a bow around the back of the neck.



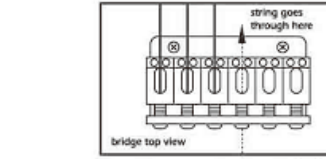
Warning! Not suitable for children under 3 years old, due to cords strangulation hazard.

7

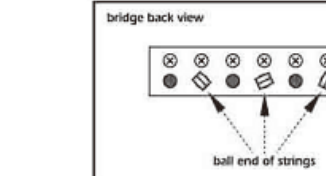
## Instruction for changing your guitar strings

Strings should be changed when they become discolored, dirty or produce a dull sound. Change one string at a time to maintain the string tension on the neck. You can change your guitar strings as per the steps below.

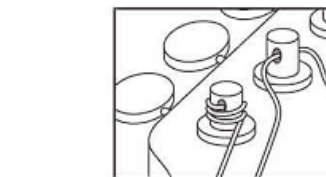
Remove the old string.



Thread the new string through the hole in the back of the bridge.



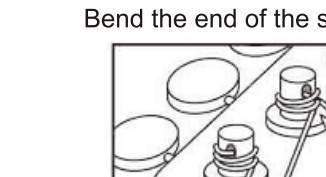
Ball end of strings are retained by the bridge.



Feed the end of the string through the hole in the tuning peg. Leave some slack.



Bend the end of the string and tighten it by turning the tuning peg.



Trim the excess string with wire cutters.

8