

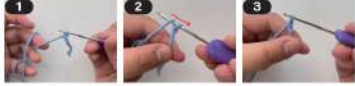
BASIC CROCHET STITCH DIAGRAM
1. Stitch (Abbreviated 'st')

Slip knot
 Every piece of crochet chain starts with a slip knot. Loop the yarn around two fingers (leaving a tail) and pull the tail halfway through the loop. Insert the crochet hook into the second loop and gently pull the loop taut onto the crochet hook.



2. Chain Stitch (Abbreviated 'ch')

The chain stitch is the basis for all crochet which is also called a foundation chain.



3. Slip Stitch (Abbreviated 'sl st')

The slip stitch is the flattest or smallest of all crochet stitches. You can use this stitch by slip-stitching the ends of a foundation chain to form a ring.



4. Single Crochet (Abbreviated 'sc')

The single crochet is the most fundamental of all stitches. Gather the yarn with your crochet hook and draw up the loop through the stitch. Wrap the yarn around the hook and pull it through two loops, leaving one loop on the hook.



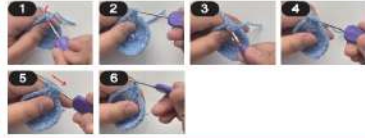
5. Increase (Abbreviated 'inc')

You can increase stitches by adding a stitch at the beginning of the row. Make 2 sc in the same knot.



6. Decrease (Abbreviated 'dec')

You can decrease stitches, which is really just subtracting a stitch, in a row. Make a half sc, at which point there are 2 loops in the hook, then crochet a half sc in the next knot, at which point there are 3 loops in the hook, and finally wind the yarn through all 3 loops to finish a dec.



7. Fasten off (Abbreviated 'F/O')

Fasten off by pulling the yarn through the end stitch and pulling it taut. Cut off.

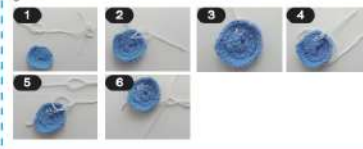


8. Sewing

Generally used for the connection of 2 parts. The plastic needle strap yarns are threaded in turn through the knots where the two parts need to be connected.



If details need to be stitched onto the finished product (such as mouth, eyes, etc.), you can use a plastic needle strap yarns up and down the finished product along the hooked grain.



9. Round (Abbreviated 'Rd')

This continues the chain stitches into a circle. Each round starts with ch and ends with sl st.

10. Magic ring
 When crocheting round artwork, make 1 magic ring first and then crochet from the center. Crochet through the circle loop in the hand to pull back the taut yarn, make 1 sc to form the first knot. After some sc, pull the bottom yarn tight until all knots form a ring. Make 1 ch in the first knot to close the magic ring.



11. Weaving in/invisible close

Cut the yarn, leaving a long yarn end. Draw the end through the final loop on the hook and thread it onto a yarn needle. Weave your needle through the front loops only on the last round and pull tight. Weave remaining yarn into your piece.



Please noted that all yarns needs to be hidden behind the stitch.

Stitches used
 ch chain
 sl slip stitch
 sc single crochet
 inc increase crochet
 dec decrease crochet
 () repeat the step between the brackets
 x repeat steps x times
 F/o fasten off

MAKE A GINGERBREAD

1. BODY

R1: (Please use the khaki yarn) 6 sc [6 sts]

R2: 6 inc [12 sts]

R3: (sc, inc) x 6 times [18 sts]

R4-5: 18 sc [18 sts], F/O

R6: (Please use the white yarn) 18 sc [18 sts], F/O

R7-9: (Please use the khaki yarn) 18 sc [18 sts]

Repeat the R1 to R9 to crochet another leg. After completing both legs, place them together and crochet one round of single crochet stitches to connect them using this method.

R10: 36 sc [36 sts]

R11: (5 sc, inc) x 6 times [42 sts]

R12-16: 42 sc [42 sts]

R17: (5 sc, dec) x 6 times [36 sts]

R18-19: 36 sc [36 sts]

R20: (4 sc, dec) x 6 times [30 sts]

R21: 30 sc [30 sts]

R22: (3 sc, dec) x 6 times [24 sts]

R23: 24 sc [24 sts]

R24: (2 sc, dec) x 6 times [18 sts]

R25: 18 sc [18 sts]

Please fill the fiberfill.

R26: (2 sc, inc) x 6 times [24 sts]

R27: (3 sc, inc) x 6 times [30 sts]

R28: (4 sc, inc) x 6 times [36 sts]

R29: (5 sc, inc) x 6 times [42 sts]

R30: (6 sc, inc) x 6 times [48 sts]

R31-R35: 48 sc [48 sts]

R36: (6 sc, dec) x 6 times [42 sts]

R37: 42 sc [42 sts]

R38: (5 sc, dec) x 6 times [36 sts]

R39: (4 sc, dec) x 6 times [30 sts]

R40: (3 sc, dec) x 6 times [24 sts]



R41: (2 sc, dec) x 6 times [18 sts] Add fiberfill.

R42: (sc, dec) x 6 times [12 sts]

R43: 6 dec [6 sts], F/O

2. ARMS X 2

R1: (Please use the khaki yarn) 6 sc [6 sts]

R2: 6 inc [12 sts]

R3-4: 12 sc [12 sts]

R5: (Please use the white yarn) 12 sc [12 sts]

R6-12: (Please use the khaki yarn) 12 sc [12 sts]

R13: (4 sc, dec) x 2 times [10 sts], add fiberfill, F/O

3. CHRISTMAS HAT

R1: (Please use the red yarn) 6 sc [6 sts]

R2: (sc, inc) x 3 times [9 sts]

R3: 9 sc [9 sts]

R4: (2 sc, inc) x 3 times [12 sts]

R5: 12 sc [12 sts]

R6: (3 sc, inc) x 3 times [15 sts]

R7-8: 15 sc [15 sts]

R9: (4 sc, inc) x 3 times [18 sts]

R10-11: 18 sc [18 sts]

R12: (2 sc, inc) x 6 times [24 sts]

R13-14: 24 sc, sl st [24 sts]

R15: (3 sc, inc) x 6 times [30 sts]

R16-17: 30 sc [30 sts]

R18: (4 sc, inc) x 6 times [36 sts]

R19-20: 36 sc [36 sts]

R21: (5 sc, inc) x 6 times [42 sts]

R22-R23: 42 sc [42 sts]

R24: (6 sc, inc) x 6 times [48 sts], F/O

R25-R26: (Please use the white yarn) 48 sc [48 sts]

4. BOWKNOT

Please use the green yarn, working into a magic ring.

(7ch, 6dtr, 6ch, pull through in the starting loop) x 2 times.

Finally, pull the loop tight. F/O



5. BUTTONS X 2

R1: (Please use the red yarn) 10 sc [10 sts], F/O

6. CANDY CANE

R1: (Please use the red yarn) 6 sc [6 sts]

Do not pull through or stand up below.

R2-R13: 6 sc [6 sts]

Add appropriate fiberfill.

R14: 3 dec [3 sts]

Add wire after crochet complete.



7. SEWING

Sew the arm, buttons and bow tie onto the body. Bend the right arm, around the crutch of the candy cane and sew down to hold it in place. Sew the pom pom onto the top of the hat, then sew the hat to the head. Finally, sew the eyes, mouth and cheeks onto the face.



8. FINISHING

R21: (5 sc, inc) x 6 times [42 sts]

R22-R23: 42 sc [42 sts]

R24: (6 sc, inc) x 6 times [48 sts], F/O

R25-R26: (Please use the white yarn) 48 sc [48 sts]

R27: (5 sc, dec) x 6 times [36 sts]

R28: (4 sc, dec) x 6 times [30 sts]

R29: (3 sc, dec) x 6 times [24 sts]

R30: (2 sc, dec) x 6 times [18 sts]

R31: 18 sc [18 sts]

R32: (2 sc, inc) x 6 times [24 sts]

R33: (3 sc, inc) x 6 times [30 sts]

R34: (4 sc, inc) x 6 times [36 sts]

R35: (5 sc, inc) x 6 times [42 sts]

R36: (6 sc, inc) x 6 times [48 sts]

R37: 48 sc [48 sts]

R38: (6 sc, dec) x 6 times [42 sts]

R39: 42 sc [42 sts]

R40: (5 sc, dec) x 6 times [36 sts]

R41: (4 sc, dec) x 6 times [30 sts]

R42: (3 sc, dec) x 6 times [24 sts]

R43: (2 sc, dec) x 6 times [18 sts]

R44: 18 sc [18 sts]

R45: (2 sc, inc) x 6 times [24 sts]

R46: (3 sc, inc) x 6 times [30 sts]

R47: (4 sc, inc) x 6 times [36 sts]

R48: (5 sc, inc) x 6 times [42 sts]

R49: (6 sc, inc) x 6 times [48 sts]

R50: 48 sc [48 sts]

R51: (6 sc, dec) x 6 times [42 sts]

R52: 42 sc [42 sts]

R53: (5 sc, dec) x 6 times [36 sts]

R54: (4 sc, dec) x 6 times [30 sts]

R55: (3 sc, dec) x 6 times [24 sts]

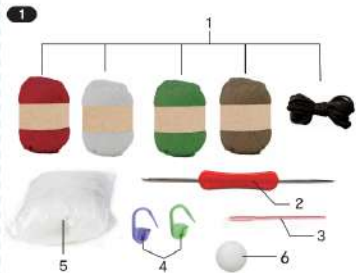
R56: (2 sc, dec) x 6 times [18 sts]

R57: 18 sc [18 sts]

anko

DIY Crochet Kit
Instruction Manual

8+



WHAT'S IN THE BOX

1. Coloured yarns x 5
2. Crochet hook x 1
3. Plastic needle x 1
4. Ring stitch marker x 2
5. 20g fiberfill x 1
6. White pom pom x 1

MADE IN CHINA
 CUSTOMER SERVICE:
 HOWART ATEL 8000 381 925
 HOWART TEL 0353 945 915
 TARGET ATEL 0300 753 347

K-43-436-798
 T: 69-66-997