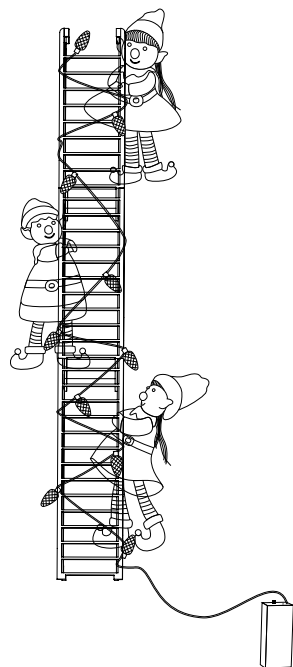
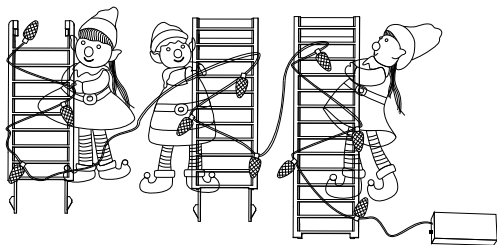


BO LED LIGHT UP ELF TREE TRIMMER (Model No.: BD24435W K: 43446711 / T: 70026924)



Contents:

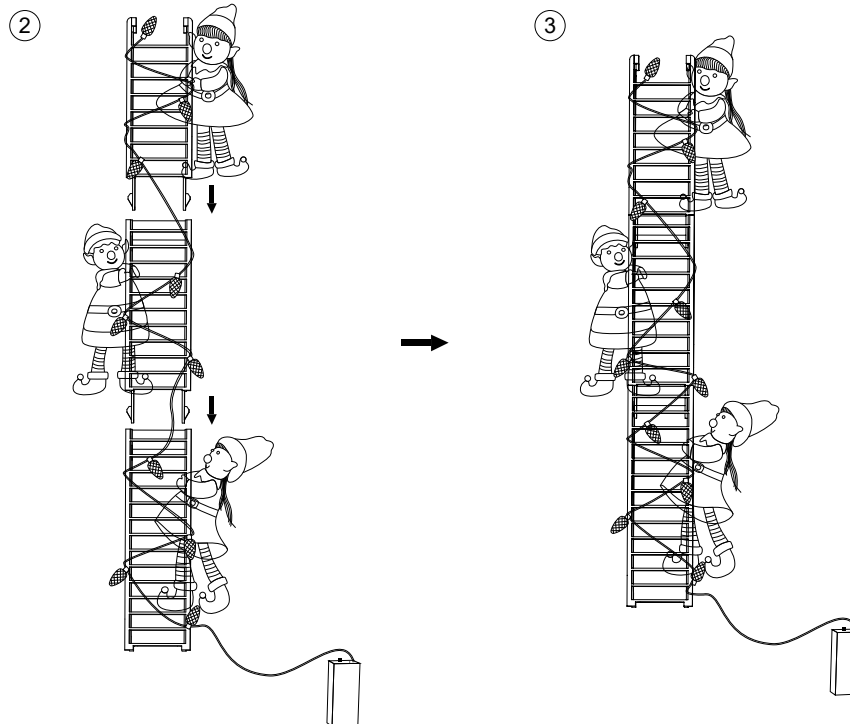
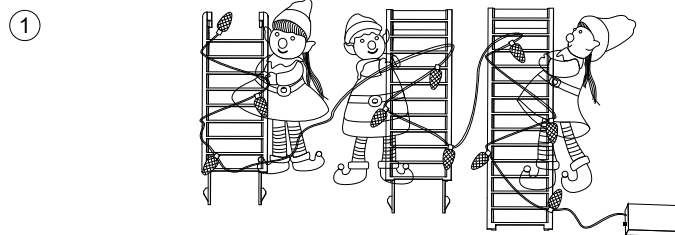
A.



Elf tree trimmer x 1

Assembly Diagram:

Step 1.





Instructions:

1. Remove all packaging before use and dispose of safely.
2. Open the battery compartment cover and insert 2 x AA size batteries.
3. Press the button on battery compartment to switch to ON/OFF function.
4. Press the button on battery compartment to switch to "ON", the light set should now be lit.
5. For decoration only. This is not a toy.

Warnings:

- The light set is designed for INDOOR USE ONLY.
- This unit is powered by 2 x AA size batteries (not included).
- Open the battery door and insert 2 x AA size batteries correctly. Pay attention to the polarities (+/-). The unit will not be powered up if you insert batteries in wrong polarity.
- Always remove the batteries if the unit is not going to be used for an extended period of time.
- Use only the size and type of battery specified. Batteries shall not be exposed to direct sunlight or heat source such as fire, oven or the like.
- When the battery power is low, the unit will not operate. You will need to insert new batteries. Do not mix new and old batteries.
- Never mix different types or old and new batteries.
- No not short circuit supply terminals or dispose of batteries in fire.