

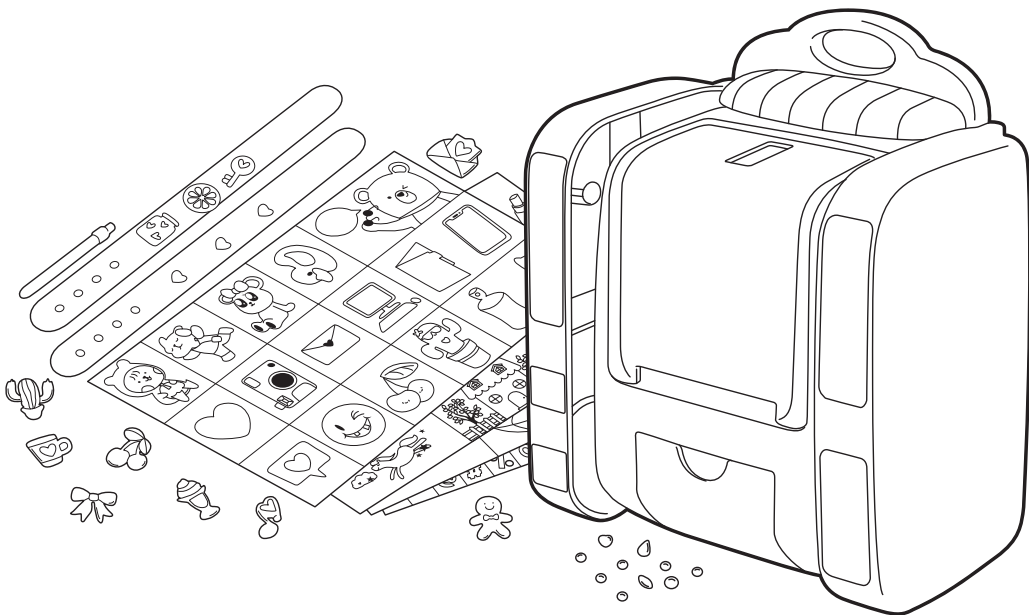
2 in 1 Sticker Studio Deluxe

5+ years

SCAN FOR VIDEO!

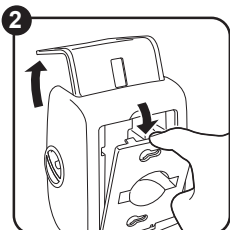
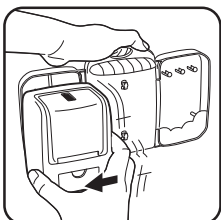
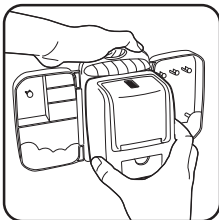
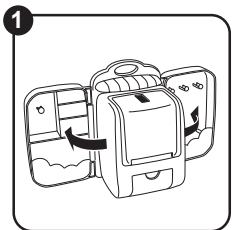


Everyone loves stickers! This machine makes it easy to design your own. Create fun and unique stickers on cards, scrapbooks and more!



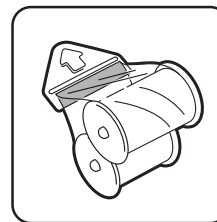
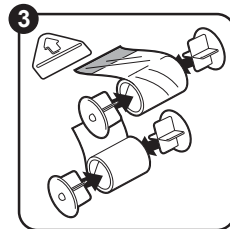
Product Assembly:

Scissors not included

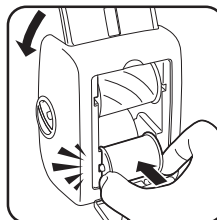
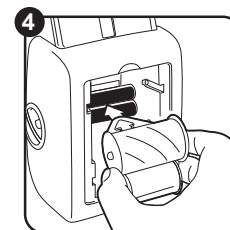


Removing doors: Hold the back of the door (as shown) and start pulling the machine to the left. Both doors are simply for decoration. You can start your sticker project without them.

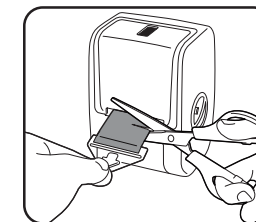
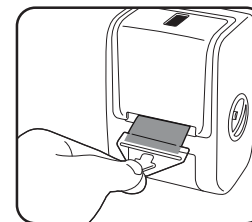
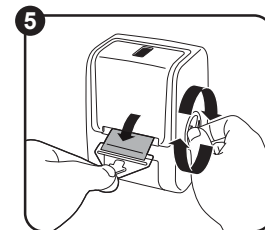
To assemble, simply remove the front and back panel of the machine.



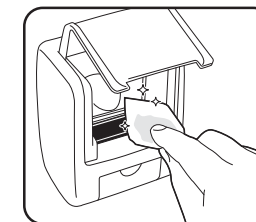
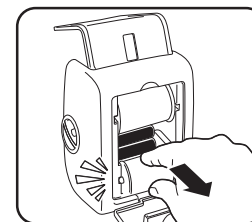
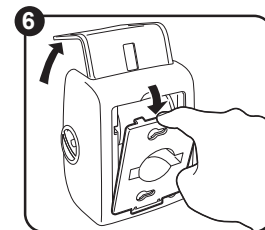
Get the roll of white sticker paper and clear laminate ready. Thread them onto the spools from both sides. Now hold the triangle-shaped plastic film. The side where the (↑) sticks out is the top side. Peel up both rolls. Stick the end tip of clear laminate onto the top side and the white sticker paper on the other side (bottom). Make sure both papers are centred and parallel to the red line of the plastic film.



Feed the rolls into the spindle with the (↑) heading in first. Push the laminate roll onto the top, and push the white roll below.



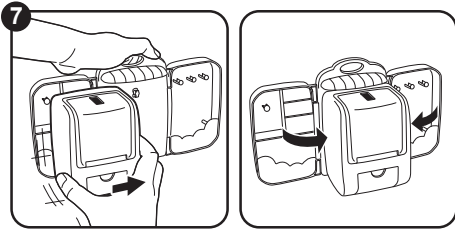
Now put the front and back panel back on. Turn the dial knob clockwise until the sticker rolls out. Cut straight across to the end. Now you're ready to make some stickers! Simply peel off the clear laminate when the sticker comes out the other end, and there you go, a sticker with your own design!



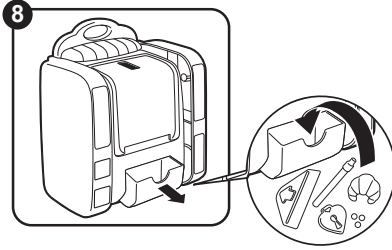
When you finish your rolls of stickers, empty the machine by pulling the rolls out. Insert the refill rolls following the above steps and start your craft project again!



Tip: If there's any adhesive stuck on the spindle, rub with alcohol wipes under the assistance of an adult.

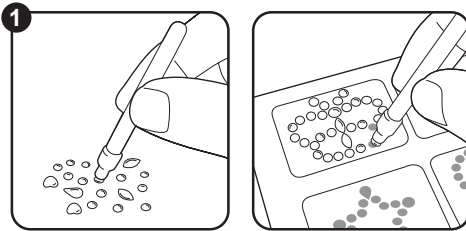


You can also put on the doors for storage. Slot the two pegs into the holes to make the back panel. Then pop both doors onto its hinge.

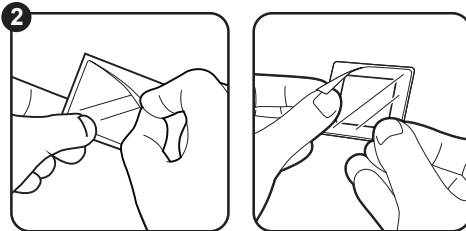


Use the storage compartment at the front to store your gems, the gem stylus and accessories.

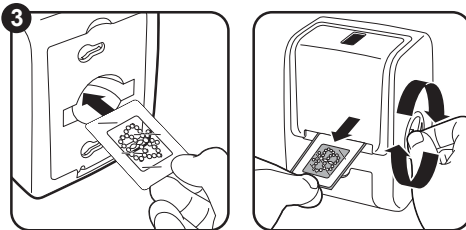
Start your gem art :



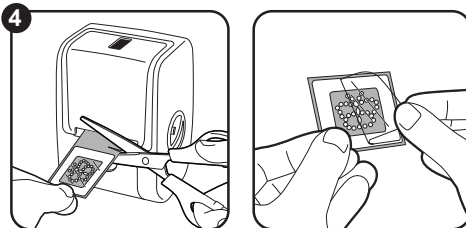
Pick up a gem with the gem stylus and lay it on the design however you like. Press firmly to adhere the gem to the artwork.



Once you've completed your gem art, peel back the film on the clear frame and stick the frame directly on the design.

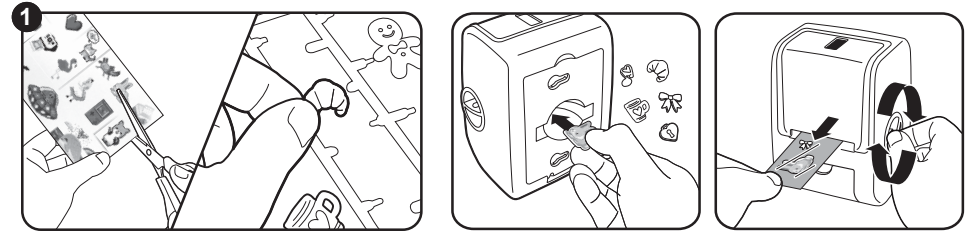


Thread the artwork through from the back of the sticker machine. Turn the dial knob clockwise to let it come out from the other end.

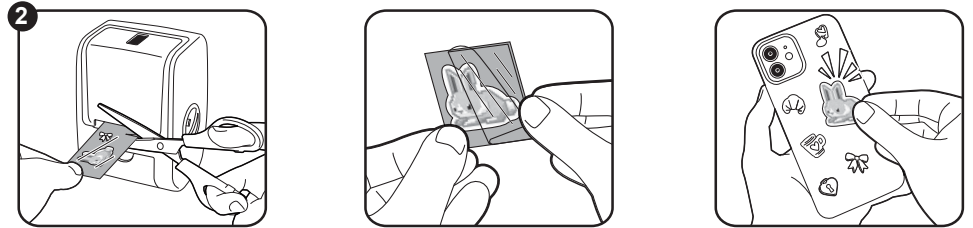


Cut the excess sticker off with scissors. Peel off the laminate backing and your dazzling sticker is ready!

Making stickers with templates :

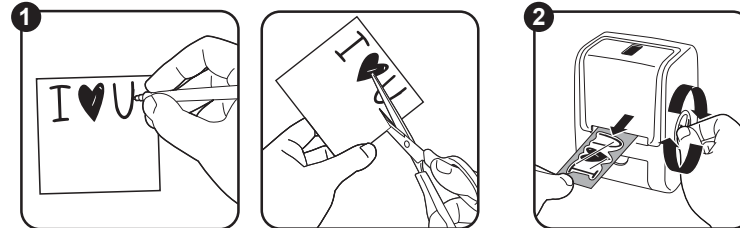


Choose the template and trim it along the line with scissors. Feed it through the machine from its back, turn the dial knob clockwise to thread it through to the other end.

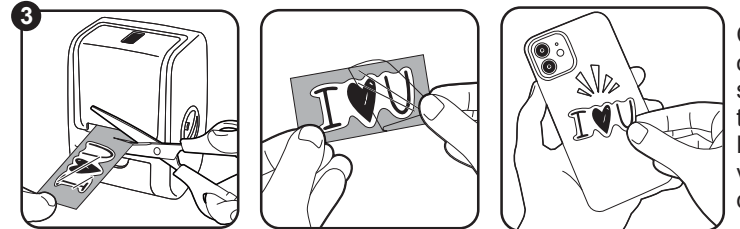


Cut the excess sticker off with scissors and peel off the laminate backing. Stick them onto wherever you want!

Create your own sticker :



Prepare a strip of paper (with maximum width 3.6cm). Draw and write anything as you desire.



Cut the excess sticker off with scissors with scissors and peel off the laminate backing. Now you have your very own sticker design!

DANGER OF TEARING OFF AND SWALLOWING SMALL PARTS. ADULT SUPERVISION REQUIRED. PRODUCT MAY VARY SLIGHTLY FROM IMAGE SHOWN. PLEASE KEEP THE PACKAGING FOR FUTURE REFERENCE.

WARNING: CHOKING HAZARD
SMALL PARTS. NOT FOR CHILDREN UNDER 3 YEARS

MADE IN CHINA
KEYCODE 43-449-897