

101.5 mm

79mm

BCM-1344 Facial Cleansing Brush

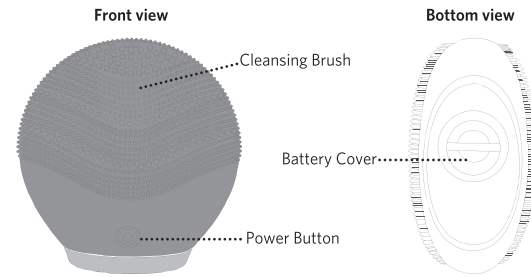
K: 43451647 T: 69994555



User Guide

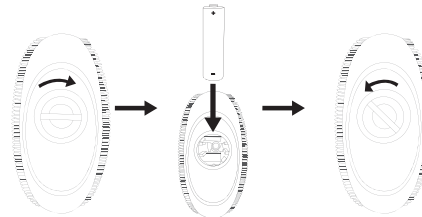
79mm

1 Overview



2 Installing the battery

1. Turn the battery cover clockwise to remove it from the main body.
2. Insert an "AAA, 1.5V" sized battery into the battery compartment, with the "-" negative pole facing downwards, and the "+" positive pole upwards.
3. Place the battery cover back onto the main body, and turn it counter-clockwise to lock.



EN 1

79mm

3 Instructions For Use

The cleansing brush can be used for deep cleansing, skin exfoliation, facial massage and can help to promote nutrient absorption on your face or other parts of your body, in order to help enhance blood circulation and improve skin condition.

1. After removing makeup, wet the cleansing brush and your face.
2. Take proper amount of cleanser, fully knead it for foam, and put foam on your face.
3. Press the power button to turn the device on.
4. As shown in the figures below, place and move the cleansing brush on your face in a circular motion.



5. When the cleansing is completed, press the power button to turn the device off.
6. Rinse and dry your face, then apply your favorite skincare products.
7. Clean the device after use (refer to the "cleaning" section).

4 Cleaning

Always clean the device thoroughly after use. Wash the brush surfaces with water and soap, do not rinse battery compartment in water. Dry the device (including its bottom) with a soft and dry cloth.

Note: Never use clay-based, silicone-based or grainy cleansers, exfoliators or scrubs, as they may damage the device's soft silicone touch-points.

EN 2

5 Specifications

Model Number/Name	BCM-1344 Facial Cleansing Brush
Materials	ABS+Silicone
Dimension	(64×35×67mm)
Weight	(53g)

6 Safety precautions

1. If you have a skin condition or any medical concerns, please consult a dermatologist before use.
2. Cleansing with the device should be comfortable - if you experience discomfort, discontinue use immediately and consult a physician.
3. Exercise particular care when cleansing the under-eye regions and do not bring the device into contact with the eyelids or eyes themselves.
4. For reasons of hygiene, we do not recommend sharing your device with anyone else.
5. Avoid leaving your device in direct sunlight and never expose it to extreme heat or boiling water.
6. Do not submerge this device in water.
7. Ideal temperatures are 0°C to 35°C. Avoid extreme temperatures.
8. Do not use the device outdoors during thunderstorms.
9. Keep out of reach of children. Children should be supervised to ensure that they do not play with this device. This device should not be used by persons with reduced physical, sensory or mental capabilities or lack of experience and knowledge, without supervision or instruction concerning the use of the device in a safe way and understanding the hazards involved, from a person responsible for their safety.
10. Discontinue use if this device appears damaged in any way.

EN 3

11. Do not use, store or transport the device where flammables or explosives are stored. Using your device in these environments increases the risk of explosion or fire.
12. Do not use any corrosive cleaner/oil to clean.
13. Do not place or store the device where it can fall or be knocked into a sink or bath.
14. Do not subject this device to mechanical force, impact, drop, etc.
15. Use this device only for its intended use as described in this manual.
16. Non-rechargeable batteries are not to be recharged. Rechargeable batteries are only to be charged under adult supervision. Rechargeable batteries are to be removed from the product before being charged. The supply terminals are not to be short-circuited. Remove battery from the product when not in use for extended time or when battery becomes exhausted. Dispose of batteries responsibly. Do not dispose of in fire.
17. Always switch the device off after use.
18. Do not place the device in a hot and humid environment for a prolonged period of time.
19. Remove battery if you do not use the device for long time.

Notice



This symbol means the product must not be discarded as household waste, and should be delivered to an appropriate collection facility for recycling. Follow local rules and never dispose of the product and batteries with normal household waste. Correct disposal of old products and batteries helps prevent negative consequences for the environment and human health.



EN 4

12 Month Warranty

Thank you for your purchase.

Your new product is warranted to be free from defects in materials and workmanship for the period stated above, from the date of purchase, provided that the product is used in accordance with accompanying recommendations or instructions where provided. This warranty is in addition to your rights under the Australian Consumer Law. For New Zealand customers, this warranty is in addition to statutory rights observed under New Zealand legislation.

We will provide you with your choice of a refund, repair (where possible) or exchange (availability dependent) for this product if it becomes defective within the warranty period. The business will bear the reasonable expense of claiming the warranty. This warranty will no longer apply where the defect is a result of alteration, accident, misuse, abuse or neglect.

Please retain your receipt as proof of purchase and contact our Customer Service Centre as listed below, for the entity you purchased this product from, for any difficulties with your product. Warranty claims and claims for expense incurred in returning this product can be addressed to the respective Customer Service Centre.

Our goods come with guarantees that cannot be excluded under the Australian Consumer Law. You are entitled to a replacement or refund for a major failure and compensation for any other reasonably foreseeable loss or damage. You are also entitled to have the goods repaired or replaced if the goods fail to be of acceptable quality and the failure does not amount to a major failure.

Contact for Kmart purchases	Contact for Target purchases
Kmart Australia Ltd. C/- Customer Service Centre 690 Springvale Road, Mulgrave Vic 3170 Customer Service: 1800 124 125 (Australia) or 0800 945 995 (New Zealand) or via Customer Help at kmart.com.au	Target Australia Pty Ltd C/- Customer Service Centre 2 Kendall Street, Williams Landing, Vic, 3027 Customer Service: 1300 753 567 or via Customer Help at target.com.au/help/contact-us

EN 5