

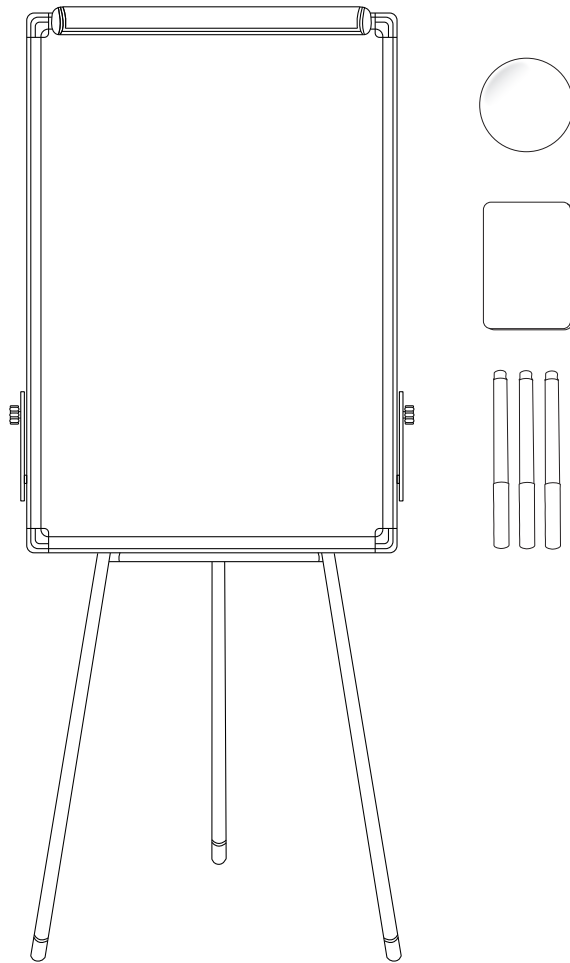
# anko

## Instruction manual

K: 43455607 | T: 70036282

Model: JLR-78640

### Portable Whiteboard with Stand



Please read all the information carefully before you use the product and keep the manual for future reference.

#### Warning:

Choking hazard small parts. Not for children under 3 years.

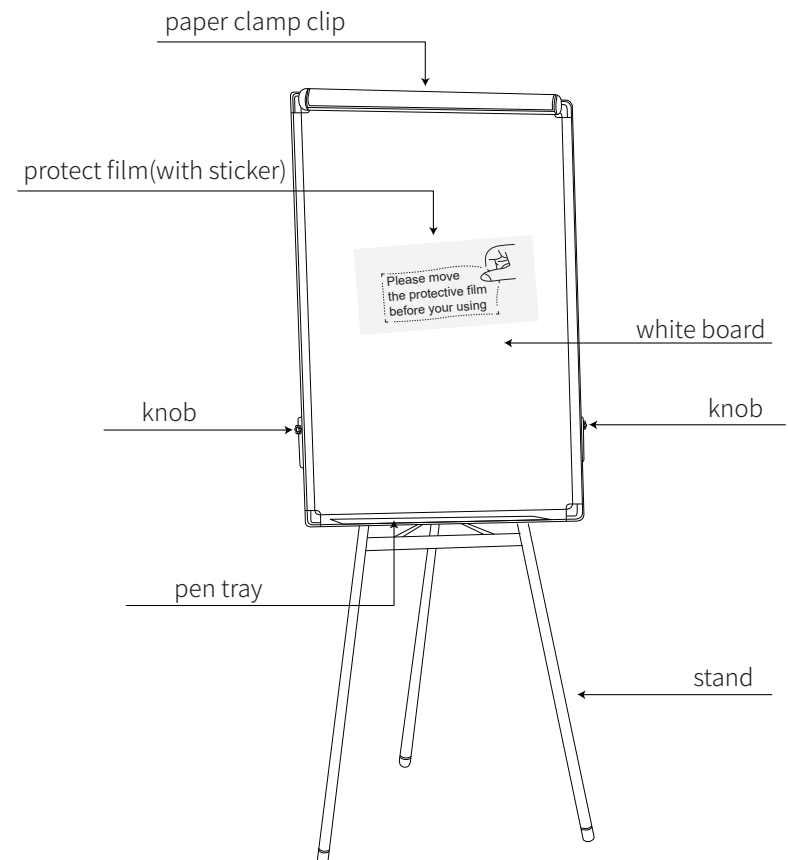
#### Warning:

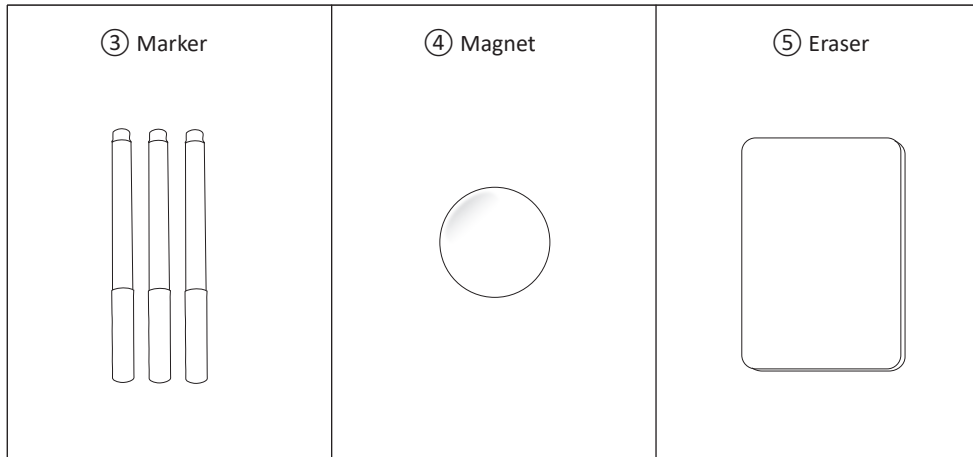
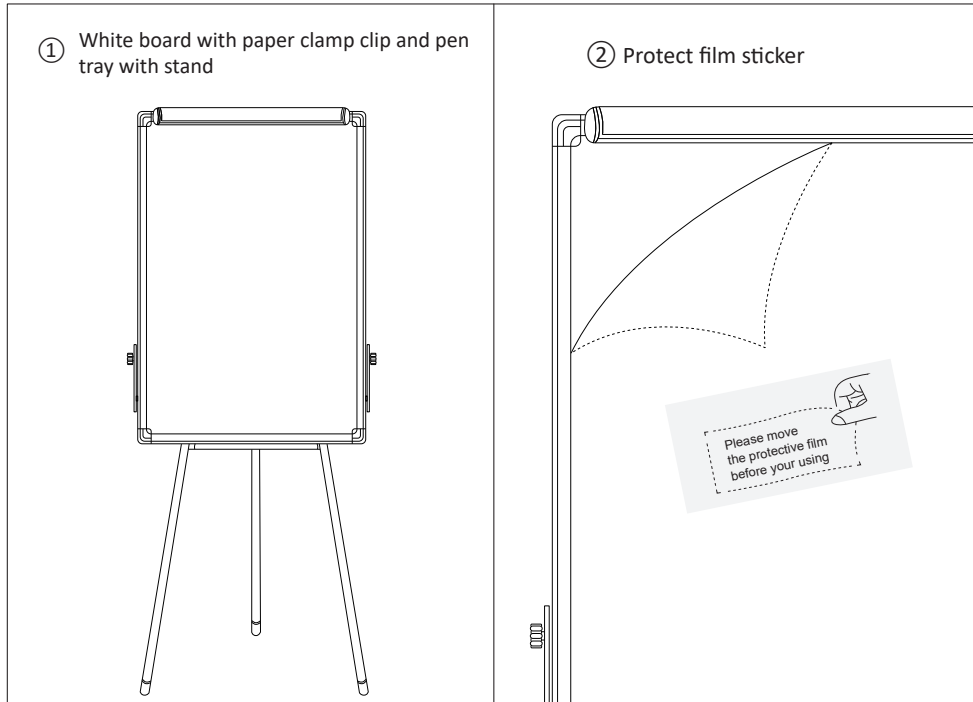
This product contains small magnets. Swallowed magnets can stick together across intestines causing serious infections and death. Seek immediate medical attention if magnet(s) are swallowed or inhaled.

#### Caution!

- Before using, please make sure that the stand body is firmly fixed, avoid the white board falling and causing injury.
- Do not place the white board in or near the water or other liquids to avoid the risk of the rust.
- Children should be supervised to ensure that they do not play with the appliance.

#### Product Overview

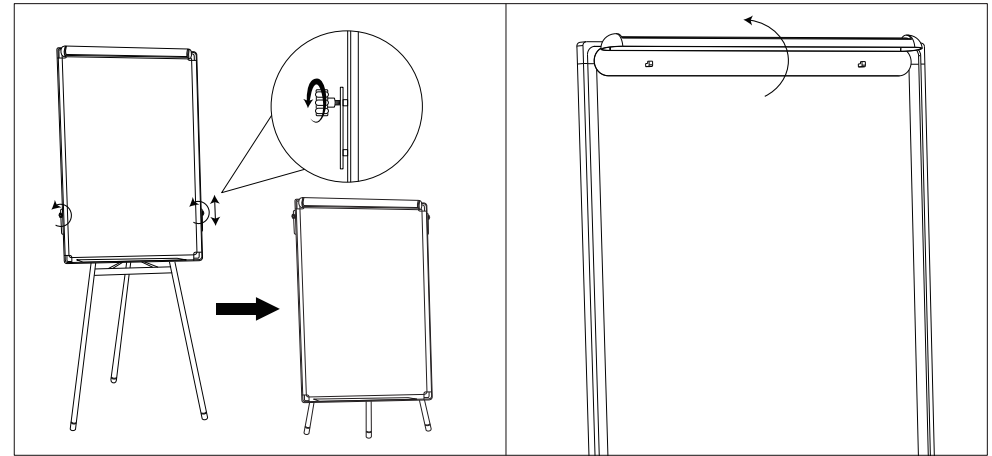




### Before using the flip chart

If you have using the flip chart for the first time, it is recommended that you should remove protect film before write on the white board.

### Adjustment



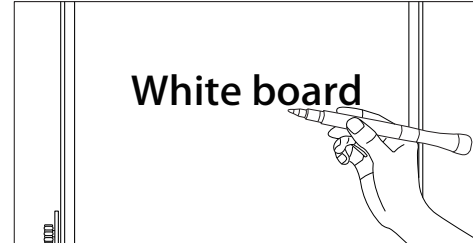
#### Height adjustment:

Before adjusting the height of the white board, rotate and release the knobs on both sides, move the white board, and then tighten the knobs on both sides to secure it at the height you need.

#### Paper clip usage:

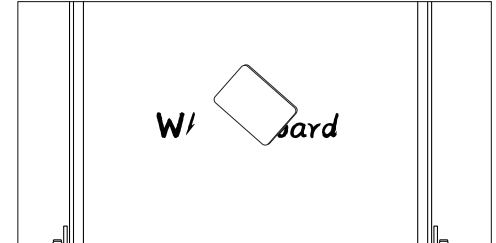
Open the clip upwards, position the paper properly, close the clip to secure the paper.

### Instructions for using accessories

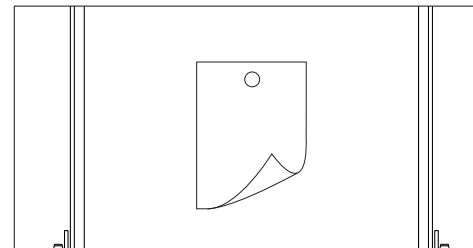


**Marker:** Open the lid of the marker and write directly on the white board.

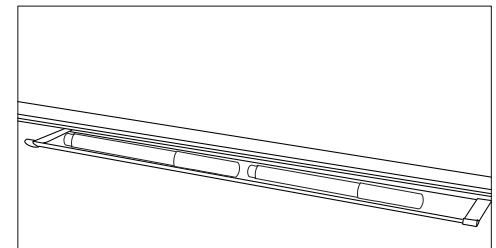
Note: When the ink of marker were used up, please buy a white board specific marker pen to replace.



**Eraser:** Hold the blue side and wipe the marker handwriting with the back side.



**Magnet:** Press the paper onto the white board with one hand, and fix the paper to the place by the magnet.  
**Pen tray:** Put the necessary items on the pen tray.



**Pen tray:** Put the necessary items on the pen tray.