

anko

Corded Stick Vac For Household Use Only



Model No.: S13
Rev 1

Note: The specifications and/or components of this appliance are subject to change without prior notice.

If any Accessories should fail during use, please call 1300 105 888 (Australia) or 09 8870 447 (New Zealand) for an immediate replacement. This will save you from returning the product to the store.

If we can assist you in any other way, please feel free to contact us.

1	IMPORTANT	3
2	Warnings	3
3	Safety Directions	3
4	Transporting your Vacuum	5
5	Components	6
6	Assembly as a Stick Vac	7
6.1	Attaching the Extension Tube	7
6.2	Removing the Extension Tube	7
6.3	Attaching the Floor Head	7
6.4	Removing the Floor Head	8
7	Assembly as a Hand Vac	8
8	Floor Head	8
9	Tools	9
10	Using the Vacuum Cleaner	9
10.1	On / Off	9
11	Emptying the Dust Canister	10
12	User Maintenance	11
12.1	Cleaning the Filter	12
12.2	Cleaning the Dust Canister	12
12.3	Cleaning the Vacuum Cleaner Body and Tools	13
13	Storage	13
13.1	Wall Mount	13
13.2	Vacuum Cleaner / Tool	14
14	Troubleshooting	15
16	Warranty Against Defect	16

1 IMPORTANT

Please note: the filters, dust canister and components must be kept clean and free from blockages, etc.

Failure to keep them clean and well-maintained will reduce the performance of your vacuum cleaner and may cause the motor to overheat.

Please refer to the “User Maintenance” Section for further instructions on cleaning.

2 Warnings

Before using this appliance, read and follow all warnings and instructions in this manual, even if you are familiar with this product.

This appliance is not intended for use by persons (including children) with reduced physical, sensory, or mental capabilities, or lack of experience and knowledge unless they have been given supervision or instruction concerning the use of the appliance by a person responsible for their safety.

Children should be supervised to ensure that they do not play with the appliance.



CAUTION: The vacuum cleaner handle contains electrical connections. The handle is not a serviceable part.



3 Safety Directions



Please read this instruction manual carefully before first use. It is advisable to keep this instruction manual for future reference.

DO NOT vacuum water, wet objects, liquids, ashes, hot coals, cigarette butts, matches or any hot, smoking or burning objects etc.

DO NOT pick up flammable or combustible materials (i.e., lighter fluid, petrol, kerosene, etc.) or use in the presence of explosive liquids or vapour.

DO NOT pick up toxic material (i.e., chlorine bleach, ammonia, drain cleaner, etc.)

DO NOT vacuum Toner (for laser printers, copy machines etc.) as there is a risk of fire and explosion.

DO NOT vacuum plaster dust, cement dust etc. as the filter will block very quickly.

DO NOT use the vacuum without the filter fitted.

DO NOT store or use the appliance near high-temperature areas.

DO NOT run over the power cord with the vacuum cleaner.

DO NOT use the vacuum cleaner if it is blocked. Turn off and clear all blockages before continuing.

DO NOT use the vacuum cleaner with a blocked filter. Clean the filter before continuing. (refer to User Maintenance section).

DO NOT use the vacuum cleaner if the appliance malfunctions, abnormal noise, smells, or smoke, is dropped or damaged in any manner or if any breakage is found during the operation.

For electrical safety, any repairs to the product must be performed by a qualified electrical person only, or the product must be disposed of.

DO NOT misuse the Power Cord. Never pull the appliance by the cord or pull to disconnect it from the outlet. Instead, grasp the plug and pull to disconnect.

DO NOT use the vacuum cleaner to pick up large objects, hard or sharp objects such as glass, nails, screws, coins, etc. that are likely to cause damage.

DO NOT use with damaged Cord or Plug.

If the supply cord is damaged, it must be replaced by the manufacturer, its service agent, or similarly qualified persons in order to avoid a hazard.

DO NOT use the vacuum cleaner if it has been dropped, damaged, left outdoors, or dropped into liquid (water etc.)

DO NOT handle the vacuum cleaner with wet hands.

DO NOT put any objects into openings.

DO NOT use with any openings blocked and do not restrict airflow.

DO NOT attempt to modify this product in any way.

DO empty the Dust Canister regularly for optimal operation of the vacuum.

DO keep hair, loose clothing, fingers, feet, and body parts away from openings or moving parts.

DO turn off controls before you connect or disconnect the appliance to or from the mains supply.

DO disconnect the appliance from the power supply when not in use, before changing the dust filter, cleaning the filters, or connecting / disconnecting the accessories.

DO use only on dry, indoor surfaces.

DO use only as described in this manual. Use only the manufacturer's recommended attachments.

DO Keep the Cord away from heated surfaces.

DO Keep all openings free of dust, lint, hair, and anything that may reduce airflow.

DO use extra care when vacuuming on stairs.

DO keep your work area well-lit.

DO store your appliance indoors in a cool dry area.

DO ensure children and babies cannot play with plastic bags or any packaging materials.

DO operate the appliance from a power source of the same voltage, frequency and rating as indicated on the product identification plate.

If a third party uses this appliance, **DO** supply the instruction manual with it.

No liability can be accepted for any damage caused by non-compliance with these instructions or any other improper use or mishandling of the appliance.

This product has not been designed for any uses other than those specified in this manual.

ONLY for domestic use. Industrial or commercial use invalidates the warranty.

Read and Save These Instructions

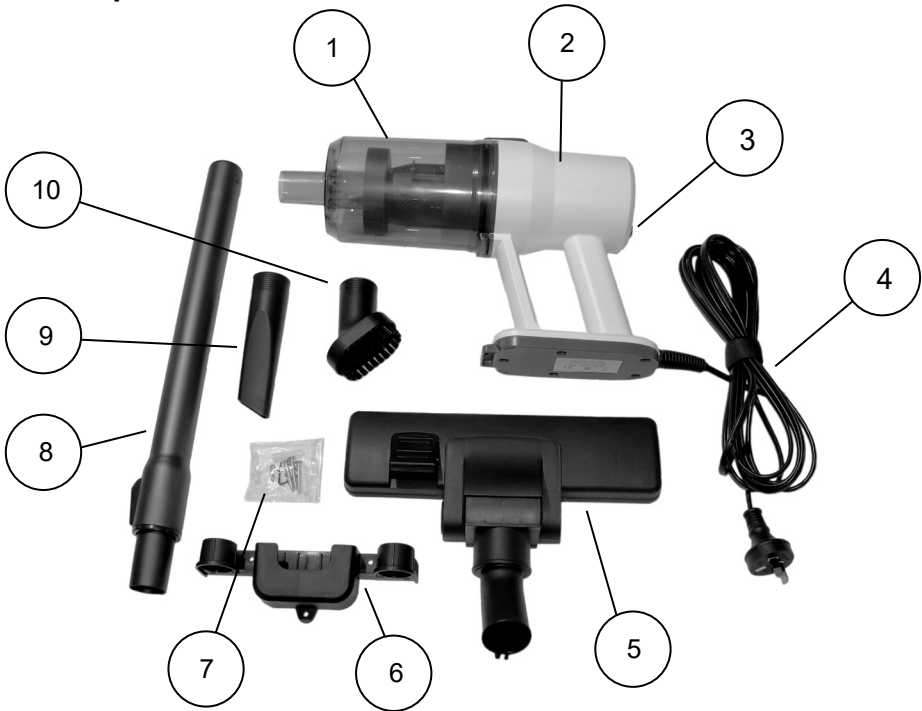
4 Transporting your Vacuum

To move your vacuum cleaner from room to room, unplug the unit and carry using the carry handle.

Never pull or carry the vacuum cleaner by its power cord.

Never carry the vacuum cleaner with the accessories / Tools.

5 Components



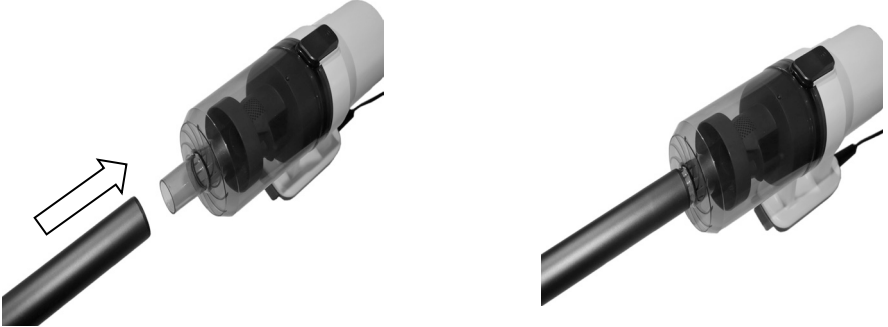
1	Dust Canister	6	Wall Mount / Tool Holder Bracket
2	Motor Housing	7	Wall Mount Plugs and Screws
3	On / Off Button	8	Extension Tube
4	Power Cord	9	Crevice Tool
5	Floor Head	10	Brush Tool

Note: The specifications and/or components of this appliance are subject to change without prior notice

6 Assembly as a Stick Vac

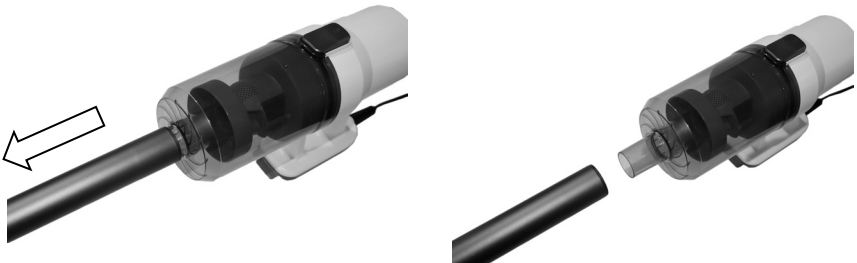
6.1 Attaching the Extension Tube

Insert the bigger top end of the Extension Tube onto the mating spigot at the end of the dust canister, then push on hard until it seats in place.



6.2 Removing the Extension Tube

To remove the Extension Tube, grasp tightly then pull the tube straight out.



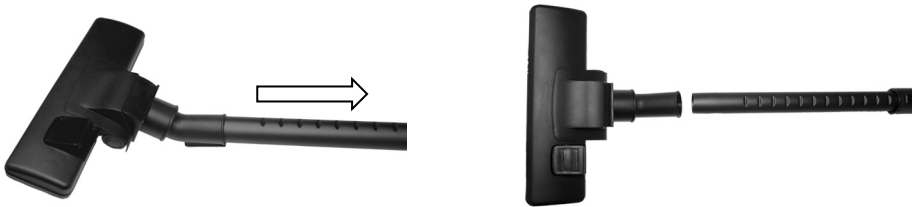
6.3 Attaching the Floor Head

To attach the floor head to the other end of the extension tube, insert the end of the Extension Tube into the end of the Floor Head, then push in hard until it seats in place.



6.4 Removing the Floor Head

To remove the Floor Head, grasp the tube and floor head and then pull the tube straight out.



7 Assembly as a Hand Vac

The vacuum cleaner can be used without the extension tube by attaching the Accessories and Floor Head directly to the vacuum cleaner.

To attach and remove, follow the same steps as if using the Extension tube.



8 Floor Head

The floor head is adjustable to suit either hard floors or carpets.

The floor head has two settings. When cleaning hard surfaces (parquet flooring, tiles, etc.), the floor head brushes should be extended.

When cleaning carpets and rugs, the brushes should be retracted into the floor head.

Press the brush change lever to switch between the two settings.



9 Tools

The Crevice tool is for cleaning into corners etc. and the brush tool is for cleaning furniture etc.

To fit the tools, line up with the spigot on the end of the hand vac and push on hard.

Note: The tools can also be used on the end of the Extension Tube.

To remove, grasp the tool and then pull the tool straight off.



10 Using the Vacuum Cleaner

10.1 On / Off

To use the Vacuum Cleaner, assemble the unit as previously instructed.

Insert the mains plug onto the power point and switch on.

Press and release the On/Off button located on the back of the vacuum cleaner head to turn the vacuum cleaner on.

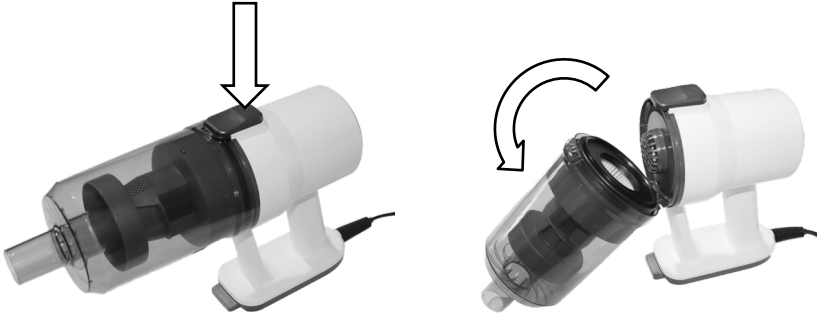


To switch off, press and release the button again.

11 Emptying the Dust Canister

To Empty the dust canister, take the vacuum cleaner to a dustbin.

Press the release button on top of the dust canister and the dust canister will release from the vacuum cleaner body.



Unhook the dust canister then pull the filter out.



Whilst holding the dust canister over a bin, grasp and swing up the wire handle of the filter holder and pull it out of the dust canister.



Tip out the debris from the dust canister and clean away any hairs etc. from the filter holder then reassemble in the reverse order.

Tap the filter on the inside of the bin to dislodge the dust and debris, then refit to the dust canister.



Refit the dust canister to the vacuum cleaner body by hooking the back of the dust canister to the vacuum cleaner and then swing up to lock in place.



Empty the Dust Canister as frequently as possible or when the suction power is reduced or after use for optimum performance.

12 User Maintenance

NOTE: To maximise the performance of your vacuum cleaner, you should clean the filter regularly.

If the filter is broken or worn, replace it before continuing to use the vacuum.

A new filter can be purchased from our Customer Service. You can call our customer service number: 1300 105 888 (Australia) and 09 8870 447 (New Zealand), or via email info@hegroup.com.au

12.1 Cleaning the Filter

Important Note – The Filter must be cleaned regularly for the best suction performance and to prevent overheating and damage to your vacuum cleaner.

Cleaning is best done at the same time when emptying the dust Canister after you have finished vacuuming for the day.



NOTE: Never use the vacuum cleaner with a wet or damp filter or without the filter fitted.

Using a wet or damp filter will damage the filter, may cause severe damage to the vacuum cleaner, and will void your warranty.

Only wash the filter if it is very dirty, otherwise, just tap the edge of the filter on a solid surface to dislodge any dust and debris.

To access the filter, refer to the section “Emptying the Dust Canister.”

If needed, wash the filter and filter holder in warm mild soapy water, rinse them in clean fresh cold water and let them completely dry.

DO NOT scrub the filter or filter holder or place them in a dishwasher.

DO NOT use a hairdryer to dry the filter or filter holder.

Refit the filter holder and then refit the filter (or replace it with a new one) in the reverse method used for disassembly.

12.2 Cleaning the Dust Canister

Remove the dust canister and remove the filter and filter holder as described previously.

Wash the dust canister in warm mild soapy water, rinse in clean fresh cold water and let completely dry.

DO NOT scrub the dust canister or place it in a dishwasher.

DO NOT use a hairdryer to dry the dust canister.

12.3 Cleaning the Vacuum Cleaner Body and Tools

Do not clean the vacuum cleaner, floor head, components or accessories using petrol or any other flammable liquid or solvents, etc.

Clean only the outside of the vacuum cleaner.

Use only a moist cloth and mild detergent for cleaning the vacuum cleaner, components, and accessories.

After cleaning, wipe off the moisture on the vacuum cleaner, components, and accessories with a dry cloth.

Do Not place accessories / components in a dishwasher.

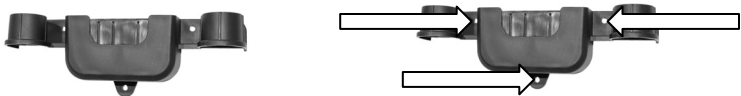
13 Storage

13.1 Wall Mount

There is a Wall Hanging Bracket with a Tool Holder supplied with screws and wall plugs should you prefer to hang the vacuum cleaner on the wall.

To install the Wall Bracket, position the Wall Bracket on the wall, and at a suitable height where the vacuum cleaner will not touch the floor.

Mark the screw holes through the Wall Bracket onto the wall.

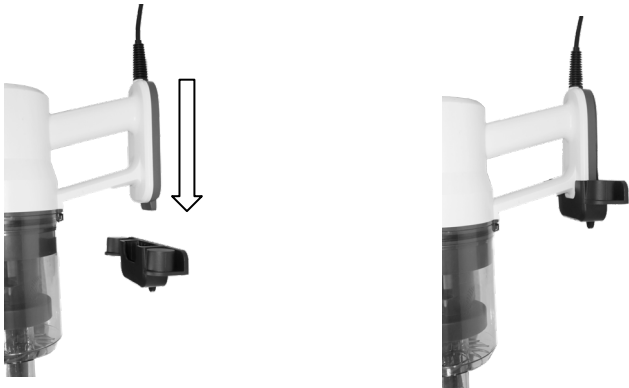


Using a suitable drill (wood drill bit for a timber wall, or masonry drill bit for brick / concrete walls), drill holes $\text{\O}6\text{mm}$ and 35 - 40mm deep.

Insert the plastic wall plugs into each hole and gently hammer in until they are flush with the wall, place the Wall Bracket over the holes then insert the screws and tighten up. Do Not Overtighten.

If mounting on a Sheet Plaster wall, use the screw-in Wall plugs.

Hang the vacuum cleaner as shown:



13.2 Vacuum Cleaner / Tool

When finished using the vacuum cleaner, empty the dust canister and clean the filter.

Store the Tools on the wall mount bracket as shown.



14 Troubleshooting

Will Not Switch On	Check that the appliance is plugged in and switched on.
	Press and release the On/Off button located on the back of the vacuum cleaner head to turn the vacuum cleaner on.
	<p>The Motor has overheated.</p> <p>Clean the filter and dust canister then allow appliance to cool for at least 1 hour. Check for blockages and unblock.</p> <p>Please call 1300 105 888 to order a new Filter.</p>
Noisy operation	Clean the filter and empty the Dust Canister
	Check for partial blockages and unblock.
Suction Not Strong	<p>Clean the filter and empty the Dust Canister.</p> <p>Check for blockages and unblock.</p> <p>Please call 1300 105 888 to order a new Filter.</p>
Floor Head hard to push	<p>Due to the strong suction of your vacuum cleaner, it may be difficult to push, especially over thick carpet. Rather than forcing the Floor Brush, lift the Floor Brush momentarily to allow air to flow into the vacuum releasing the built-up suction pressure, then continue vacuuming.</p> <p>The Floor Head brush may be extended when using on a carpet. Retract the brush.</p>
Static Shock	<p>In some rare instances, one or two users may feel an electric discharge when touching or using the vacuum cleaner during or after use. This is a well know phenomenon of Static Electricity discharge that happens mostly when the user vacuums a synthetic fibre carpet or other synthetic surfaces. It can also be more prevalent in dry and cool environments. Although the feeling of Static Electricity can be unpleasant for the user, it is not dangerous and is not a fault of the vacuum cleaner. If this static discharge is a problem for the user, the user could try wearing insulating footwear during vacuuming (i.e., rubber or leather soles) or increase the humidity / heat level in the surrounding environment or both.</p>

16 Warranty Against Defect

12 Month Warranty

Thank you for your purchase.

Your new product is warranted to be free from defects in materials and workmanship for the period stated above, from the date of purchase, provided that the product is used in accordance with accompanying recommendations or instructions where provided. This warranty is in addition to your rights under the Australian Consumer Law. For New Zealand customers, this warranty is in addition to statutory rights observed under New Zealand legislation.

We will provide you with your choice of a refund, repair (where possible) or exchange (availability dependent) for this product if it becomes defective within the warranty period. The business will bear the reasonable expense of claiming the warranty. This warranty will no longer apply where the defect is a result of alteration, accident, misuse, abuse, or neglect.

Please retain your receipt as proof of purchase and contact our Customer Service Centre as listed below, for the entity you purchased this product from, for any difficulties with your product. Warranty claims and claims for expenses incurred in returning this product can be addressed to the respective Customer Service Centre.

Our goods come with guarantees that cannot be excluded under the Australian Consumer Law. You are entitled to a replacement or refund for a major failure and compensation for any other reasonably foreseeable loss or damage. You are also entitled to have the goods repaired or replaced if the goods fail to be of acceptable quality and the failure does not amount to a major failure.

Contact for Kmart purchases	Contact for Target purchases
Kmart Australia Ltd. C/- Customer Service Centre, 690 Springvale Road, Mulgrave Vic 3170 Customer Service: 1800 124 125 (Australia) or 0800 945 995 (New Zealand) or via Customer Help at kmart.com.au	Target Australia Pty Ltd. C/- Customer Service Centre, 2 Kendall Street, Williams Landing, Vic, 3027 Customer Service: 1300 753 567 or via Customer Help at target.com.au/help/contact-us

IMPORTANT! For all technical queries or difficulties in operating the product and for spare parts, contact H.E. Group customer service 1300 105 888 (Australia) and 09 8870 447 (New Zealand).