

260mm

Coffee Maker

KC:43473847



SCAN THIS QR CODE TO WATCH COFFEE MAKE INSTRUCTIONS

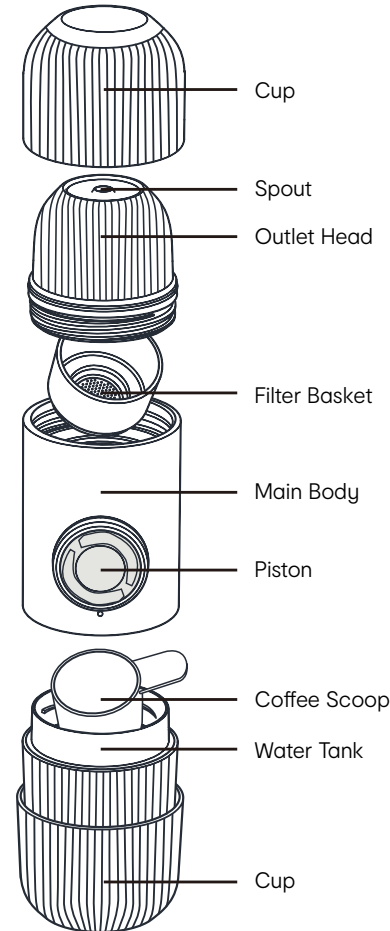
Made in China

Safety Precautions

Please read the following points and the instructions for use to avoid personal injury or damaging the Espresso Maker.

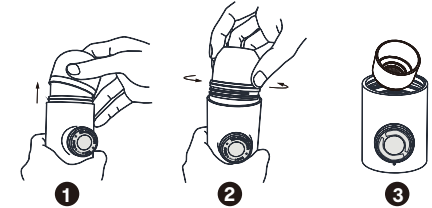
- This Portable Espresso Maker is for personal use only.
- Ensure you have all the correct accessories of the Portable Espresso Maker once you open the package.
- Please keep out of reach of children.
- Do not let children operate this Portable Espresso Maker.
- Children should be supervised to ensure that they do not play with the Portable Espresso Maker.
- Avoid putting the Portable Espresso Maker in or on any heat source such as ovens, microwaves, gas or electric hotplates or dishwashers.
- Only use water in the water tank, do not use other liquids such as milk.
- Do not exceed the 80 mL maximum capacity of the water tank.
- Do not run the Portable Espresso Maker twice without emptying the extracted coffee in the cup or it will overflow.
- Please clean the Portable Espresso Maker carefully after each use, wash the accessories with dish washing detergent and water, use a dry cloth to clean the body of the Portable Espresso Maker.
- Do not immerse the body of the Portable Espresso Maker in water or any kind of liquid.
- Do not attempt to open and repair the Portable Espresso Maker by yourself, as this will void the warranty.
- Do not operate the Portable Espresso maker while driving.

Parts List

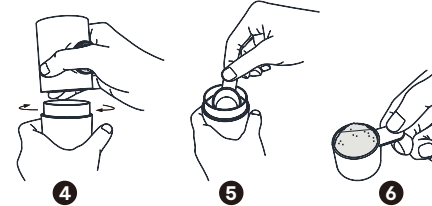


Operation

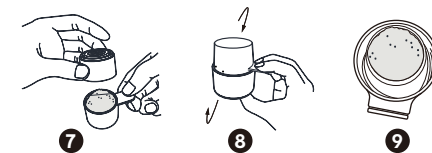
1. Unclip the cup out to expose the outlet head.
2. Twist the outlet head until loose and remove.
3. Pull out the filter basket from the main body.



4. Unclip the cup, Twist the water tank on the bottom and remove from the main body.
5. Remove the supplied coffee scoop from inside the water tank.
6. Fill the coffee scoop with ground coffee (not included).

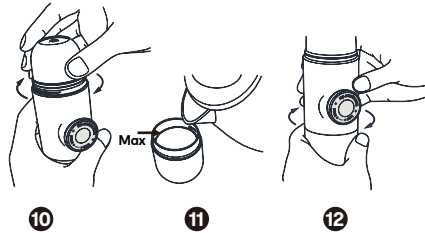


7. Place the filter basket on top of the coffee scoop, ensuring the filter basket covers the top of the coffee scoop.
8. Flip the coffee scoop and filter basket over, so the ground coffee transfers to the filter basket.
9. Place the filter basket back inside the main body.



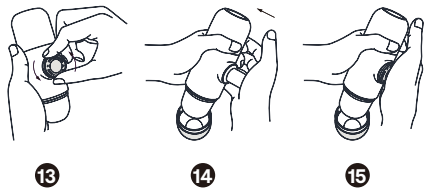
150mm

10. Twist the outlet head back into the main body, ensuring it is securely locked in.
11. Add heated water from the kettle into the water tank (do not go beyond the steps).
12. Twist the water tank back onto the main body, ensuring it is securely locked in place.



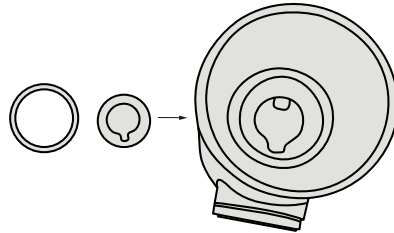
WARNING: WHEN POURING HOT WATER FROM THE KETTLE, MAKE SURE THE TANK IS IN A STABLE STATE, PLACED ON A FLAT SURFACE, AND HANDLED WITH CARE. IN THIS PROCESS, THE HOT WATER SHOULD NOT EXCEED THE STEPS, AND BE CAREFUL TO AVOID BURNING YOURSELF WHEN THE HOT WATER SPILLS DURING ASSEMBLY.

13. Slightly push the piston in and then twist the piston anti-clockwise to unlock, the piston will protrude out.
14. Flip the coffee maker upside down, place over the cup and continuously press the piston to release the coffee.
15. Continue pressing the piston until no more coffee comes out.

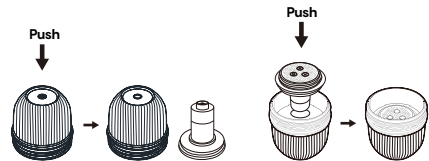


Cleaning the Portable Espresso Maker

- Once you finished using the product, you must clean every time after use.
- Use warm water to clean all coffee residue.
- For outer areas of the product, it is recommended to clean with a soft damp cloth.
- If the washer drops from the main body during cleaning, reinstall the washer to its original position.



WARNING: DO NOT PUT ANY WATER IN THE SHADED AREAS IN RED. DO NOT PUT ANY PARTS OF THIS PRODUCT INTO A DISHWASHER.



Press the spout firmly to remove the filter for cleaning (be careful not to drop it).

Align the filter with the outlet and press firmly to complete the installation.



Troubleshooting

Problem	Solution
Why is my espresso weak?	Adjust the grind size to make it finer and ensure you're using the right amount of coffee grounds for a stronger brew.
How can I clean my portable coffee maker?	Disassemble the components and clean with warm water. Use a brush to clean the filter basket and regularly descale to prevent mineral buildup.
Why is my coffee maker leaking water?	Check the seals and gaskets for wear and ensure all connections are tight. A leaking coffee maker may also indicate a damaged component that needs replacement.
Can I use pre-ground coffee with my portable coffee maker?	Yes, you can use pre-ground coffee, but freshly ground beans often yield better results. Ensure the grind size is suitable for espresso.
Why is my coffee maker unable to lock or unlock?	Slightly push the piston inward and then twist the pump anti-clockwise to unlock. The piston will protrude out. After finished using this product, push the piston in and twist clockwise to lock.