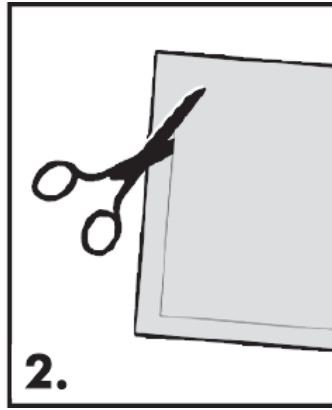


WINDOW FILM INSTRUCTION MANUAL

Installation Steps:



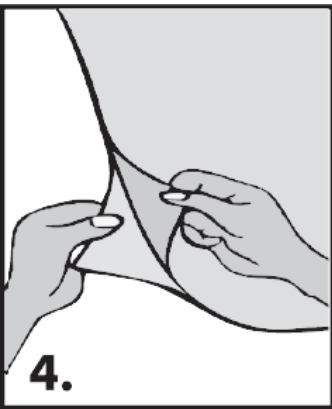
Clean your window thoroughly. Measure the size of your window both width & length.



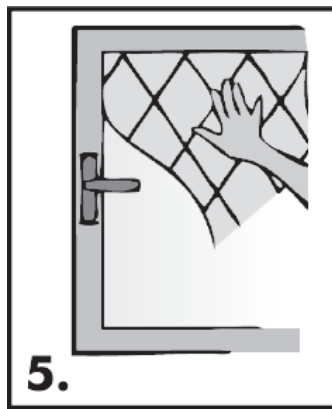
Cut film into proper size, approximately 1 inch larger than the window.



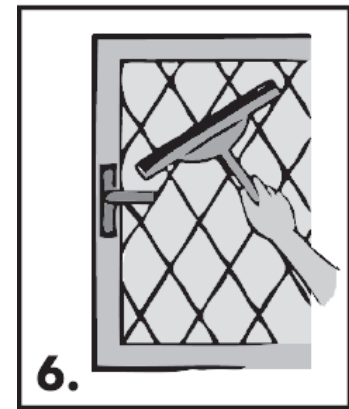
Spray water, wet the window completely.



Peel off the backing clear protective film gently.



Position the film against the window and use your finger to press across the entire top of the film to allow it to slightly grip.



Smooth out the film with the squeegee, ensuring there are no air bubbles. Dry off the window with the towel.

Installation Tips:

- ◆ The window film is only suitable for indoor, flat, smooth and clean glass. For example, the interior surfaces of windows and glass doors, glass office partitions, and bathroom glass.
- ◆ Remove the transparent backing, and place the smooth side of the film to the window.
- ◆ Spraying a lot of soapy water is the key point, the more water the better.
- ◆ It is recommended that installation be completed by at least 2 people

Recommended Tools: (not provided with product)

Squeegee,
Measuring Tape,
Stainless Steel Ruler.
Scissors (Razor Knife),
Scraper (Credit Card),
Spray Bottle,
Lint Free Towel.