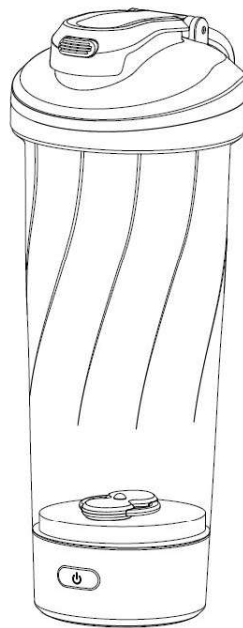


# anko

## PROTEIN SHAKE MIXER

### Instruction Manual



Model No.: APS06B & APS06G

Rev 01

To ensure the proper operation of this appliance, please read this instruction manual carefully before using the appliance and keep them for further reference.

## IMPORTANT SAFEGUARDS



Read all instructions thoroughly before first use, even if you are familiar with this type of product. The safety precautions mentioned in this manual reduce the risk of burns, fire, electric shock, and injury when correctly followed. Keep this manual in a safe place for future reference, along with the purchase receipt and packaging. If applicable, pass these instructions onto the next owner of this appliance.

### Explanation of Symbols



This signal symbol/word designates a hazard with moderate risk, which may result in death or severe injury if not avoided.



This signal symbol/word designates a hazard with low risk, which may result in minor or moderate injury if not avoided.



This signal word warns of possible damage to property.



This symbol provides you with useful additional information about assembly or operation.



## Risk of injury!

If you do not use the product properly, there is an increased risk of injury.

- This product is not intended for use by persons (including children) with reduced physical, sensory or mental capabilities, or lack of experience and knowledge, unless they have been given supervision or instruction concerning the use of the product by a person responsible for their safety.
- Children should be supervised to ensure that they do not play with the product.
- Avoid contact with the moving parts of the product.
- It must only be used with the battery charger as per the corresponding markings on the product.
- This product contains batteries that are non-replaceable.
- Always disconnect the product from the mains supply if it is left unattended and before assembling, disassembling or cleaning.
- Switch off the product before changing accessories or approaching parts that move during operation.
- The product has the potential to cause injury from misuse. Improper installation and the use of accessories not recommended by the manufacturer may result in personal injury.
- Care shall be taken when emptying the bottle, handling the magnetic stirrer during cleaning.

**WARNING! DO NOT pour any hot liquid into the product. If hot liquid is poured in it can be ejected from the product due to sudden steaming.**

- Regarding operating time and rest time, refer to "Operating Instructions".
- Regarding the instructions for cleaning surfaces in contact with food, refer to "Cleaning and Maintenance".
- The product must not be operated with an external timer or separate remote-control system.
- Make sure that children do not play with the plastic wrapping. They may get caught in it when playing and suffocate.
- This product is intended to be used in household and similar applications such as:
  - staff kitchen areas in shops, offices and other working environments;
  - farm houses;
  - by clients in hotels, motels and other residential type environments;
  - bed and breakfast type environments.



### **Risk of electric shock!**

A faulty electrical installation, excessive line voltage, or incorrect operation may result in an electric shock.

- The product is designed for domestic use only and should not be used for commercial or industrial purposes.
- Only connect the USB charging cable if the line voltage of the socket corresponds to the data on the rating plate.
- Only connect the USB charging cable to an easily accessible socket so that you can quickly disconnect it from the power supply in the event of a problem.
- Do not use the product if it is damaged.
- **WARNING!** For the purpose of recharging the battery, only use the USB charger with DC 5V output and 1A output to charge this item. Disconnect the USB cable after the charging is complete.
- Do not open the housing; instead, have a qualified professional perform repairs. Contact a qualified workshop for this. Liability and warranty claims are waived in the event of repairs performed by the user, improper connection or incorrect operation.
- Only parts that come with the original device should be used for repairs. This product contains electrical and mechanical parts which are essential for providing protection against sources of danger.
- Do not immerse the motor base in water or other liquids.
- Never touch the USB charging cable with wet or damp hands.
- Keep the product and the USB charging cable away from open flames and hot surfaces.
- Lay the USB charging cable so that it does not pose a tripping hazard.
- Do not kink the USB charging cable and do not lay it over sharp edges.
- Only use the product indoors. Do not use the product in damp rooms or in the rain.
- Do not place the product such that there is a risk of it falling into a tub or sink.
- Never insert any objects into the housing.
- Always switch the product off and unplug it when you are not using it, when you intend to clean it, or in the event of a malfunction.



### **Risk of injury!**

If you do not use the product properly, there is an increased risk of injury.

- If you notice any smoke, unusual noises or strange smells, switch off the product immediately. If this occurs, do not continue to use the product and have it checked by an expert.
- Use only the original and provided accessories of the product. The use of attachments not recommended or sold by the manufacturer may cause fire, electric shock or injury.
- Keep hands and utensils away from moving blades when stirring to reduce the risk of severe injury to persons or damage to the product.
- Ensure all parts are installed correctly and locked into place before operation.

## NOTICE!

### Risk of damage!

Improper handling of the product may result in damage to the product.

- Do not use this product in continuous operation. Allow the product to cool down to an ambient temperature before using it again. There is a risk of overheating if the product is operated for longer periods.
- Never use the product near curtains, walls, under cupboards or near other flammable materials.
- Do not place the product at the edge of the working surface.
- Never place the product on or close to sources of heat. Keep the product away from open flames, direct sunlight, hot surfaces, or extreme temperatures.
- Do not use the product and its accessories when deformities, cracks or damages are found.
- Do not make any modifications to the product. Any changes to the product that have not been expressly authorised by the manufacturer may lead to the user's warranty being rendered null and void.
- Do not use the product if the magnetic stirrer is damaged.
- **WARNING! Do not use the product to process overly hard food (such as ice cubes, nuts, fruits).**
- **WARNING!** The batteries in the product shall not be exposed to excessive heat such as sunshine, fire or the like.
- The batteries in the product are non-replaceable.



### WARNING!

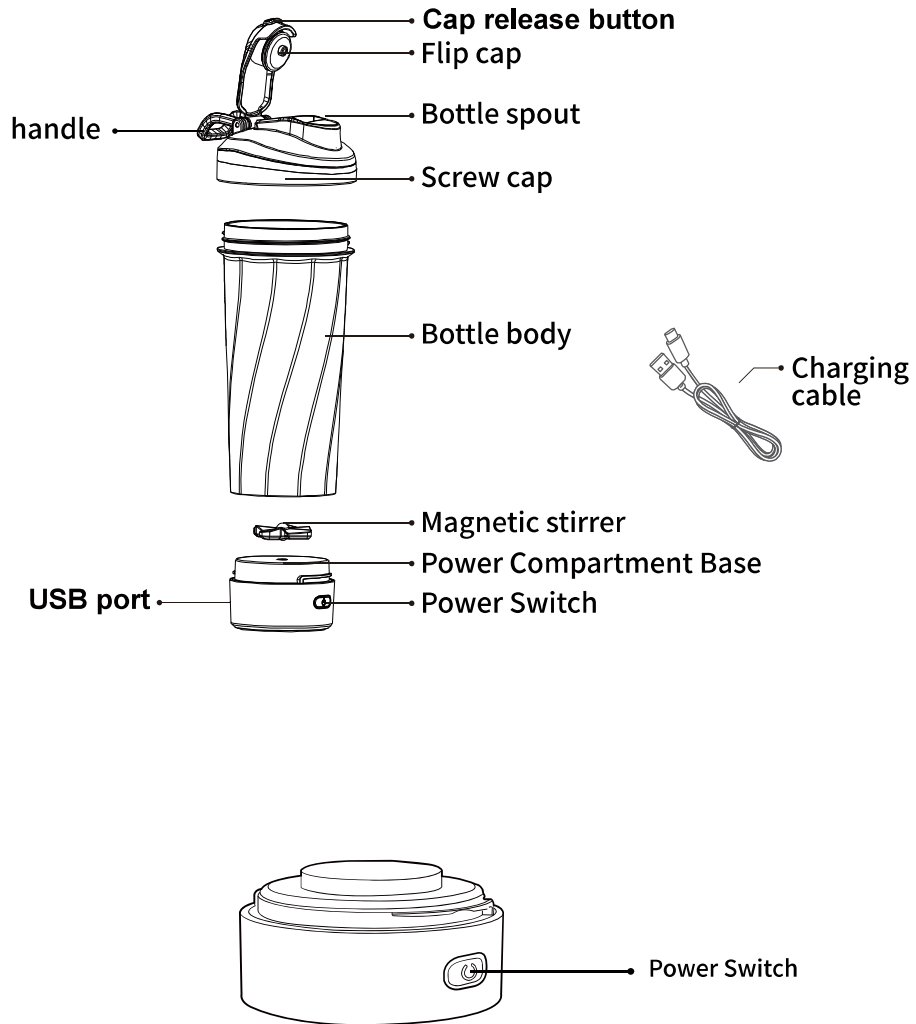
- To reduce the risk of electric shock, do not immerse or expose the product, flexible cord or plug to rain, moisture, or any liquid.
- Do not use the product near baths, basins or other vessels containing water or other liquids, or when standing in or on damp or wet surfaces.
- In the event that the appliance is dropped into water, turn off the power at the power outlet and remove the plug immediately.

**DO NOT REACH INTO THE WATER TO RETRIEVE IT UNTIL IT HAS BEEN DISCONNECTED FROM THE POWER OUTLET.**

- It is important to note that the appliance will have to be inspected by a qualified technician before using it again.

## SAVE THESE INSTRUCTIONS

## PRODUCT OVERVIEW



# INSTRUCTIONS

## FIRST USE

### Checking the product and the package contents

#### NOTICE!

#### Risk of damage!

If you are not cautious when opening the packaging with a sharp knife or other pointed object, you may quickly damage the product.

- For this reason, be very careful when opening it.

1. Take the product out of the packaging.
2. Check to make sure that all parts are included (check Product Overview).
3. Check whether the product or individual parts are damaged. If this is the case, do not use the product. Contact after sales support.

#### Basic cleaning

1. Remove the packaging material and plastic wrappings.
2. Clean all parts of the product before first use as described in the chapter "Cleaning and Maintenance".

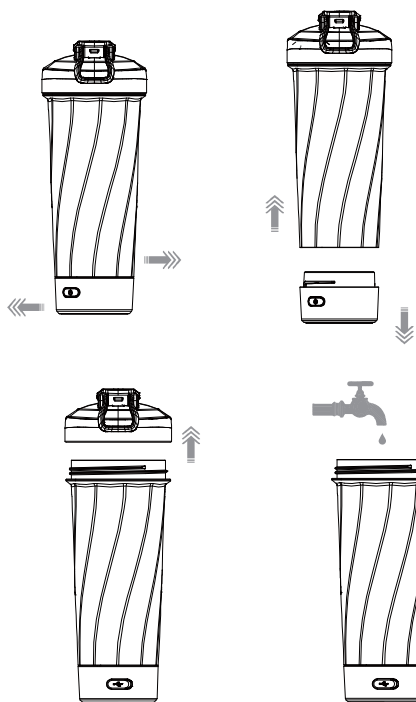
#### Charging the product



- Fully charge the product before first use
- The indicator light illuminates red during the charging process.
- The product cannot be used during charging.

1. Fully unwind and extend the USB charging cable.
2. Open the cover of the charging port.
3. Insert the smaller end of the USB charging cable into the charging port of the product.
4. Insert the larger end of the USB charging cable into a compatible charger (NOT INCLUDED).
5. The indicator light illuminates white when charging is complete. Remove the USB charging cable from the charging port and the power source.
6. Properly close the cover of the charging port after charging.

**OPERATING INSTRUCTIONS**



1. Fully charge the product (see “Charging the product”).

2. Screw the bottle body onto the motor base by turning the bottle body clockwise until it is securely attached. The bottle body is only securely attached to the motor base when it “clicks” into place.

3. Fill the bottle with the desired liquid, the recommended volume is between 250-400mls.

4. Pour the desired powder into the liquid. It is recommended not to exceed 90gms of powder.

**CAUTION:** Adding solid foods, excessive amounts or powder with a high viscosity may prevent stirring and potentially cause damage to the product.

5. Screw the lid onto the bottle by turning the lid clockwise until it is securely attached

6. Ensure that the lid cover is closed firmly.

7. Press the power button to turn on the product. The indicator light illuminates white during operation.

8. Press the power button again to turn off the product.

MODE	ACTION	OPERATION
1	Press once	Blend for 30 seconds
2	Press twice consecutively	Blend for 100 seconds
3	Press once during stirring	Stop blending

**WARNING!** The maximum operating time is 100 seconds .

**Allow the product to rest for 30 seconds before another operation.**



9. Unscrew or open the lid and pour the drink into a glass or cup for consumption.

**NOTE:**After blending the beverage, you can drink it directly from the bottle, through the lid spout. If you need to disassemble the power compartment to consume the beverage, ensure to remove the magnetic stirring blade at the same time to avoid the risk of accidentally swallowing the stirring blade.

10. Unscrew the blending cup from the motor base.

11. Clean all parts thoroughly after use (see "Cleaning and Maintenance")

#### **USAGE WARNINGS!**

- **DO NOT ATTEMPT TO BLEND HOT LIQUIDS.**
- Do not heat the bottle in the microwave or any other liquid.
- Do not attempt to freeze the bottle.
- Do not add dry ice, acids, alkaline or other liquids that may generate high pressure as they may corrode the cup.
- **CAUTION: DO NOT** add ice cubes, nuts, fruit or other large solid particles for blending as this may cause the magnetic stirrer to malfunction or overload and damage the motor.
- Do not store dairy products or baby food in the bottle.
- Keep this product out of reach of children to avoid the risk of accidental ingestion of the magnetic blending blades.
- **DO NOT** operate the magnetic stirrer in an empty bottle without liquid – this can quickly destroy the base and the stirrer.
- **DO NOT** place any parts of the product in the dishwasher – as this may destroy the product.

## **TROUBLESHOOTING**

<b>PROBLEM</b>	<b>POSSIBLE REASON</b>	<b>SOLUTION</b>
The product does not start.	The battery power level is low.	Fully charge the product before use (see "Charging the product").
The product suddenly stops during operation.	The product has overheated.	Stop using the product and let it cool down completely before using it again.
Product is not blending.	Powder has been added before liquid causing the powder to settle and blocking the magnetic stirrer	Add liquid first, then powder.

## CLEANING AND MAINTENANCE



### Risk of injury!

Improper handling of the product may increase the risk of injury.

### NOTICE!

### Risk of injury!

Water that has penetrated the housing may cause a short circuit.

- Make sure that no water penetrates the housing.
- Never immerse the motor base in water.

### NOTICE!

### Risk of injury!

Improper handling of the product may result in damage.

- Do not use any aggressive cleaners, brushes with metal or nylon bristles, or sharp or metallic cleaning utensils such as knives, hard scrapers and the like. They could damage the surfaces.
- Do not put the product in the dishwasher, as this will destroy it.

### Cleaning the blending bottle, and lid.

- Clean the bottle, stirrer and lid in warm soapy water. Rinse and dry all parts thoroughly after cleaning.

### Cleaning the motor base

- Clean the motor base with a damp cloth and dry all parts after cleaning with a dry cloth.

## STORAGE

All parts must be completely clean and dry before being stored

- Always store the product in a dry area.
- Protect the product from direct sunlight.
- Store the product so that it is not accessible to children.

## TECHNICAL DATA

MODEL:	APS06B/G
SUPPLY VOLTAGE:	DC 5 V, 1 A
RATED POWER:	6W
BATTERY CAPACITY:	DC 3.7V 1000 mAh, li-ion
USABLE CAPACITY:	600ml

# 12 MONTH WARRANTY

Thank you for your purchase.

Your new product is warrantied to be free from defects in materials and workmanship for the period stated above, from the date of purchase, provided that the product is used in accordance with accompanying recommendations or instructions where provided. This warranty is in addition to your rights under the Australian Consumer Law.

For New Zealand customers, this warranty is in addition to statutory rights observed under New Zealand legislation.

We will provide you with your choice of a refund, repair (where possible) or exchange (availability dependent) for this product if it becomes defective within the warranty period. The business will bear the reasonable expense of claiming the warranty.

The warranty will no longer apply where the defect is a result of alteration, accident, misuse, abuse, or neglect.

Please retain your receipt as proof of purchase and contact our Customer Service Centre as listed below, for the entity you purchased this product from, for any difficulties with your product. Warranty claims and claims for expenses incurred in returning this product can be addressed with the respective Customer Service Centre.

Our goods come with guarantees that cannot be excluded under the Australian Consumer Law. You are entitled to a replacement or refund for a major failure and compensation for any other reasonably foreseeable loss or damage. You are also entitled to have the goods repaired or replaced if the goods fail to be of acceptable quality and the failure does not amount to a major failure.

<b>Contact for Kmart purchases</b>	<b>Contact for Target purchases</b>
Kmart Australia Ltd. C/-Customer Service Centre 690 Springvale Road, Mulgrave VIC 3170 Customer Service: 1800 124 125 (Australia) or 0800 945 995 (New Zealand) or via Customer Help at <a href="http://kmart.com.au">kmart.com.au</a>	Target Australia Pty Ltd C/- Customer Service Centre 2 Kendall Street, Williams Landing, VIC, 3027 Customer Service: 1300 753 567 or via Customer Help at <a href="http://target.com.au/help/contact-us">target.com.au/help/contact-us</a>