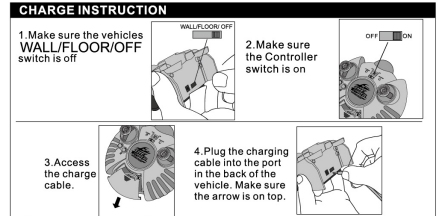
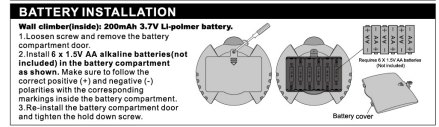
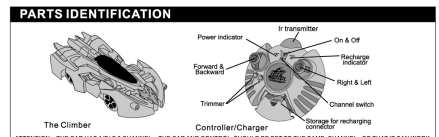


TROUBLESHOOTING	
PROBLEM	SOLUTION
Vehicle does not start.	1. Power switch is off. Turn on. 2. Controller battery is installed with incorrect polarity. Check the (+ and -) markings to make sure the battery is properly aligned. 3. Batteries are drained. Charge batteries and/or install new batteries.
Vehicle does not climb.	1. Over current protection is engaged. Turn vehicle off for 30 seconds then restart.
Vehicle does not drive straight.	1. Make sure surface is clean of dust/dirt. 2. Make sure surface is neither too rough or too smooth. 3. Make sure surface is flat.
Vehicle slips climbing the walls.	1. Clean the tyes with a damp rag. 2. Fold up the fabric skirts for a better seal prior to use.
Vehicle falls off the wall.	1. Make sure your wall and floor are also clean. 3. Check the fabric skirts for damage. If they have been pulled loose, tape them back on with flexible tape. 4. Make sure surface is flat.
Vehicle does not climb wall.	1. Suction jammed.

ADULT SUPERVISION RECOMMENDED!
NOTE: USE ON SMOOTH, CLEAN SURFACES ONLY!

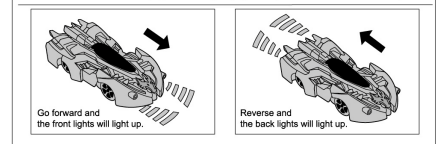
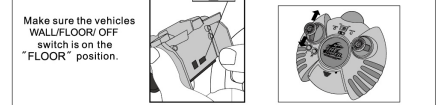
WALL CLIMBER

8+ YEARS

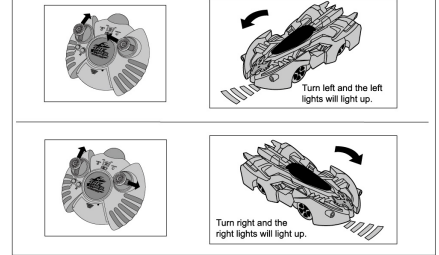


Charging should take between 30 and 50 minutes depending on how much charge is left in the battery. Supporting 5-7 minutes of playing per charge.
NOTE: Do not charge the battery immediately after use. Let the battery cool for at least 10 minutes. If charging is not complete after a long period of time, replace the batteries.
 The charging indicator will turn green when charging, and it will turn off when it is fully charged.

DRIVING ON THE GROUND



Push the left joystick forward and the right joystick left or right to control the vehicles direction.



DRIVING ON WALLS

