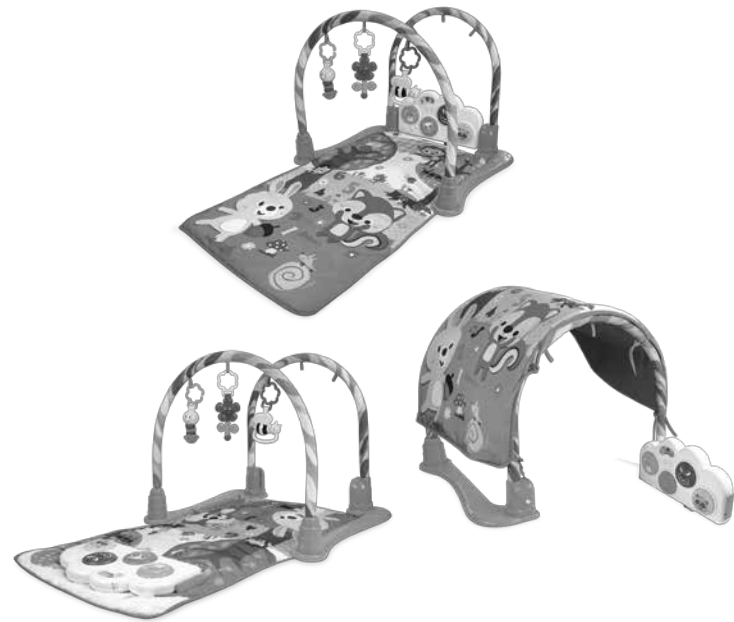


Grow With Me Play Gym

3+ months



Warning!

- To prevent entanglement injury, never place playmat in a crib or playpen. Use only on a flat, horizontal floor. Never add strings, ties, straps or other products to playmat.
- To ensure your child's safety, this product must be assembled by an adult.

Important!

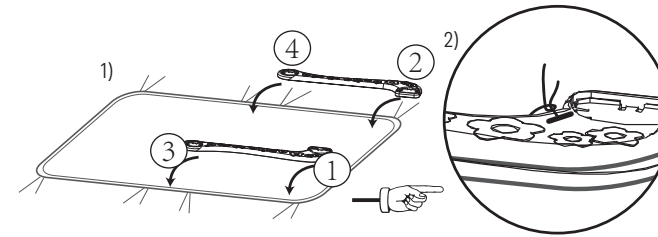
- To ensure your child's safety, please follow the instructions below carefully and make sure the final assembly is correct. Check frequently.
- Product should be used with adult supervision.
- Inspect the playmat before each use.
- Never leave a baby unattended on playmat.
- Babies should not be allowed to sleep unsupervised while laying on this playmat.
- Do not lift or attempt to move playmat with baby on it.
- Do not use this playmat as a blanket.
- Use this product only on the floor.
- Never use on any elevated surface.
- Keep away from fire and strong heat sources.

This sheet contains important information. Please keep all information for future reference.

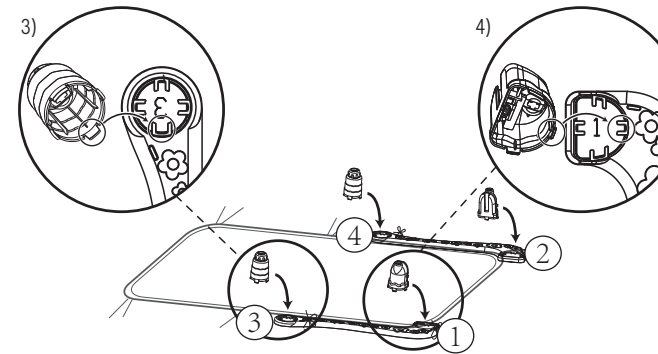
2

For Lay and Play

- 1) Place the playmat flat on the floor with the straps facing out. Put the two baseboards on the bottom left and right corners of the playmat.
- 2) Thread one of the straps through the matching hole on the baseboard. Tie the straps tightly; it is better to tie the ties in a knot rather than a bow. Repeat for the 3 remaining holes.

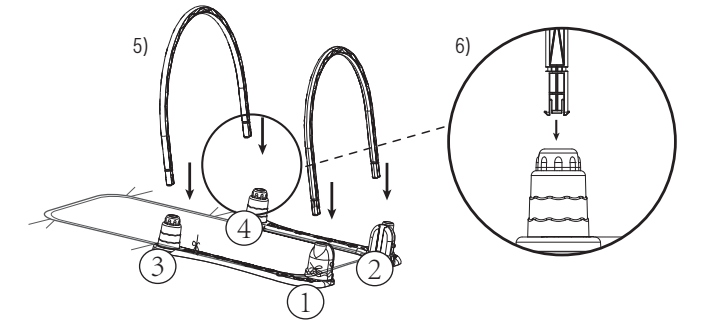


- 3) Insert the middle arch support into the base of the baseboard. Ensure that it is positioned correctly. Then repeat for the other side.
- 4) Insert the top arch support into the top of the baseboard. The lock should be facing outward. Then repeat for the other side. Ensure the four supports and straps are firmly secured.

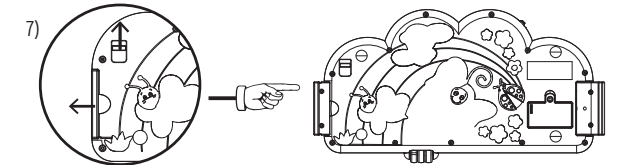


3

- 5) When placing the arches on the arch supports, note that the larger arch will be attached to the middle arch supports; the smaller arch will be attached to the top arch supports.
- 6) Insert the arches into the arch supports correctly by sliding the two gaps on each arch through the raised areas inside the arch supports. Please ensure the supports and straps are firmly secured.

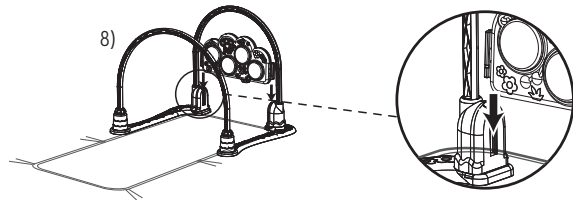


- 7) Before attaching the activity board, extend the joiners. Firstly, unfold to extend the right joiner. Secondly, unlock the left joiner by sliding and holding the locks up in the top position.

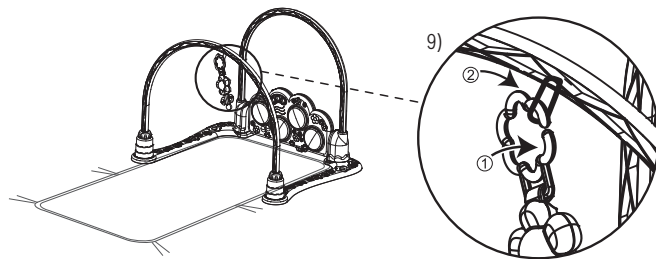


4

- 8) Match the edges of the joiners with the corresponding top arch supports; one is straight and one is curved. Slide the activity board into place.



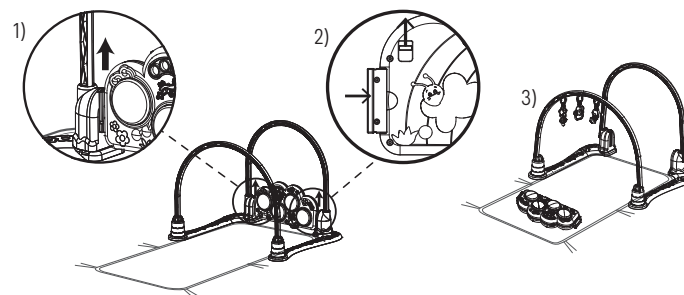
- 9) Attach the hanging toys to the rings, and then insert them into the loops on the middle arch.
- 10) Make sure everything is assembled securely and properly before laying baby on the playmat.



5

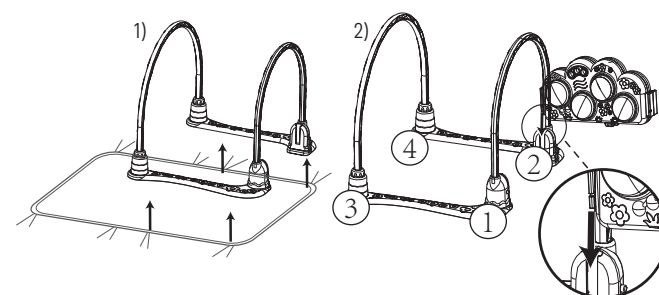
For Tummy Time

- 1) Press the lock on top arch support at each side to slide out the activity board.
- 2) Push the left joiner into the slot by sliding and holding the lock up in the top position. The right joiner is to remain unfolded.
- 3) Place the activity board on the playmat.



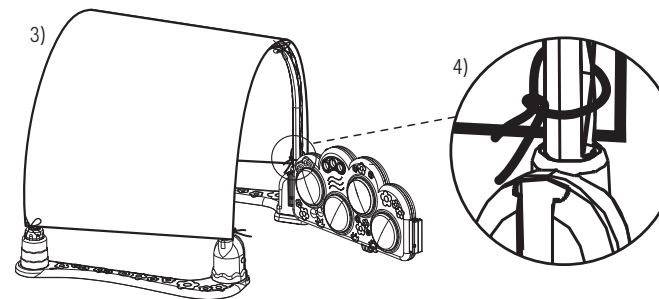
For Tunnel Time

- 1) Detach the mat by untying the straps.
- 2) Insert the activity board into the curved side of the top arch support, leaving the joiner in the other side of the activity board hidden.



6

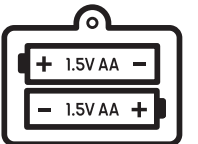
- 3) Lay the playmat horizontally across the top of the arches.
- 4) Tie each strap tightly on the arches; there are sets of straps on each side. Ensure it is securely attached.
- 5) Please ensure all assembly is secured firmly before use.



7

Battery installation and replacement:

- Switch off the power of the unit.
- Loosen the screw to open the battery compartment door.
- Insert/Replace the new batteries in the proper direction indicated on the product.
- Close the compartment and screw shut securely.



Battery notice

- Batteries are to be inserted with the correct polarity.
- Do not mix different types of batteries or new and used batteries.
- Non-rechargeable batteries are not to be recharged.
- Rechargeable batteries are only to be charged under adult supervision.
- Rechargeable batteries are to be removed from the toy before being charged.
- The supply terminals are not to be short-circuited.
- Remove batteries from the toy when not in use for extended time or when batteries become exhausted.
- Dispose of batteries responsibly.
- Do not dispose of in fire.
- Batteries must be installed and replaced by an adult.

Care and maintenance

- Keep the unit out of direct sunlight and away from any direct heat source.
- If the toy suddenly stops working, the voice becomes faint or the sound seems weak, the problem may be low battery power. If this is the case, install a new set of batteries before use.
- Surface wash with a clean, damp sponge or cloth. Air dry only. Do not immerse in water.

Images/Drawings in the manual are for visual purposes only. Actual product may vary slightly. The manufacturer reserves the right to change any specification or feature without prior notice.

8