

anko

**Blender
DZ-2020B
User Manual**



PLEASE READ AND SAVE THESE
INSTRUCTIONS FOR FUTURE REFERENCE

IMPORTANT SAFEGUARDS

When using any electrical appliance, always follow these basic safety precautions:



READ ALL INSTRUCTIONS BEFORE USE.



WARNING-- To reduce the risk of fire, electric shock, or serious personal injury:

- Always ensure the product is unplugged from the electrical outlet before relocating, assembling, disassembling, or cleaning it. Always unplug the product from the electrical outlet when it is not in use.
- This appliance is not intended for use by persons (including children) with reduced physical, sensory or mental capabilities, or lack of experience and knowledge, unless they have been given supervision or instruction concerning use of the appliances by a person responsible for their safety.
- Children should be supervised to ensure that they do not play with the appliance.
- Keep the product out of the reach of children and pets. This product is not intended for use by children. Close supervision is necessary when using this appliance near children.
- **Do not leave the product unattended while it is in use**, especially when children are present.
- Do not let cord hang over edge of table or counter or touch hot surface including stove.
- Do not immerse power cord, plug, or product in water or other liquids. If the product falls into water, immediately unplug it from the electrical outlet. **Do not touch or reach into the water.**
- Never operate this product if it has a damaged Power Cord or plug, is not working properly, has been dropped or damaged, or if the Base has been exposed to water or other liquids. Do not attempt to examine or repair this product yourself. Any repairs to the product should be carried out by a qualified electrical person only or the product must be disposed.
- Keep the Power Cord and product away from heated surfaces.
- The use of attachments not recommended or sold by the product manufacturer may cause a risk of injury to persons.
- Handle the blades with care as they are extremely sharp. Use caution when attaching or detaching the blades, emptying the bowl and during cleaning.
- Always ensure the blender is switched OFF and the blade has come to a complete stop before removing the sports bottle from the base.

IMPORTANT!

Do not blend hot liquids.

Be careful if hot liquid is poured into the blender, it can be ejected out of the appliance due to sudden steaming.

To prevent damage to the electric motor, the maximum operating time is 30 seconds. Allow it to rest for 1 minute before using it again. After 5 cycles of operation, allow the blender to cool down to room temperature for approximate 30 minutes before using it again.

12 Month Warranty

Thank you for your purchase from Kmart.

Kmart Australia Ltd warrants your new product to be free from defects in materials and workmanship for the period stated above, from the date of purchase, provided that the product is used in accordance with accompanying recommendations or instructions where provided. This warranty is in addition to your rights under the Australian Consumer Law.

Kmart will provide you with your choice of a refund, repair or exchange (where possible) for this product if it becomes defective within the warranty period. Kmart will bear the reasonable expense of claiming the warranty. This warranty will no longer apply where the defect is a result of alteration, accident, misuse, abuse or neglect.

Please retain your receipt as proof of purchase and contact our Customer Service Centre on 1800 124 125 (Australia) or 0800 945 995 (New Zealand) or alternatively, via Customer Help at Kmart.com.au for any difficulties with your product. Warranty claims and claims for expense incurred in returning this product can be addressed to our Customer Service Centre at 690 Springvale Rd, Mulgrave Vic 3170.

Our goods come with guarantees that cannot be excluded under the Australian Consumer Law. You are entitled to a replacement or refund for a major failure and compensation for any other reasonably foreseeable loss or damage. You are also entitled to have the goods repaired or replaced if the goods fail to be of acceptable quality and the failure does not amount to a major failure.

For New Zealand customers, this warranty is in addition to statutory rights observed under New Zealand legislation.

Caution!

The blender is intended for blending fluids, e.g. dairy products, sauces, fruit juices, soups, mixed drinks, shakes. Do not blend hot liquid.

!!! Avoid touching the sharp blades. If the blades get stuck, unplug the appliance and remove the ingredients that are blocking the blades with a spatula.

How to Care for Your Blender

CAUTION: Always unplug the Blender when cleaning or assembling. Always clean the product immediately after each use.

Washing Blender Attachments.

Do not use abrasives, scourers, alcohol etc., to clean the appliance.

The most important thing is to UNPLUG the Power Base before cleaning. Never immerse the blender base in water or clean it in the dishwasher. Use a damp cloth to wipe the inside and outside of the Power Base.

If you need to remove the rubber seal ring for cleaning, make sure not to use any sharp or pointed objects to remove the rubber sealing ring. Always use a flat, blunt object or tool to avoid damage to the sealing ring.

Make sure to re-install the rubber sealing ring properly in the blade base before use.

Storage

1. Unplug and clean the unit.
2. Store in original box or in a clean, dry place.
3. Never store the blender while it is hot or while connected to mains power.
4. Never wrap the cord tightly around the appliance. Never place any stress on the power cord, especially where the cord enters the unit, as this could cause the cord to fray and break.

Electrical Specifications

Voltage: 220-240V~ 50/60Hz

Power: 300W

- Do not plug/unplug the product into/from the electrical outlet with a wet hand.
- To disconnect the product from an electrical outlet, pull from the plug do not pull on the power cord.
- Never place the blade assembly on the base unless attached to the bottle.
- Do not put any stress on the power cord where it connects to the product, as the power cord could fray and break.

IMPORTANT! Never operate the blender when the blender bottle is empty.

- Switch OFF the appliance and disconnect from mains power supply before changing accessories, approaching parts that move in use, and when it is not in use.
- If the supply cord is damaged, it must be replaced by qualified electrical person in order to avoid a hazard or the product must be disposed of.

WARNING: Misuse may cause injury.

- This appliance is for household use only.

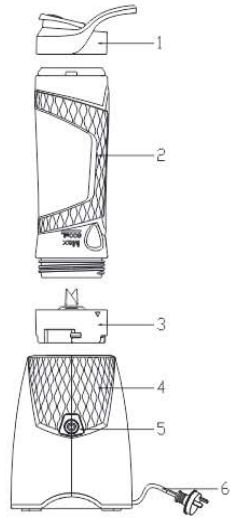


CAUTION-- To reduce the risk of personal injury or product/property damage:

- This product is intended for indoor, non-commercial, non-industrial use in processing foods for human consumption. Do not use the product outdoors or for any other purpose.
- Always operate the product on a flat, stable surface.
- Do not attempt to open any part of the blender base.
- Do not use any lubricant on the blender.
- Do not let cord hang over edge of table or counter where it may be tripped over or pulled.

**SAVE THESE INSTRUCTIONS
FOR HOUSEHOLD USE ONLY**

Features of drink bottle blender



- 1: Spill-proof drinking lid
- 2: Sport bottle (600ml)
- 3: Blade assembly
- 4: Blender base
- 5: Button switch
- 6: Plug with cord

Before First Use

Before using your blender for the first time it is important that you read and follow the instructions in this use and care booklet, even if you feel you are familiar with this type of appliance.

Your attention is drawn in particular to the section dealing with IMPORTANT SAFEGUARDS. Find a safe and convenient place to keep this booklet handy for future reference. This appliance has been designed to operate from a standard domestic power outlet. It is not intended for industrial or commercial use. Carefully unpack the Blender. Remove all packaging materials and either discard or retain for future use.

Before using the product for the first time, disassemble and wash all parts (bottle, blade assembly, rubber gaskets, lid) except the power base in warm soapy water. Dry thoroughly and replace. Wipe over the exterior of the blender base housing with a damp sponge or cloth. Do not use abrasive cleaners.

Ensure that the voltage of your electricity supply is the same as that indicated on the rating label on the appliance (220-240V~).

IMPORTANT! Do not wash the sports bottle in boiling water, washing it in hot water will damage the plastic bottle.

IMPORTANT! Ensure the product is unplugged from the electrical outlet before assembling it.

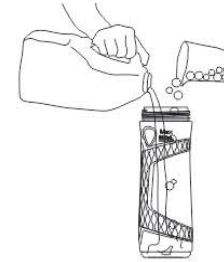
IMPORTANT! To prevent damage to the electric motor, the maximum operating time is 30 seconds. Allow it to rest for 1 minute before using it again. After 5 cycles of operation, allow the blender to cool down to room temperature for approximate 30 minutes before using it again.

IMPORTANT! Do not blend hot liquids. Allow hot liquids to cool down before using it in the blender.

How to Use Your Blender

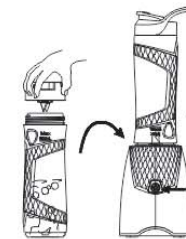
1. Place the blender sport bottle on a flat surface with the open end facing up. Fill the sport bottle with your favorite ingredients under the 600ml marking.

Never fill the bottle beyond the MAX indicator.



2. Fasten the blade assembly on the open end of the sport bottle. Turn the sport bottle upside down, line up with the arrows on the base and turn it clockwise to lock the sport bottle on to the blender base. Connect the supply cord plug into a mains power outlet, press and hold the button switch to start the blender. Blending will stop when you release the button switch.

NOTE: The power button switch must be pressed and held for the blender to function, this is not a malfunction.



3. Turn the sport bottle over and place on a flat surface. Replace the blade assembly with the drinking lid.

