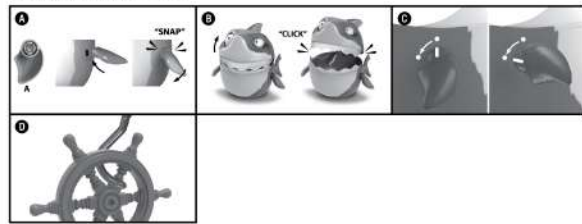


Back

Front

**Set-up and Assembly:**



**IMPORTANT INFORMATION!**

- Once fin is installed, it is recommended you do not remove it after you have finished playing the game, and leave it installed permanently.
- Do not open the shark's head beyond the click point as this will cause damage to the unit.
- Please ensure the fin is fully twisted to the end point as indicated (Diagram C), without overturning, otherwise the shark's mouth will not close at the end of the game.
- Be careful not to overturn the fins, as this may cause damage to the unit.
- Should either of the fins become dislodged, simply re-attach them by pressing them back into their openings on the base.
- During play, the shark may move from its original position. If playing on a table or any other elevated surface, it is important to set the shark away from the edges to prevent it from falling off which can cause damage to the unit. During play, if the shark travels close to the edges of the table, then stop play and move it back to a safer area before resuming play.
- Save the plastic bags to store your pieces after you have finished playing.

**How to play:**

**Basic game**

- Each player chooses a coloured fishing gaff.
- One player holds the body with one hand and turns the right fin counter-clockwise until the mark on the fin and the mark on the body line up with each other. See Diagram C.
- Once the fin is in position and released, the timing begins. Count to three to allow the player who set the timer to get in position to play.
- Try to remove as many pieces as you can from the shark's mouth before the time runs out and the jaws snap shut!
- Players are not allowed to "lick" or "push" pieces out of the shark's mouth. If this occurs, the player must place the piece back into the shark's mouth. Pieces must be "hooked" onto the fishing gaff when being removed, as shown in Diagram D.
- The player with the most pieces removed at the end of the game is the winner!

**Challenging game**

- The same rules apply, however in this case each player must only remove the prizes matching their colour of fishing gaffs.
- At the start of the game, only insert the prizes corresponding to the colours of the fishing gaffs being used by the players. For example, if there are only 2 players then only the prizes in those 2 colours should be inserted into the shark's mouth.

**WARNING: CHOKING HAZARD**  
SMALL PARTS. NOT FOR CHILDREN UNDER 3 YEARS.

PRODUCT MAY VARY SLIGHTLY FROM IMAGE SHOWN.  
PLEASE KEEP THE PACKAGING FOR FUTURE REFERENCE.  
MADE IN CHINA.

© KMART AUSTRALIA LIMITED  
KMART AUSTRALIA - 688 SPRINGVALE RD, MULGRAVE, VICTORIA 3170 AUSTRALIA  
KMART NEW ZEALAND - REGIONAL OFFICE C/O KMART PAPATOETOE STORE  
HUNTERS PLAZA, GREAT SOUTH RD, PAPATOETOE, AUCKLAND, NEW ZEALAND  
GPF018

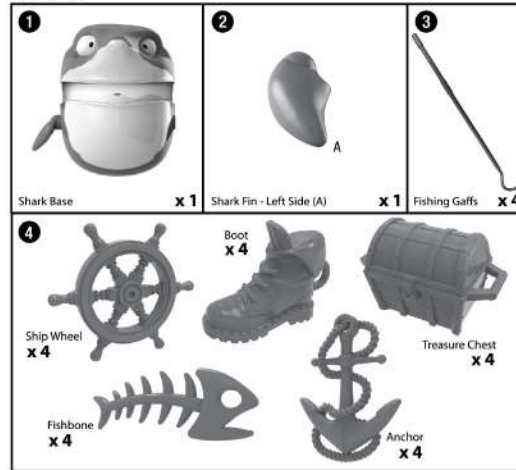
3+ YEARS  
4.5 2.4



**INSTRUCTIONS**

42752943 / GPF018

**Contents:**



**Assembly and Set-up:**

- Check contents to ensure you have all of the pieces.
- An adult should push the left fin in firmly, following the corresponding shape on the shark. See Diagram A.
- Open the shark's mouth by carefully pulling the top half of the head from the front teeth upwards, until you hear a "click" sound and the top half locks in place. See Diagram B.
- Place all of the playing pieces inside the shark's mouth.

|                              |   |
|------------------------------|---|
|                              | Merchant Ambassador (Holdings) Ltd.,<br>Room 2502, 25/F, Perfect Industrial Bldg.,<br>31 Tai Yau Street, San Po Kong, Kowloon,<br>Hong Kong |
| File Name :                  | GPF018_ShakyShark_IM_Kmart_19144_OUT.ai   |
| Reference # (New Design) :   | 19144   |
| Revised (Previous Ref. #) :  |   |
| Transfer Date :              | 2017-06-29  |
| Transferred To :             | Daphne  |
| Transfer Method :            | QQ  |
| Item # :                     | GPF018  |
| UPC # :                      | -   |
| Dimensions :                 | W: 5.51" x H: 8.26" / W: 14 x H: 21 cm  |
| Primary Display Panel Size : | 45.51" / 29.4 cm  |
| Color :                      | K   |
| File Type :                  | IM  |
| Series :                     | KidZone   |
| Client(s) :                  | KMART GP140901  |
| Order # :                    | GP140901-190103/04/06/07  |
| Quantity :                   | ALL EXISTING KMART ORDERS   |
| HK Merchandiser :            | Halle   |
| HK Designer :                | Jessica/Anthony   |
| Nominated Factory :          | YDT   |
| MA Ningbo Ops. :             | Ada   |
| Approval File :              | -   |
| Approval Sample Ref. # :     | -   |

210X290MM