

INSTRUCTION MANUAL

MINI STUNT CAR 360



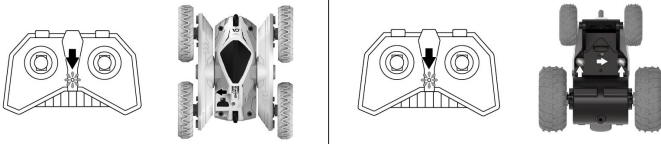
NO.S8985A

NO.S8989B

SAVE THESE INSTRUCTIONS.
READ COMPLETE INSTRUCTIONS BEFORE USE.

How to bind

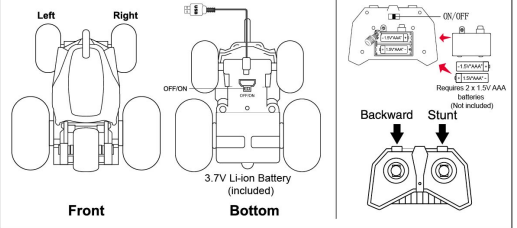
1. Turn on the vehicle first, then turn on the transmitter.
2. When the light of the transmitter is flashing, that means vehicle is matching.
3. If the light of the transmitter is on and not flashing, it means the vehicles are matched.
4. If it doesn't complete the binding process within 8 seconds, please turn off both the vehicle and transmitter and re-start the binding process.
5. When the binding process is complete, whenever you switch the vehicle and transmitter on and off, it searches for the memorised code and will only lock onto the transmitter signal containing that code.
6. If you have more than two vehicles, please bind them one by one. When the second vehicle is binding, always keep the first vehicle and transmitter on.
7. Please turn off both the vehicle and transmitter and re-start the binding process if you are changing to another 2.4GHZ transmitter.



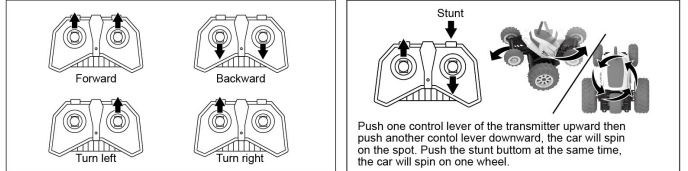
NO.S8985A

Contents

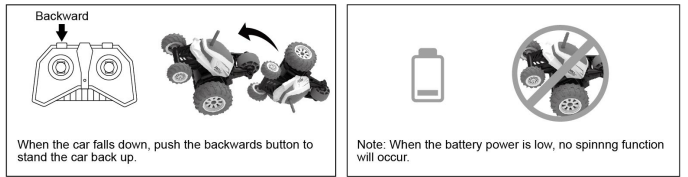
- RC Vehicle x 1
- RC Transmitter x 1
- Instruction Manual x 1
- USB cable x 1



How to play

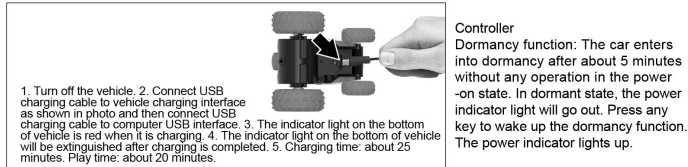


Push one control lever of the transmitter upward then push another control lever downward, the car will spin on the spot. Push the stunt bottom at the same time, the car will spin on one wheel.



When the car falls down, push the backwards button to stand the car back up.

Note: When the battery power is low, no spinning function will occur.



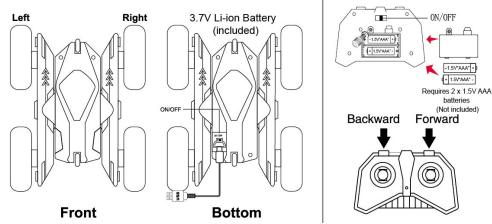
1. Turn off the vehicle. 2. Connect USB charging cable to vehicle charging interface as shown in photo and then connect USB charging cable to computer USB interface. 3. The indicator light on the bottom of vehicle is red when it is charging. 4. The indicator light on the bottom of vehicle will be extinguished after charging is completed. 5. Charging time: about 25 minutes. Play time: about 20 minutes.

Controller Dormancy function: The car enters into dormancy after about 5 minutes without any operation in the power-on state. In dormant state, the power indicator light will go out. Press any key to wake up the dormancy function. The power indicator lights up.

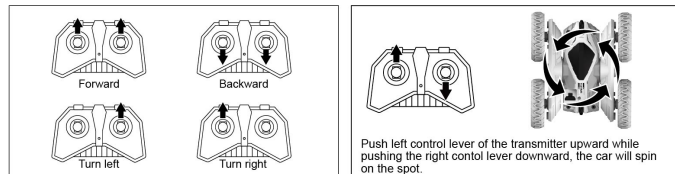
NO.S8989B

Contents

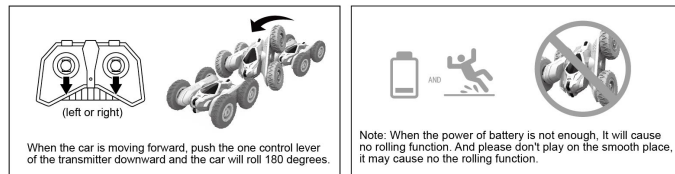
- RC Vehicle x 1
- RC Transmitter x 1
- Instruction Manual x 1
- USB cable x 1



How to play

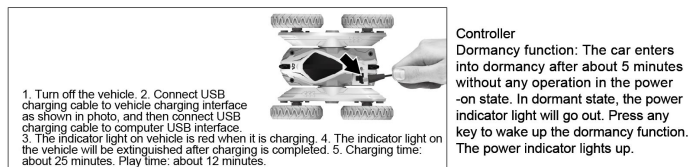


Push left control lever of the transmitter upward while pushing the right control lever downward, the car will spin on the spot.



When the car is moving forward, push the one control lever of the transmitter downward and the car will roll 180 degrees.

Note: When the power of battery is not enough, it will cause no rolling function. And please don't play on the smooth place, it may cause no the rolling function.



1. Turn off the vehicle. 2. Connect USB charging cable to vehicle charging interface as shown in photo, and then connect USB charging cable to computer USB interface. 3. The indicator light on vehicle is red when it is charging. 4. The indicator light on the vehicle will be extinguished after charging is completed. 5. Charging time: about 25 minutes. Play time: about 12 minutes.

Controller Dormancy function: The car enters into dormancy after about 5 minutes without any operation in the power-on state. In dormant state, the power indicator light will go out. Press any key to wake up the dormancy function. The power indicator lights up.

BATTERY WARNING:

Do not mix old and new batteries.
Do not mix alkaline, standard (carbon-zinc), or rechargeable (nickel—cadmium) batteries. Insert batteries using the correct polarity. Do not short-circuit the supply terminal. Remove batteries when not in use. Recycle or dispose of exhausted batteries according to federal, state, and local laws. Do not dispose of batteries in fire—they may leak or explode. Only use manufacturer specified battery(ies), charger(s) and/or adapter, if applicable, specified by the manufacturer. Always use, replace, and recharge (if applicable) batteries under adult supervision. Non-rechargeable batteries are not to be recharged; Rechargeable batteries are only to be charged by adult. Exhausted batteries are to be removed from the toy. Chargers used with the toy are to be regularly examined for damage to the cord, plug, enclosure and other parts, and that, in the event of such damage, the toy must not be used with the charger until the damage has been repaired. The supply terminals are not to be short-circuited. Packaging has to be kept since it contains important information. Product may vary slightly from image shown.

SAFETY PRECAUTIONS

Do not operate during thunderstorms or rain.
Avoid water, sand and snow when operating the car.
Do not submerge car or controller in water.
Never operate your car on the street or highway.
Never operate your car in a confined or crowded area and do not use people or animals as obstacles. Do not run your car into furniture, objects or hard surfaces, as this will cause damage to both the objects and the car. Keep fingers, hair and loose clothing away from the tires, gears and motor while the car is switched to "ON". Do not leave the car or transmitter near sources of heat or under direct sunlight for long periods of time. Do not leave the car or transmitter outside overnight. Dampness is harmful to interior components. Remove all batteries when not in use to avoid accidental operation. Adult supervision is recommended when operating this car.

Performance tips

1. Do not drive on grass, dirt, sand, dust, carpet or through water.
2. Do not drive in windy or rainy weather.
3. Avoid the vehicle directly impacting with obstacles.
4. Switch OFF the power when not in use to prevent damage to the vehicle or transmitter due to leakage of electrolytes from batteries.
5. Remove all batteries from the vehicle and transmitter when not in use for a long period of time.
6. Keep fingers, hair and loose clothing away from the wheels.
7. The operating range can be affected by a variety of factors:
 - a) Low Voltage of batteries in the transmitter or vehicle.
 - b) Interference from other items that emit radio frequency signals.
8. Outdoor usage is recommended in order to get optimum control range.
9. It is recommended to play with the vehicle on a clean and smooth surface.
10. Clean the battery compartment to make sure it is free from dust to prevent poor contact of batteries.

Cautions

1. The charger for use with the toy should be regularly examined for potential hazards, such as damage to the cable or cord, plug, enclosure of other parts and that in the event of such damage, the toy must not be used until that damage had been properly removed.
2. Do not attempt to disassemble the vehicle or transmitter
3. Make sure the batteries are installed with correct polarities (+/-) as shown inside the battery compartment.
4. Remove the package and take out all accessories before giving the vehicle and transmitter to a child to play with. The packaging and instruction manual contains important information. Please keep them for future reference. Warning! Choking Hazard. Not suitable for children under the age of 3 years due to small parts. We reserve the right to improve/amend specifications and colours without notice. Warning! The Antenna of the vehicle is not to be inserted into socket outlets.