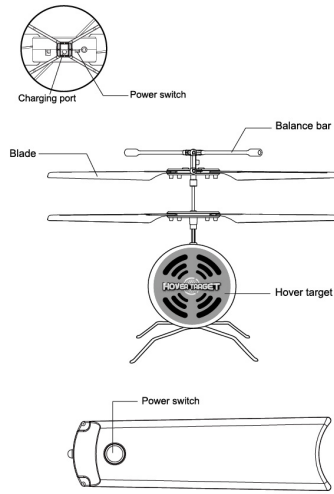




PART NAMES



BATTERY INSTALLATION/REMOTE CONTROL

- Unscrew to open battery cover, insert 4 x 1.5V AA batteries, see Diagram 1.
 - Replace battery cover.
- Attention:** Remove batteries after you have finished using your product.

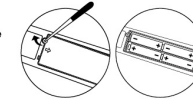


Diagram 1

LITHIUM BATTERY INFORMATION

Attention: Do not charge battery immediately after each play, let the battery cool down for a while by an adult.

- Turn off the hover target.
- Pull the charging cable from the back of the controller and plug it into the hover target. (See Diagram 2)
- The indicator light of the hover target will lights up when it has started charging.
- Once the indicator light extinguishes, the hover target is fully charged. Unplug the charging cable from the hover target.
- Charging time: approximately 30-35 minutes.
- Play time: approximately 5-6 minutes.

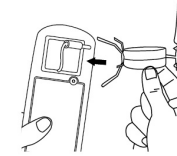
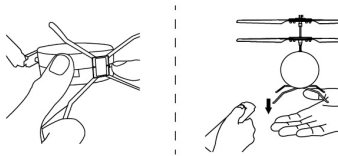


Diagram 2

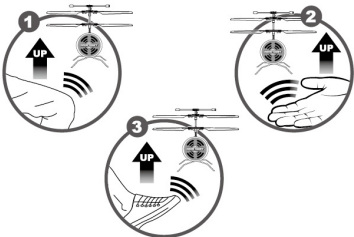
HOW TO PLAY

To start the hover target, turn it on, point the remote at the hover target and press the button. The LED will glow solidly and the hover target will lift off.

To land the hover target and power it off, press the controller button again.

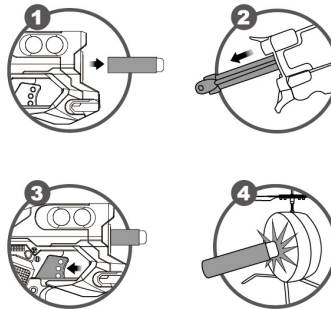


The integrated sensor detects the hover target's height above the floor and keeps it hovering.



Insert a soft dart fully into the blaster, then pull the handle to the fullest until it clicks into place. Take aim and pull the trigger to shoot the dart at the hover target. If you hit the hover target, it will switch off the rotor and then crash to the floor.

Warning: Do not aim at eyes or face. Do not use projectiles other than those supplied by the manufacturer.



WARNING

- Please follow the instructions for correct installation and use. Some parts require assembly by an adult.
- The product contains small parts and is a choking hazard.
- Do not touch the hot motor and batteries.
- Do not touch working propellers.
- Do not fly towards yourself or other people.
- Adult supervision is required.
- Throw away the packaging material straight away, as this can cause harm to children.
- Non-rechargeable batteries are not rechargeable.
- To charge the rechargeable battery, it will need to be done by an adult.
- Do not mix old and new batteries or batteries of different types.
- Do not short circuit the battery or put the battery in fire.
- Do not leave the toy unattended while charging it.
- When the battery is low, please return the hover target and recharge it.
- Charge the toy on non-flammable surface and keep it away from flammable items.
- Turn the charger off when the toy's battery is charged, and always unplug it from the toy.
- If the toy has been damaged, immediately stop use, unplug, and safely move the toy away from flammable materials.
- Follow the manufacturer's instructions for charging the toy. Do not charge longer than recommended.
- Do not use the product for a long time. Remove the battery.
- To avoid injury, do not touch the rotating parts.
- Do not impact or drop the hover target or remote control.
- Please use a clean soft cloth to clean the product.
- The user has the responsibility to ensure that the product will not cause harm to themselves or others.
- The manufacturers and dealers do not bear any responsibility for injuries or damage to property caused by improper use.
- The packaging and instructions contain important information of products, please keep for future reference.
- Only fly during the day and keep your hover target within visual line-of-sight. This means being able to see the hover with your own eyes (rather than through a device) at all times.
- Do not fly your hover target higher than 120 metres (400ft) above the ground.
- Keep your hover target at least 30 metres away from other people.
- Do not fly your hover target over or near an area affecting public safety or where emergency operations are underway (without prior approval). This could include situations such as a car crash, police operations, a fire and associated firefighting efforts, and search and rescue.
- Do not fly over or above people. This could include beaches, parks, events, or sport ovals where there is a game in progress.
- Keep at least 5 km away from controlled aerodromes if your hover target weighs more than 100g. Flying within 5.5 km of a non-controlled aerodrome or hover target landing site (HLS) is possible, but only if no manned aircraft are operating to or from the aerodrome. If you become aware of manned aircraft operating to or from the aerodrome/HLS, you must manoeuvre away from the aircraft and land as soon as safely possible.
- Do not operate your hover target in a way that creates a hazard to another aircraft, person or property.