

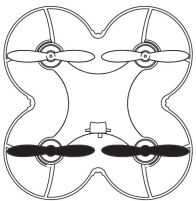
AGES 8+ YEARS

RC MINI DRONE

MANUAL

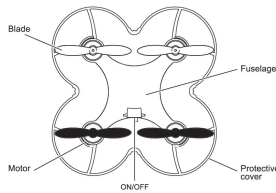
Please read the instructions before operating the product.

2.4GHz

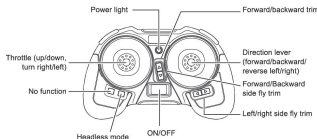


Attention: The drone includes a built-in rechargeable battery that is non-replaceable. The included rechargeable battery is not fully charged prior to shipment and must be charged before the first use.

DRONE



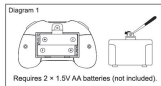
REMOTE CONTROL



BATTERY INSTALLATION/REMOTE CONTROL

1. Unscrew to open battery cover, insert 2 x 1.5V AA batteries. (see Diagram 1)
2. Replace battery cover.

Attention: Remove batteries after you have finished using your product.

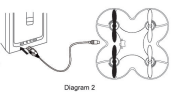


Requires 2 x 1.5V AA batteries (not included).

LITHIUM BATTERY CHARGE INFORMATION

Attention: Do not charge battery immediately after each play, let the battery cool down for a while.

1. Turn off drone.
2. Connect USB charging cable plug with drone charging interface. (see Diagram 2)
3. Put the cable into the computer USB interface. The USB indicator will lights up when it has started charging.
4. Once the indicator light extinguishes, the drone is fully charged. Untangle the USB charging cable from computer USB interface and disconnect with drone.
5. Charging time: approximately 20 minutes.
6. Play time: approximately 5-6 minutes.

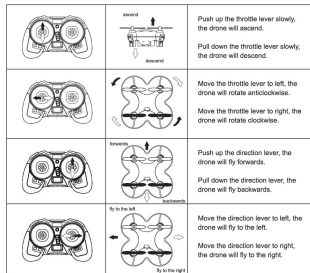


DRONE MATCHING CONTROL METHOD

Attention: Select a large, wide-open area for flying, and make sure that there are no obstructions, animals, people or overhead powerlines nearby. Do not operate the drone in strong wind, rain or snow etc.

1. Set the drone power switch to 'ON' state and place flat on the ground, the LED light on drone will be flashing rapidly. Ensure you are least 2 metres from the back of drone.
2. Set the remote control: push the throttle lever down and set the power to 'ON'.
3. Push the throttle lever up, you will hear one beep sound. And then push it down, you will hear two beep sounds again. If the power indicator on remote control stops flashing, the pairing is successful. If pairing is not successful, please repeat steps 1-3.
4. Now you can operate your drone. See following instructions to play your drone.

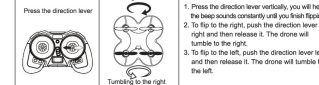
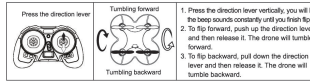
CONTROL METHOD OF THE DRONE



Tip: The LED light will flash continuously when the drone is low in battery. Please recharge the drone when the light is flashing.

FLIPPING THE DRONE

Tip: Ensure the drone flying height is at least 3 metres from the ground when you perform a 360 degree flip function.



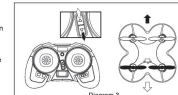
HEADLESS MODE

- In headless mode, any side of drone can be treated as the front of the drone.
- How to turn on headless mode:
1. You can enter headless mode during stable flying or before flying. The LED light is lit.
 2. Press the headless mode button and the LED light will start to flash. This means the drone has entered headless mode. You can stop the drone under headless mode now.
 3. Press headless mode button again, the drone will turn back to the normal flying mode.
- Attention: The LED light of drone will flash slowly in headless mode and flash rapidly when the drone is low in battery.

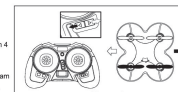
HOW TO TRIM THE DRONE

Slowly raise the throttle stick and let the drone lift off the ground. You can use the trim to correct the action if the drone leans to the wrong direction.

1. If the drone drifts forward, press the backwards trim button as shown in Diagram 3 to trim it backward until it stops drifting.
2. If the drone drifts backward, press the forwards trim button as shown in Diagram 3 to trim it forward until it stops drifting.



1. If the drone drifts to left, press the right trim button as shown in Diagram 4 to trim it to right until it stops drifting.
2. If the drone drifts to right, press the left trim button as shown in Diagram 4 to trim it to left until it stops drifting.



WARNING

- Please follow the instructions for correct installation and use. Some parts require assembly by an adult.
- The product contains small parts and is a choking hazard.
- Do not touch the hot motor and batteries.
- Do not touch working propellers.
- Do not fly towards yourself or other people.
- Adult supervision is required.
- Non-rechargeable batteries are not rechargeable.
- Charging of the rechargeable battery should be done by an adult.
- Do not mix old and new batteries or batteries of different types.
- Do not short circuit the battery or put the battery in fire.
- Do not leave the toy unattended while charging it.
- When the battery is low, please recharge drone.
- Charge the toy on non-flammable surface and keep it away from flammable items.
- Do not use the product for a long time. Remove the battery.
- Turn the charger off when the toy's battery is charged and always unplug it from the toy.
- If the toy has been damaged, immediately stop use, unplug, and safely move the toy away from flammable materials.
- Follow the manufacturer's instructions for charging the toy. Do not charge longer than recommended.
- Do not use the product for a long time. Remove the battery.
- To avoid injury, do not touch the rotating parts.
- Do not impact or drop the drone or remote control.
- Please use a clean soft cloth to clean the product.
- The user has the responsibility to ensure that the product will not cause harm to themselves or others.
- The manufacturer and dealers do not bear any responsibility for injuries or damage to property caused by improper use.
- The packaging and instructions contain important information of products, please keep for future reference.
- Only fly during the day and keep your drone within visual line-of-sight. This means being able to see the drone with your own eyes (rather than through a device) at all times.
- Do not fly your drone higher than 120 metres (400ft) above the ground.
- Keep your drone at least 30 metres away from other people.
- Do not fly your drone over or near an area affecting public safety or where emergency operations are underway (without prior approval). This could include situations such as a car crash, police operations, a fire and associated firefighting efforts and search and rescue.
- Only fly one drone at a time.
- Do not fly over or above people. This could include beaches, parks, events, or sport ovals where there is a game in progress.
- Keep at least 50m away from controlled aerodromes if your drone weighs more than 100g. Flying within 50m of a non-controlled aerodrome or drone landing area (DLA) is possible, but only if no manned aircraft are operating to or from the aerodrome. If you become aware of manned aircraft operating to or from the aerodrome/DLA, you must manoeuvre away from the aircraft and land as soon as safely possible.
- Do not operate your drone in a way that creates a hazard to another aircraft, person or property.