

140mm

Adjustable Training Wheels

ADULT ASSEMBLY REQUIRED

TOOLS REQUIRED: Phillips screwdriver
and adjustable wrench

CONTENTS:

- | | |
|-----------------------|-----------------------------|
| 1. Stabilizer arm (2) | 4. Training wheel (2) |
| 2. Support clip (2) | 5. Wheel bolt (2) |
| 3. Washer (2) | 6. Wheel axle nut (2) |
| | 7. Wheel nyloc axle nut (2) |

ASSEMBLY:

1. Insert bolt through wheel and tighten wheel nut onto the bolt.
2. Insert wheel assembly through the correct hole on the stabilizer arm, place the washer and nyloc axle nut onto the wheel bolt and tighten securely.
3. Remove bicycle wheel axle nut from the rear wheel of the bicycle.
4. Place support clip over bicycle wheel axle so that the open end of the clip fits around the chainstay of the bicycle. Caution - maximum 26 mm diameter chainstay allowed for safe fit.
5. Attach stabilizer arm to the bicycle wheel axle through the appropriate hole for the bicycle wheel size. When both arms are attached and the bicycle is on level ground, the training wheels should have 1/4" - 1/8" clearance from the ground.
6. Replace axle nut and tighten securely.

CAUTION:

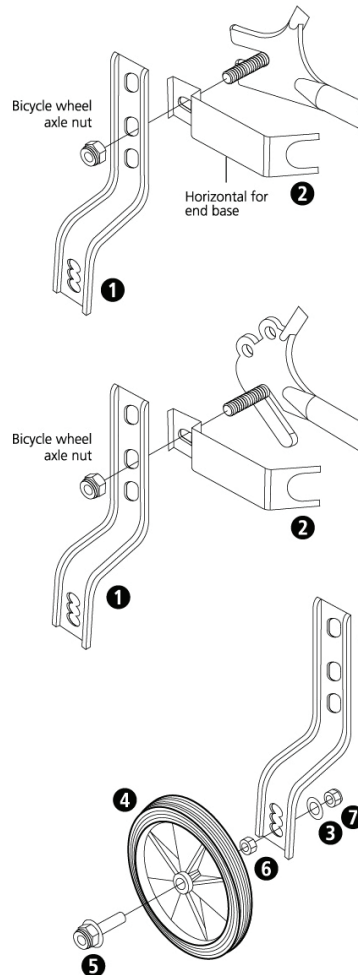
Make certain that axle length is sufficient for attachment of training wheels and additional spacers. Locknut should be fully engaged on axle. Please do not assemble training wheels without the provided washer.

If bracket assembly does not fit or is blocked by the chain guard, coaster brake or other object, do not use this training wheel.

Make sure that all fasteners are secure before using bicycle.

Always wear protective gear: helmet, knee pads and elbow pads.

If you are uncertain as to the attachment of the training wheels to your child's bike, consult an independent bicycle retailer.



⚠ WARNING:
CHOKING HAZARD
Small parts. Not for
children under 3 years.
**ADULT ASSEMBLY
REQUIRED**

216mm