

# anko

Humidifier

Model: H1103B

**User Manual**



PLEASE READ AND SAVE THESE  
INSTRUCTIONS FOR FUTURE REFERENCE

appliance.

# IMPORTANT SAFETY INSTRUCTIONS:

**BASIC SAFETY PRECAUTIONS SHOULD ALWAYS BE FOLLOWED WHEN USING ELECTRICAL PRODUCTS.**

## **READ AND SAVE THESE INSTRUCTIONS**

- Always place humidifier on a firm, flat surface. A waterproof mat or pad is recommended for use under the humidifier. Never place it on a rug or carpet, or on a finished floor that may be damaged by exposure to water or moisture.
- Always unplug the unit from the electrical outlet immediately after using and before cleaning.
- DO NOT place or store the unit where it can fall or be pulled into a tub or sink.
- DO NOT place or drop into water or other liquids.
- DO NOT use water above 30°C.
- Use this unit only for its intended use as described in this manual. Do not use attachments not recommended by Kmart; specifically any attachments not provided with this unit.
- NEVER drop or insert any object into any opening.
- Always hold the water tank firmly with both hands when carrying a full tank of water.
- DO NOT place the humidifier near heat sources, such as a stove, and do not expose the humidifier to direct sunlight.
- DO NOT carry this unit by the power cord or use the power cord as a handle.
- This unit is designed for personal, non-professional use only.
- DO NOT use outdoors. For indoor use only.
- This appliance is not intended for use by persons (including children) with reduced physical, sensory or mental capabilities, or lack of experience and knowledge, unless they have been given supervision or instruction concerning use of the appliance by a person responsible for their safety.
- Children should be supervised to ensure that they do not play with the

- Never cover the unit while it is operating.
- Always keep the cord away from high temperature and fire.
- If the supply cord is damaged, it must be replaced by the manufacturer, its service agent or similarly qualified persons in order to avoid a hazard.
- Do not attempt to adjust or repair the unit. Servicing must be performed by professional or qualified personnel.
- Stop using this unit if there is an unusual noise or smell.
- Unplug this unit when not in use for a long period of time.
- Do not touch the water or any parts of the unit that are covered by water while the unit is on or plugged in.
- Unplug the appliance during filling and cleaning.

### **About White Dust:**

Use of high mineral content hard water may cause a white mineral residue to accumulate on surfaces in the room near the humidifier. The mineral residue is commonly called "white dust." The higher the mineral content (or, the harder your water is), the greater the potential for white dust. The white dust is not caused by a defect in the humidifier. It is caused only by minerals suspended in the water.

## Unique Features and Specifications

### Ultrasonic Technology

This humidifier uses ultrasonic high frequency technology to convert the water into 1–5 million super particles that are dispersed into the air evenly.

### Warm & Cool Mist Function

Choose either warm or cool mist for customized comfort.

In winter, a more draught weather was expected. Warm mist function can release mist around 35°C which helps to make the air relatively warmer, a greater comfort to user, especially those suffered from irritated sinuses. Besides, by using the warm mist mode, mist output can be 20-30% more than cool mist.

### Night Light

A useful night light feature is included for your convenience.

### Built-in Timer

Programmable timer, up to 12 hours

### Auto Shut-Off Protection

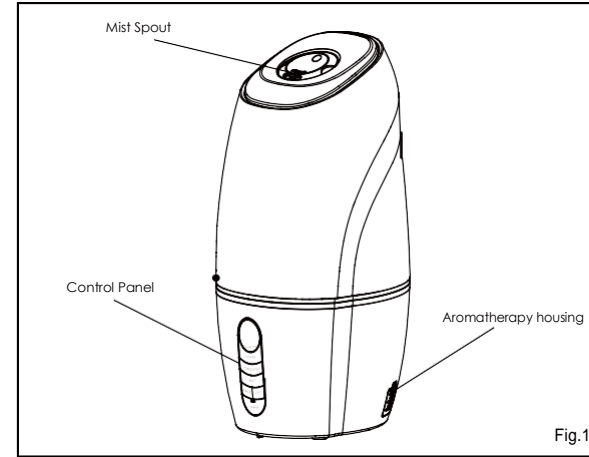
When the tank is empty the unit will shut off automatically.

Voltage	Watts	Capacity
230-240V	55-62W	5.6 liters

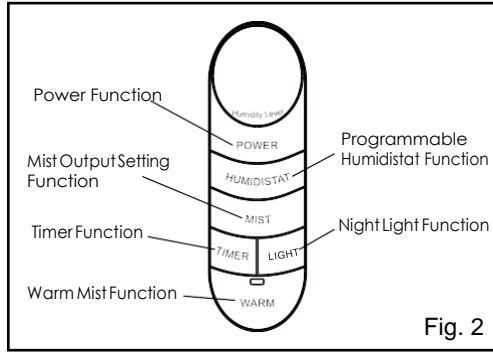
### Run Time: Up to 65 hours

Run time is calculated based on using cool water and setting the mist level to the low setting. Based on the natural humidity level in your home, the temperature of water you use, and the mist level setting you choose, you may experience longer or shorter run times.

## Warm & Cool Mist Ultrasonic Humidifier



## How To Use



### Power Function

Plug unit in to a 220-240V AC electrical outlet. Press the POWER button to turn unit on. Press the POWER button again to turn unit off.

**ATTENTION:** when you press ON the humidifier, but the water tank is empty, the 3 icon display will flash 10 times to indicate water is empty.

### Programmable Humidistat Function

This unit has a Programmable Humidistat that can be set in 5% increments from 30%-75% humidity. Keep pressing the **HUMIDISTAT** button until the desired humidity level setting is reached. The LCD display will show the set humidity level for 3 seconds, then will default back to display the current humidity. (if display showing "--" means humidity is one level above 75% or one level below 30%).

When the humidifier is first powered ON (connected to mains and switched ON), it will take 10s to detect the ambient humidity, and if the ambient humidity is higher than user setting, it will stop working. When the humidifier is in operation and the ambient humidity is lower than 2% of the user setting, the humidifier will continue to function On and OFF to maintain the set humidity setting.

### Mist Output Setting Function

Press the MIST button to activate the mist output setting. The mist output setting will cycle through the following settings 1 (Low)-2(Ideal)-3(High).

### NOTE:

- To disconnect, touch power button controls to the "off" position, then remove the plug from the outlet.
- Never operate without water in the tank.
- Only use water in the tank.
- Never use any additive to the water.
- Do not wash, adjust, or move this unit without first unplugging it from the electrical outlet.

### Timer Function

Press the TIMER button to activate the timer. The timer will cycle through the following settings 0 (OFF)-1 hours-2 hours-3 hours-4 hours-5 hours-6 hours-7 hours-8 hours-9 hours- 10 hours-11 hours- 12 hours-OFF.

### Night Light Function

Press the LIGHT button once to turn on the night light. The light at the bottom of the water tank will turn on, illuminating the tank. Press the LIGHT button a second time to leave the night light on, but the brightness of lights will decrease. Press the LIGHT button a third time to turn off night light (Note: LCD and LEDs under control panel will off at the same time). Press the LIGHT button a fourth time, LCD and LEDs under control panel will switch ON and night light will be OFF.

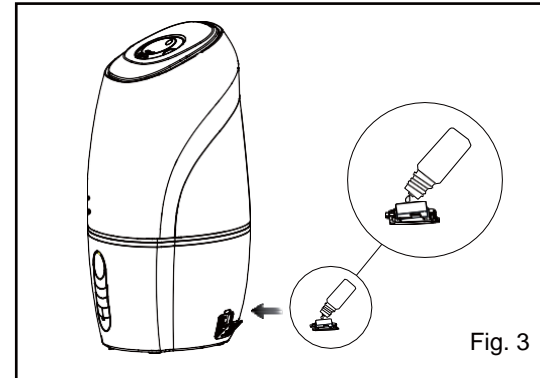
### Warm Mist Function

Press the WARM button once to turn on the warm mist, the red indicator at the top of **WARM** button will turn on. Press the **WARM** button a second time to turn off the warm mist, the red indicator will turn off.

### Aromatherapy function

You can add essential oil of your choice, take out tray from unit (Fig 3.), add 1~2 drops essential oil on to the pad, then put back the tray onto unit. There is one pad in the tray and two pads in the accessory bag.

**ATTENTION:** Do not add too much essential oil on to the pad (no more than 2 drops). Too much essential oil can leak into the unit when the tray is installed, this can damage the unit.



## How to Fill

**CAUTION:** Before filling unit with water, turn the power off and unplug unit from mains power outlet.

**NOTE:** Always use two hands to carry the water tank.

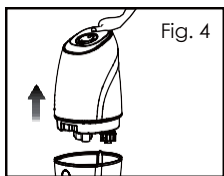


Fig. 4

1. Grasp tank handle and lift up from humidifier base. (Fig. 4)

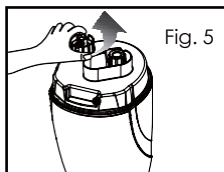


Fig. 5

2. Turn the tank upside down—remove the tank cap by turning it counter-clockwise. (Fig. 5)

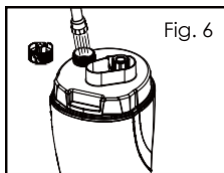


Fig. 6

3. Fill the water tank with clean, cool water. We recommend using distilled water if you live in a hard water area. (Fig. 6)

**IMPORTANT! DO NOT** add essential oils to water tank. Even a few drops can ruin the humidifier.

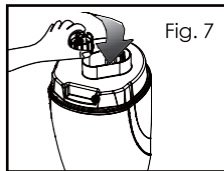


Fig. 7

4. Replace the tank cap by turning clockwise until tight. (Fig. 7)

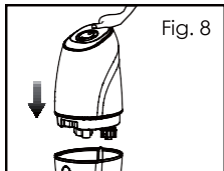


Fig. 8

5. Install tank back on the base of the unit. Make sure the tank is firmly seated. (Fig. 8)

**NOTE:** It is normal to have a small amount of water in the base of the humidifier during and after use.

## Cleaning and Care

**CAUTION:** Before cleaning the unit, turn power off and unplug unit from the outlet.

- Perform regular maintenance on the ultrasonic membrane.
- Never use detergent to clean the ultrasonic membrane.
- Never clean the ultrasonic membrane by scraping with a hard object.

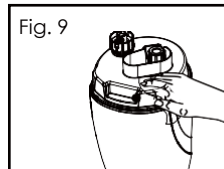


Fig. 9

### To Clean the Tank

Remove the tank from the humidifier base by lifting it from the main unit. Unscrew the tank cap and rinse inside the tank with clean water.

To remove any scale or build-up, use a 50/50 mixture of vinegar and lukewarm water to clean the inside of the tank. (Fig. 9)

**Suggestion:** Clean the water tank once every two to three weeks, depending on your water conditions.

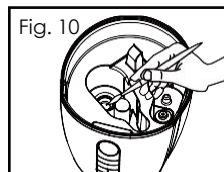


Fig. 10

### To Clean the Ultrasonic Membrane

Pour a 50/50 mixture of vinegar and water on the surface of the ultrasonic membrane, then soak for five minutes. Brush clean with a soft-bristle brush (not included) and rinse.

**NEVER** touch the ultrasonic membrane with your fingers as the natural oils in skin can damage the membrane. (Fig. 10)

**Suggestion:** Clean the membrane once every two to three weeks, depending on your water conditions.

**NOTE:** Never submerge the base in water or any liquid.



Fig. 11

### To Clean the Surface

Clean the surface of your humidifier with a clean, damp, soft cloth as often as needed. (Fig. 11)

## Troubleshooting

PROBLEM	POSSIBLE CAUSE	SOLUTION
Power Light is off/ No mist from spout	<ul style="list-style-type: none"> <li>• Unit is not plugged in</li> <li>• No power at the mains power outlet</li> <li>• Low water level</li> <li>• Timer function</li> </ul>	<ul style="list-style-type: none"> <li>• Plug unit in</li> <li>• Press the POWER button touch to turn the power on</li> <li>• Check circuits and fuses or try a different outlet</li> <li>• Refill tank with water</li> <li>• Timer function may have been set and caused the unit to turn off.</li> </ul>
Peculiar Odor	<ul style="list-style-type: none"> <li>• If new unit</li> <li>• If unit is in use, the odour may due to old water in the tank.</li> </ul>	<ul style="list-style-type: none"> <li>• Open the water tank cap and keep it in a shady and cool place for 12 hours</li> <li>• Empty the old water, clean the tank and fill with clean water</li> </ul>
Excessive Noise	<ul style="list-style-type: none"> <li>• Unit is not level</li> <li>• Low water level</li> </ul>	<ul style="list-style-type: none"> <li>• Place unit on a flat, even surface</li> <li>• Check the water level. Refill the tank if the water is low</li> <li>• Remove vent cover and brush or vacuum clean the vent filter</li> </ul>
White Dust Accumulation	<ul style="list-style-type: none"> <li>• Tank needs refilling</li> </ul>	<ul style="list-style-type: none"> <li>• Use distilled water</li> <li>• Clean the water tank clean the water tank by brush</li> </ul>

## 12 Month Warranty

Thank you for your purchase from Kmart.

Kmart Australia Ltd warrants your new product to be free from defects in materials and workmanship for the period stated above, from the date of purchase, provided that the product is used in accordance with accompanying recommendations or instructions where provided. This warranty is in addition to your rights under the Australian Consumer Law.

Kmart will provide you with your choice of a refund, repair or exchange (where possible) for this product if it becomes defective within the warranty period. Kmart will bear the reasonable expense of claiming the warranty. This warranty will no longer apply where the defect is a result of alteration, accident, misuse, abuse or neglect.

Please retain your receipt as proof of purchase and contact our Customer Service Centre on 1800 124 125 (Australia) or 0800 945 995 (New Zealand) or alternatively, via Customer Help at [Kmart.com.au](http://Kmart.com.au) for any difficulties with your product. Warranty claims and claims for expense incurred in returning this product can be addressed to our Customer Service Centre at 690 Springvale Rd, Mulgrave Vic 3170.

Our goods come with guarantees that cannot be excluded under the Australian Consumer Law. You are entitled to a replacement or refund for a major failure and compensation for any other reasonably foreseeable loss or damage. You are also entitled to have the goods repaired or replaced if the goods fail to be of acceptable quality and the failure does not amount to a major failure.

For New Zealand customers, this warranty is in addition to statutory rights observed under New Zealand legislation.