

INSTRUCTION MANUAL

18+ months

1. Component List

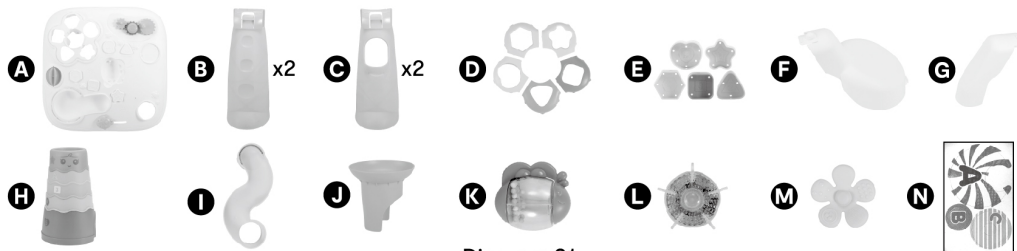


Diagram 01

2. Assembly Instructions

a. Assemble the legs as shown in Diagram 02. Make sure the legs are inserted to the main body as shown in Diagram 03.

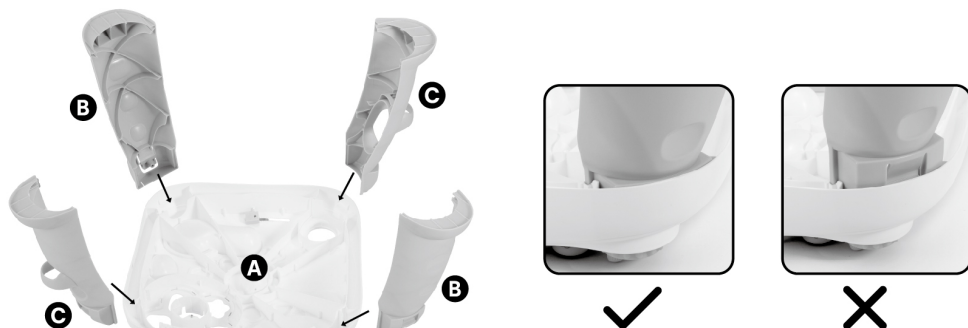


Diagram 02

Diagram 03

b. Assemble the slideway F & G as show in Diagram 04. Make sure both sides of the slideway are inserted to the main body like Diagram 05.

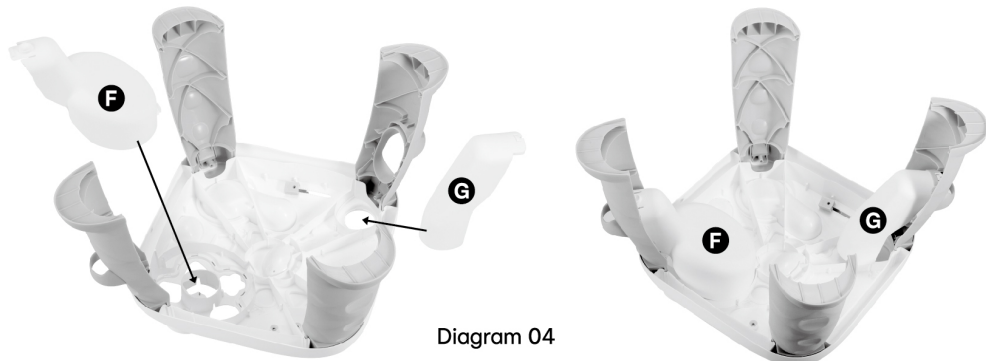


Diagram 04

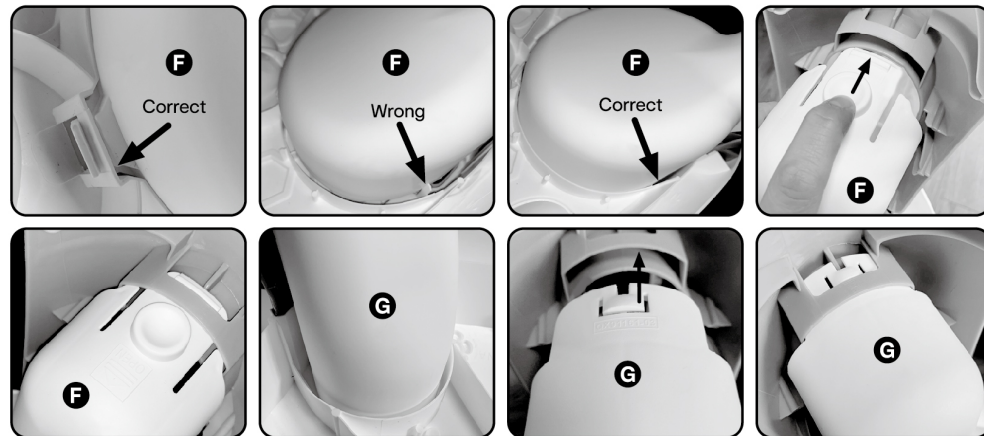


Diagram 05

c. Assemble other Component as show in Diagram 06. Make sure component N stick in the right position as shown on Diagram 07.

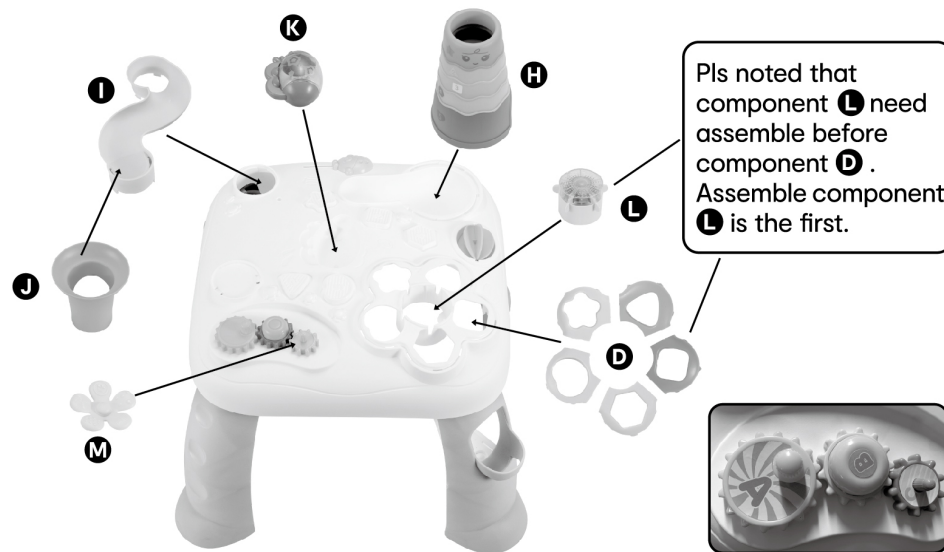
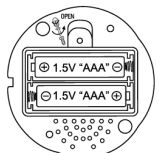


Diagram 06

Diagram 07

3. Cautions

REQUIRES 2 X 1.5V AAA BATTERIES (NOT INCLUDED).



CAUTION: BATTERY INSTALLATION BY ADULT REQUIRED.

CAUTION: DO NOT SIT OR STAND ON THE TABLE.

WARNING: BATTERIES ARE TO BE INSERTED WITH THE CORRECT POLARITY (+ AND -). DO NOT MIX DIFFERENT TYPES OF BATTERIES OR NEW AND USED BATTERIES. NON-RECHARGEABLE BATTERIES ARE NOT TO BE RECHARGED. RECHARGEABLE BATTERIES ARE ONLY TO BE CHARGED BY ADULT. THE SUPPLY TERMINALS ARE NOT TO BE SHORT-CIRCUITED. REMOVE BATTERIES FROM THE TOY WHEN NOT IN USE FOR EXTENDED TIME OR WHEN BATTERIES BECOME EXHAUSTED. BATTERY INSTALLATION BY AN ADULT IS REQUIRED. DISPOSE OF BATTERIES RESPONSIBLY. DO NOT DISPOSE OF IN FIRE.

Keycode : 42882114

Instruction manual has to be kept since it contains important information.

WARNING: THIS TOY PRODUCES FLASHES THAT MAY TRIGGER EPILEPSY IN SENSITISED INDIVIDUALS.

WARNING: ITEM TO BE ASSEMBLED BY ADULT ONLY. CHOKING HAZARD. CONTAINS SMALL ASSEMBLY COMPONENTS WITH FUNCTIONAL SHARP POINT AND EDGES.