

ASSEMBLY INSTRUCTIONS

Enclosed Hardware

2 x LN Screws



1x LN Key



Included Parts:

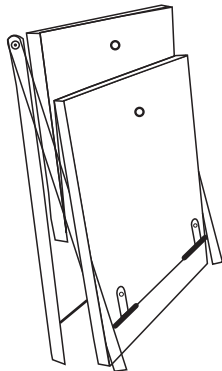
1 x Powder coated Stand

1 x Small Wooden Tier

1 x Large Wooden Tier

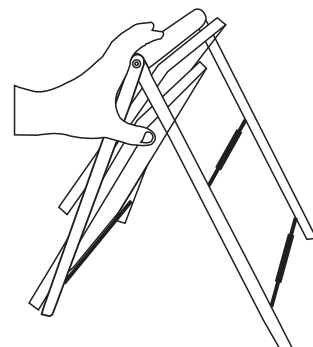
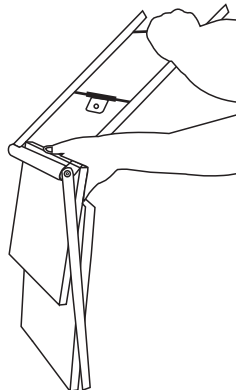
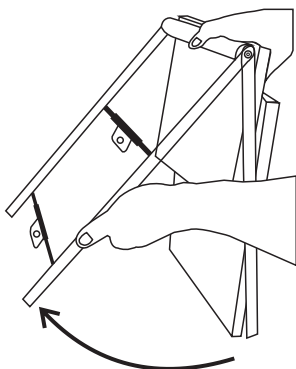
Step 1

Remove the two locked pieces from the box (see image below).



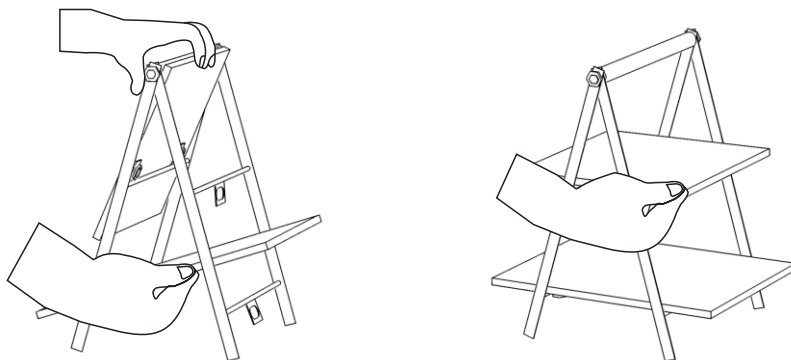
Step 2

Hold the locked side of the stand with the tiers and roll the other side of the stand with the clip arms clockwise to form an A shape (see image below)



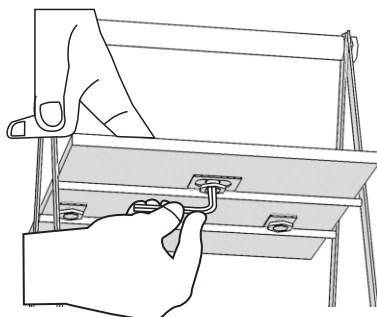
Step 3

Push out the stand so it forms an A shape. Press down both the small and large tiers so they are flat and being supported on the clip arms. (see image below).



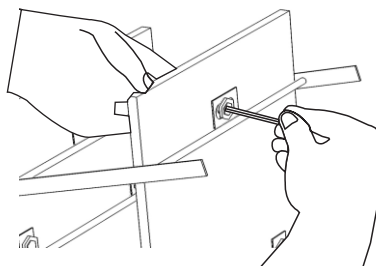
Step 4

Attach the small wooden tier to the metal latch using the LN bolt and tighten into the clip arm. (see image below).



Step 5

Attach the large wooden tier to the metal latch using the LN bolt and tighten into the clip arm. (see image below).



Your product is now fully assembled

