

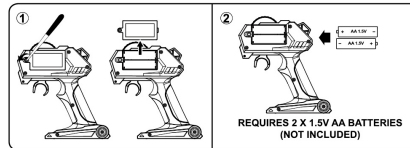
THUNDER

5+
YEARS



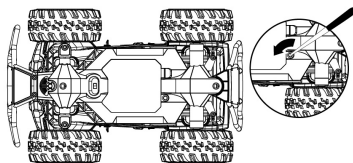
INSTALLING BATTERIES IN THE TRANSMITTER:

- 1 - Open the battery compartment.
- 2 - Insert 2 x 1.5V AA batteries with correct + and - polarities.
- 3 - Close the cover.



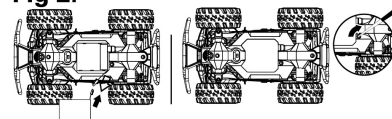
INSTALLING THE VEHICLE BATTERY:

Fig 1:



1. Loosen the screw to open the battery cover.

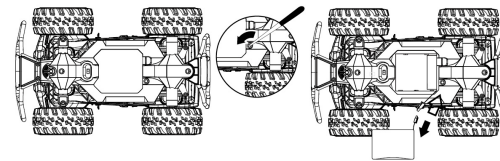
Fig 2:



2. As shown in figure, remove the battery cover and connect the rechargeable battery pack with connector and close the battery cover.

HOW TO CHARGE:

Fig 3:



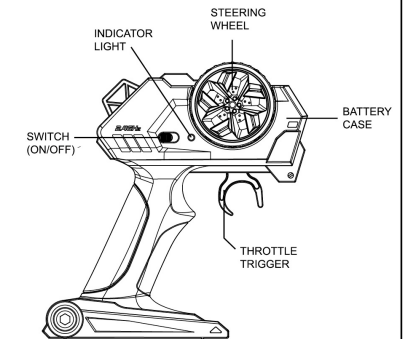
- A. Loosen the screw to open battery cover.
- B. Separate the rechargeable battery pack from connector.
- C. Connect the USB charging cable with rechargeable battery first. (The battery connector will only fit in one way, do not force the connectors together), then plug the USB charging cable into a USB port. The LED light on the USB charging cable will light up when charging.
- D. The LED light extinguishes after it has finished charging. Disconnect the USB charging cable from the USB port and then disconnect the rechargeable battery with USB charging cable.

Attention: Do not charge battery immediately after each play. Let the battery cool down for a while.

Charging should take about 150 minutes depending on how much charge is left in the battery. This supports 10-15 minutes of playing per charge.

LI-PO 500mAh 7.4V rechargeable battery pack +USB charging cable (Included).

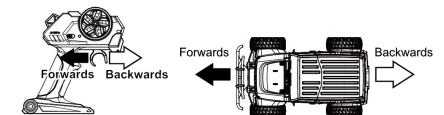
Fig 4:



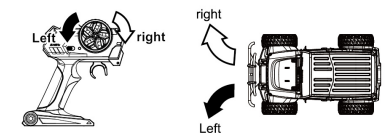
HOW TO USE:

1. Turn on the vehicle first and then turn on the transmitter.
2. Pull the trigger of the transmitter to match the vehicle.
3. When the vehicle is functioning, that means they are matched.
4. If you have more than two vehicles, please pair one by one. When the second vehicle is pairing, please always keep the first vehicle and transmitter on.
5. Please turn off both the vehicle and transmitter and re-start all pairing processes if you are changing to play with another 2.4GHz transmitter.

6. How to move forwards or backwards:
Pull the throttle trigger, the car will move forwards.
Push the throttle trigger, the car will move backwards.



7. Turn left or right:
Turn steering wheel clockwise, the car will turn right.
Turn steering wheel anticlockwise, the car will turn left.



WARNING:

Batteries are to be inserted with the correct polarity (+ and -). Do not mix different types of batteries or new and used batteries. Non-rechargeable batteries are not to be recharged. Rechargeable batteries are only to be charged under adult supervision. Rechargeable batteries are to be removed from the toy before being charged. The supply terminals are not to be short-circuited. Remove batteries from the toy when not in use for extended time or when batteries become exhausted. Battery installation by an adult is required. Dispose of batteries responsibly. Do not dispose of in fire.

Keycode: 42887157

- × PRODUCT MAY VARY FROM THE IMAGE SHOWN.
- × PLEASE KEEP THE PACKAGING FOR FUTURE REFERENCE.
- × PERFORMANCE TIPS: DO NOT DRIVE THE VEHICLE THROUGH WATER.
- × DO NOT DRIVE THE VEHICLE INTO ANY HARD OBJECT.
- × READ THE INSTRUCTIONS BEFORE OPERATING THIS PRODUCT.

WARNING: THIS TOY PRODUCES FLASHES THAT MAY TRIGGER EPILEPSY IN SENSITISED INDIVIDUALS.

CAUTION: CHARGE THE RECHARGEABLE BATTERY BY SUPPLIED USB CHARGING CABLE ONLY. TO BE CHARGED BY AN ADULT.

2.4GHz



MADE IN CHINA

FOR AU / NZ: IMPORTED FOR KMART STORES IN AUSTRALIA AND NEW ZEALAND.

FOR USA: IMPORTED BY ANKO RETAIL INC. 19500 ALDERWOOD MALL, PARKWAY LYNNWOOD WA 98036 USA.