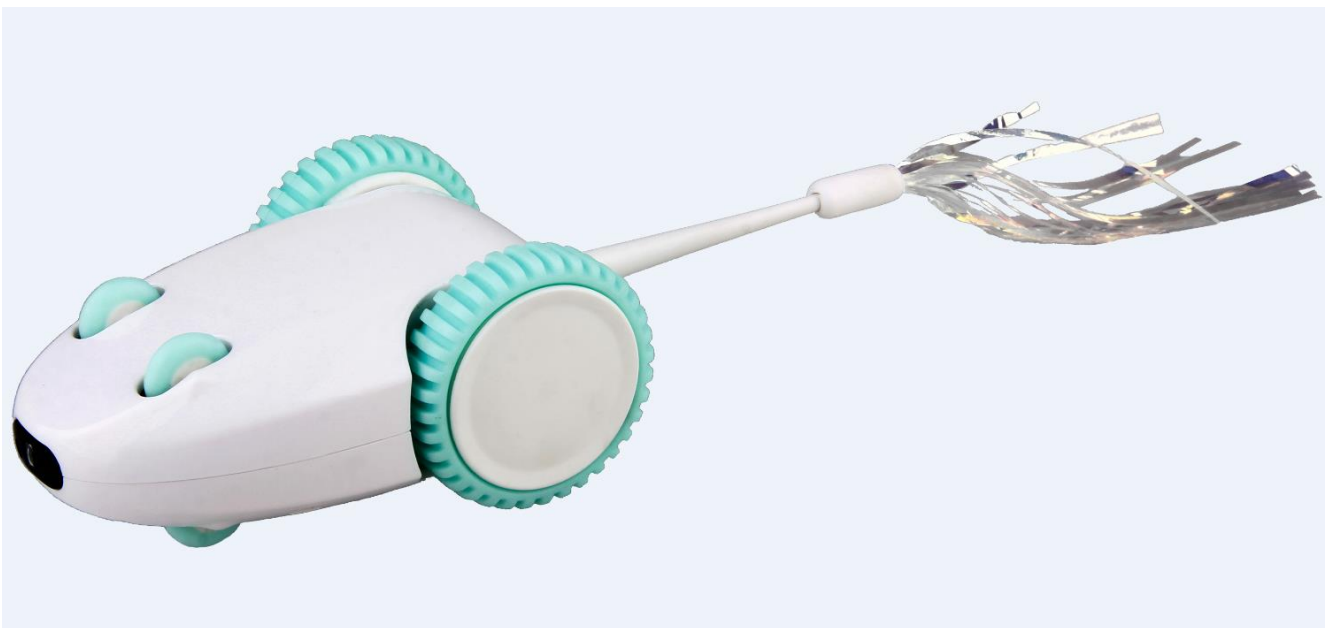
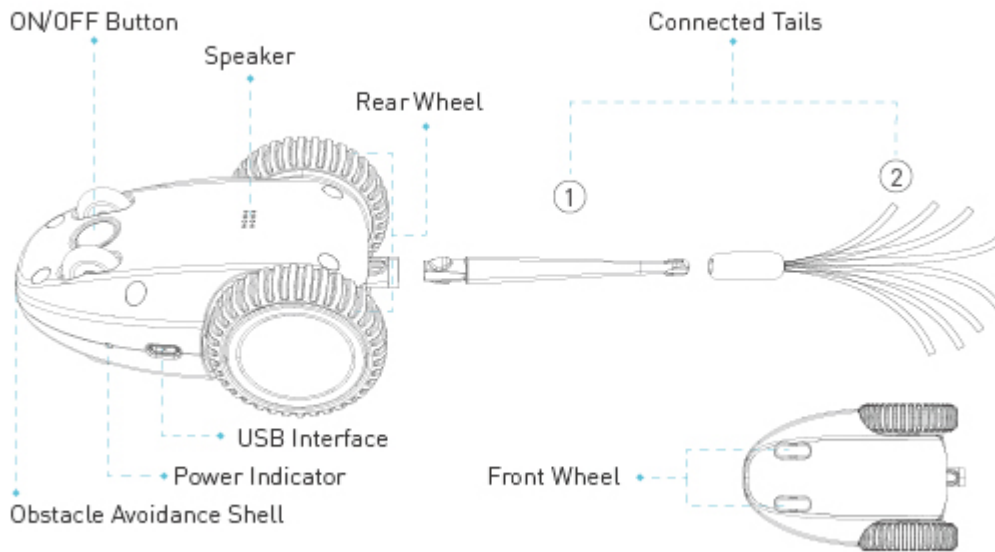


anko

Cat Toy Furious Mouse



Product Overview



Contents



Note: Connect the USB cable (included) to the adapter (not included) to charge the battery.

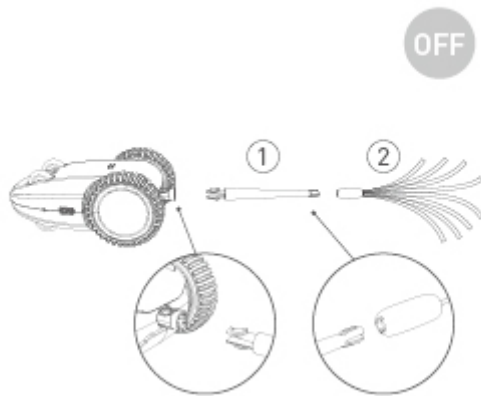
Tech Specs

Battery

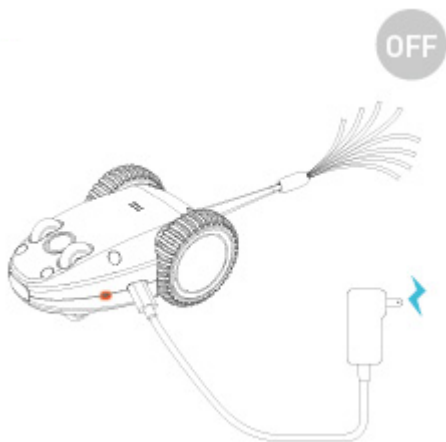
Battery Type	Polymer Lithium-ion Battery
Capacity (mAh)	800
Charging Time (Hours)	2-2.5
Working Time Per Charge (Hours)	1.5-2

Directions for Use

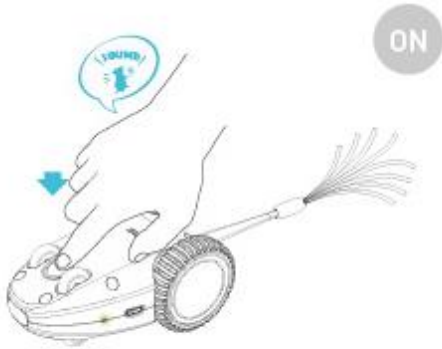
1. Connect the two tail pieces by aligning the ridge of Part 1 into the notch of part 2. Insert the connected tails into the mouse.



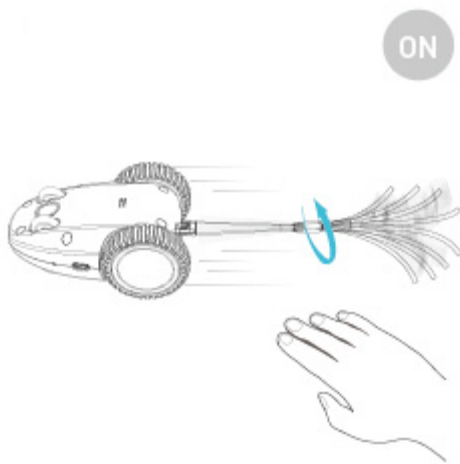
2. Insert the charging cable into a power charger adapter and into the mouse. Charge the device until the power indicator (red light) turns off. Ensure that the device is switched off before charging.



3. To switch on, press the ON/OFF Button and it will squeak; the power indicator will light green for five seconds.



4. Pat the device and put it on the floor, and it will move in auto mode. Pat it to reactive the mouse in the standby mode.



Note:

1. Turn off the device before charging.
2. The green light is on in auto mode and always off in standby mode.

How does the Furious Mouse work?

1. Pat the mouse to trigger 90-second of running movements then it will automatically enter into standby mode.
2. In the first half hour of standby mode, the mouse will squeak and shake every five minutes to catch cat's attention.
3. The red light will flash to remind you of recharging when the power is running low.

Care instruction

Use the product in a clean and safe environment and keep it away from water, fire, high temperatures and dirty places.

Use a clean damp cloth to clean the product if it is stained.

Keep it away from your pets during charging.

WARNING:

Pet toy - Not intended for children.

It is the responsibility of the pet owner if this toy is suitable for their pet's style of play.

No pet toy is indestructible and can be damaged during play.

For your pets safety, inspect regularly and remove if damaged.

Always supervise your pet during play.