

Before You Begin

Caution

- To ensure safe and proper use, read all safety information before using the devices. Only use with manufacturer-approved batteries, chargers, accessories, and supplies.
- **THIS DEVICE IS NOT A TOY.** do NOT allow children or pets to use or play with these devices.
 - **Do not disassemble, modify, or repair the devices.**
 - Do not submerge in water.
 - Do not expose the units to extreme temperatures (heat or cold), open flames, humid, or wet conditions.
 - Do not allow the USB ports, power jack or other inputs of the devices to be exposed to dust, or water, or come into contact with any conductive materials such as liquids, metallic powders, etc.

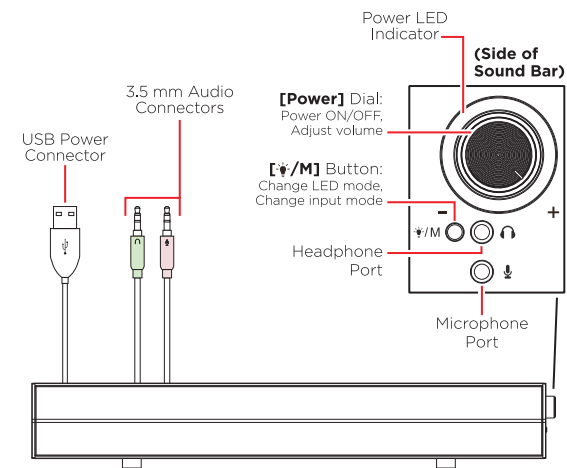
In the Box

- Sound Bar (x1)
- User Manual (x1)
- 3.5mm cable for both speaker and mic (x1)

Specification

- Bluetooth Version: V5.0
- Speaker output: 2 X 5W
- Power Input: Built-in USB cable

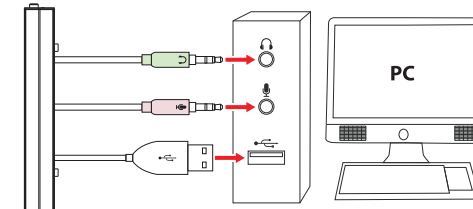
Location of Controls



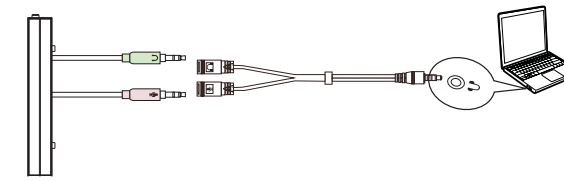
Getting Started

PC and Notebook Setup

Choose a location for the sound bar near your PC or notebook. Plug the sound bar's built-in USB power connector into a USB port on your computer or into a **5V/1A USB adapter (not included)** and plug into an electrical outlet.



Plug sound bar's attached microphone connector (🎤) into the microphone port (🎤) on your PC. Plug the sound bar's headphone connector (🎧) into the headphone port (🎧) on your computer or device.



Plug sound bar's attached microphone and headphone connector into the 3.5mm cable microphone and headphone port, plug the other end of into the headphone port on your notebook.

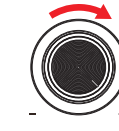
Note: You can use a headset through the sound bar by plugging into the ports on the side of the sound bar.

Playing Audio

To play audio through the sound bar, you must have it set up with a PC, or connected to an AUX or Bluetooth device. See the **PC Setup, Bluetooth Pairing** and **Connecting to an Aux Port** sections of this manual for detailed instructions.

Powering ON/OFF

- Turn the **[Power]** dial on the side of the sound bar to the **right** until it clicks to power the sound bar ON.
- When powered on, a voice will be heard, the sound bar's LED lights will turn on, and the LED indicator around the **[Power]** dial will light up. The sound bar will automatically re-pair to any available previously-paired device in range.
- Turn the **[Power]** dial to the **left** until it clicks to power the sound bar OFF.



Changing Input Mode

Press and hold the **[*/M]** button on the side of the sound bar to switch between Bluetooth and AUX modes. A voice will be heard indicating the mode.

Adjusting Playback & Volume

- In both Bluetooth and AUX modes, all audio playback will be controlled by your connected device.
- In both Bluetooth and AUX modes, volume can be adjusted with the **[Power]** dial on the side of the sound bar, or with the controls on your connected device.

Bluetooth Pairing

1. Power the sound bar ON. A voice will be heard and the sound bar will enter Bluetooth pairing mode.
2. Set your smart device to search for Bluetooth devices. Select **KM42896111** from the list of found devices.
3. Once successfully paired, a voice will be heard and you will be able to play audio through the sound bar.

Connecting to an Aux Port

Plug the sound bar's attached headphone connector into the headphone jack or audio output port on your device.

Switch to AUX mode. You will be able to play audio through the sound bar

Changing LED Mode

Press the **[*/M]** button to choosing different colourful LED lighting mode.

12 Month Warranty

Thank you for your purchase from Kmart.

Kmart Australia Ltd warrants your new product to be free from defects in materials and workmanship for the period stated above, from the date of purchase, provided that the product is used in accordance with accompanying recommendations or instructions where provided. This warranty is in addition to your rights under the Australian Consumer Law.

Kmart will provide you with your choice of a refund, repair or exchange (where possible) for this product if it becomes defective within the warranty period. Kmart will bear the reasonable expense of claiming the warranty. This warranty will no longer apply where the defect is a result of alteration, accident, misuse, abuse or neglect.

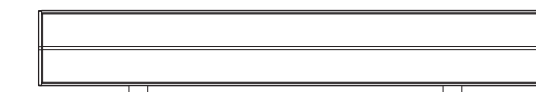
Please retain your receipt as proof of purchase and contact our Customer Service Centre on 1800 124 125 (Australia) or 0800 945 995 (New Zealand) or alternatively, via Customer Help at Kmart.com.au for any difficulties with your product. Warranty claims and claims for expense incurred in returning this product can be addressed to our Customer Service Centre at 690 Springvale Rd, Mulgrave Vic 3170.

Our goods come with guarantees that cannot be excluded under the Australian Consumer Law. You are entitled to a replacement or refund for a major failure and compensation for any other reasonably foreseeable loss or damage. You are also entitled to have the goods repaired or replaced if the goods fail to be of acceptable quality and the failure does not amount to a major failure.

For New Zealand customers, this warranty is in addition to statutory rights observed under New Zealand legislation.

anko

USER'S MANUAL



Gaming Sound Bar Light
Keycode:42896111

PLEASE READ CAREFULLY BEFORE OPERATING THIS EQUIPMENT
KEEP IT IN A SAFE PLACE FOR FUTURE REFERENCE