

100.0 mm

anko

Gaming Mouse

Instruction Manual

KC42902065



*Please read all the information carefully before you use the product and keep the manual for future reference.

100.0 mm

Safety Instructions:

Please read the instruction manual before using this device and follow all the safety instructions to avoid damage caused by improper use.

- Keep the instruction manual for future reference. Should this device be given to a third party, then this instruction manual must also be handed over.
- Use this device solely for its intended purpose.
- Only use this appliance indoors
- Keep the appliance away from all hot surfaces and naked flames.
- Always put the appliance on a level, stable, clean, dry surface.
- Protect the appliance from extreme heat and cold, dust, direct sunlight, humidity and drops or jets of water.
- Do not immerse the appliance in water or in other liquids.
- Do not open the housing under any circumstances. Do not introduce any objects into the interior of the housing.
- Should the device malfunction due to electrostatic discharge or a short power surge, disconnect it from your computer and then reconnect it again.

100.0 mm

Product overview:



100.0 mm

How to change the side plate:

Step 1: Pull the plate from the position ①.



Step 2: Change side plates and install it into the mouse.



100.0 mm

Adjustable weight tuning:

Open the bottom cap, inside contained 5 weight-tuning sets, could adjust the weight of the mouse casually.



Open the bottom cap

5 weight-tuning sets

100.0 mm

Connecting the Mouse:

1. Plug the USB cable into a free USB port on the computer.
2. The Mouse will connect automatically and can be used immediately.

Feature:

- DPI selection: 1000-1500-2000-4000-8000-16000DPI
- 12 kinds of RGB light effect:
- Colorful Streaming mode / Steady mode / Breathing mode / Colorful Tail mode / Neon mode / Colorful Steady mode / Flicker mode / Tail mode / Wave mode / Reaction mode / Streaming mode / LED OFF
- For more customized functions, please download and install the software. <http://www.inraindustry.com/downloads.html>



100.0 mm

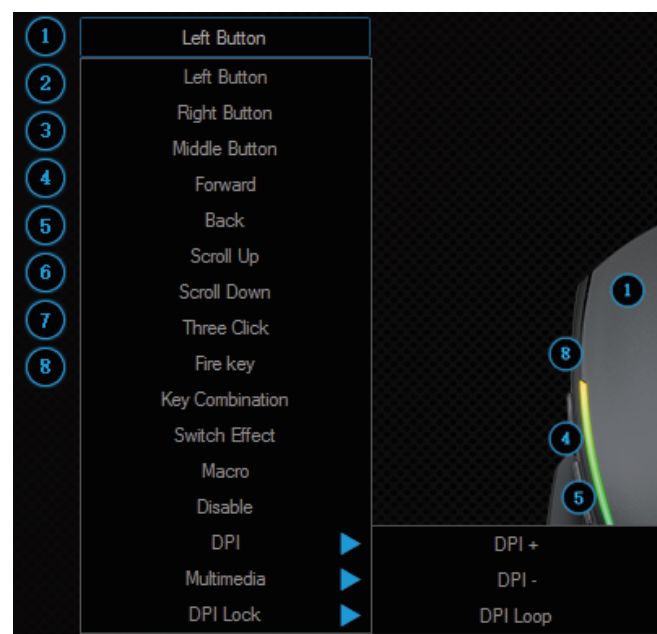
Supports:

Windows 7/8/10

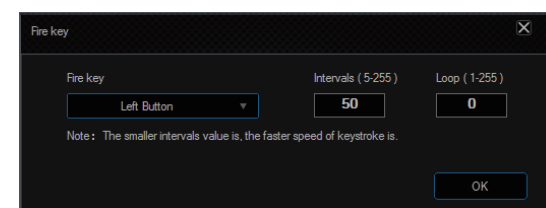
Main interface of driver and functions description:



100.0 mm

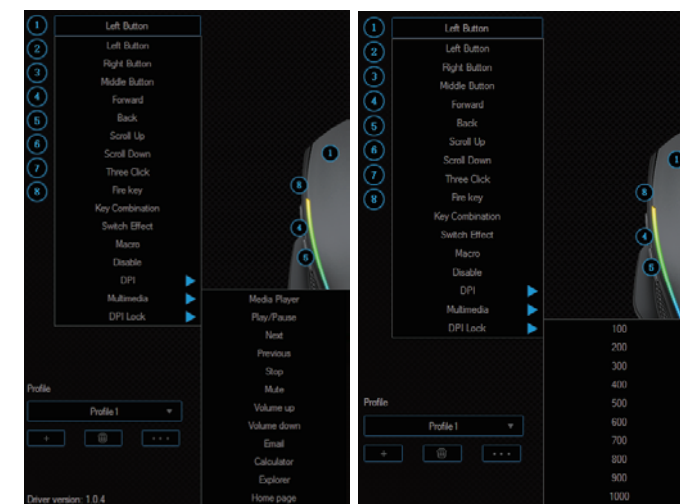


100.0 mm



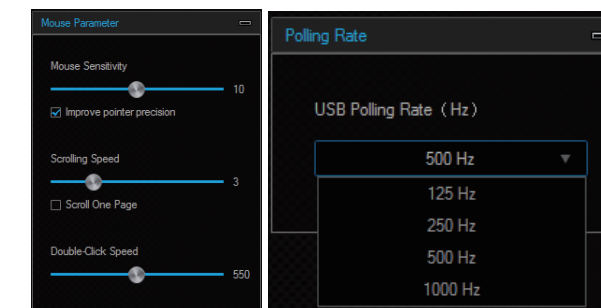
1. Left Button: Left button function
2. Right Button: Right button function
3. Middle Button: Middle button function
4. Forward Button: Enter to next page
5. Back Button: Back to previous page
6. DPI Function: DPI+, DPI- and DPI loop
7. LED Switch Effect: Adjust the RGB light mode
8. Three Click: Equivalent to click the left key for 3 times
9. Fire Function: Speed rate can be adjust in software for the mouse key
10. Key Combination: Customize Shift, Ctrl, Alt, Win and any of the keyboard buttons to combine button functions (support 3 reassembles farthest, such as Ctrl+A+B)
11. Marco Function: See more details in Marco Editor
12. Disable the key: To set button without function

100.0 mm



13. Multimedia Function: Include Media Player, Play/Pause, Next, Previous, Stop, Mute, Volume Up, Volume Down, Email, Calculator, Explorer and Homepage.
14. DPI Lock: From 100-1000 to lock any of the DPI values.

100.0 mm



15. Mouse Parameter
 - a. Mouse Sensitivity: To adjust the movement speed of mouse
 - b. Scrolling Speed: To adjust the scroll wheel speed of mouse
 - c. Double-click Speed: To adjust the double-click speed of mouse
16. Polling Rate: with 125Hz/250Hz/500Hz/1000Hz to choose
17. Restore: Set the mouse to the factory default
18. Apply: write the settings to mouse

100.0 mm

Macro Editor :

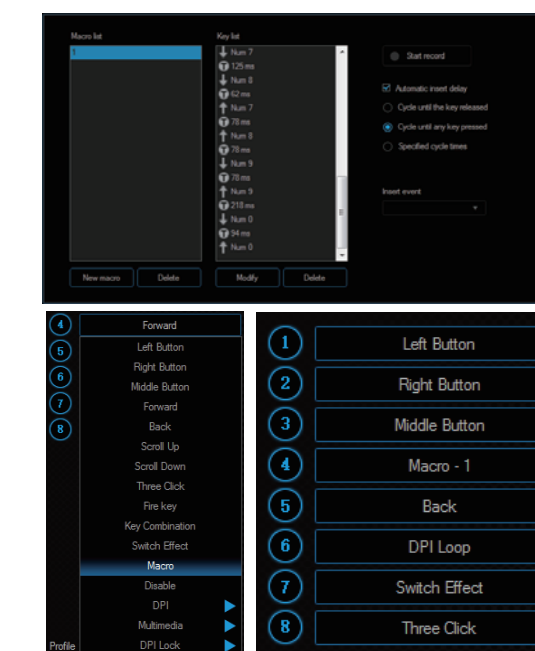
Macro management can record any keys of keyboard, the time of keys reaction and the number of keys cycles.

- a. Click **【New marco】** to create a new file, such as a, b, c...
- b. Select whether to increase the delay and the times of cycles
- c. Click **【Start record】** and start recording any keys of keyboard. The keys you recorded will display in the macro edit box
- d. After the recording, click "stop record"
- e. To modify the recording content, please make the following changes in the macro options:

- f. Choose to insert the event: insert relevant content in the selected location
- f. After recording is completed, just exit the macro recording interface.
- g. Execute a macro, such as the mouse button ④ key set to "macro functions", after recording is complete, press the mouse④key to play the recorded content

- Delete: Delete the selected content
Modify: Modify the delay value and input button again

100.0 mm

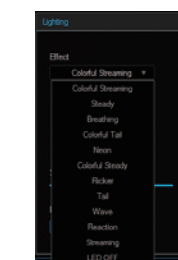


100.0 mm



DPI settings:

1. Six groups DPI: gear 1 / gear 2 / stalls 3 / stalls 4 / stalls 5 / stalls 6, check the selections
2. DPI setting: set the 6 groups of DPI value, adjust within the range of 100 ~ 16000DPI



Lighting settings:

- 12 kinds of light effect : Colorful Streaming mode--- Steady mode---Breathing mode--- Colorful Tail mode---Neon mode--- Colorful Steady mode--- Flicker mode--- Tail mode--- Wave mode--- Reaction mode--- Streaming mode--- LED OFF

Uninstall:

Open the control panel and open the "Add or Remove Programs" window, find "KM42902065 Gaming Mouse" and click "delete" to complete the uninstall program.

100.0 mm